

Brand new Bradco 611 backhoe attachment for larger skid steer, 13' reach, new price \$10,500, will sacrifice. 973-579-3595

2 hyd. power units: 25hp 3ph, 25 gal. reservoir, Permco & oil gear pumps, were \$8500 ea. new. Best offer. 717/335-0379

Case 1150 track loader, good working condition, asking \$10,800; Cat V40C forklift, 151/83 side shift, air tires, \$4900; very old Cletrac track tractor w/ steering wheel, runs, asking \$3000. 570-345-4882

Equipment

**CHALK**

Sales -150 Forklifts In Stock



410-686-6800 BALTIMORE, MD

**USED EQUIPMENT FOR SALE**

315 Gal. Chasse Emulsions Asphalt Kettle; Man Hole Cover; 8-HP Engine; Double Bottle Rack; Lights and Insulation. \$6,000

1982 Athey Belt Loader 25 Ft. Conveyor; John Deere Diesel Engine. \$12,000

1972 Diamond Reo Distributor Truck Tandem 52 G.V.W; Detroit 8.2 Diesel; Spicer 13 Spd. Road Ranger.

Etnyre Distributor 3000 Gal. Propane Heat 2 Burners. Truck and Distributor in Working Condition. \$9,500

Call Ed 717-579-3731



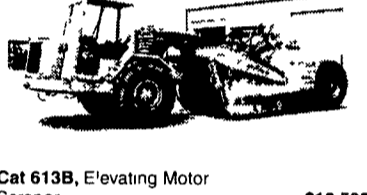
2001 Sterling 9513 Boom Truck, Cat Engine 17 Ton 80 Main Boom w/Foldaway Jib 120 Total Reach 5,000 Miles Like New \$89,500



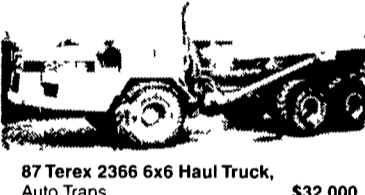
95 Cat 938F, New Rubber GP Bucket Good Condition \$49,500



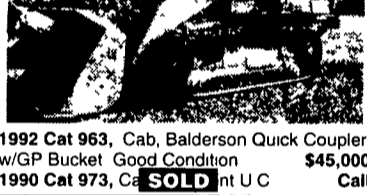
93 Cat 312 Excavator, 5300 Hrs \$29,500  
95 Cat 312, 3400 Hrs AC Excellent \$34,000



Cat 613B, E'levating Motor Scraper \$19,500



87 Terex 2366 6x6 Haul Truck, Auto Trans \$32,000



1992 Cat 963, Cab, Balderson Quick Coupler w/GP Bucket Good Condition \$45,000  
1990 Cat 973, Cab, SOLD int U C Call



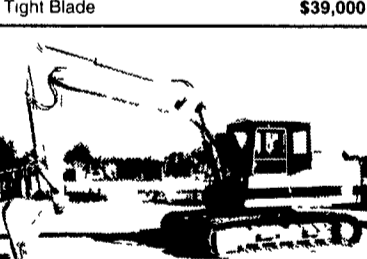
Trojan 232 25 Ton 6x6 Haul Truck \$29,500



Cat D5H, Good Undercarriage Tight Blade \$39,000



88 JD 450G, Good U/C 6 Way Blade \$24,000  
97 JD 450G, EROPS 6-Way Blade 1200 Hrs Like New \$42,500



Cat E120B Excavators, 4 To Choose From \$21,000 to \$24,000  
1991 Hitachi EX120 \$24,000

- (2) Case 1840 Skid Loaders ..... \$9,500 & \$11,000
- JD 555 Crawler Loader w/Backhoe Attachment ..... \$16,500
- Cat 980B Wheel Loader w/Forks ..... \$18,500
- 94 Cat 416B 4x4, Ext. Hoe ..... \$26,500
- Cat EL240 Excavator, 48" Bucket ..... \$26,500
- 94 Bobcat 953 ..... \$12,500

**PAVING EQUIPMENT**

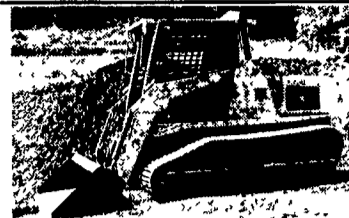
- Mauldin 500 Paver ..... \$6,000
- Hyster 350C Roller ..... \$6,500
- Case 252 Tandem Vibratory Roller ..... \$7,500
- 95 Ingersoll Rand BA30 Tandem Vibratory Roller ..... \$8,500
- Stone Wolfpack 2500 double drum asphalt roller ..... \$3,000

**Weaver's Equipment Sales**

RD#1, Box 418, Milton, Pa. 17847  
Phone: 570-523-9598



96 Cat 953 B, Cab, AC, Ripper, Super Clean \$69,000



2000 Positrac 2810, Turbo, Front Door, 600 Hrs \$19,500

95 NH LX665, 2100 Hrs, Rear Weights, Good Tires \$9,800

96 NH LX885, 2400 Hrs 2-Spd \$10,900



93 Komatsu PC150, 35,000 lb Excavator, 5700 Hrs \$34,000

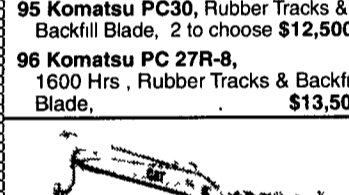
91 Komatsu PC150LC \$29,000  
93 Case 9030, 6000 Hrs \$25,000



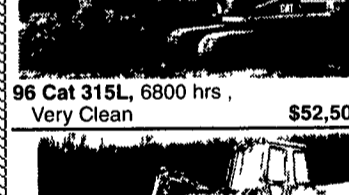
94 Cat 311, 4370 hrs \$29,500  
93 Cat 311, 3400 hrs \$29,500



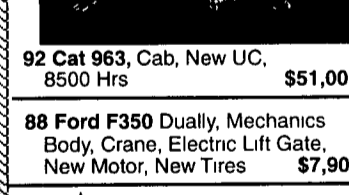
Rent \$125/Day, \$500/Week  
6 To Choose  
91-96 Komatsu PC40, \$11,000 to \$16,500  
95 Komatsu PC30, Rubber Tracks & Backfill Blade, 2 to choose \$12,500  
96 Komatsu PC 27R-8, 1600 Hrs, Rubber Tracks & Backfill Blade, \$13,500



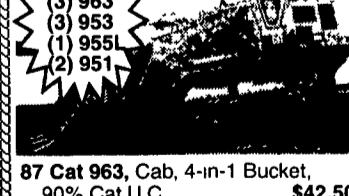
96 Cat 315L, 6800 hrs, Very Clean \$52,500



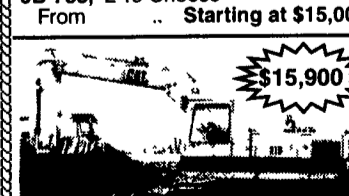
92 Cat 963, Cab, New UC, 8500 Hrs \$51,000



88 Ford F350 Dually, Mechanics Body, Crane, Electric Lift Gate, New Motor, New Tires \$7,900



(1) 973  
(3) 963  
(3) 953  
(1) 955L  
(2) 951  
87 Cat 963, Cab, 4-in-1 Bucket, 90% Cat U C \$42,500  
87 Cat 963, Open ROPS, New Tracks \$35,000  
JD 755, 2 To Choose From .. Starting at \$15,000



Cat 215, 8' Wide, Nice Condition Reduced \$15,900

**NEW ADDITIONS**

1993 Case 580K, Cab, 4x4, E-hoe Call  
JD 644E Rubber Tire Loader, Rebuilt Engine, New Paint Call  
1984 Cat 910 Rubber Tire Loader \$15,500  
1996 Cat 312, 3000 Hrs, New Paint \$34,000  
1993 Case 850E Long Track, 6-Way Blade \$25,500



96 Hitachi EX100-5, 1860 Hrs, Bolt-On Rubber Pads, Plumbed, AC \$39,500

96 Hitachi EX100-5, 2720 Hrs, Bolt-on Rubber Pads, AC \$37,500

94 Hitachi EX100-3, 3740 Hrs, AC \$26,500

91 Hitachi EX100-2, 4060 Hrs \$22,500



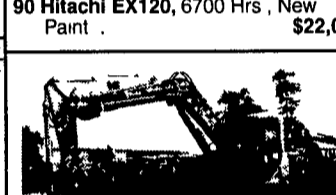
96 Hitachi EX120-5, 2550 Hrs, Bolt-On Rubber Pads, AC \$41,500

95 Hitachi EX120-3, 5700 Hrs, AC \$27,500

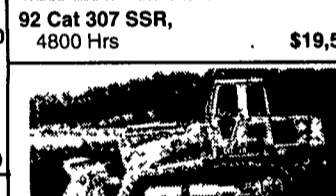
94 Hitachi EX120-3, 5680 Hrs, Plumbed, AC \$28,000

93 Hitachi EX120-2, 3596 Hrs, AC \$25,000

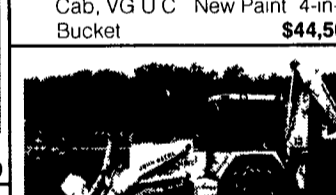
93 Hitachi 120, 3370 Hrs \$24,500  
93 Hitachi 120, 3740 Hrs \$24,000  
90 Hitachi EX120, 6700 Hrs, New Paint \$22,000



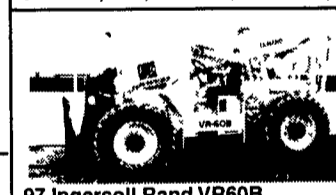
92 Cat 307 SSR, 4800 Hrs \$19,500



89 Cat 973, Cab, VG U C New Paint 4-in-1 Bucket \$44,500



JD 410C, Cab, Std Hoe, 2WD \$14,500



97 Ingersoll Rand VR60B, Telescopic Forklift, 3200 Hrs, 35' Reach 6000 lb Lift, \$29,500

89 Lull 844B, 8000 Lb Lift \$22,500



93 Cat 312, 4700 Hrs New Paint \$31,500



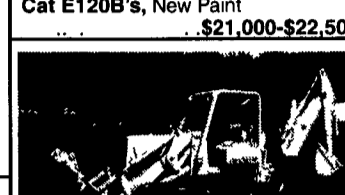
97 Cat 312B, AC, 3000 hrs \$44,000  
96 Cat 312B, 3600 Hrs, AC \$43,000



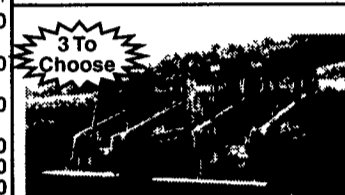
2000 Case 580 Super L, Cab, 4x4, Ext Hoe, 1950 Hrs ... \$37,800



Cat E120B's, New Paint \$21,000-\$22,500



JD 555 Crawler Loader, Good UC, Backhoe Attachment \$16,500  
79 Cat 955L, 13X Series \$19,500  
Cat 951B, Very Good UC, No Rops \$9,500



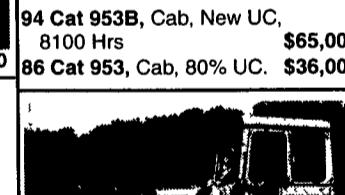
96 Case 1840, 2000 hrs \$9,800  
93 Case 1840, 3000 hrs \$7,900  
99 Case 1838, 70 Hrs, Excellent \$12,500



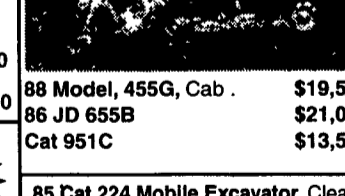
86 JD 544D \$23,500  
88 JD 544E \$28,500  
90 Case 621, Good Tires, New Paint, 4790 Hrs ..... \$27,500



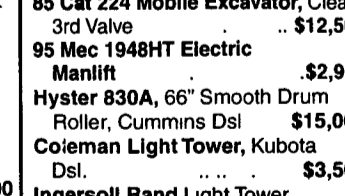
94 Cat 953B, Cab, New UC, 8100 Hrs \$65,000  
86 Cat 953, Cab, 80% UC. \$36,000



88 Model, 455G, Cab \$19,500  
86 JD 655B \$21,000  
Cat 951C \$13,500



85 Cat 224 Mobile Excavator, Clean, 3rd Valve \$12,500  
95 Mec 1948HT Electric Manlift \$2,900  
Hyster 830A, 66" Smooth Drum Roller, Cummins Dsl \$15,000  
Coleman Light Tower, Kubota Dsl. \$3,500  
Ingersoll Rand Light Tower, Deutz Diesel \$3,500  
95 American Eagle A716, 6000 Lb. Straight Mast Forklift.. \$15,500  
GMC Lube Truck, 7 Tanks & Reels w/Air Compressor. \$13,500



Rent Me \$200/Day, \$800/Week

**Rentals Available Day, Week, or Month**  
Financing and Lease Purchase Available No Sunday Calls

**Weaco Equipment**

645 Swamp Church Rd. 717/336-7375

Reinholds, PA 877/529-9328