

# MILK. IT DOES A BODY GOOD.™

MIDDLE ATLANTIC MILK MARKETING ASSOCIATION, INC.

## BUY, SELL, TRADE OR RENT THROUGH THE CLASSIFIED ADS

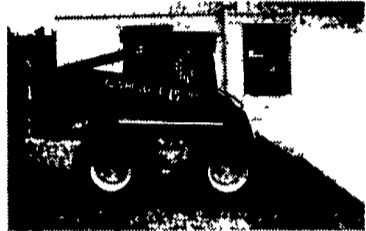
PHONE: 717-626-1164 or 717-394-3047

FAX 717-733-6058

Mon., Tues., Wed., Fri. 8 AM to 5 PM; Thurs. 7 AM to 5 PM

**1A CONSTRUCTION EQUIPMENT**

**100% Financing w/Good Credit at 8% or less Int. in PA**



2001, NH LS190, 98 Hrs, Big Rubber & High Flow.....\$27,000



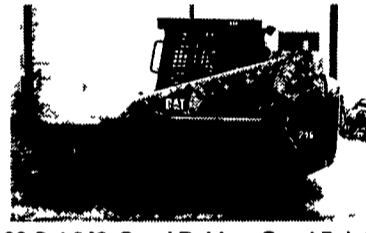
1986 Cat 953, Good bottom, LGP, with Root Rake \$37,000



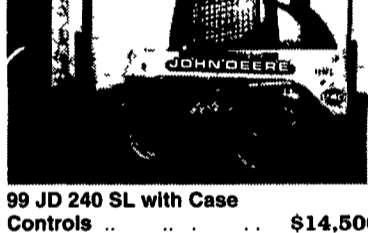
JCB Tractor Loader Backhoe, 217, 4WD, Cab, Ext. Hoe ... \$24,500



JD 544E, 1990, 7200 Hrs..... \$30,000



99 Cat 246, Good Rubber, Good Paint, 1800 Hrs.....\$18,500



99 JD 240 SL with Case Controls .. \$14,500



90 JD 744E Wheel Loader, New Paint, Runs Nice .. \$39,000



Cat D6B Dozer w/Tilt Blade, 5600 Hrs. w/Records. \$29,500



W30 Wheel Loader w/26" Rubber.....\$18,500



99 Cat 226 Skid Loader, 600 Hrs., Cab & Heat.....\$16,500



1999 NH 565, 1200 Hrs..... \$11,500



89 Cat DC3 w/6-Way Blade, Cab, Good Condition..... \$23,000



95 Lull 844B w/37" Reach, New Rubber.....\$33,500

2000 NH LS180, Low Hours..... Call  
98 NH 885, 1200 Hrs, New Rubber..... Call  
99 JD 260, w/Tracks & Backhoe..... Call  
New 48" Pallet Forks.....\$550  
95 JD 455G Crawler Loader, 2200 Hrs., New Paint.....\$29,500

**AA Equipment**  
◆ 717/529-2512 ◆  
No Sunday Calls

1797 Robert Fulton Hwy.  
Quarryville, PA 17566

• We Buy & Sell •  
Financing Available

Skidsteers: Hydra-Mac, Model 2250 & 1300, 10 hrs., like new, \$12,500/ea. 908-561-1514.

2001 Thomas Protough Skidsteer, Model 1300, 60hrs., 43hp Diesel eng., \$14,500. 908-561-1514.

1988 CAT D3C Dozer, new undercarriage, 6way blade, pedal steer, \$22,500. 908-561-1514.

1990 CAT D3CXL Swamp Dozer, 3700hrs., 12' blade w/tilt, pedal steer, \$22,500. 908-561-1514.

1992 CAT D3CXL Dozer, new undercarriage, 6way blade, pedal steer, \$28,500. 908-561-1514.

1999 CAT D3CLGP Dozer, 2600 org hrs., 6way blade, 25" trap shoes, lever steer, asking \$42,500. 908-561-1514.

966 Cat loader \$28,000; A62 Ford loader, \$10,000. Exc. 570/864-2253

Allis-Chalmers HD6B bulldozer w/10' angle blade plus 2 extra blades, 8' straight, & 8' root/rock ripper, \$8,500 for all. Call 610-346-8465.

1997 Takeuchi TBO15 Mini excavator, good rubber tracks, bucket, hyd. hammer, 1988 hrs, \$9500 or rent \$75/day. 717-859-3501

95 Mec 1948HT electric manlift, \$2900. 717-336-7375

85 Cat 224 Mobile excavator, clean, 3rd valve, \$12,500. 717-336-7375

Commerca wood planer, 3 phase w/power converter, dust collector, sharpener, \$600. Also pig farming equip. 619-926-0273

600 gal. Etner tar tanker & distributor, spray bars, & spray wane, 4 cyl Wisconsin motor, nice shape, must sell, \$4500 obo. 717-795-1814 eves 717-576-5991 days

1981 Int. 2554 dump truck, 466 turbo dsl, Allison auto, live hyd. front & rear, \$7500; 1985 CC-10 Series II dynapac roller, 2.5 ton roller w/dual drum drive, dual drum vibrator, \$6500 OBO; 1973 AC HD-16 bulldozer, 12'x5" blade, 40 ton winch on rear, 75% UC, \$8000 OBO. 717-432-3219

87 Bomag 120 vibratory roller, 3-6 ton, good condition, 48" drums, \$5900 OBO. 717-872-4897

Cat 613 pan earth mover, very good condition, \$18,000. 856/455-2799

Cat 931B crawler loader, exc cond, 90% U/C, 4,000 hrs. \$14,900. 570-752-7131.

Miller Legend Generator Welder, 18hp, Owanan Eng., 200DC amp, \$1,100. 570-799-0178.

943 track loader, 60% UC, good shape, \$28,000; PC60 Komatsu track hoe, good shape, 16 24 & 36" buckets, \$15,500. 717/692-2359

Street plates: (4) 6'x10'x1". (2) 8'x10'x1", \$500/ea. 215-269-0900

Ho-Pac compactor for backhoe, \$2000. 215-269-0900

'88 Cat D3-C dozer, U/C 50%, OROPS, 3500 hrs, good cond, \$17,000. 215-269-0900

Raygo Rustler dirt roller, 84 inch smooth drum, cab, good cond, \$17,000. 215-269-0900

'91 Cat 963 track loader, U/C 85%, OROPS, 10,125 hrs, ex cond, \$55,000. 215-269-0900

'96 Cat D5, MLGP, new U/C, OROPS, 2200 hrs, ex cond, \$64,000. 215-269-0900

1986 Dresser TD7E Track Loader, VG cond., \$16,500. 814-652-9854.

Construction truck bed: scissors lift, 20'x7' platform, goes 18' high w/ Reading truck body mounted on a 1968 Int 1700 4WD Loadstar. Truck runs but is not inspected or road worthy. Bed & scissors lift is good & could be mounted on a different truck. This truck was used very effectively as a work platform, material lift & tall storage for a pole barn crew. Call 6:30am-5pm, M-F, 717-354-4471.

Generator Set, 75KW, 120/208, 3-phase elec machinery, propane fuel, low hrs, \$2100 obo. Michigan elevator scraper pan, 471 GMC, 13 yd, PS, \$9500. AC CA w/Woods 6' under belly finish motor \$1800 obo. '95 Chevy 2500 dsl, 6.5, AT, AC, PS, 105k, \$6300 obo. 215-348-7882

Case 530 or 630 tractor in any condition. George, 814-237-1000.

**'95 NISSAN 5,000# Forklift**  
187" TSU, Sideshift, LP, Auto, Very Good Cond., \$4,900.00  
Call Mike (717)291-0754

**Cat 963 Loader, SS#21Z00627,** good cond, very good U/C \$35,000  
**Samsung SE280LC-2, AC,** 3676 hrs ex cond, \$65,000  
**Ford 250C Tractor w/flail mower** side & back, good cond \$10 500  
**TCM forklift #FG25N5T,** triple stage free lift mast, 3400 lbs., 2460 Hrs , ex cond \$10 000  
**WILMER KING REPAIR**  
302-492-3453

**Park Pumps & Controls, Inc.**  
950 Mt. Holly Road/Edgewater Park, NJ 08010  
**Phone: (609) 871-0944 Fax # (609) 871-2987**

3" CH&E Diaphragm 3 5 Briggs	650
3" Gorman-Rupp - Carter Trash 8 H P Wisconsin	\$850
2" Barnes Centrifugal H H Wisconsin	\$750
3" Gorman-Rupp Trash Standard New 8 H P Briggs	\$1,800
3" Homehte Trash	\$400

**Caterpillar D6H Dozer**  
\$59,000  
Sale or Rent

**Heavy Equipment Loader Parts, Inc.**  
10070 Allentown Blvd. Grantville PA 17028  
No Sunday Calls (717) 469-0039

**Harlo 6000 Ruff Terrain Forklift,** 6,000 lb. lift, 21' mast, side shift, excellent cond., \$10,750  
**856-769-0787**

- **87 Eager Beaver Trailer,** 20,000 GVW, 23ft. deck, 2 axle w/side enclosures..... \$2,200
- **(New) Asphalt Sprayer** Skid mtd., 108 Gal. capacity, 5.5 Honda, 10 Gal. Min. Pump system w/flushing tank, 410,000 BTU Vapor Unit, insulated..... \$3,100
- **Tampo Roller RS 16 sm. drum** GM diesel..... \$7,500
- **Grove 18 Ton TMS 180,** clean .. \$21,00
- **Bucket Truck,** 36 ft. on Int'l w/utility body..... \$4,800

**Call Jack 301-371-9346**

**Clark C500Y100,** 10,000 lb capacity, Pneumatic, LPG, 2 speed auto, mast 96 down/114 up, 48" forks, P/S, strong machine \$5,500  
**C. Betz Forklift Sales & Service**  
717-485-0410