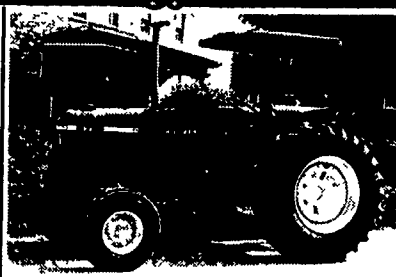




Ford 5030, Cab, 4WD, Shuttle, 1,100 Hrs.



JD 2755, Canopy, Hi-Low, 18.4x30, 4,300 Hrs.

FORD TRACTORS

- 8670, cab, air, 4WD, super steer, 3,400 hrs
- TW-15 II, c&a, 4 WD, 20 8R x 38, 3 remotes, 2,900 hrs
- 8530, cab & air **SOLD** 4 x 38, 1,100 hrs
- 7710 II, cab, air, 4WD, 18 4x34, 3,000 hrs
- 7710 II, cab, air, DP, dual remotes, 2,500 hrs
- 7710 II, 2WD, canopy, 16 9x38, weights, 1,800 hrs
- 7710, cab, air, DP, dual remotes, 18 4x34, 2,400 hrs
- 7710, 2WD, DP, dual remotes, 18 4x34, 1,800 hrs
- 7610 II, DP, dual remotes, 16 9x30, 600 hrs
- 6635, cab, air, 18 4x34, 24x12, 1,800 hrs
- 5030, cab, 4WD, shuttle, 1,100 hrs
- 5000, diesel, 8 spd, 1971 model
- 4000 SU, diesel, 8 spd PS, 4,700 hrs
- 3930, 4WD, shuttle w/Ford ldr, 600 hrs
- 2000, gas, 8 spd, pwr steering
- 1920, 4WD, shuttle, ldr, turf, 1,900 hrs
- 1620, 4WD, hydro, turf, ldr, 2,600 hrs
- Kubota B21, 4WD **SOLD** w/backhoe, 600 hrs
- Kubota L2550, 4WD, turf, 60" mid mower & ldr, 800 hrs
- Kubota B1700, hydro, turf w/ ldr, 700 hrs
- Farmall 806, diesel, turbo, cab, duals

JOHN DEERE TRACTORS

- 2955, 4 post, 18 4x38, hi-low, 3,300 hrs
- 2755, cab, air, 4 WD, hi-lo, 18 4x30, 2,900 hrs
- 2755, canopy, hi-low, 18 4x30, 4,300 hrs
- 2640, hi-low, dual remotes, 1000 PTO, 15 5 x 38
- 2555, cab, air, 8 spd, w/JD ldr, 2,400 hrs
- 2440, hi-low, 16 9x28 w/146 ldr, 3,900 hrs
- 2350, hi-low, 1 remote, 16 9x30, 2,300 hrs
- 855, 4WD, turf w 72" mid mower, 1,600 hrs
- 850, 2WD, 22 h p w/ldr, 650 hrs

EQUIPMENT

- NH LX885, skid loader, 2,500 hrs
- NH FP230, chopper, 3RN, corn & hay head
- NH 575, baler, hyd tension, belt thrower
- NH 492 **SOLD** line
- NH 28, blower
- NH 824, corn head
- Ford 515, sickle bar mower
- NH 52LA, loader fits 35 & TL models
- Ford 7310, loader fits 3930 to 5030
- Ford 7209, loader fits 3930 to 5030, 2WD
- JD 146, loader w/valve
- JD pallet forks, fits 245 loader
- Woods MS, 3 pt, 5' rotary mower
- Weights to fit most Ford tractors

★ Lease & Financing Available ★
★ Please Call For Appointment ★

★ All Tractors Tested On Our Farms ★
★ Tractors Stored Inside ★

Burkholder Bros. Tractor

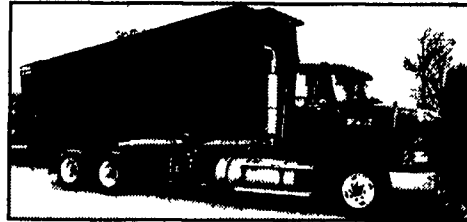
400 Flintville Rd., Lebanon, PA 17042
(2 miles from Schaefferstown on Rt. 419 South. Turn right on Flintville Rd.)
2 Locations

717-272-2352

Lloyd Burkholder
330 Crest Rd., Lebanon, PA

717-949-2123

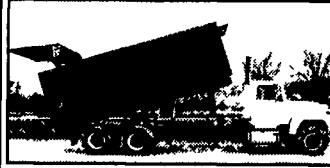
Leon Burkholder
400 Flintville Rd., Lebanon, PA
Fax: 717-272-2352



1994 Mack, 350 Mack, Jake, AC, Cruise, Tilt Wheel, 9 Spd, 12-40 on Hendrickson Air Leaf with 2260 ALLStar Roll-Off and 4000 Gal. Tank. All for \$55,000.



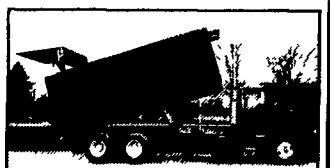
1988 IHC 8300, 315 Cummins, 9 Spd, 12,000 Fronts, 40,000 Rears with 2060 ALLStar Priced at \$20,000.



1987 LNT Ford, 315 Cummins, 9 Spd, 12,000 Front, 38,000 Rears, with 2060 ALLStar Priced at \$24,000



1995 L9000 Ford, M11 Cummins 280 HP, 9 Spd, AC, 12-40 On Air, 400,000 Miles, Florida Truck - Very Clean - with 2260 ALLStar Priced at \$36,000



Call Toll Free 1-888-278-2639

or visit us at www.usabody.com
994 Middle Lake Road, DeRuyter, NY 10352

BODY INSTALLATION CHASSIS AVAILABLE FOR

- 1990 IHC 9400, 425 Cat, Jake, 13 Spd, AC, 40,000 Rears
- 1991 Mack CH, 350 w/Jake, 9 Spd, AC, 12 40 on Air
- 1995 IHC 8200, M11 Cummins, 350 HP, 9 Spd, AC, 400,000 Miles, Very Clean
- 1996 IHC 8200, M11 Cummins, 350 HP, 9 Spd, AC, 400,000 Miles, Very Clean
- 1996 IHC 8100, DTA530, 300 HP, 9 Spd, AC, 128,000 Original Miles, Like New
- 1987 Mack R Model, 300 w/Jake, 6 Spd, 44,000 Rears on Camelback, Will Take 18' Body

- 1995 Volvo GMC, M11 Cummins, Jake, 9 Spd, AC, 400,000 Miles, 12 40 On Air, Very Clean
- 1991 CH Mack 350, w/Jake, AC, 13 Spd, 12 40 on Reyco, Very Clean
- 1991 Mack CH, 350 w/Jake, 9 Spd, AC, 12 40 on Air
- 1994 CH Mack 350, Jake, AC, 9 Spd, 12 40
- 1997 CH Mack 427, Jake, AC, 13 Spd, 12 40 on Air
- 1993 IHC 9400 L10, 300, Jake, AC, 9 Spd, 12 40 on Air
- 1990 Ford 8000, 7 **SOLD** Ford, Allison Automatic Trans, 16 Fronts, Double Frame

John Myers, Myers Diesel & Equipment, 1900 Hartzok Rd., Chambersburg, PA 17201

717-263-2000

Authorized USA Body Dealer for PA, DE, MD & VA

SEE
MAP
BELOW

GUNTHER HEUSSMAN INC.

4801 S. 5TH ST., EMMANUS, PA 18049 610-965-5203

Delivery
&
Financing
Available

WE ARE CASH BUYERS FOR CLEAN, LATE MODEL FARM EQUIPMENT

QUALITY TRACTORS

- JD 7810, Cab, Air, Power Quad, MFD, Triple Remotes, 900 Hrs, Ex. Cond
- 2000 JD 7510 Cab, Air, MFD, Power Quad, 1000 Hrs., Triple Remotes, 18x38 Rack & Pinion, Like New
- 2000 JD 6410 Cab, Air, 24 Speed, Power Quad w/Left Hand Reverser, MFD, w/640 Loader, 1015 Hrs, Ex Cond
- JD 2955 Cab, Air, Hi-Low, 2900 Hrs., Exc. Cond.
- JD 2755 Cab, Air, MFD, Hi-Lo, 3000 Hrs, w/245 Quickattach Loader, Very Nice
- JD 2750, Cab, Air, Hi **SOLD** Hydraulics, V. Nice
- 1984 JD 4850, Cab, Air, MFD, Triple Remotes, 18x42 w/Duals, 3100 Hrs, Ex. Cond.
- 1986 JD 4450, Cab, Air, Quad, MFD, 3500 Hrs, 20x38 Tires, Ex Cond
- JD 4450 Cab, Air, MFD, 15 Speed, Power Shift, 4000 Hrs., Very Nice
- JD 4250 Cab, Air, 15 Speed, Power Shift, 20x38 Rubber, Good Cond.
- 1980 JD 4440 Cab, Air, Power Shift, 4800 Hrs, Triple Hyd., Very Nice
- 1977 JD 4430, Cab, Air, Quad, Triple Hyd., Very Nice
- JD 4020 Diesel, Side Console, WF, Dual Hydraulic, Syncro Range, Good Cond.
- JD 1530 Diesel, 38" Rack & Pinion, Good Cond.
- IH 1086 Cab, Air, Dual Hyd. & PTO, 4500 Hrs., Good Cond.
- IH 766 Diesel, Cab, Air, 2300 1-Owner Hrs., Ex. Cond.

**QUALITY COMBINES
Displayed Inside Building**

- 1995 JD 9500 4x4, Harvest Track, Fore & Aft Chopper, 30x32 Rubber, 1500 Hrs, Very Nice
- 1995 JD 9400, Fully **SOLD** d, 1200 Hrs., Exc. Cond.
- 1986 JD 6620 Titan II, 2000 Hrs., Fully Equipped, Ex. Cond.
- 1984 JD 4420, 700 1-Owner Hrs., Fully Equipped, Like New
- 1982 JD 4420, 1400 1-Owner Hrs., Fully Equipped, Ex. Cond.
- 1984 JD 4420, 2400 Hrs., Local Trade, Good Cond.
- Gleaner Deutz Allis R52 Cab, Air, Hydro, 1200 Hrs., Ex Cond.
- 1985 MF 850, Cab, Air, Hydro, Very Nice

1984 MF 550 Cab, Air, Hydro, 1700 Hrs., Ex. Cond.

**HIGH QUALITY CORN AND GRAIN HEADS
50 Corn Heads & Flex Heads To Choose From**

- JD 920, 20 ft Flex, Fore & Aft
- JD 915, 15' Flex
- JD 915, 15' Flex, Side Hill
- JD 215 Flex
- JD 213 Flex, Cut 500 Acres
- JD 213 Flex
- MF 1859 15' Flex Head
- JD 643 6RN, Low Tin Oil Bath
- JD 444, 4RW Low Tin
- JD 444, 4RW, Hi Tin
- JD 443 4RN, Oil Bath
- JD 443, 4RN Hi Tin
- Case IH 1020, 15 ft Flex
- Case IH 1063, 6RN
- IH 820, 13' Flex
- IH 843, 4RN
- IH 963, 6RN
- MF 9013, 13 Ft. Ridgid Head
- MF 1859. 13 Ft. Ridgid Head
- MF 1163 6RN
- MF 1144, 4RW
- AC FII, 315 Flex Head
- AC Black 430, FII, 4RN
- AC F11 13' Flex
- AgCo 15' Flex, R Series
- AgCo 6RN Hugger

MISCELLANEOUS EQUIPMENT

- Brillion 10' Seeder w/Transport Wheels, Exc. Cond.
- JD 750, 15' No-Till Grain Drill w/Dolly Wheels, Good Cond.
- JD 7000, 6RN, Dry Fert, Insecticide, Monitor, Row Cleaners, Good Cond.
- Ford NH 355 Grinder Mixer, Hyd. Drive, Ex. Cond.
- JD 27 Stalk Shredder, Good Cond.
- NH 355 Grinder Mixer, Hyd Drive, & Scales, Good Cond
- JD 175 Loader To Fit Utility Tractors
- Artsway 426A Grinder Mixer, Ex Cond
- Axle Mount Duals To Fit IH 856 Thru 1486, JD 4440 & 4450, 4020 & 4320
- Cabs To Fit JD 3020-4020-830 Thru 2640
- Degelman Rock Picker, PTO Reel, Good Cond.
- Case IH 15 Ft. Stalk Shredder, Very Nice

TILLAGE EQUIPMENT

- JD 712, 11 Shank Soil Saver, Ex. Cond.
- Glenco 11 Shank Soil Saver
- Case IH 6500, 9 Shank Soil Saver, Very Nice
- JD 722, 15 Ft. Mulch Finisher w/Spring Tine Harrow, Very Nice
- IH 720 5x18 Spring Rest Plow
- IH 735 Variable Width, 5 & 6 Base Spring Reset
- MF 820 21' Hyd. Fold, Rock Flex Disc, Very Good

Krause 20' Hyd. Fold Disc, Ex. Cond.
JD 215 12' Disc, Ex. Cond.

CORN PICKERS

- JD 300 Husker, w/2 or 3R Head, Good Cond.
- NI 325 2RN, 12 Roll Bed, Good Cond.
- NI 324 2RW, 12 Roll Bed, Good Cond.
- NI 323 1R, Good Cond.

QUALITY HAY EQUIPMENT

- NH 1034 Bale Wagon, 105 Bale Cap, Single Bale Unloader & Retrieve, Good Cond.
- NH 1030 Bale Wagon, 70 Bale Cap, Good Cond.
- Case IH 8575 Large Square Baler, Silage Spec., Ex. Cond.
- JD 676 6R Forage Head, Good Cond.
- JD 337 Baler w/30 Ejector
- JD 327 Baler w/40 Ejector, Good Cond.
- JD 327 Baler w/**SOLD**ite, Very Nice
- NH 311 Baler w/70 Thrower
- NI 484 4x5 Round Baler, Exc. Cond.
- NH 477 7' Haybine
- Woods 9204 Batwing Mower, Like New
- NH 451 7' Sickle Bar Mower, Good Cond.
- JD 7' Pickup Head w/Guage Wheels
- JD 350 3pt., 7' Sickle Bar Mower
- JD 606 3pt, 6' Rotary Mower
- JD 3RN Forage Head, Ex. Cond.
- JD 2RN Green Forage Head
- NH 258 Rake, Dolly Wheel, Good Cond.
- JD 1018 10 Ft. Off Set Rotary Mower, Like New

