

36

REAL ESTATE

Where Country is still Country

Fulton County
Log Home, 3BR, 2 1/2 BA, stone fireplace on 5 ac. treed lot, borders 5300 ac. of gameland, \$195,900.

Long & Foster RE
800-458-0272
717-485-0381

748 - HALIFAX - spectacular 14 ac estate w/360 degree view Decks overlooking pool & river valley 2520 ft rd frontage All beautifully landscaped 2848 sq ft 4 BR. 3 full bths \$399,900.

857 - GRATZ - Split rock 2 sty 4 BR, 2 bth FP in LR, lg covered porch/patio, w/att gar plus 2C det gar w/extra 872 SF \$177,900.

864 - MILLERSBURG - 2 sty custom built w/view of town & river has professional office or in-law qtrs w/sep entrance 3 BRs, 4 full bths, great rm w/FP & much more \$224,900.

907 - NEW LISTING - HALIFAX - 73+/- ac farm w/totally remodeled log house, new hardwood floors & ceramic floors Great country location, new septic A must see! \$395,000.

Century 21 Carl Snyder
717/896-8808, 717/979-8042
www.century21snyder.com



DIANA KEILHOLTZ-GUNDER

If You Have A Special Property You Need To Sell

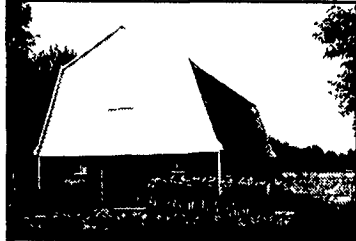
"Talk to Paul or Diana"

(800) 582-2534 ext. 9116

(877) 327-0910 Direct Line



PAUL GUNDER Selling Farms for over 22 years



ADAMS COUNTY - Pristine 86 acre farm w/ Showplace home. Small fruit orchard w/ grapes, & raspberries, 50 tillable acres, 5 ac pasture & 15 ac wooded w/bridge trail Restored 2 story farmhouse w/ fieldstone fireplace Barn & outbuildings are in MINT CONDITION Creek frontage \$435,000 (AD 4253661)

To view additional photos of properties please visit www.penmarproperty.com

- **ADAMS** - Renovated Stone house, lrg bank barn, 67 acres, creek, \$595,000 (10077257BS)
- **ADAMS** - Farmette w/15+ acres, 4 BR, 3 1/2 BA, home features small office off living room w/private entrance. Several outbuildings include workshop and storage Property in the "Clean & Green" Home Warranty! \$274,900 (AD4143863PG)
- **ADAMS** - Classic Civil War Era Farm on 60+ private acres Beautiful large restored brick home w/guest quarters Bank barn in excellent condition New 40x80 cedar barn w/kitchen All fenced! Greenhouse w/office, garage & bath. Views and great for horses! \$789,900 (2202731PG)
- **ADAMS** - New Oxford Horse Farm, lrg center aisle horse barn w/board fencing, garage & office, 3 BR Home newly refurbished \$225,000 (2110584MC)
- **CUMBERLAND** - "Horse or Cattle", Stone house, 56 acres, \$399,900 (10075664JM)
- **FRANKLIN COUNTY** - 195 acres w/beef barn and hog finishing buildings 110 tillable, 63 pasture and creek frontage Very nice home with first floor master suite. Very private end of the road farm in excellent condition - well managed \$925,000 (FL4180567PG)
- **FRANKLIN** - Rose Hill, Private, brick house, 86 acres \$325,000 (FL4068859HB)
- **FRANKLIN** - 10 acre Farmette w/remodeled farm house, \$244,000 (FL4250463)
- **FRANKLIN** - Beautiful 17 1/2 acre Horse farm w/indoor riding arena, \$369,000 (FL4242694)
- **FRANKLIN** - Beautiful location in Dover, PA 150 20 acres "Clean & Green" turnkey cattle operation ready for occupancy Brand new double wide trailer as well as 2 car garage 25x26, office - 16x20, Pole barn with dirt/gravel floor and additional uncovered feed lot \$900,000 (FL4254735)
- **FRANKLIN** - Horse Farm, turnkey horse facility on 74+ acres Bank barn w/stalls, large indoor arena 13 stall center aisle barn, auto waterers and more Priced Reduced \$550,000. (FL3476218PG) **SOLD**
- **FRANKLIN** - Small farm operation, 4 Br house, 70 acres, \$350,000 (FL4049714RM)

Schedule a market consultation with Paul or Diana

- **FULTON** - Custom built log home situated on 33+ acres 2 BR, 2 full BA, tongue & groove pine floors, loft, creek frontage, 2 decks, hot tub, skylights Located in the "Clean and Green" Very private! \$325,000 (FU4210945PG)
- **SO. HUNTINGDON** - Turnkey Dairy Farm w/140+ acres 100 tillable and 35 of pasture Includes a 30x75 storage/equip Shed w/5 bays, 45x72 bank barn, 24 5 ton capacity feed bin w/unloading auger and standby generator system \$625,000 (HU3462036PG)
- **YORK** - Old Civil War stone home, bank barn, indoor arena horse training facility, 25 acres, \$700,000 (2203661MP) **UNDER CONTRACT**
- **YORK** - Horse farm, bank barn w/stalls, secluded w/pond, \$770,000 (10076456BS)
- **YORK** - Stonehouse w/4 BR, pool house, 150 acres, peaceful seclusion, \$995,000 (2201846MR)
- **YORK** - Great for horses! Stone house, 28 acres \$325,000 (10070923BS)
- **YORK** - Executive home situated on 35+ acres Property includes lrg barn w/outbuildings, breakfast rm w/bay window, 2nd flr living area w/kitchenette, wood flrs MBR suite w/full Ba, creek frontage, add'l 35 acres available \$525,000 (YK4018936PG)

We need dairy and horse farms of all sizes



Paul Gunder
Jack Gaughen Realtor ERA
1 (800) 582-2534 ext. 9116

To view additional photos of properties please visit www.penmarproperty.com

Member of PA Farm Bureau

House with Outbuildings & 40 Acres
4 Fireplaces, 8 Bedrooms,
Newly Remodeled, 90% Done,
30x30 Sunroom,
New 56x36 Shop w/Water, Heat & Elec.
Great Hunting Lodge or
Bed & Breakfast.
Located in Bradford Co., PA
\$150,000
717/369-2717

SANFORD G. LEAMAN, REALTOR/AUCTIONEER

101 White Oak Drive, Lancaster, PA 17601-4842
717-569-4264 - Toll Free 1-800-836-8113
- FAX 717-569-8847

"Specializing in Farms, Mountain land, & Farm Equipment"
"The Auction Method & Brokerage"
See us on the Web "www.lamnauct.com"
Email farmboy@lamnauct.com

Northern Lancaster Co. Poultry & beef farm This pullet operation and nice beef bank barn is ready with an ongoing contract Let me show you this one now It will only be shown to serious qualified BUYERS NO drive by Call for a personal tour and pricing
Tioga Co. 300 Acres **SOLD THIS WEEK**
Needed Now!

I Need 6+ Farms Q-Ville South & into Chester Co.

- #1 Farm with parlor and lots of acreage for next spring or fall of 2003 This farm should be located in central PA with level to gentle slope terrain Will pay competitive pricing for farms of the area An IRC 1031 Tax Deferred Exchange will be used
- #2 Farm should be for 80 to 100 cows on comfort stalls 2 houses is a plus Level to gentle slope and 200 to 300 acre as depending on location Could be central to northern PA IRC 1031 Tax Deferred Exchange will be used by the buyer as his property is Sold Still have many many other needs with ready willing & able buyers for this fall and next Spring

Call me first if you are thinking of selling.

Koch Homestead Realty

91 Princeton St Wellsboro, PA 570-724-3500
9 North Main St Mansfield, PA 570-662-3287
403 E Main St, Elkland PA 16920 814-258-7117

W518 - Great opportunity for someone looking to invest Commercial building located on busy Main St in downtown Wellsboro Includes 2 retail leases and 2 apartments Finished basement and second floor Excellent condition \$289,500 #110947.

W002 - A great out-of-town property! This 3 bdrm, 2 1/2 bath ranch is situated on 10 26 wooded acres Located on a quiet country road, this home has a full finished basement, large work shed, fireplace and wood stove to assist with heating expenses Call today for an appointment \$121,500. #110819.

M132 - NICE RANCH HOME on 109 acres 3 bdrms, 1 full & 2 three-quarter baths Partially finished basement Commercial & subdivision possibilities Borders Rt 15 and Mansfield Boro line \$285,000. #104154

E286 - 37 acre tract south of Elkland combines woods, field, creek, and hardtop road frontage for an all-inclusive rural parcel Perc approved, survey complete, survey pending \$46,000 #111388

Visit our web site www.koch-real-estate.com

NORTH MOUNTAIN AREA - Approx. 4-1/2 partially wooded Acres close to state land, great location for cabin or dream house, perced, \$47,500.

NEWBURG RD. (Lurgan Twp) - Beautiful 2-Story Farmhouse on 18 Acres (2 tracts) of privacy, home features 4 bedrooms, modern country kitchen, hot water heat (fired by oil wood or coal), lg barn, outbuildings, & garage, absolute move-in condition, only \$244,900

SHIPPENSBURG AREA - Approx. 3 Acres with a crisp & clean Brick Rancher that offers 3 bedrooms, country kitchen, formal dining room & more, PLUS small barn w/elec. and garage, property has been well cared for, no current twp. zoning, \$149,900

SHIPPENSBURG AREA - Roomy Cape Cod on approx 2 Acres, features 3 or 4 bedrooms, kitchen w/appliances, huge living room (28x12), hot water heat, full basement & lots of updates, private location, \$127,600.

ROWE RUN ROAD - Commercial-type Building w/approx. 5700 S.F situated on 3 Acres, endless possibilities, no current twp. zoning, loading dock, office, warehouse, \$200,000

DEVELOPMENT POTENTIAL (Shippensburg Boro) - Approx 13 Acres of PRIME residential property waiting to be developed, utilities near, call for details, \$189,000 NEW LISTING

SHIPPENSBURG RD. - 40(+) ACRES with large barn & road frontage, land is perced for on-lot septic, priced to sell, only \$148,900

Don't see what you're looking for, Call Us, We Have Many Others

SAILHAMER REAL ESTATE, INC.
Shippensburg, PA 17257
717/532-6059

Harry Machtan Realty Inc.

317 Oak Street Baraboo WI 53913

Clark County dairy farm. 80 acres with 2-story barn, silos, sheds and 5 bedroom home \$240,000

Loyal area. 5.7 acres rolling land. Bi-level home with 4-5 bedrooms and attached garage. \$115,000

More hobby farms in the Clark County area.

Farms from 40-400 acres available.

Office 608-356-8339
Mike Foley 715-255-9344
Bill Oestreich 715-255-8987
Visit us on the web at www.machtanrealty.com

ENDLESS MOUNTAIN REAL ESTATE CO.

(570) 659-5684 Covington, PA

TIOGA & BRADFORD COUNTIES

Tioga County: Anxious Seller! Comfortable 2 story home w/1520 sq ft of living, 4BR, 1 3/4 baths, completely remodeled kitchen in recent years, NG/FHA heat, 4 ceiling fans, 3 air conditioners, cozy rear porch, breezeway, over sized 2 car det garage, nice level lot, 0.80+/- acres, priced to sell! Reduced! \$65,000 (#986)

Tioga County: Commercial property for sale, 2 story building w/main street location, NG/FHA heat, 1/2 bath, large display windows, curbside parking, potential extra income w/upstairs apartment in need of repair, excellent location for small business or shop! \$10,000 (#987)

Tioga County: Pleasant country-like setting for your double-wide, wide, modular, or custom-built home, 1.52+/- acres, mostly open field, conventional in-ground septic system already installed, NG/electric available, borders paved road, check it out! \$25,200 (#988)

Tioga County: Nice level lot of your recreational enjoyment 2.78+/- acres, mostly overgrown shrubs NG/electric available, no approved soils available, borders minimally traveled road, State Lands nearby, call for details \$10,000 (#990)

www.endlessmtrealstate.com

E-mail: end@epix.net

CALL COLDWELL BANKER

FARM & RURAL PROPERTY DIVISION
NEW! FREE VIDEO TOURS AVAILABLE ON CD
CENTRE COUNTY

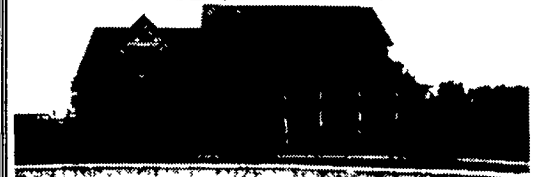


Nittany Valley - 102 acre general farm with 77 acres tillable, 7 acres pasture, 16 acres woodland, and 2 acres site area Very nice home, two story bank barn, implement shed, nice setting away from traffic View our complete brochure and 30 picture slide show at www.cbcr.com or call for details. **Price Reduced**

FREE CD video tour available

If You Want the Most Complete Farm and Rural Property Marketing Plan Available Visit the Farm and Rural Property Division at www.cbcr.com View farm, farmette, rural acreage, woodland and cabin brochures and slide shows. If you don't have Internet access call toll free for detailed brochures and list.

STATE COLLEGE AREA



State College Area - SBR 4 1/2 Bath stately home on 11 acres, 10 acres zoned agricultural, horses allowed Land is private and professionally landscaped Expansive 50' deck. Interior is elegantly decorated and enhanced with plenty of natural light. Formal living room & dining room. Lower level with family room, bedroom & bath. \$795,000

HUNTINGDON COUNTY



New Listing Warriors Mark Area - 107 acre general farm, 69 acres tillable, 33 pasture, 3 woodland, 2 acres site, 2-story bank barn, 1-story free stall dairy barn, 2 silos Nice rural area Small stream, no house \$295,000 View our complete brochure and 26 picture slide show at www.cbcr.com or call for details **FREE CD video tour available.**



Don Myers
814-422-8111
e-Pro Certified



Dale Sherrin
814-692-8149

(Residence Numbers)



UNIVERSITY REALTY

126 E. Foster Ave., State College, PA 16801

800-669-4925 Toll Free