

FLATBED BODIES

Lengths to 32', choice of 5 widths

GRAIN BODIES

Lengths to 24', landscape and general purpose dumps to 12'

LANDSCAPE BODIES

Lengths to 12' We'll build to your specs!

Eby is the leading manufacturer of aluminum bodies and trailers for agri-transportation. Our products are designed for superior strength, reduced weight for greater payload capacity, minimum maintenance and higher resale value. In addition to premium standard features, we offer full custom options built to your specs.

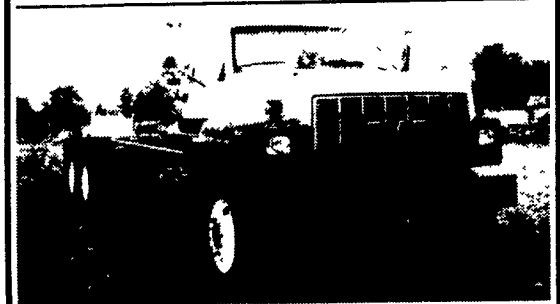


**IN ALUMINUM BODIES
EBY BUILDS IT**

**Blue Ball, PA
800-292-4752**



1988 Chevy Truck
33,000 GVW, 136K Diesel, 210 H.P., 6 Sp.,
Runs Like New • \$10,900



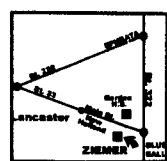
1994 G.M.C.
3116 Cat, Auto, 6 PS, AC, Heated Mirrors,
44,410 G.V.W., 72103 • \$13,900.00
18' Ensilage Body=Hoist Mounted On Above
Truck or Other Truck..... \$11,800.00
Truck + Body=Hoist \$23,900.00

Now Available ~~So-off~~ All Purpose Truck Bodies
and Hoists Made To Your Specifications.
Also Truck Fabricating & Welding.
Call For Quote
F.M.I. Feedmobile, Inc.
717-626-2680

Ziemer is your **ONE STOP TRUCK SHOP!**

<p>1995 JEEP WRANGLER 4x4, Auto, PS, PB, Tilt, Cass, Hard Top, Alloys, Step Bars, 44,000 Orig Miles! None Nicer! Another Beautiful Local Trade! Was \$10,987 Now \$9,950</p>	<p>1995 CHEVY 1500 EXT CAB SILVERADO, AC, PW, PL, Cruise/Tilt, CD, Capt Chairs, Alloys, Super Sharp! Another Beautiful Local Trade! Was \$11,475 Now \$9,950</p>	<p>1997 GMC SIERRA 1500, Ext Cab SL 4x4, V8, Auto, AC, PL, Cruise, Tilt, CD, Super Sharp! Another Beautiful Local Trade! Was \$14,987 Now \$12,950</p>	<p>2002 CHEVY S-10, Auto, AC, 4800 Orig Miles!, Save BIG! Another Beautiful Local Trade! Was \$14,987 Now \$12,950</p>	<p>1997 DODGE DAKOTA EXT. CAB SPORT 4x4, V6, AC, Cruise/Tilt, Cass, Alloys, Low Miles, Super Sharp! Another Beautiful Local Trade! Was \$14,995 Now \$12,987</p>
<p>1996 GMC SIERRA 1500 SLE 4X4, 350 V8, Auto, AC, PW, PL, Cruise/Tilt, CD, Alloys, Super Sharp! Another Beautiful Local Trade! Was \$14,995 Now \$13,472</p>	<p>1996 CHEVY 1500 EXT CAB 4x4 V8, Auto, AC, Cruise/Tilt, Cass, Alloys, Cap! Super Clean! Another Beautiful Local Trade! Was \$15,995 Now \$14,900</p>	<p>1997 GMC SONOMA EXT CAB SLS 4X4 V6, Auto, AC, Cruise/Tilt, CD, Alloys, Super Clean! Another Beautiful Local Trade! Was \$15,995 Now \$14,987</p>	<p>1999 GMC JIMMY SLE 4X4, 4 Dr., V6, Auto, AC, PW, PL, Cruise/Tilt, CD, Leather, P Seat, Alloys, P Moonroof, Tutone! Another Beautiful Local Trade! Was \$16,990 Now \$15,900</p>	<p>1999 JEEP GRAND CHEROKEE LAREDO 4x4, 6 Cyl., Auto, AC, PW, PL, P Seat, Cruise/Tilt, Cass, Alloys, Super Cool! Another Beautiful Local Trade! Was \$19,987 Now \$15,900</p>
<p>1995 FORD F150 S/CAB 4x4 EDDIE BAUER, V8, Auto, AC, PW, PL, Cruise/Tilt, Cass, Alloys, Boards, Super Clean! Another Beautiful Local Trade! Was \$16,995 Now \$15,987</p>	<p>1997 FORD F150 S/CAB 4X4 LARIAT, V8, Auto, AC, PW, PL, P Seat, Leather, 17" Wheels, Immaculate! Another Beautiful Truck! Was \$20,997 Now \$16,900</p>	<p>1999 DODGE GRAND CARAVAN SE, V6, Auto, Dual A/C, PW, PL, Cruise/Tilt, Cass, Quad Seats, Super Low Miles! Another Beautiful Local Trade! Was \$17,995 Now \$16,987</p>	<p>1999 GMC SIERRA 2500 EXT CAB SL, 4x4, 350 V8, Auto, AC, Cruise/Tilt, Cass, Powered Wheels, Super Sharp! Another Beautiful Local Trade! Was \$20,995 Now \$17,900</p>	<p>2000 CHEVY BLAZER 4X4 ZR2, V6, Auto, AC, PW, PL, Cruise/Tilt, P Seat, P Moonroof, CD, Alloys! Super Sharp! Another Beautiful Lease Return! Was \$18,995 Now \$17,987</p>
<p>2000 PONTIAC MONTANA EXT., V6, Auto, AC, PW, PL, Cruise/Tilt, P Seat, 4 Dr., Alloys, Low Miles! Another Beautiful Local Trade! Was \$19,995 Now \$17,987</p>	<p>1998 GMC 2500 EXT. CAB SLE 4X4, V8, Auto, AC, PW, PL, P Seat, Cruise/Tilt, Cass, Sharp TuTone! None Nicer! Another Beautiful Truck! Was \$22,995 Now \$18,900</p>	<p>1997 FORD F250 XLT SUPERCAB 4x4 351 V8, Auto, AC, PW, PL, Cruise/Tilt, Sharp Tutone, Alloys, You Won't Find A Nicer H D! Another Beautiful Truck! Was \$20,987 Now \$19,472</p>	<p>1999 CHEVY 1500 EXT. CAB LS 4X4, 5.3 V8, Auto, AC, PW, PL, P Seat, Cruise/Tilt, Capt Chairs, Z71, Low Miles! Another Beautiful Local Trade! Was \$23,995 Now \$19,900</p>	<p>1998 CHEVY 1500 EXT CAB 4x4 Z71, 350, V8, Auto, AC, PW, PL, Cruise/Tilt, Alloys! Low Miles! Another Beautiful Local Trade! Was \$22,475 Now \$20,987</p>
<p>2000 GMC SIERRA 1500 SLE 4 Dr. Ext Cab, 4x4, 5.3 V8, Auto, AC, PW, PL, Cruise, Tilt, Low Miles! Another Beautiful Local Trade! Was \$26,995 Now \$22,900</p>	<p>1999 GMC 3500 2WD Dually, Crew Cab, 454 V8, Auto, AC, PW, PL, Cruise/Tilt, Cass/CD, Sharp! Another Beautiful Truck! Was \$27,987 Now \$23,900</p>	<p>2001 FORD F350 S/CAB, 4Dr Dually 4x4, Powerstroke Diesel, Auto, PW, PL, Cruise/Tilt, Capt Chairs, 6 Disc CD, 4.10 L/S Axle, Remote Entry, Tutone, Alloys, Super Low Miles, Another Beautiful Local Trade! Was \$35,995 Now \$32,987</p>	<p>2002 GMC SIERRA DENALI EXT. CAB, AW Drive, 4 Wheel Steer! PW, PL, Climate, Cruise/Tilt, Cass, 6 Disc CD, Onstar, Tow Pack, Chrome Wheels/Step Bars! Awesome! Was \$44,105 Now \$37,995!*</p>	<p>2002 GMC 3500 Crew Cab Dually 4x4 SLE, Duramax Diesel Allison Auto, AC, PW, PL, Cruise/Tilt, Keyless, Tow, Locked Diff, Cass/CD, The Ultimate Tow Machine! Was \$43,901 Now \$38,405*</p>

* Prices on 2002 Include Factory Rebates if Applicable, Prices Good Until 7-27-02 Tax and Tags Additional



ROUTE 23 EAST
Just 20 minutes from Lancaster!

NEW HOLLAND
Hours: Mon.-Thurs. 9-8:30
Fri. 9-6 & Sat. 9-3

www.ziemernewholland.com
Ziemer
A Name You Can Trust
● BUICK ● PONTIAC ● GMC TRUCK
354-4451 • 1-800-824-2277

We Are Trucks!