

7511 Allentown Blvd.
Harrisburg, PA 17112

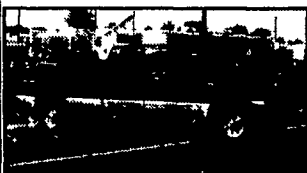
75 TRUCKS IN STOCK

AFFORDABLE CARS AND TRUCKS, INC.
"You Gotta Believe!!"

717-652-1925
FAX 717-652-4888
www.autotrader.com/view/affordable car and truck

New Exit #72A, Rt. 81 N; Rt. 22 East of Harrisburg; 3 Miles North of Hershey Park

95 FORD E350 CLUB VAN XLT
5 8 V8, AT, Dual Heating & AC, 18 Passenger, Power Everything, Very Clean & Sharp! 100,000 Mi., **\$6,995**



00 FORD F350 XLT
Crew Cab, 4x4, Longbed, 7 3 Powerstroke, AT, AC, PW, PDL, Stereo CD, Alloys, All Black, 80,000 Mi., Beautiful Truck, As Always Wholesale Priced Here At Affordable **\$24,995**



89 FORD F250 XLT 4x4
Ext Longbed Centurian, 7 3 Diesel, AT, AC, PW, PDL, Stereo & Leer Cap! Only 120,000 Mi., Very Clean & Maintained! **\$7,995**



99 FORD F250 XLT 4x4
Quad Cab Longbed, 7 3 Powerstroke Dsl, Rare 6-Speed, AC, PS, PDL, Stereo, All Orig Red Finish, Showroom Condition! 102K Sale **\$21,995**



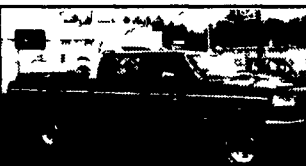
95 FORD F250 XLT 4x4
H D Ext Longbed, 5 8 V8, 5-Spd., AC, PW, PDL, Stereo, Expensive Color Keyed Leer Cap, 100,000 Mi., Very Beautiful Truck, Ready To Tow! **\$10,500**



97 DODGE RAM 2500 4x4
Ext Longbed SLT Cummins Diesel, 5-Speed AC, PW, PDL, Stereo Tilt, Cruise & More All Orig White Finish, Perfect Shape Must See! 102K **\$19,495**



96 FORD F250 XL
4x4, Ext Cab, Longbed, 7 3 Powerstroke Dsl, 5-Speed, AC, Cloth Seat, Looks & Drives Like 70K, Does Have 170K All Highway Light Pull, Must See & Drive! **\$13,500**



96 FORD F250 XLT
4x4 Crew Cab, Short Box, 7 3 Power Stroke, AT, A/C, PW, PDL, Stereo, Alloys & More, Only 81K, Real Clean Truck **\$17,995**



94 FORD F250 XLT 4x4
Ext Longbed, 2 Tone Green, 7 3 Turbo Dsl, AT, AC, PW, PDL, 100,000 Mi., Looks Like New! **\$11,500**



92 CHEV. 2500 4x4
Silverado Ext Cab Shortbed 2-Tone Paint, 350 V8, AT, AC, PW & Loaded Very, Very Clean Truck 100,000 miles **\$7,995**



98 FORD F350 SUPREME
16' Box Truck, 5 4 Triton Motor, AT, AC, Stereo, Roll Up Door & Plank, Tow Package, 100,000 Mi., All Maintenance Records - Perfect Shape! **\$10,995**



97 FORD F250 XLT 4x4
H D Ext Cab Longbed, 7 3 Powerstroke Diesel, AT, AC, PW, PDL, 2-Tone Grey/White, Tow Package, Very Clean & Well Kept, 102K **\$16,500**



97 DODGE RAM 2500 4x4
Laramie SLT Ext Longbed Cummins Turbo, Dsl, AT, AC, PW, PDL, 2 Tone Green/Silver, 90K, This Truck Looks Like It Never Was Used, Please Come & See To Believe **\$17,995**



94 FORD F250 XLT 4x4
H D PU 351 V8, Gas, AT, AC, PW, PDL, 100,000 mi. Very Clean Truck **\$7,495**



96 FORD F250XL
4x4, 7 3 Powerstroke DSL, 5 Spd., AC, Has 150K But Looks & Drives Like 50K, Come & See That I'm Correct - I Guarantee It! **\$12,500**



99 FORD F350 XLT Lariat 4x4
Super Duty Crew, Dually 7 3 Powerstroke Dsl, 6-Speed, AC, PW, PDL, Stereo, Tilt, Cruise, Leather, Very Clean, Well Maintained, 1-owner, 148K All Highway Unstoppable Puller! **\$20,995**



00 DODGE 2500 H.D. RAM
4x4 Laramie SLT, Quad Cab, 8' Bed, Cummins Turbo Dsl, AT, AC, PW, PDL, Stereo, Loaded, 90,000 mi., All Blue & Very Much Like Showroom Condition **\$21,995**



90 CHEV 1500 Silverado 4x4
350 V8, AC, PW, PDL, 5-Spd, 2 Tone Paint, 100,000 Miles, But This Is A Rare Extra Clean & Maintained Truck **\$4,500**



89 GMC 1500 Silverado 4x4
AT, 5 7 V8, AC, PW, PDL, Stereo, Tilt, Cruise, Leer Cap, Only 60,000 Miles, Perfect 1-owner Truck, Well Maintained **\$7,995**



93 FORD F250 XLT 4x4
Ext Cab, Longbed, 7 3 Turbo Dsl, 5 Speed, AC, PW, PDL, Stereo, Tilt, Cruise, This Truck Is In Showroom Condition & Must Be Seen & Driven, 100,000 Mi **\$13,500**



93 FORD F250 H.D. 4x4
Ext Cab, Longbed, 7 3 International DSL, 5 Speed, Nice Looking Truck Must See, 170K & Well Cared For! **\$7,495**



93 FORD HI TOP CONVERSION VAN
'Excalibur' Dual AC, Dual Heat, TV, VCR, V6, AT, Cruise, Tilt, Has Only 50,000 Miles, Must See, Ready To Travel **\$9,600**



92 DODGE DAKOTA SLT
4x4 Ext Cab, 318 V8, AT, AC, PW, PDL, 100,000 Mi., Nice Truck **\$4,500**



92 CHEVY K3500
Scottsdale 4x4 350 FI, AT, A/C, 9200 GVW, 3 73 Rear, 113,000 Mi, Dark Blue **\$8,900**



99 CHEVY K2500 SUBURBAN 4x4, LT
6 5 Turbo Diesel, Auto, AC, PW&L, Cruise, Tilt, Cassette/CD, Leather, P Seat, Rear AC & Heat, 4 10 Rear, Black & Pewter, 59,000 Miles **\$24,900**

MARTIN'S AUTO SALES
1025 W. Main St., New Holland, PA 17557
(717) 656-6621



1993 Int. Model 4900, DT466, 210HP, 6 Sp., AC, 35,000 GVW, 207,000 Miles, 22 Ft Morgan Steel Flat Bed



1996 Western Star Model 4964F, 3406E, 435 HP, 9 Sp., 80,000 GVW, 226,936 Miles, Hub Pilot Alum Wheels, AC



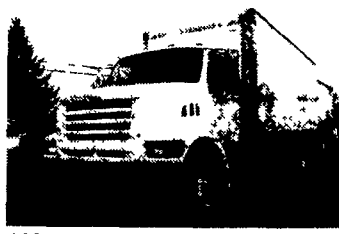
1998 Ford Van Model E350 Club Wagon, 7 3 Power Stroke Diesel, 210 HP, 9400 GVW, 151,405 Miles, Room For 12



1996 Freightliner FL-70, Cummins 8.3 250 HP, 6 Spd., Spring Susp., AC, 140,261 Miles, 33,000 GVW, 22 Ft. Reefer Body, Thermoking M D. II



2003 Western Star Model 4900 SD, Cat C-15, 475 HP, 8 Spd., Set Up For Tri-Axle, 17 1/2 Dump Bed, AC, Alum Wheels, Meritor FL-941 Pusher Axle



1998 Ford Model L8501, Cummins 8.3, 210 HP, 6 Spd., 32,800 GVW, 128,654 Miles, 22 Ft. Morgan Van Body, Roll-Up Rear Door (Will Separate)

RIFE MOTOR CO., INC.

768 N. Franklin St., Chambersburg, PA 17201

Ask For Steve Bender

Phone: (717) 263-8518 • Fax: (717) 263-4293



Best USED TRUCKS
of Pa. Inc.

131 Kline Rd., Bethel, PA 19507
We're Located Right On I78 @ Exit 17
WE BUY TRUCKS
717-933-9792
Fax 933-9782
www.besttrucks.net



1997 Freightliner FLD12064ST, 60" Flat Top, Cummins N14, 10 speed, 427k miles, gray in color, 2 79 rears, 238" wheel base, dual 120 gal polished tanks, 50% virgin rubber
\$18,000



93 KW W900L 62" Aerodyne II, Cat 3406E-425 hp, 15 speed, 11R24 5, 6 Alum wheels, VIT interior, gauge package, 3 55 rears, air ride, Jake brake, Mint Green in color
\$17,500



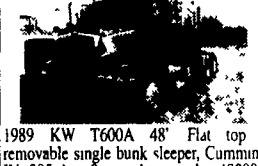
2001 BABB, 24" Aluminum Van, step up bumper, rollup door ramp, white
\$2,500



1995 24' Van Blue 2 curb side doors 2 road side doors, roll up rear door
\$2,000



1985 Ford E350 34 Baker boom, V8 Gas, Automatic, non-insulated, 360 degree non continuous rotation, generator, white, full operational
\$6,000



1989 KW T600A 48" Flat top / removable single bunk sleeper, Cummins IV 385 hp, 9 speed, air ride, 48000# GVW, 16180# chassis wt, 3 stage Jake cold AC 226" wheel base 3 1/2 rears aluminum steers 7524 5 steers 11R22 5 drives, gauge package, cloth & vinyl interior, black in color 6k per gallon
\$9,950



1998 GMC G3500 10 Van 4 3 Gas Automatic 123k miles white AC, rollup rear door step up bumper
\$8,500



1990 International 8100 single axle dav cab, Cummins L10 270 hp, 9 speed spring ride, 86" C to A No AC 450k miles
\$5,500



1996 Freightliner FLD12042ST Single Axle Day cab, Detroit 12 7 400 hp, 490k miles, 10 speed 4 33 rears, 166" wheel base, air ride, Jake brake AC
\$13,500

"Bid on our trucks at!" www.truck-network.com