

Woodcrest Motors

SPECIALIZING IN TRUCKS & VANS
1200 North Reading Rd., (Rt. 272) Stevens, (Lancaster Co.) PA 17578
717-336-3130



**98 DODGE
RAM 1500 SLT**
Club Cab 4 Dr
V8 AT A/C Most
Options 95,000
Miles Green &
Silver \$11,900



**1997 FORD
F150 SUPER
CAB 4X4**
V8 5 Spd A/C,
Most Options
Teal w/Cap
76,000 Miles
\$12,900



**96 CHEV 1500
EXTEND CAB**
Silverado 4x4
3 Dr 5.7 V8 AT,
A/C Most
Options 96,000
Miles Maroon
\$13,500



**98 CHEV S-10
EXTEND CAB**
4x4, LS 3 Dr
4.3 V6 AT A/C
Most Options
89,000 Miles
Black
\$10,900



**99 CHEV 1500
SILVERADO**
4x4 V8 AT A/C
Most Options,
Dk Blue,
85,000 Miles
\$14,500



**96 CHEV 4x4
CHEYENNE**
Ext Cab, 5.7
V8, 5-Spd
A/C T.C.,
Cass., White,
91,000 Miles
\$13,995

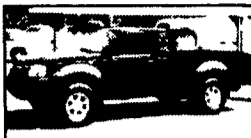


99 Chevy Silverado
1500 4x4 Silver, Auto, 4.8,
V8, Air, Tilt, Cruise, Cass,
Tow Pkg
\$12,900



Auto Sales

Reamstown, PA
717
336-3190



2001 Nissan Frontier Ext,
4x4 Black, 5 Spd, V6, Air,
AM/FM/CD
18,000 Mi
\$15,900



99 Ford Windstar LX, Green,
3.8 V6, Auto, Dual Air, PW,
PDL, Tilt, Cruise, AM/FM/
Cass/CD, Keyless Entry,
46,000 Mi \$13,900



2000 Chevy Astro, Red,
Auto, 4.3, Air, PW, PDL, Tilt,
Cruise, AM/FM/Cass,
32,000 Miles
\$14,900



2001 Chevy Venture LS
Tan, 3.4, Auto, Dual Air,
PW, PDL Tilt, Cruise,
15,200 Mi
\$16,900

RIVER'S TRUCK CENTER, INC.

2975 Cape Horn Road
Red Lion, PA 17356
(717) 244-4903
Your Newest Central PA Sterling & Western Star Dealer



2000 STERLING LT9522
C-15, 13 Speed Airride
17 Alum
Dump Body



1997 FORD L8513
Cummins 8.3L 25 HP
9 speed, 33,000 GVW Air
Brakes, 232" W/B, clean



1984 IHC 1724
392 Gas, 5.82, 33,000 GVW
A/B, PS, Central Hydraulics
10 Plow, 49,000 Miles,
\$7900.00



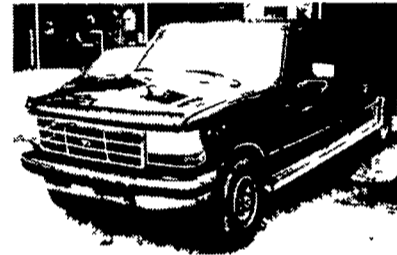
1997 IHC 9300
50" Flat Top Sleeper, C-12
Cat, 10 Speed, Air Ride,
Fleet Maintained
Call For Details

THOMPSON MOTORS INC.

Main Street & Route 412, Springtown, PA 610/346-8588
5 Miles East of Route 78 (Exit 69)
"DIESEL REPAIRABLES"



99 F350 Quad Cab Dually 4x4
34K A/T, XLT, Rear Damage.....\$16,500



96 F250 Xcab 4x4
100K, Minor Front, 5 spd, XLT....\$6,500



97 F350 4x4
100K XLT, 5 Spd 3/4 Nose\$6,500



01 F250 4x2 XL
A/T, 17K Needs Nose\$7,900

Also 96 F350 Crew Cab 4x4, front damage, XLT, stick 100K \$7,500

Call our "FAX ON DEMAND" for current inventory list at 888/755-1041
9-9 Daily 9-8 Saturday



Heil 8700 G 4 Compt.
Aluminum Fuel Tanker
\$4,500



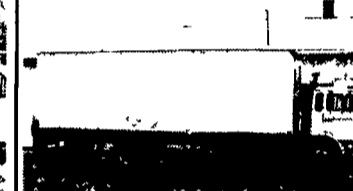
1986 IHC Crewcab
9' Mechanics Truck; DT 466
\$3,500



22' Steel Dump
w/80" Sides
\$2,500



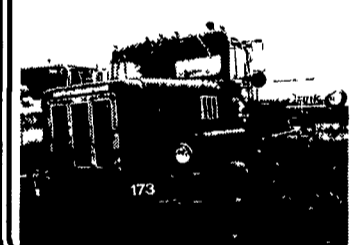
1990 Ford F-700
Cab & Chassis; Ford Diesel; 5
Sp, Air Brakes, GVWR 24,500
\$2,500



1989 Mack MS250
26' Box Van; 5 Sp., Diesel
\$5,500



1984 IHC
Cabover Cab & Chassis;
DT466 Diesel; 5x2 Trans.
\$3,000



**1982 IHC
Paystar 5000**
Cab & Chassis;
Detroit 8V92; 44RA; 18FA;
Double Frame; 8LL
\$3,500

Curry Supply Co.
Curryville, PA
1-800-345-2829
814-793-2829

HOSTETLER

Truck Bodies & Trailers
717-667-3921

Milroy Exit off Rt 322
Between Lewistown & State College



Eby Aluminum Livestock Trailers Bumper
Pull or Gooseneck Torsion Axles All Sizes
and Configurations Available



Standard & Low Profile Dump Trailers Various
Sizes & GVW's Electric Hydraulic Hoist Many
Options & Colors Available



Utility Trailers Single & Tandem Axle Tilts
Ramp Gates Treated Floor With & Without
Brakes Various Lengths & Widths



Pace American Enclosed Cargo Trailers
Single & Tandem Axle Double Doors or
Ramp Doors Side Doors Torsion Axles

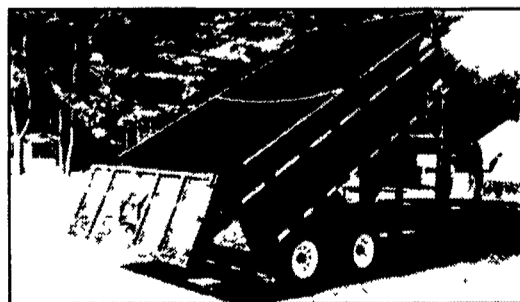


Corn Pro Steel Livestock Trailers, Torsion Axles
Treated Floor, Many Sizes
and Features Available



New From Moritz - "V" Nose Walk Thru 2 Horse
Trailer, Full Padding, Matting w/Ramp Or Step-Up

FEATURE PRODUCT



**Gooseneck Grain
Dump Trailers**
12', 14', 16' & 18'
Available
Call for Prices &
Availability



Moritz Bumper Pull and Gooseneck Livestock
Trailers, Treated Floor Torsion Axles, Electric
Brakes, 6 Different Colors



Toolboxes Steel & Aluminum
Above Body and Under Body
Call for Prices & Sizes



Corn Pro & Moritz
Gooseneck Flatbed Trailers
Any Length Any Weight Available



Contoured and Standard Service Bodies,
All Size Trucks Designed Around Your Needs



Gooseneck Bodies in Steel and Aluminum
Installed or Cash and Carry



Hostetler Silage Body