

Greencastle Livestock

Greencastle, Pa.
Report Supplied By USDA
July 8, 2002

CATTLE 409..(PDA)..supply included 99 steers and heifers, 240 cows, 13 bulls and 57 feeder cattle.

STEERS: High Choice and Prime 2-3 1225-1465 lbs 68.50-70.00, 1515-1590 lbs 65.50-67.00, Choice 1-3 1150-1485 lbs 63.00-67.75, 1505-1690lbs 62.00-63.50 Select 1-2 60.25-64.00, few Standard 1-2 47.50-57.25.

HOLSTEIN STEERS: Choice 2-3 1200-1490 lbs 51.75-57.00, Select 1-2 48.00-53.50, Standard 1-2 44.25-48.00.

HEIFERS: Choice 1-3 1050-1445 lbs 62.75-66.50, few Select 58.75-59.75, Standard 1-2 46.00-55.50

COWS: Breakers 75-80% lean 39.00-44.25, low dressing down to 37.00, Boners 80-85% lean 36.00-43.75, bulk of sales 38.00-42.00, Lean 85-90% lean 34.00-42.50, mostly 36.00-40.00. Shells 33.75 and down.

BULLS: Yield Grade 1 1500-1925 lbs 57.00-63.00, one 2610 lbs at 55.75, Yield Grade 2 1050-1960 lbs 50.00-55.75.

FEEDER CATTLE: STEERS: one Large 3 1045 lbs at 48.00; HEIFERS: Medium and Large 1 230-385 lbs 78.00-90.00, 480-550 lbs 70.00-79.00, 645-725 lbs 63.00-67.00, Medium and Large 2 290-465 lbs 69.00-73.00, one Large 3 holstein 230 lbs 110.00, one 710 lbs 69.00; BULLS: Medium and Large 1 225-425 lbs 84.00-105.00, 700-845 lbs

62.00-75.00, couple 81.00 & 86.00, Medium and Large 2 560-580 lbs 61.00-65.00.

CALVES 601...VEALERS: few Good 130-135 lbs 70.00-85.00, Standard and Good 75-125 lbs 50.00-72.50, Utility 59-90 lbs 20.00-45.00, few down to 10.00.

FARM CALVES: No 1 Holstein bulls 90-125 lbs 120.00-142.50, 80-90 lbs 95.00-110.00, No 2 80-125 lbs 70.00-117.50. No 1 Holstein heifers 85-120 lbs 400.00-570.00 No 2 70-95 lbs 130.00-340.00. Beef cross bulls and heifers 80-120 lbs 120.00-155.00, couple 145 lbs at 114.00.

HOGS 12...SOWS: US 1-3 few 420-485 lbs 15.50-21.50, few 500-560 lbs 17.50-20.00, few Medium 475-540 lbs 8.00-12.00; BOARS: 515-570 lbs 6.00-9.00 **FEEDER PIGS 0...NO MARKET TEST!**

SHEEP 42...SLAUGHTER LAMBS: Choice 45-55 lbs 71.00-78.00, 75-115 lbs 72.00-77.00; **SLAUGHTER SHEEP:** 17.00-30.00

GOATS 135...(All sold by the head with weights estimated). Kids: Selection 1 under 20 lbs 12.50-17.50, 20-40 lbs 21.00-33.00, 40-60 lbs 43.00-59.00. Selection 2 under 20 lbs 8.00-16.00, 20-40 lbs 21.00-26.00, 40-60 lbs 25.00-41.00 Yearlings: Selection 1 40-60 lbs 34.00-59.00 Selection 2 40-60 lbs 32.00-42.00 Nannies: 50-70 lbs 34.00-59.00, 70-100 lbs 62.50-81.00 with a few to 135.00. Billies: one 95 lbs at 92.50, one 110 lbs at 120.00 Wethers: one 70 lbs at 64.00

Leesport Livestock Auction

Leesport, Pa.
July 10, 2002
Report Supplied By USDA

CATTLE 278...(PDA)..(Supply included 93 steers & heifers, 114 cows, 23 bulls and 48 feeder cattle)...

STEERS: Choice 1-3 1135-1435 lbs 64.00-67.75, couple Select 1-2 58.00 & 60.00.

HOLSTEIN STEERS: Choice 2-3 1200-1685 lbs 53.00-55.75, Select 1-2 50.00-53.25, Standard 1-2 48.50-50.25.

HEIFERS: Choice 1-3 1060-1275 lbs 62.25-64.50, couple Select 1-2 54.75 & 58.25.

COWS: Breakers 75-80% lean 40.25-45.50, one at 47.75, Boners 80-85% lean 37.50-40.50, Lean 85-90% lean 36.00-39.00. Shells 36.00 and down.

BULLS: Yield Grade 1 1155-2045 lbs 54.00-58.50, Yield Grade 2 995-1655 lbs 48.00-53.00.

FEEDER CATTLE: STEERS: one Medium 2 295 lbs at 34.00, Large 3 349-698 lbs 50.00-54.00, few 705-1135 47.75-49.00; HEIFERS: Medium 2 275-390 lbs 73.00-95.00, one 585 lbs at 57.50; BULLS: one Medium 2 200 lbs 62.50, one Large 1 595 lbs 52.50, Large 3 675-861 lbs 41.00-46.00.

CALVES 219...VEALERS: Standard and Good 75-125 lbs 45.00-67.50, Utility 55-110 lbs 10.00-42.50. **FARM CALVES...:** No 1 Holstein bulls 95-130 lbs 90.00-120.00, mostly 100.00-115.00, No 2 80-130 lbs 70.00-105.00; No 1 Holstein heifers 85-110 lbs 300.00-340.00, No 2 70-110 lbs 110.00-260.00, smaller calves down to 95.00.

Beef type bulls and heifers 65-105 lbs 50.00-135.00.

HOGS 55...Barrows and gilts steady. BARROWS AND GILTS: 45-50% lean 178-293 lbs 20.00-36.25, 40-45% lean 352 lbs 19.50.

SOWS: 1-3 295-495 lbs 11.00-16.50, 1-3 510-605 lbs 14.50-19.00, one Medium 530 lbs at 3.00.

FEEDER PIGS 71... 1-3 34-36 lbs 20.00-100.00, 71 lbs 62.50. — per cwt.

SHEEP 22... SLAUGHTER LAMBS: couple Choice 30 & 45 lbs 80.00 & 85.00, 70-110 lbs 65.00-78.00. **SLAUGHTER SHEEP:** 8.00-34.00, couple Yearlings 52.00 & 82.50.

GOATS 14...(All sold by the head with weights estimated). Kids: Selection 2 few 40 lbs 37.50. Nannies: one 55-60 lbs 19.00-40.00.

Belleville Livestock Auction

Belleville, Pa.
July 10, 2002
Report Supplied By USDA

CATTLE 357...(PDA)..(Supply included 226 cows and heifers in the Dairy sale)...

STEERS: one Select 1-2 58.50.

COWS: Breakers 75-80% lean 36.50-42.75, Boners 80-85% lean 35.50-40.75, Lean 85-90% lean 33.00-40.25. Shells 32.50 and down

BULLS: couple Yield Grade 1 1820 & 1995 lbs 53.25 & 58.50, couple Yield Grade 2 960 & 1360 lbs 40.00 & 49.25.

FEEDER CATTLE: STEERS: one Medium 2 460 lbs at 52.00, few Large 3 815-865 lbs 51.50-52.50; HEIFERS: one Large 3 holstein 490 lbs at 49.00.

CALVES 85...VEALERS: Standard and Good 70-110 lbs 40.00-47.50, Utility 65-110 lbs 17.50-40.00. **FARM CALVES...:** No 1 Holstein bulls 90-120 lbs 70.00-112.50, mostly 77.50-97.50, No 2 80-120 lbs 50.00-75.00; few No 1 Holstein heifers 90-120 lbs 340.00-450.00, No 2 Holstein heifers 75-110 lbs 110.00-210.00. Beef type bulls and heifers one 80 lbs at 100.00

HOGS 2...BARROWS AND GILTS: couple 45-50% lean 240 & 265 lbs 25.00 & 33.00.

FEEDER PIGS 18...1-3 35-45 lbs 20.00-35.00, few 50-65 lbs 40.00-50.00. — per head.

SHEEP 35...SLAUGHTER LAMBS: Choice 40-55 lbs 71.00-101.00, 65-85 lbs 50.00-71.00, one at 86.00, 90-115 lbs 50.00. **SLAUGHTER SHEEP:** 17.00-43.00, with a few up to 48.00.

GOATS 26...(All sold by the head with weights estimated). Kids: Selection 1 20-40 lbs 43.00-60.00, 40-60 lbs 37.00-50.00. Selection 2 20-40 lbs 32.00-59.00. Selection 3 20-40 lbs 32.00-51.00. Yearlings: Selection 2 40-60 lbs 35.00-44.00. Nannies: 50-70 lbs 52.50-60.00. Billies: one 100 lbs at 70.00.

DAIRY COWS: 750.00-1700.00. — per head.

Middleburg Livestock Auction

Middleburg, Pa.
Tuesday, July 9, 2002
Report Supplied By USDA

CATTLE 347...(PDA)..(Supply included 104 steers and heifers, 144 cows, 14 bulls and 85 feeder cattle.

STEERS: few High Choice and Prime 2-3 1195-1360 lbs 68.00-69.50, Choice 2-3 1100-1445 lbs 64.00-68.25, Select 1-3 60.00-64.25, Standard 1-2 55.25-60.00

HOLSTEIN STEERS: Choice 2-3 1100-1660 lbs 52.50-57.00, Select 1-2 48.50-52.00, few Standard 1-2 47.00-48.50.

HEIFERS: few Choice 1-3 1075-1285 lbs 63.50-66.00, few Select 1-2 60.00-62.25, few Standard 1-2 49.50-56.50.

COWS: Breakers 75-80% lean 40.00-45.00, Boners 80-85% lean 37.75-42.50, low dressing down to 35.00, Lean 85-90% lean 34.00-40.75, Shells 33.75 and down.

BULLS: Yield Grade 1 1045-1700 lbs 55.00-56.00, fancy to 63.25, Yield Grade 2 910-1920 lbs 44.50-52.75.

FEEDER CATTLE: STEERS: Medium and Large 2 685-710 lbs 57.00-61.50, Large 3 Holsteins 370-390 lbs 60.00, 755-955 lbs 35.00-47.50; HEIFERS: Medium & Large 2 550-680 lbs 57.00-60.50, 740-760 lbs 54.00-59.00, Medium & Large 3 370-510 lbs 52.00-57.00, one Large 3 Holstein 435 lbs 68.00; BULLS: Medium & Large 2 560-575 lbs 49.00-57.50, 700-775 lbs 50.00-55.00, Medium & Large 3 500-650 lbs 41.00-47.00, 650-950 lbs 47.00-49.50.

CALVES 338...VEALERS: Standard and Good 80-120 lbs 40.00-50.00, Utility 55-115 lbs 20.00-35.00, few to 10.00. **FARM CALVES:** No 1 Holstein bulls 90-120 lbs 110.00-140.00, mostly 120.00-140.00, 80-85 lbs 90.00-100.00, No 2 80-125 lbs 70.00-105.00, weaker calves down to 55.00; No 1 Holstein heifers 90-115 lbs 410.00-550.00, No 2 70-110 lbs 155.00-370.00.

One beef type bull 80 lbs 95.00

HOGS 69...BARROWS AND GILTS: 45-50% lean 235-295 lbs 34.25-37.50, 40-45% lean 270-350 lbs 26.00-34.00.

SOWS: 1-3 325-485 lbs 12.00-18.75, 520-560 lbs 18.00-19.75, Medium 390-410 lbs 7.50-8.00.

BOARS: 415-565 lbs 9.00-10.75.

FEEDER PIGS 12...1-3 35-45 lbs 29.00-35.00 - per hd.

SHEEP 34...SLAUGHTER LAMBS: few High Choice & Prime 60-85 lbs 70.00-75.00, Choice 40-45 lbs 90.00-100.00, 50-60 lbs 60.00-70.00, Choice 80-130 lbs 50.00-67.00.

SLAUGHTER SHEEP: few 00.00-35.00.

GOATS 41...(All goats sold by the head with weights estimated). Kids: Selection 1 20-35 lbs 15.00-17.00, 35-45 lbs 40.00. Selection 2 under 20 lbs 20.00-27.00, 20-40 lbs 17.00-45.00, 40-60 lbs 30.00-52.00. Selection 3 20-40 lbs 21.00 Yearlings: Selection 1 40-60 lbs 45.00-50.00, Selection 2 40-60 lbs 35.00-40.00. Nannies: one 55 lbs 45.00, 70-100 lbs 62.00-77.00. Billies: couple 60-95 lbs 50.00 & 92.00.

Lebanon Valley Livestock

Fredericksburg, Pa.
Report Supplied By USDA
July 9, 2002

CATTLE 98...(PDA)..Compared with last week's sale...cows 1.50 to 1.75 lower.

STEERS: Choice 1285-1620 lbs 60.00-65.00, Select 1-2 52.50-58.75.

HOLSTEIN STEERS: Select 1-2 51.00-53.75, couple Standard 43.75-45.50.

HEIFERS: Choice 2-3 1090-1265 lbs 63.00-64.25, Select 1-2 50.50-56.50.

COWS: Breakers 75-80% lean 38.75-41.75, Boners 80-85% lean 38.25-40.00, Lean 85-90% lean 35.00-38.25. Shells 33.75 and down.

BULLS: Yield Grade 2 1135-1205 lbs 52.00-52.25.

FEEDER CATTLE: HEIFERS: one Medium 2 595 lbs 50.50, few Large 3 485-815 lbs 50.00-56.00; BULLS: Large 3 475-490 lbs 40.00-52.00.

CALVES 191...VEALERS: Standard and Good 80-110 lbs 45.00-77.00, Utility 55-105 lbs 10.00-40.00.

FARM CALVES: Holstein bulls mostly 5.00 to 15.00 lower, Holstein heifers Sold weak on light supply of quality calves. No 1 Holstein bulls 95-120 lbs 100.00-135.00, No 2 90-120 lbs 80.00-112.00, 85 lbs 72.00-82.00; No 1 Holstein heifers 90-100 lbs 300.00, No 2 70-125 lbs 90.00-140.00. Weaker calves to 65.00.

Couple beef cross bulls and heifers 70 & 80 lbs 40.00.

HOGS 14...45-50% lean 191 lbs 27.00.

SOWS: 1-3 480 lbs 16.00, 655-665 lbs 18.00-19.00, one 880 lbs 16.50, one Medium sow 540 lbs 10.00.

BOARS: one 710 lbs 10.00.

FEEDER PIGS 0...NO MARKET TEST.

SHEEP 0...NO MARKET TEST!

GOATS 0...NO MARKET TEST!

Dewart Livestock

Dewart, Pa.
Report Supplied By Auction
Monday, July 8, 2002

STEERS: TOO FEW TO QUOTE.

HEIFERS: TOO FEW TO QUOTE.

GOOD COWS: 30.00-40.00.

CANNERS AND CUTTERS: 20.00-30.00.

BULLS: 1 AT 53.25.

VEAL: 90-190 LBS. 100.00-550.00; 70-90 LBS. 50.00-100.00

HOGS: 35.00-37.25.

SOWS: 18.00-20.75

FEEDER PIGS: 15.00-28.00 HEAD

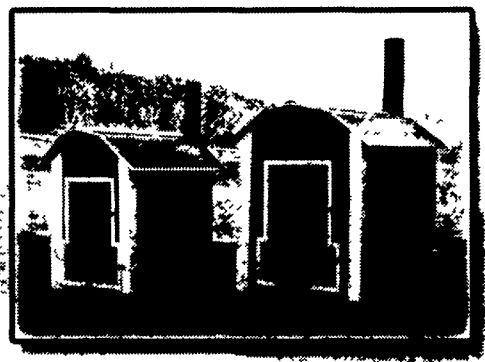
LIVESTOCK FUTURES MARKET

Chicago Mercantile Exchange
 Wednesday, July 10, 2002

| | Choice Steers Today 07/03/02 | Choice Feeders Today 07/03/02 | Live Hogs Lean Value Today 07/03/02 | Frozen Pork Bellies Today 7/03/02 |
|-------|---------------------------------|----------------------------------|---|---|
| Jl 02 | | | 53 875 52 975 | 76 900 71 675 |
| Au 02 | 63.850 64 475 | 76 425 76.725 | 50 850 49 350 | 72 775 68 915 |
| S 02 | | 76.900 76 975 | | |
| O 02 | 66.500 66 600 | 76 700 76.875 | 42 600 41.150 | |
| N 02 | | 77 100 77 250 | | |
| D 02 | 67 525 67.675 | | 39 300 38.700 | |
| J 02 | | 76 450 76.750 | | |
| F 03 | 68.800 68 750 | | 42 250 42.650 | 64 500 64 325 |
| Mr 03 | | 75.500 75 750 | | 62 500 61 500 |
| Ap 03 | 69 425 69.825 | 74.700 75.750 | 45 150 45.800 | |
| My 03 | | 75 750 75 750 | 52 700 52.150 | 61.500 61 500 |
| Jn 03 | 65 200 65.800 | | 55.100 55.600 | |
| Jl 03 | | | 55.200 55.200 | |
| Au 03 | 66.300 66 450 | | | |



- Heat with wood and avoid expensive fuels
- Efficiently heat your home, domestic hot water, barn, or shop - all with one stove
- Heavy Duty design
- Wide range of sizes (up to 1.3 million BTU ratings)
- Slide-out ash pan provides for convenient ash removal and prevents excessive corrosion
- Enjoy the convenience and safety of an outdoor stove



Oak Tree Stove Sales
 James Sensenig
 632 Elysburg Road, Danville, PA 17821
 Phone: (570) 672-1096
 Fax (570) 672-3221

H. James Siegrist
 Pittsgrive, NJ
 (856) 692-2227

Stonebridge Sales
 New Creek, WV
 (304) 749-8483

Schuylkill Welding
 Tamaqua, PA
 (570) 386-1177

Ed Jones
 Mechanicsburg, PA
 (717) 766-0426

Joe Hurst
 Plymouth, OH
 (419) 687-5801

Brighams
 Laceyville, PA
 (570) 869-3029

Incredible Prices !!!

UP TO 60% OFF
SUPER HEAVY STEEL
 ■ Equipment Storage!
 ■ Workshops!



FAST AND SIMPLE TO ERECT!! NO CRANE NEEDED!!

AVAILABLE MODELS
 30 x 50 (2 LEFT) 40 x 64 (3 LEFT)
 45 x 80 (2 LEFT) 52 x 100 (1 LEFT)
 55 x 120 (2 LEFT)

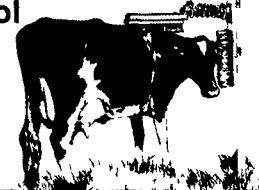


800/825-5059

EXCELLENT FOR HAY AND GRAIN STORAGE

CATTLE SCRATCHER

Apply oil-based fly and pest control
 And provide comfortable brushing action to the animal.
 Remove lice, flies, winter hair



We Ship Parts Daily UPS • 24 Hour Service • On The Farm Route Service



FISHER & THOMPSON
 INCORPORATED

DAIRY & MILKING EQUIPMENT SALES & SERVICE

MAIN OFFICE
 15 Newport Rd., Leola, PA 17540 • 717-656-3307