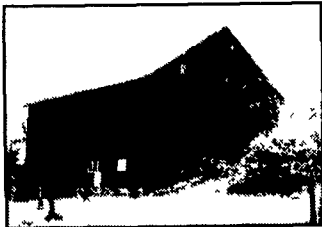


CENTRAL VIRGINIA: Farms and land available from 5 to 500 acres, reasonable prices, very low taxes, farmer friendly communities, agricultural economy.

State Wide Realty Co.
Farmville, Virginia
434-392-6163
www.vastatewiderealty.com

FOR RENT
Farm House
Nice Country
Setting, Not Far
Off Main Highway,
Leola/New
Holland area
5 bedrooms, big
kitchen, basement
Barn & Pasture
Also Available
717-355-2361

Country Paradise!!



BEAUTIFUL SMALL COUNTRY TOWN OF TYLERSVILLE!!

4,000 Sq. Ft. Home Completely Remodeled Within Last 10 Years!!
\$139,900 on 1.171 Acres
\$154,900 with Barn
\$179,900 with Adjacent 1.013 Acres

Private Access To Fishing Creek!!
Named One Of The Top 25 Best Fishing Streams By Field & Stream Magazine!!
Ranked A Class A Wilderness Trout Stream!!
Also Available
3 1/2 Acres \$44,900
Creek Frontage!

STERN REAL ESTATE
7930 Nittany Valley Drive
Mill Hall, PA 17751
(570) 726-6388
www.palandforsale.com
Broker Owned & Brokers Protected

New Listing in Dauphin Co. PA



★ 106 acre general farm with 70-75 acres tillable, 15 acs pasture, 16 acs woodland, 47'x85' bank barn with 10 horse stalls, 24'x42' corn barn, 2 1/2 story farm dwelling 6BR's, 2 1/2 baths sunroom, 2 fireplaces, patio
\$595,000 ask for Gene

★ 54 Acre 37 tillable acres with brick house and bank barn, would make good horse farm **Asking \$338,000.**

When You Need A Farm Salesman Call Gene



COLDWELL BANKER

HOMESALE SERVICES GROUP

1255 S Market St., Elizabethtown, PA 17022
717-361-HOME 717-665-HOME

Gene Kreider, Realtor 717-367-1112 (Fax) 1-800-850-1069 (PA Only)
717-898-2345 or 717-653-2646 717-367-3500 or 717-653-6600



DEMEREER REALTY

171 N. Gardiner Rd.
Little Falls, NY 13365
Phone (315) 823-0288
George Demeree, Broker



demereerealty.com

#53-A - Lg grain or dairy farm w/900 acres - 600 tillable - 400x38 ft barn w/160 ties on 2" pipeline - also rm for 50 calves - free stall barn for 45 head - tie stall barn for 50 heifers - 4 lg mach sheds - corn dryer & corn storage unit - 9 silos - 2 springs, 4 creeks & 4 ponds - Good 10 rm home & 2 house trailers - **\$1,000,000.**

#31-A - Dairy farm w/227 A has 135 tillable & 85 pasture - lg 2 story barn w/71 cows on 2" pipeline - 1250 gal B T - heifers & calves housed in main dairy barn - 2 lg mach sheds & 3 silos w/unloaders - good 7 B R 2 fam home - well & 2 ponds - all bldgs in good condition - **\$274,900 - REDUCED TO \$164,900.**

B-206 - Dairy farm w/550 A - 350 tillable - nice 150 cow tie stall barn built in '82 - also free stall barn for 150 head - 2000 gal B T - 4 silos - 2 homes - 1 apartment - **ONE OF THE BEST FARMS AROUND! \$560,000.**

H-201 - Dairy/Hobby farm w/201 A w/57 tillable & 135 pasture - 120x36 ft 2 story barn w/44 tie stalls on 2" pipeline, addition for 25 heifers, 500 gal B T, 2 stall garage & 6 yr old ranch home - **\$160,000.**

W-104 - HISTORICAL STAGECOACH INN with unique Round Barn that has been published in many journals with 100 acres of land bordering the Chenango River This picturesque property lends itself to a variety of opportunities (horse/hobby farm, bed & breakfast, restaurant, art gallery, etc), or just a beautiful rare history filled home - **\$395,000.**

#809 - 482 A dairy farm w/300 tillable - lg free stall barn for 140 head, 2 story barn w/64 stalls, 160x43' one story barn, also dry cow barn, lg parlor & holding area, 120x24' covered feeder w/concrete floor, 3 mos manure lagoon, 4 bay comm shed, 2 lg mach sheds, horse barn & shop - also 3 lg silos w/unloaders, 400 ton grain drying bin & 19 rm 2 fam home, lg 3 B R ranch plus two 2 B R apartments - also featuring 100x230' lighted horse arena & stands - **\$850,000.**

Large Hunting Lodge & Retreat

2.225 Acres Located in Clearfield Co., PA, just 50 min from Penn State Univ & 5 mi from two exits on Interstate 80 Price includes hunting lodge two log cabins, bunkhouse, stable, two tractor sheds, and fully furnished ranch house, as well as a large barn and two lovely ponds. The property is perfect for hunting clubs or corporate outings. All buildings are in an exceptional state of repair \$3.2 million. Acreage can be expanded up to 5,200 acres.

Contact our website for pictures at: **www.curtinrealestate.net**, telephone **814-355-2324** or **Dave Nelson** at telephone **814-857-7681 ext. 305**

Koch Homestead Realty

91 Princeton St Wellsboro, PA 570-724-3500 | 9 North Main St Mansfield, PA 570-662-3287 | 403 E Main St Elkland, PA 16920 814-258-7117

W524 - An Extraordinary Post & Beam Mountain Retreat nestled in the hills of Northern PA. All that you could wish for, from an outdoor hot tub to an all inclusive high tech sound center. Enjoy cooking in your gourmet kitchen as the flames in your grand, stone fireplace entertain you. Master bath w/Jacuzzi tub and wlk in closet & 16 x 13 loft. Den w/tile floors and wood burning stove. A Great room with stone fireplace is a combination of kitchen and living room overlooking Deck. All this on 20 acres for just **\$319,900. #111025**

W515 - Prime commercial building in the heart of Wellsboro. Retail spaces, offices and apartments. Location has maximum exposure to public and shows positive flow for investment purposes. Call today for details! **\$450,000. #110939**

M142 - LARGE, level building lot in an attractive residential area. This lot is in town with an out of town feel. Boro restrictions apply **\$22,000 #111442**

E252 - Balanced blend of pasture, tillable and wooded with this hillside farm. Includes older farmhouse with some exterior updates, bank barn, fencing, paved road frontage. Varied use as beef/horse/hobby farm **\$149,000. #110805**

Century 21 Wilkinson-Dunn Co.
78 Main Street, Wellsboro, PA 16901
(570) 724-5921
EMAIL: wkldunn@aol.com
INTERNET: www.century21.com

TIOGA COUNTY
W-1920 Beautifully remodeled and well maintained 3 generation family farm house. New roofing, siding, windows, electrical and heating systems. Out of town yet close to conveniences. Walk to schools, full walk out basement for workshop. Taxes and lot size estimated pending subdivision. Additional adjacent lots with small house and barn available. **Westfield \$149,900.**

W-1925 Extraordinary ranch home in Nelson. Beautiful family room with fireplace. 3 bedrooms, 1 3/4 baths, 2 car garage with paved drive, nicely maintained and landscaped. **\$105,000.**

W-1926 Charming home shows pride in ownership. Updated and maintained, 4 bedrooms, 3 car garage, lot 1.11 acres with nice stream. Garage large enough for small business. Middlebury Center **\$79,900.**

W-1924 Salt Box design accentuates this post and beam on 6.97 country acres. Some features include 4 bedrooms, 3 baths, family room, wood flooring, ceramic tile floors, den, loft area and 2 car garage. Delmar Township **\$255,000.**

W-1921 Building lot 1.07 acres with public sewer and public water plus 26x72 barn in good condition. **Westfield \$19,500.**

W-1780 Views to take your breath away. Executive raised ranch home with new custom built master bedroom suite. Brick fireplace and decorative wood ceiling beams enhance the open floor plan. Full basement with wet bar/kitchenette and rec room. 2 car attached and 2 car detached garages. All on 4.45 acres. Charleston Township **Reduced \$242,900.**

Lancaster County Properties

- **New on Market** - 6500 sq ft building - remodeled with many uses on 3.8 ac open land in Quarryville. Call for information and possible uses.
- **New** - Farmhouse, barn, other out buildings on 9 ac of land. Providence township. Have animals on property. Grow your vegetables on site. Do not miss this one.
- **Your Chance to own Colerain Township** farmland 47 ac of prime land 50% farmland, 50% wooded. Located close to Quarryville, great location.
- **Stone Farm House** - 5000 sq ft living space, remodeled central heat and air. Acreage, private, Fulton Twp. Make a great home or getaway resort for someone. Call for details.
- **4 acre wooded building lot** - near Octorara Lake, great location, Little Britian Twp.

Call Ken or Phil For Details
Direct line to Phil 717-940-5964 Ken 717-940-9025



Call Ken Rutt - a life long farmer and real estate investor who can assist you in any sale or purchase of real estate. Creative tax and financial arrangements, low farm mortgage rates. Serving Southeast PA. **The Best Can Often Cost Less**

Office 717-786-1300 Cell Phone 940-9025

COLDWELL BANKER HOMESALE SERVICES GROUP
P.O. Box 306, Quarryville, PA 17566
E-Mail: RuttK@EPIX.net



HALIFAX - 73+/- ac farm w/totally remodeled log house, new hardwood floors & ceramic floors. Great country location, new septic. A must see. **Priced at \$395,000.**



HERNDON - Totally redone Cape Cod on 6.95 ac's - great view, good hunting, mostly wooded, deck off MBR, wrap around porch, new roof & siding. Outbuildings, 2-story chicken barn. Optional owner financing. A must see property! **Reduced \$99,900**

Century 21 Carl Snyder
717/896-8808, 717/979-8042
www.century21snyder.com

ENDLESS MOUNTAIN REAL ESTATE CO.

US Rt. 15, Covington, PA 16917 (570) 659-5684
TIOGA & BRADFORD COUNTIES

Tioga County Recreational lake nearby this attractive ranch style home setting on 0.57+/- acres, 1568 sq ft of living. 3 BR 2 baths. Master BR has French doors leading to Master Bath w/garden tub, separate shower unit, double closets, & dressing area. Oak cabinets, extra large L R, held-stone fireplace, private setting **\$69,900 (#974)**

Tioga County Cozy ranch home bordering minimally traveled street. 3 BR 1 1/2 baths, NG/FHA heat, full bsmt w/laundry area, woodstove hookup available. public water private septic system 0.34+/- acre State Lands close by **\$69,900 (#975)**

Tioga County Nice level lot just waiting for your sin glewide doublewide, modular, or custom-built home, 0.48+/- w/existing well, septic, electric, NG, & very nice 2 car garage **\$34,900 (#979)**

Tioga County Pleasant country setting, yet only 2 miles to downtown for this large ranch home nestled in the Pines log siding, over 3100 sq ft of living, 4 BR 2 3/4 baths, Master BR features fireplace w/gas log insert & well-equipped bath w/sunken whirlpool tub & separate shower unit w/built-in steamer, cathedral ceilings throughout, over sized 2 car att garage w/ceramic tiled floor, det workshop/garage has separate utilities & room for 6 cars, 7+/- acres, pond, professional landscaping, must see to appreciate! **\$379,400 (#981)**

www.endlessmtnrealestate.com E-mail: end@epix.net

NORTH MOUNTAIN AREA - Approx. 4-1/2 partially wooded Acres close to state land, great location for cabin or dream house, perced, **\$47,500.**

NEWBURG RD. (Lurgan Twp.) - Beautiful 2-Story Farmhouse on 18 Acres (2 tracts) of privacy, home features 4 bedrooms, modern country kitchen, hot water heat (fired by oil, wood or coal), lg. barn, outbuildings, & garage, absolute move-in condition, only **\$244,900.**

SHIPPENSBURG AREA - Approx. 3 Acres with a crisp & clean Brick Rancher that offers 3 bedrooms, country kitchen, formal dining room & more, PLUS small barn w/elec. and garage, property has been well cared for, no current twp zoning, **\$149,900.**

SHIPPENSBURG AREA - Roomy Cape Cod on approx 2 Acres, features 3 or 4 bedrooms, kitchen w/appliances, huge living room (28x12), hot water heat, full basement & lots of updates, private location, **\$127,600.**

ROWE RUN ROAD - Commercial-type Building w/approx. 5700 S.F. situated on 3 Acres, endless possibilities, no current twp. zoning, loading dock, office, warehouse, **\$200,000.**

DEVELOPMENT POTENTIAL (Shippensburg Boro) - Approx. 13 Acres of PRIME residential property waiting to be developed, utilities near, call for details, **\$189,000 NEW LISTING**

SHIPPENSBURG RD. - 40(+) ACRES with large barn & road frontage, land is perced for on-lot septic, priced to sell, only **\$148,900.**

Don't see what you're looking for, Call Us, We Have Many Others.

SAILHAMER REAL ESTATE, INC.
Shippensburg, PA 17257
717/532-6059