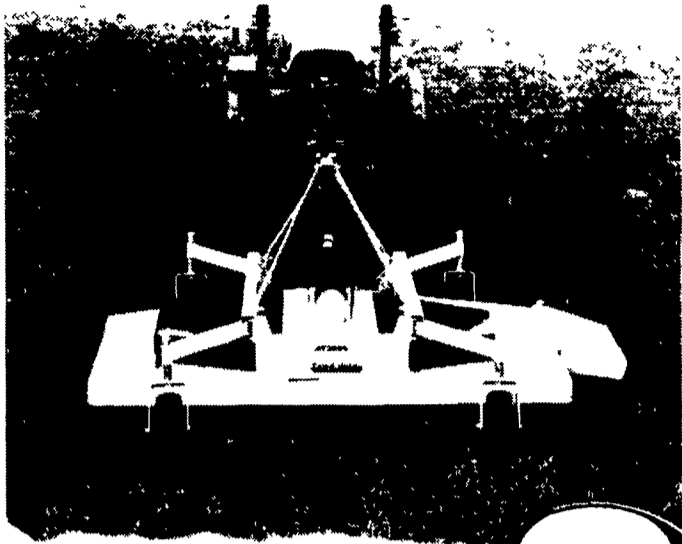


Land Pride

A Division of Great Plains Mfg., Inc.



FOR A SUPER FINISH START WITH LANDPRIDE

Featuring more blade overlap, larger wheels, heavier spindles and thicker blades, the AT3590 is built for many years of productive commercial use

The best Air Tunnel Grooming Mower available.

Pennsylvania

Dev. Field Ag & Turf Center Inc
RR 2 Box 212
Watsonstown PA 17777
570-538-3557

Detlan Equipment Inc
141 East Main St
Silverdale, PA 18962
215-257-5177

Donatelli Dunlap
Rt 220 Main St Exit
Jersey Shore PA 17740
570-398-1391

Eckroth Bros
Farm Equip
Rd 2 Box 24A
New Ringgold PA 17960
570-943-2131

Eckroth Equipment Co
4910 Kernsville Rd
Orefield PA 18069
610-366-2095

Hines Equipment
RT 220 Belwood, PA
814-742-8171

Keller Brothers
R7 Box 405
Lebanon PA 17042
717-949-6501
and
1950 Fruitville Pike
Lancaster, PA 17601
717-569-2500

Lehigh Ag Equipment Inc
6670 Rupperville Rd
Allentown, PA 18106
610-398-2553
800-779-3616

M S Yorsley & Sons
West Chester, PA
610-696-2990

Pikeville Equipment Inc
RD 2 Oysterdale Road
Oley PA 19547
610-927-6277

Stoltzfus Farm Service
Cochranville, PA
610-593-2407

Stouffer Bros Inc
1066 Lincoln Way West
Chambersburg PA 17201
717-263-8424

Valley Ag Turf
817 Tobias Road
Halifax, PA 17032
717-362-3132

New Jersey

Radio Tractor Sales
North White Horse Pike
Hammonon NJ 08037
609-561-0141

Warren County Service Center
228 Route 94,
Blairtown, N J
908-362-6916

21 SERVICES OFFERED



Custom Hauling
• 40' Open Flatbed
Farm Equipment Hay
Hot Tubs Cars
• 5th Wheel & Gooseneck
Towing Service
Camping Trailers Boats
Horse Trailers
• Pick-Up Truck Service

Todd "Bozz" Bostdorf
Call 717-230-8183 for rates and availability

1A CONSTRUCTION EQUIPMENT

1997 IHI Mini Excavator

Rubber Tracks, Blade, Side Swing & Rotating Hoe, \$9,500

814-398-2085

- 1979 Tandem Ford LN8000 w/18' alum. dump bed, new hoist, \$6,000.
 - 544A JD ldr, artic w/fork, clamps and mulch bucket, recently overhauled, \$16,500
 - 920 Cat ldr artic w/forks & clamp w/mulch bucket, VV good shape, \$18,500.
 - 16' wooden hay wagon, 6 ton, \$750.
 - 1994 JD 5200 series, canopy, lights & controls, 700 hrs, like new, \$15,500
 - 1986 Monitor 27' travel trailer, A/C, stove, new refrig, loaded, ready to live in, \$6,200.
- Call before 9 30 am or after 3 30 pm or lv mess (717) 582-0198

Park Pumps & Controls, Inc.

950 Mt. Holly Road/Edgewater Park, NJ 08010
Phone: (609) 871-0944 Fax # (609) 871-2987

USED PUMPS

	PRICE
3" Gorman-Rupp 6 H P 230 Volts Electric	\$ 300.00
4" Gorman-Rupp Trash 3" Solids 21 H.P. - 3 Cly Lombardi	\$6,500.00
4" Gorman-Rupp Trash 1 1/2" Solids 28 H P - 4 Cly Lombardi	\$7,500.00
4" Carter Diaphragm 8 H P Lombardi	\$2,950.00
3" Barnes Diaphragm 3 5 Honda	\$ 750.00

USED & NEW PARTS PRICED RIGHT

DISMANTLING

Cat	IHC	Gallon
Case	Michigan	Wabco
John Deere	Hough	Dynahoa
Trojan	Terex	Koehring
Drott	Hein Werner & Others	AC/Fiat Allis

Dismantling Over 650 Machines For Parts

NATIONWIDE PARTS LOCATING SERVICE
In addition to our own large inventory, we have two computerized parts locator services, nationwide & Canada, ready to serve you in less than a minute, over 600 used & new parts & equipment suppliers will receive your parts request. Parts are located easily & at substantial savings.

Try Our Services

Save \$\$\$ Parts Shipped Anywhere Direct To You.

All Parts Guaranteed.

"We Return All Phone Calls"

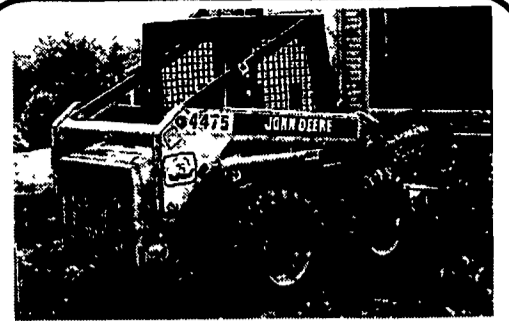
BALANDA EQUIPMENT, INC.

P O Box 407 • Route 29 • Palm, PA 18070

Phone 215-679-3900 • Fax 215-679-8727

TOLL FREE: 1-800-322-8030

1A CONSTRUCTION EQUIPMENT



'98 John Deere 4475

\$8,500

717/442-9328



JD 450C with Loader, 4 Way Bucket, Block Heater, Nice Condition
\$11,500 • 610-273-2134

Lanc. Co.

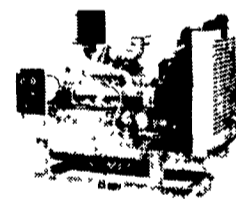
717-336-3190 or
717-336-7345

JD 1010 Crawler Loader,
Diesel w/Backhoe.....\$7,900

Diesel Engine Service

13 Pleasant Valley Road • Ephrata, PA 17522
PHONE: 717-733-3890 • FAX: 717-738-3146

JOHN DEERE & DETROIT DIESEL



• Engines • Power Units • Generator Sets • Complete Rebuilding • Parts & Service • Rockford & Twin Disc Clutches & Parts • New JD Powertech Engines 20-500 HP

• 70 HP 353DD Power Unit, Used, w/Hood	\$3,000
• 100 HP 453DD Power Unit, Used	\$2,850
• 110 HP 4276T JD Power Unit, Used	\$4,500
• 300 HP 11 1, Series 60 DD Power Unit	\$8,500
• 140 KW, 3 Phase Gen Set, 671T DD	\$13,500
• 250 KW, 3 Phase Gen Set, 6V92TA DD, Portable	\$22,500
• 355 KW, 3 Phase Gen Set, V12 Cummins,	\$16,000

BUYING & SELLING USED CONSTRUCTION EQUIPMENT, NEW & USED PARTS & ATTACHMENTS CALL

H.E.L.P., INC.
(717) 469-0039
FAX (717) 469-7679

Specializing In Caterpillar Parts also available for Case, Fiat, IHC, Komatsu, Deere, Etc.

ALL PARTS AT DISCOUNT PRICES!
PARTS LOCATING SERVICES

Call Us For Your Parts & Service Manual Needs

HEAVY EQUIPMENT LOADER PARTS, INC.
10070 Allentown Blvd., Grantville, PA 17028

1A CONSTRUCTION EQUIPMENT

Cat D9G dozer, cab, ripper, \$18,500, nice

R50 Euclid, \$24,000, nice

Int 350 payhauler, 4x4, \$20,000, nice

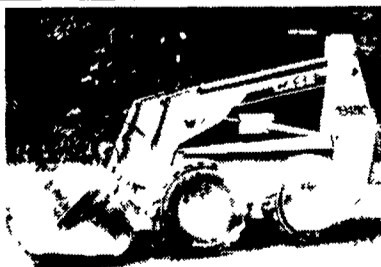
(814) 267-5108

1999 NH LX885

Skid Steer Loader, Very Nice,

\$16,500

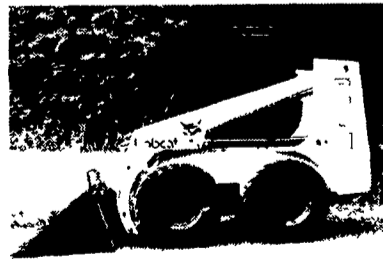
814-398-2085



1996 1845C Case Skidloader

1600 hrs., new rubber

\$12,900



1993 853 H Bobcat Skidsteer

Good Cond., Aux Hyd., 2000 hrs,

\$10,500

• Brand New 73" Dirt buckets.....\$575

• Brand New Pallet Forks.....\$575

717 • 629 • 2660



Cat 941/951 CRL Loader
8 Crawler Loaders To Choose From
Sale Or Rent

Heavy Equipment Loader Parts, Inc.

10070 Allentown Blvd, Grantville, PA 17028

No Sunday Calls (717) 469-0039