

Pennsylvania Junior Hereford Association Preview Show Results



Liz Hitz, Littletown, with a medium weight entry, took home champion steer honors.



Donald Sunday, Dover, with his medium weight entry, won reserve champion steer placing.

MANHEIM (Lancaster Co.) — Junior Hereford Association members from Pennsylvania exhibited 29 head of cattle at the PJHA Preview Show, conducted May 18 at the Manheim Farm Show Grounds. Cliff Orley, Lebanon, evaluated the quality set of cattle. Following is a list of winners:

SHOW WINNERS

Grand and senior champion heifer: Katie Shultz.
 Reserve grand and reserve senior champion heifer: Margeaux Firestone.
 Grand champion and bred-and-owned and reserve champion junior heifer: Margeaux Firestone.
 Champion cow-calf pair: Donald Sunday.
 Champion steer: Liz Hitz.
 Reserve champion steer: Donald Sunday.
 Grand champion bred-and-owned bull: Liz Hitz.

OTHER DIVISION WINNERS

Calf champion heifer: Can Turner.
 Reserve calf champion heifer: Chns Hess.
 Junior champion heifer: Hope Long.

SHOWMANSHIP

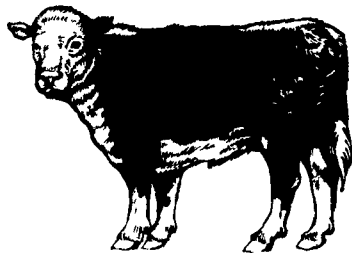
Winners included Katie Shultz, champion peewee; Derek Bröhm, Johnstown, reserve champion peewee; Jennifer Shultz, Dillsburg, champion intermediate; Krsta Moser, Philadelphia, reserve champion intermediate; Cari Turner, champion junior, Liz Hitz, reserve champion junior, Emilie Miller, Womelsdorf, champion senior; Margeaux Firestone, reserve champion senior.



Katie Shultz, Dillsburg, took home senior and grand champion heifer honors.



Margeaux Firestone, Womelsdorf, won reserve senior and reserve grand champion heifer placing.



June 1 Cattle On Feed 3 Percent Lower Than Year Ago

WASHINGTON, D.C. — Cattle and calves on feed for slaughter market in the United States for feedlots with capacity of 1,000 or more head totaled 10.94 million head on June 1, 2002, according to the National Agricultural Statistics Service (NASS). The inventory was 3 percent below June 1, 2001 and slightly below June 1, 2000.

Placements in feedlots during May totaled 2.23 million, 6 percent below 2001 and 3 percent below 2000. Net placements were 2.16 million. During May,

placements of cattle and calves weighing less than 600 pounds were 350,000, 600-699 pounds were 434,000, 700-799 pounds were 744,000, and 800 pounds and greater were 699,000.

Marketings of fed cattle during May totaled 2.17 million, 1 percent below 2001 and slightly below 2000.

Other disappearance totaled 72,000 during May, 29 percent below 2001 and 37 percent below 2000.

7 States Down 2%
 Cattle on feed June 1, 2002, in

the historic 7 States for feedlots with capacity of 1,000 or more head totaled 9.42 million, down 2 percent from the previous year and down slightly from June 1, 2000.

Placements in feedlots during May totaled 1.95 million, 5 percent below 2001 and 2 percent below 2000.

Marketings during May totaled 1.86 million, 1 percent below 2001 and slightly below 2000.

Other disappearance during May was 61,000 head, 31 percent below 2001 and 28 percent below 2000.

CATTLE ON FEED: Number on Feed, Placements, Marketings and Other Disappearance - 1,000+ Capacity Feedlots, United States, June 1, 2001-2002

ITEM	Number			2002 as % of	
	2000	2001	2002	2000	2001
On Feed May 1 ¹	10,944	11,170	10,951	100	98
Placed on Feed During May	2,305	2,372	2,227	97	94
Cattle Marketed During May	2,167	2,196	2,166	100	99
Other Disappearance During May ²	115	101	72	63	71
On Feed June 1¹	10,967	11,245	10,940	100	

* - Revised.

- 1 - Cattle and calves on feed are animals for slaughter market being fed a ration of grain or other concentrates and expected to produce a carcass that will grade Select or better.
- 2 - Includes death losses, movement from feedlots to pastures and shipments to other feedlots for further feeding.

CORN SUPPLY GETTING LOW?

TRY ROASTED CORN AND DISCOVER THE DIFFERENCE!



- ~ Higher Digestibility - 10% more available energy.
- ~ Purer Feed - Removes molds and reduces toxins.
- ~ Drier Total Ration - Better Rumen Health.
- ~ Greater Profits - Advance two to eight lb. per cow in milk with improved fat and protein.
- ~ Ask us about the availability of roasted corn.

SCHNUPP'S GRAIN ROASTING, INC.

416 Union Rd., Lebanon, PA 17046
 (717) 865-6611 800-452-4004

David N. Groff
 RD 3, Lewisburg, PA 17837 (570) 568-1420

May Milk Production Down Slightly In Pennsylvania

HARRISBURG (Dauphin Co.) — Milk production in Pennsylvania during May 2002 totaled 957 million pounds, down 0.1 percent from last year's production, according to the Pennsylvania

Agricultural Statistics Service (PASS).

The number of milk cows in the state during the month averaged 580,000 head, down 1,000 head from April and down 19,000 head from May 2001. Pro-

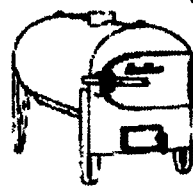
duction per cow averaged 1,650 pounds

in May, 50 pounds more than both April 2002 and May 2001. Milk production in the 20 states surveyed during May 2002 totaled 13.0 billion pounds, up 3.2 percent from May 2001. April revised production, at 12.6 billion pounds was up 3.3 percent from April 2001. The number of milk cows averaged 7.76 million head, 14,000 head more than May 2001.

Aqua-Therm

Outside Wood Burning Furnace

- Clean
- Safe
- Easy
- Efficient

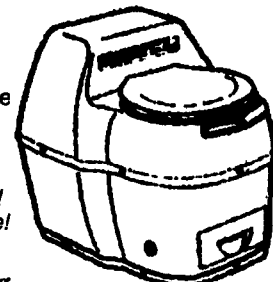


Buy the top of the line!
 *Stainless Steel Fire Box
 *Ash Removal Auger
 *15 Year Warranty
 *Thermostatically Controlled
 Heat your house, shop and/or hot water with one unit
For more information,
 call 717-838-9270 or 1-888-382-8170
 Email: mknovell@psonline.com

WATERLESS TOILETS

"SUN-MAR" Composting Toilets

Several models available including non-electric.
 • NO Septic System
 • NO Chemicals
 Save the Environment!
 Recycle Back to Nature!



FREE:
 18 Page Color Catalog

We Perform Septic Inspections & Certifications
 P.O. TECH Call Today 717-337-9325