

7511 Allentown Blvd.
Harrisburg, PA 17112

**75 TRUCKS
IN STOCK**

**AFFORDABLE
CARS AND TRUCKS, INC.**

"You Gotta Believe!!"

New Exit #72A, Rt. 81 N; Rt. 22 East of Harrisburg; 3 Miles North of Hershey Park

717-652-1925

FAX 717-652-4888

www.autotrader.com/view/
affordable car and truck



**00 FORD F350
XLT** Crew Cab, 4x4,
Longbed, 7.3 Powerstroke,
AT, AC, PW, PDL, Stereo
CD, Alloys, All Black,
80,000 Mi., Beautiful Truck,
As Always Wholesale
Priced Here At Affordable
\$24,995



**94 DODGE
RAM 2500** 4x4,
Laramie SLT, Cummins
Diesel, 5 Spd., AC, PW,
PDL, 2 Tone & Many
Extras, Only 102K,
Looks & Drives Like
New! **\$12,995**



92 DODGE DAKOTA SLT
4x4 Ext Cab, 318 V8, AT, AC, PW, PDL,
100,000 Mi., Nice Truck
\$4,500



93 FORD F250 H.D. 4X4
Ext Cab, Longbed, 7.3 International
DSL, 5 Speed, Nice Looking Truck,
Must See, 170K & Well Cared For!
\$7,495



**93 FORD HI TOP
CONVERSION VAN**
'Excalibur' Dual AC, Dual Heat, TV,
VCR, V6, AT, Cruise, Tilt, Has Only
50,000 Miles, Must See, Ready To
Travel **\$9,600**



92 DODGE DAKOTA SLT
4x4 Ext Cab, 318 V8, AT, AC, PW, PDL,
100,000 Mi., Nice Truck
\$4,500



**00 DODGE 2500 H.D.
RAM**
4x4, Quad Cab, 8' Bed, Cummins Turbo
Dsl, AT, AC, 100,000 mi.,
All Burgundy color,
Very Clean!
\$11,500



95 CHEV SUBURBAN 4X4
Silverado 350 V8, AT, AC, PW, Dual
AC, Barn Doors, 3rd Seat, Only 95K,
Real Clean Truck
\$11,500



93 FORD F250 XLT 4X4
Ext. Cab, Longbed, 7.3 Turbo Dsl,
5 Speed, AC, PW, PDL, Stereo, Tilt,
Cruise, This Truck Is In Showroom
Condition & Must Be Seen & Driven,
100,000 Mi. **\$14,000**



96 FORD F250XL
4x4, 7.3 Powerstroke DSL, 5 Spd., AC,
Has 150K But Looks & Drives Like 50K,
Come & See That I'm Correct -
I Guarantee It!
\$12,500



00 FORD F350 XLT
4x4, Super Duty Lariat Crew Dually,
7.3 Powerstroke DSL, AT, AC, PW, PDL,
Stereo, CD, Full Leather, 11,000 GVW,
All Black & Perfect!!! 90,000 Mi
\$26,995



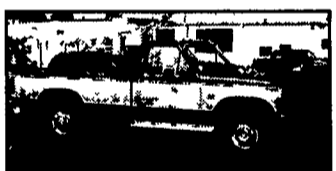
**00 DODGE 2500 H.D.
RAM**
4x4 Laramie SLT, Quad Cab, 8' Bed,
Cummins Turbo Dsl, AT, AC, PW, PDL,
Stereo, Loaded, 90,000 mi., All Blue &
Very Much Like Showroom Condition



97 FORD F250 XLT 4X4
H D Ext Cab Longbed, 7.3
Powerstroke Diesel, AT, AC, PW, PDL,
2-Tone Grey/White, Tow Package, Very
Clean & Well Kept, 102K
\$16,995



97 FORD F350 XLT 4X4
H D 7.3 Powerstroke Diesel, AT,
AC, PW, PDL, Stereo & Tow Package
9000 GVW, Extra Clean Truck,
Only 61,000 Mi
\$17,995



83 FORD F250 XLT 4X4
6.9 Int. Diesel, AT, AC, PW, PDL Very
Good Working Truck, PA
Inspected, 100,000+ Miles
SALE \$1,500



94 FORD F250 XLT
Ext Longbed, 2 Tone Green, 7.3 Turbo
Dsl, AT, AC, PW, PDL, 100,000 Mi.,
Looks Like New!
\$11,995



**96 CHEV 2500 4X4 SLT
SILVERADO SUBURBAN**
6.5 Turbo Diesel, 3rd Seat, Barn Doors,
Dual AC & Heat, 107K, Like New,
1-Owner **\$15,500**



98 FORD F350 SUPREME
16' Box Truck, 5.4 Triton Motor, AT, AC,
Stereo, Roll Up Door & Plank, Tow
Package, 100,000 Mi., All Mainte-
nance Records Perfect Shape!
\$10,995



**96 DODGE RAM 2500
4X4**
Laramie SLT, Ext Longbed, Cummins
Turbo DSL, AT, AC, PW, PDL, Dk
Green, Only 80,000 Mi.,
Very Nice Truck



96 FORD F250 XL
4x4, Ext Cab, Longbed, 7.3
Powerstroke Dsl, 5-Speed, AC, Cloth
Seat, Looks & Drives Like 70K, Does
Have 170K All Highway Light Pull, Must
See & Drive! **\$14,500**



96 FORD F250 XLT
4x4 Crew Cab, Short Box, 7.3 Power
Stroke, AT, A/C, PW, PDL, Stereo,
Alloys & More, Only 81K, Real Clean
Truck **\$18,500**



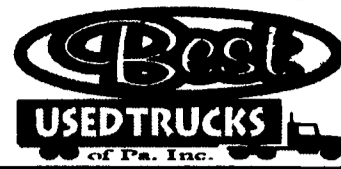
94 FORD F250 XLT
4x4 H D Ext Cab, Longbed, 7.3 Int
Diesel, AT, AC, PW, PDL, Very Clean &
Very Well Kept, Only 166,000 Mi., Runs
& Looks Like 60,000 Mi
SALE \$9,995



97 DODGE RAM 2500 4X4
Laramie SLT, Ext Longbed Cummins
Turbo DSL, 5-Spd., AC, PW, PDL, Stereo,
Red, Only 90,000 Mi., Like New!



95 FORD F250 XLT 4X4
H D Ext Longbed, 5.8 V8, 5-Spd., AC, PW,
PDL, Stereo, Expensive Color Keyed Leer
Cap, 100,000 Mi., Very Beautiful Truck,
Ready To Tow! **\$10,500**



131 Kline Rd., Bethel, PA 19507
We're Located Right On I78 @ Exit 17
WE BUY TRUCKS
717-933-9792
Fax 933-9782
www.besttrucks.net



(7) 1996 Freightliner FLD12042ST
Single Axle Day cabs, Detroit 12.7-
365 hp, 10 speed, 4.33 rear ratio,
166" wheel base, Air ride, Jake brake,
White, 12/23k axles, Miles 490K &
Up
Starting at \$10,000



1993 Ford LN8000 22' Reefer,
Cummins 8.3-210, 6 speed,
33000# GVW, air brakes, 153k
miles, RD11 30 Reefer unit, roll
up rear door, diamond plate floor,
white in color
\$13,000



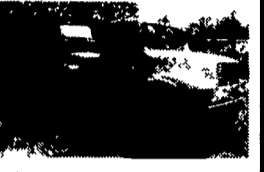
1995 Freightliner FLD12042ST
48" Flat top sleeper, Detroit 12.7-
365hp, 9 speed, 534k miles, jake
brake, white w/stripes, steel
wheels, 11R22.5, new steers,
aprox 216" wheel base
\$11,000



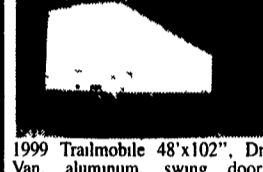
1982 Mack WS7861ST Tri-Axle Roll
Back, 24'x95" wide bed, Mack 300
hp engine, T2050 transmission, Mack
camelback spring suspension, spoke
wheels, Tulsa 10 ton winch on bed
w/150' heavy cable, out riggers on
rear, 198" wheel base, white/blue cab,
Lots of work done by Mack with
papers! **\$9,000 OBO!**



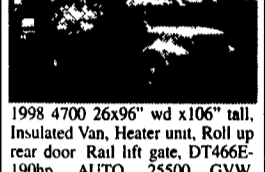
1977 Ford F800 Pole Digger,
477 Gas, 5/2 speed, blue, runs
great, everything works, selling
as is
Asking \$3,000



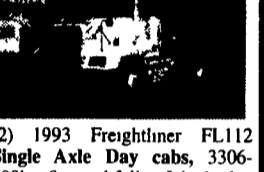
1996 International 4900 18' Cab
& Chassis, DT466-210hp, 6
speed, 144k miles, White, 218"
wheel base, 33000# GVW, air
brakes **\$15,000**



1999 Trailmobile 48'x102", Dry
Van, aluminum, swing doors,
sliding Tandems, white, spring ride,
wood floor, 2 rows of "E" Trac
\$13,000



1998 4700 26x96" wd x106" tall,
Insulated Van, Heater unit, Roll up
rear door Rail lift gate, DT466E-
190hp, AUTO, 25500 GVW,
Hydraulic brakes, Premium
Interior, White, 11R22.5, Ac, 192k
miles **\$18,000**



(2) 1993 Freightliner FL112
Single Axle Day cabs, 3306-
300hp, 9 speed fuller, Jake brake,
air ride, 500k miles, steel wheels,
Low pro tires, AC **\$7,000**

"Bid on our trucks at:" www.truck-network.com

LANCHESTER TRAILER SUPPLY TRAILER PARTS SERVICE - INSTALLATION

Putnam Hitch Products
Class 2, 3, 4, & 5 Hitches
• Saturday Appointments Available For Installation



Full Line Of Trailer Parts

- Brake Controllers
- Ball Mounts
- King Pins
- Wide Load Signs
- Flags
- 12 V Electric Winch
- Vacuum Brake Kit for Truck and Trailers
- Dexter Axles
- Hitches
- Hitch Balls
- Pintle Hooks
- Wide Load Mirror
- Deka Batteries
- Jacks
- Tires and Wheels
- Lights
- Wiring
- Load Lok
- 12 Volt Hyd Pumps

OVERSIZE LOAD
Signs
2" x 27' Ratchet Strap **\$17.50**
4" x 27' Strap **\$14.50**
4" x 30' Strap
Case Lots on 10 Pcs. or More
10% OFF

Authorized Distributor For
Federal Signal
Strobe and Revolving Lights,
Amber and Blue
Large Selection In Stock

Now An Authorized
MPace AMERICAN
Dealer
Single, tandem or triple axles available

Also Available: UTILITY TRAILERS & SKID STEER TRAILERS
INSTALL HITCHES • TRAILER REPAIRS • OTHER SERVICE
Now Open For State Inspection On Trailers

LANCHESTER TRAILER SUPPLY
Formerly David A. Fisher Trailers
3220 East Gordon Rd., Gordonville, PA
717-768-0663
6.15 - 5.00 M-F • 7:00 - 1:00 Sat