

### Public Auction Register

Closing Date Monday 5:00 P.M.  
of each week's publication

Internet Sale Register will be updated  
by Friday at 12 Noon

#### ATTENTION AUCTIONEERS

All sales register info needs complete address,  
street, town, county & state.

FRI JUNE 21- 11AM & SAT  
JUNE 22 - 9AM Tractors, farm  
machinery, parts, real estate, 308  
Freeport St Saxonburg, PA,  
James Alderson, John R Huey II  
AU-01588-L 724-794-4737  
FRI JUNE 21 - 6PM Tractors

crawlers, trucks, produce equip,  
general purpose machines,  
Oswego County Rd 7, NY, James  
Pirung 585-728-2520

FRI JUNE 21-9AM & SAT JUNE  
22 - 9 30AM Kitchen & bath cabi-  
nets, bath fixtures, appliances,  
doors, windows, Rt 175 & Rt 1,  
Jessup MD, Southern Sales Ser-  
vices, 443-755-9494

SAT JUNE 22 8 30AM Farm &  
antique tractors, industrial equip,  
trucks-auto-trailer, lawn & garden,  
5914 Glen Falls Rd, Reisterstown,  
MD Jim Uhler, Wolfe Industrial  
Auctions, Inc 800-443-9580

SAT JUNE 22 - 8 30AM, house-  
hold, collectibles, farm equip  
autos, tractors, tools at RD#2 Mif-  
flinburg, turn off Rt 45 at Mif-  
flinburg Farm Supply, toward  
Cowen 1 mile to sale on left by  
Ken Smith AU867-L, Dennis Has-  
singer AU2689-L, 570-837-3535,  
570-837-3159

SAT JUNE 22 - 8 30AM AC B-  
10 tractor w/attachmnts, tools,  
antiques household goods Rt

343 across from Fredericksburg  
Firemen's Park, Leb Co, Weik &  
Weik, AU988-L

SAT JUNE 22 - 8 30AM 3 bdrm  
rancher, 3/4 acre lot, antiques  
personal property, tools, IH trucks  
at 700 Lauschtown Rd, Denver,  
PA for Robert E & Elva R Lorah,  
Kline, Kreider & Good Auction-  
eers Lic #499, #2116 #3433  
717 733-1006

SAT JUNE 22 - 8 30AM Farm &  
antique tractors, industrial equip,  
trucks, auto, lawn & garden, 5914  
Glen Falls Rd, Reisterstown, MD,  
for Jim Uhler Wolfe Industrial  
Auctions, Inc 800-443-9580

SAT JUNE 22 - 8 30AM Antiques,  
glassware, furniture, household  
goods, tools at 730 Pearl Ave.,  
Manheim, Pa, Go South on Rt 72  
from Manheim to Manheim  
Chrysler Plymouth Dealership  
Turn west on Sun Hill Road Con-  
tinue to Pearl Ave to Auction Site,  
watch for signs By Witman Auc-  
tioneers AU001127-L, 665-5735  
FAX 717-664-2737, www.wit-  
manauctioneers.com

SAT JUNE 22 - 8 30PM Antiques,  
hh goods, woodworking equip,  
tools, guns 730 McAllister St,  
Hanover, Romaine & the late Ivan  
Dutrerer, Randy L Hiker PA-AU-  
002095-L

SAT JUNE 22 - 9AM Steiner  
Series 525 four wheel drive, rotary  
mowers, front end tiller, Ranger 8  
gas powered welder, power tools,  
misc items at Youngstown Fire  
Hall, Youngstown, PA Rt 30 E to  
Rt 982 S (Youngstown Clover-  
leaf), approx 1 mi., right at light,  
follow signs to sale site By Mark  
Ferry Auct AU1589 724-423-  
5580

SAT JUNE 22 - 9AM  
Const equip, tools, vehicles, farm  
equip, Interstate 81, to Delano  
exit 134, S approx 800 ft right on  
S Ground Road, look for auction  
signs, near Hazelton by Robert A  
Arner AU00024-L, Dean R Arner  
AU003421-L, 570-386-4586

SAT JUNE 22 - 9AM personal  
property 66 Gunhart Rd, Mohr-  
ton, Robeson Twp, Berks Co  
From Rt 10 take Rt 568 W, turn  
left on Gunhart Rd to auction on  
rt By Jane Cook Horning Farm  
Agency Inc 610-286-5183  
AU2417L

SAT JUNE 22 9AM Horse Sale  
Mel's Stables 834 Wallace Rd  
New Holland, Pa Mel Hoover  
AU003111L, 717 354 8397

SAT JUNE 22 9AM Real  
estate, furniture, glassware  
household, tools, collectibles at  
214 N Main St, Shrewsbury  
York Co, PA Kenneth Keeney  
Auct AU2797L

SAT JUNE 22 - 9AM Instru-  
ments, glass, china, appls col-  
lections, furniture, tools Mt Airy  
& Scott Rd, Providence Twp,  
Lanc Co, for Gladys M Brubaker  
Estate, Probst Family Auction  
AU-001856-L, 717-464-3700

SAT JUNE 22 - 9AM Butcher  
equip, pickup, car, woodworking  
equip, tractors, horse buggy &  
sleighs, guns, 2164 Mountain Rd  
Hamburg, 19526 Thomas G  
Werley, Zettlemoyer Auction  
#AY-000131-L 610-395-0227

SAT JUNE 22 - 9AM Driving  
Work Horse Sale Horses hitched  
At 8 30AM Sale held at Mel's  
Stable, 834 Wallace Rd, New  
Holland, PA Auct Mel Hoover  
AU003111L 717-354 8397

## REFTON COMMUNITY FIRE COMPANY

### 6TH ANNUAL SALE SAT. JUNE 29TH 2002 @ 8:30 AM

99 Church St., Refton, Pa.

(Along 222, 6 mi S. from Lancaster, 6 mi N from Quarryville)

#### Small Wagon Goods

#### Woodcrafts

#### Truck Load Groceries

**Household Goods & Furniture** New electric  
wheelchair New mattress - 1 king size cherry  
waterbed, 2 new oak bedroom suits, Barn board  
furniture

**Lumber:** 2x4's, 2x6's, New & Used Windows -  
Doors - plus more

**Antiques & Collectibles:** Tins, Country Milk  
Bottles, misc items, Constitution of USA, Old  
floor model radio

**New & Used Carriages, Spring Wagons &  
Carts:** 1 new spring wagon 2 seats, 1 new fiber-  
glass open buggy, 1 new breaking cart w/lights  
and brakes, rebuilt fiberglass market wagon.

#### 2-3-4 Horse Hitches & Harnesses:

New urethane pony harness - new urethane  
buggy harness.

#### New & Used Farm Equipment:

Baler - Rakes - Corn Picker - Spring Harrow -  
Disk Rollers - Plows - Wagons - Forecarts - Fall  
Harvesting Equipment, 1941 Ford 9-N tractor, 2  
speed, D.S Mfg. 1300 gal tandem axle rear  
spinner, 1300 gal tandem axle gravity spreader,  
Beiler Farm Shop 14' engine tedder, 10ft high  
clearance harrow, White Horse forecart, Fisher  
field sprayer w/tongue and steel wheels, New  
style Summit Hill Disc mower, New 3 row  
Summit Hill chopper w/4 cyl diesel and hyd., 2  
row Summit Hill chopper w/Deutz diesel,  
Lancaster manure spreader, New Cedar Hill fore-  
cart, Gap Hill 8x18 bale wagon, NH 258 rake  
(good condition), Pequea Tedder, Pequea HR10  
Rotary hay rake, 2 Beiler welding forecart, 1  
w/hyd brake, 16' flat bed wagon w/corn chute  
and sides, 4 star Deutz Bar cage 500 tedder 16  
w/engine, 4 stall calf hutches, wood feed bin,  
bolt bins, feed carts, scooters, A&D Mfg Hyd  
portable hoof trimming table, 7 ton feed bin,  
brooms, shovels, forks and dairy supplies by  
Noble Road Milking Equip, Corral panels and  
gates by Smyrna Grove Mfg

#### New & Used Tools & Contractor Equipment

2 Lincoln welders - portable

#### Quilts & Crafts:

Log Cabins, Wedding Rings,  
Dresden Plates, Lone Stars, Sunshine &  
Shadows, Plus many more

#### New & Used Hardware & Shop Tools.

#### Dog Boxes - Sheds - Lawn

#### Furniture

#### Loads of Hay & Straw

#### Horses:

Driving Horses - Horses will be hitched  
Consigned by Christ Stoltzfus, Ivan Petershiem,  
Stevie Stoltzfus and others

#### Lawn & Garden

#### MANY ITEMS NOT LISTED ITEMS SOLD ON CONSIGNMENT - DONATIONS APPRECIATED

For information call 768-3239 or  
Firehouse 786-9462

No Pets - No Tires - No Hazardous Materials -  
No Poultry Equipment

Not Responsible for Accidents or Theft - \$35.00 Deposit  
on all Appliances & Electronics

Deposit will be refunded upon removal of item

#### TERMS BY: REFTON COMMUNITY FIRE COMPANY

Consignments Accepted Wednesday  
June 27th - Friday June 29th

NO OUT OF STATE CHECKS - NOT AN  
ABSOLUTE AUCTION - VISA,  
MASTERCARD

If items not moved in one week, Refton Fire Company  
will take possession!

Conducted by Local & Well Known Auctioneers  
- Refton Community

Fire Company reserves the right to reject or accept any and all items

NO SUNDAY PICKUPS - GROUNDS WILL  
BE CLOSED SUNDAY

LOTS OF FREE PARKING - DELICIOUS  
HOMEMADE FOOD AND CHICKEN BBQ  
BY REFTON COMMUNITY FIRE COMPANY

## Sale Reports

#### CRITES SALE

An auction was con-  
ducted on Thursday,  
June 13 by Horst Auc-  
tioneers for Ralph and  
Joan Crites. Real estate  
sold for \$163,800 to Jef-  
frey A. Bowlby, Lititz.

#### WITHERS

#### ESTATE SALE

Two real estate auc-  
tions were conducted on  
Monday, June 17 by  
Horst Auctioneers for the  
estate of Esther Withers.

A frame semi-  
detached two apartment  
dwelling in Ephrata sold  
for \$80,600 to Ridge  
Builders General Con-  
tractors, Inc., Lititz.

A brick Victorian 2 1/2-  
story dwelling with  
frame barn and block ga-  
rages located on West  
Main Street, Ephrata  
sold for \$134,000 to  
Steven Ravegum,  
Brownstown.

#### SNOOK

#### ESTATE SALE

An auction was con-  
ducted for the estate of  
Arla Snook by Hassinger  
and Courtney Auc-  
tioneers.

Real estate sold for  
\$147,000.

Other items included a  
John Deere lawn mower,  
\$1,250; large Bibles,  
\$210; a wash stand, \$650;  
and a dry sink, \$500.

#### RHOADS MILLS SALE

An auction was con-  
ducted on June 12 for  
Rhoads Mills, Sel-  
insgrove, by Hassinger  
and Courtney Auc-  
tioneers.

Highlights included a  
1991 GMC dump truck,  
\$14,500; a 1994 Isuzu  
cube van, \$8,250; a fuel  
tank, \$1,100; a cash reg-  
ister, \$75; and dog food,  
\$7.

#### ALL DAY

### PUBLIC AUCTION

After 26 successful years, we have been commis-  
sioned to liquidate Gatz's Tombs Lane,  
Montoursville (Lycoming Co.), PA. Watch for  
auction signs off Broad St in Montoursville.

**SAT., JUNE 29, 2002**

**AT 9:00 A.M.**

Shop equipment, Tools, '85 Chev. stake body  
truck, '78 MFG Gypsy motor boat & Tee  
Nee Trailer, 1977 Sterling 16' diamond plate  
stake body trailer, Clark fork lift, Fun  
Wheels mini racer, office furniture, excess  
supplies & merchandise.

Complete listing in Sun Gazette Sun.,  
6/23/02, or call auctioneer for fax.

Lunch & parking available. Tents, if needed.

Conducted by

**Scott Younkin & Associates**

AU-1666-L.

Phone (570)-323-9011



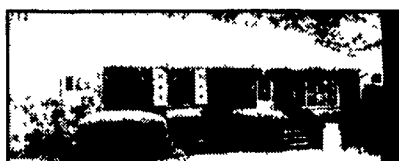
## PORTERFIELD AUCTIONS

#### REAL ESTATE AUCTION

657 Euclid Ave. Lancaster

**Sat. June 29 @ 11:00AM**

(From 272S Lancaster turn right at light onto Hershey  
Ave, follow to light turn left onto Wabank Road, to  
first left onto Euclid Ave. to sale )



**Open House Dates: Sunday from 1-4:00pm.  
Or by appointment**

**Nice clean Ranch Home!!**

**1-877-TOP BUCK or (717) 284-5056**

Visit us at [www.porterfieldauctions.com](http://www.porterfieldauctions.com)  
Terms: Cash, PA Check, Cert Funds, VISA, MC & MAC  
Bob Porterfield Auct AU-003741-L

Request email flyer #020629R info @porterfield.auctions.com

## Lancaster Farming Sale Report Providers:

Lancaster Farming will require sale reports to  
be individually prepared and faxed directly to our  
office or contact Tara Liddell (717) 626-1164  
Monday 8 a.m. - 3 p.m.

Use this form if faxing directly.

--The Editor

**SALE REPORT FOR LANCASTER FARMING  
MUST BE TYPED, CLEARLY, ON THIS FORM  
LIMIT ONE PAGE ONLY  
FAX TO (717) 733-6058  
ATTN: TARA LIDDELL**

**DEADLINE: MONDAY 3 p.m. WEEK OF ISSUE DATE**

Sale Date \_\_\_\_\_

Auctioneer \_\_\_\_\_ Phone No: \_\_\_\_\_

Seller's Name: \_\_\_\_\_

Location (town, state): \_\_\_\_\_

Description of Sale: \_\_\_\_\_

\_\_\_\_\_

\_\_\_\_\_

\_\_\_\_\_

\_\_\_\_\_

\_\_\_\_\_

\_\_\_\_\_

\_\_\_\_\_

\_\_\_\_\_

\_\_\_\_\_

\_\_\_\_\_

\_\_\_\_\_

\_\_\_\_\_

\_\_\_\_\_

\_\_\_\_\_

\_\_\_\_\_

\_\_\_\_\_

\_\_\_\_\_

\_\_\_\_\_