

Dairy Day 2002 At N.Y. State Fair

SYRACUSE, N.Y. — The 24th annual "Dairy Day" will be Monday, Aug. 26 at the New York State Fair in Syracuse.

New York State dairy industry leaders and friends will once again meet at the New York State Fair to participate in this event. The fair dates for this year are Aug. 22-Sept. 2.

On Dairy Day, Aug. 26 at approximately 11 a.m., four-40 pound blocks of Gold Medal cheese produced in New York

State and donated by the NYS Cheese Manufacturers Association will be auctioned to the highest bidder as part of efforts to promote the state's dairy industry.

Bidders are invited from retail and commercial establishments throughout New York to bid on the cheese. Past bids were approximately \$500-\$1,000. Successful bidders have included restaurants, hotels, utilities, Ag Radio Network and others.

The New York State Cheese Manufacturers Association is also donating a number of "party baskets." These baskets will include a variety of cheese and other products from throughout New York State. These attractive baskets will be auctioned to the highest bidder. Past bids were approximately \$75-\$300.

A number of 2½-pound and 5-pound packages of aged cheddar cheese will be auctioned to the highest bidder prior to the sale of the Gold Medal cheese. Arrangements have been made to store the small packages in the cooler at the cheese booth in the Dairy Products Building, to be picked up later by successful bidders.

For more information, call Bruce W. Krupke, (315) 452-6455.

Red Angus "Bulletin Board" A Proven Market For Breeders

DENTON, Texas — Commercial and purebred producers have found a new market for their quality Red Angus replacement females, through the use of the Red Angus marketing program's "Bulletin Board."

The Bulletin Board, which can be accessed at www.redangus.org, is designed to provide information on Red Angus-based replacement females that are for sale.

Established in February, the Bulletin Board has listed over 1,800 head of Red Angus females. The board provides an opportunity to purchase source-verified, high quality, replacement females.

Entirely Internet-based, the Bulletin Board is up-dated frequently to provide the most current information available. Producers list groups of females — regardless of size — free of charge by simply contacting the Red Angus Association of America.

Prospective buyers can view the board at their leisure for information on genetic background, health, and management of groups for sale. Ultimately, the it assists producers in receiving the full value of Red Angus females whether they are to be marketed through a sale barn, video auction, or private treaty.

To view females currently listed, go to the RAAA home page www.redangus.org and click on the "Bulletin Board" link.

If you would like to list females on the "Red Angus Bulletin Board", contact Sara Moyer or Ann Holsinger at 940-387-3502

New York State Fair Ticket Request Dairy Day 2002 Reply Form

Please return no later than August 1, 2002 to

New York State Fair - Dairy Day
New York State Fair
581 State Fair Boulevard
Syracuse, NY 13209

Yes, I am happy to accept your invitation to 'Dairy Day' at the New York State Fair, Monday, August 26, 2002 (Good for admission on "Dairy Day" only)

Please send tickets to

NAME _____

TITLE _____

ADDRESS _____

CITY/TOWN _____ STATE _____ ZIP _____

(NOTE All tickets will be mailed to this address)

NUMBER OF TICKETS _____

ATTENDEES

NAME _____

NAME _____

NAME _____

NAME _____

Signed: _____ Date _____

Soybeans Can Reduce Ration Cost

GREEN BAY, Wis. — The use of soybeans as a protein source for dairy cattle can result in great cost savings. Doing so in certain rations may not decrease milk production, and may significantly increase profitability.

Different nutrition consultants seem to have differing points of view on this subject. Dwayne Splan, a nutrition consultant with Bay Lakes Cooperative, says, "There are differing schools of thought on protein. Most people try to limit the amount of vegetable fat to one pound per day. However, raising the amount of vegetable fats fed can be quite economical, if doing so significantly lowers the ration

cost without large dips in milk volume."

Another nutrition consultant with Bay Lakes Cooperative, Carolyn Long, is a bit more cautious when recommending protein for the dairy ration. She says, "We must customize each ration for the needs of each farm. Variables that must be considered are forage quality, forage combinations, the total amino acid mix, as well as several others. Going to a cheaper mix may appear to save money, but if production falls too much it certainly wouldn't be worth the savings. If the total balanced ration isn't quite right, it may leave cows under their peak production. That effect would not be noticed for some time and it may take a long time to get production back up once the effect is noticed."

Dennis Zirbel, co-owner of a 250-cow dairy near Greenleaf, has seen great financial results. He says, "Two years ago, we built a 30-by-128-foot tower silo. Because we experienced so much less spoilage in the tower than the packed piles, we were able to plant (soy)beans and wheat on the saved acreage. We have now begun to use the beans to replace

our protein supplements. This has reduced our ration cost to save us about \$7,000 every month. We have yet to see our production fall off because of it.

"When I first suggested using the saved acreage to plant beans, the nutritionist advised us against using the beans in the ration. But, we have been feeding soybeans to cover the protein needs for over a year, and have not seen any adverse effects on the herd average."

Splan of Bay Lakes Cooperative explains, "At Bay Lakes we have been using a ration balancing program called AAMPS for about a year. It helps to give us insight into the protein aspect of the ration. We would likely use this system to identify the possible results of adding soybean to the ration. This program has aided us in helping farms of all sizes become more profitable."

It is clear that adding soybeans to a dairy ration may result in increased profits. However, in doing so each producer must check their individual ration to be certain that the decreased milk production would not offset the savings gained by using soybeans in the ration.



Heavy Duty Bale Movers

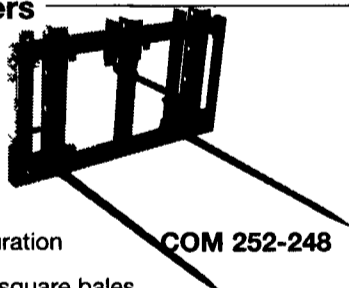
Finished with a zinc rich under coat & polyester top coat.

With Kverneland Forged Steel Spears • Electrically Heat Treated
These spears are stronger & allow easier bale penetration.

Combination Bale Movers



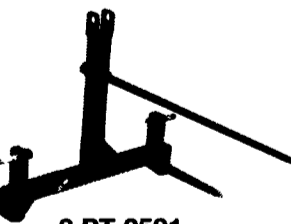
- Available with either quick attach (specify make or model) or 3PT hitch/loader boom mounting hardware
- 2500 lb. capacity
- Easily change spear configuration
- Designed to move either round or square bales



COM 252-248

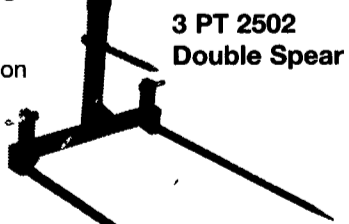
COM 253-338

3 PT Hitch Bale Movers



3 PT 2501 Single Spear

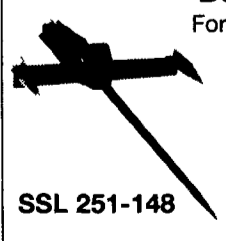
- Easily change spear configuration
- 1500 lb. capacity



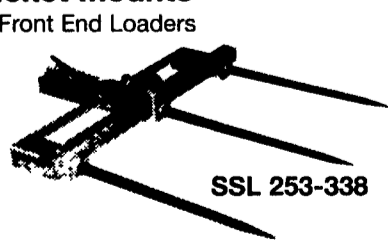
3 PT 2502 Double Spear

Bucket Mounts

For Front End Loaders

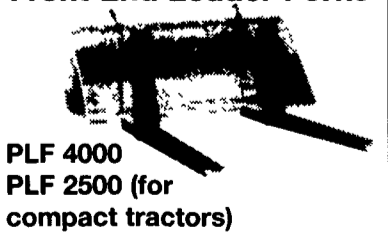


SSL 251-148



SSL 253-338

Front End Loader Forks



PLF 4000
PLF 2500 (for compact tractors)

Paul B. Zimmerman, Inc.

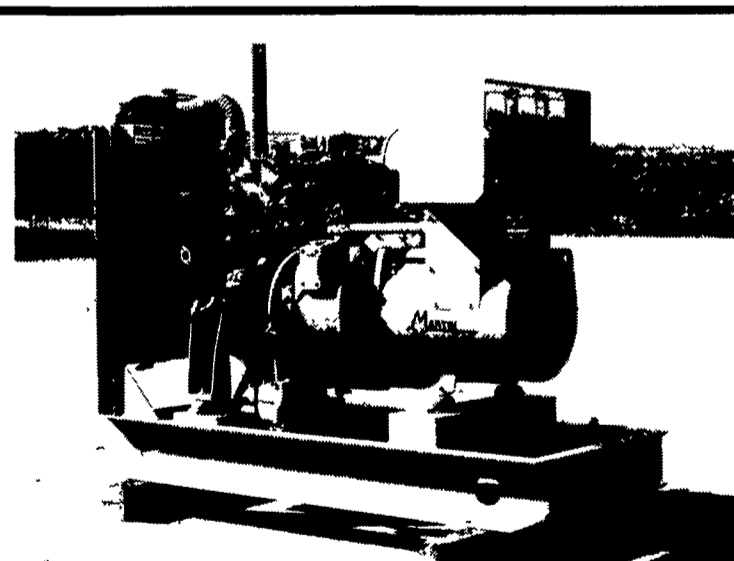
295 Woodcorner Road • Lititz, PA 17543

717/738-7365

1 mile west of Ephrata

Call or write for additional information and the name of your nearest dealer.

Hours:
Mon - Fri: 7-5



GENERATORS

Sales ★ Service ★ Rentals
Complete Generator Systems
PTO • Portables • 2-1600 KW
We Service It If You Have It,
And Sell It If You Need It.



34 W. Mohler Church Rd.
Ephrata, PA 17522
Tel: 717-738-0300
Fax: 717-738-4329