

# DEP Secretary Visits Watershed Association, Tours Dairy Farm

HARRISBURG (Dauphin Co.) — On behalf of Gov. Mark Schweiker, Department of Environmental Protection (DEP) Secretary David E. Hess recently visited with the Chillisquaque-Limestone Watershed Association in Montour County to hear solutions the association and local partners have developed for watershed problems.

"The Chillisquaque-Limestone Watershed Association is a very young group, but I'm impressed by its vision for the future and its ability to form effective partnerships with three conservation districts, PPL Electric Utilities Corp. and others," Secretary Hess said.

Chillisquaque-Limestone Wa-

tershed Association President Thomas Benfer also gave Secretary Hess a tour of the Shultz Brothers dairy farm in Montour County to see how best management practices, such as stream-bank fencing, have improved the water quality of Mud Creek, a tributary of Chillisquaque Creek.

"I'm very pleased Secretary Hess is interested enough to visit our watershed and learn about our needs," Benfer said. "We need to increase the public's awareness of our watershed and its problems to build our membership, which will help us with specific projects in the future."

During his visit, Secretary Hess also toured a site on the Chillisquaque Creek where the Montour County Conservation

District has applied for a Growing Greener grant. The project is for the design and permitting of streambank and channel stabilization at PPL's Montour Preserve, where erosion is causing sedimentation problems and threatening footbridges and interpretive trails.

The summer issue of *Foraging Around*, the newsletter of the Pennsylvania Forage and Grassland Council, is scheduled July 13 in *Lancaster Farming*.

The section is scheduled to include feature information about Project Grass. Included: grazer features, grass-fed beef reports, and news and notes for the grazer and hay grower.

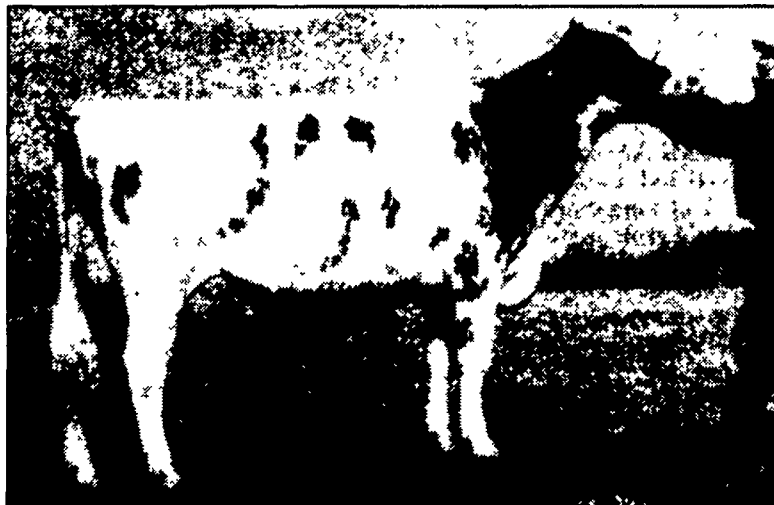


## Red And White Cow Tops 60,000 Pounds Production In 365 Days

MARSHFIELD, Wis. — The Red and White Dairy Cattle Association (RWDC) has announced a new breed record for milk production. Sikkema-Star Licric Vee-Red, owned by Bill and Roxanne Case of Marshfield, Wis., has completed a new world production record of 60,694 pounds of milk with 2,592 pounds of butterfat and 1,767

Her dam is by Blackcrest Karmel, with two records over 24,000 pounds of milk. Her granddam, by To-Mar Wister, is a daughter of Exranco Ehancer Vee-Red, who was classified Very Good-87 and awarded Dam of Merit status.

The Cases purchased Vee at the Sikkema Star Holstein Dispersal Sale in 1995. Vee sold as a



Sikkema-Star Licric Vee-Red

pounds of protein, produced from twice a day milking over 365 days. This third lactation for Vee is her second over 50,000 pounds of milk, surpassing the previous record set in January by Elm-Park Moselle-Red-ET.

An outstanding production and type individual, Vee is classified Excellent-91. She is a daughter of Sire Hi-Val Licorice-Red.

three-day-old calf for \$225, and instantly began her life in the limelight for the Cases.

"The cow is wide-muzzled and never quits eating," said Bill Case. "She never has. She's one dairy machine."

Vee's first daughter in production, Victoria, is also making her mark in the herd, having just completed her first lactation with over 38,000 pounds of milk.

Walk-In • Catalog • Web Sales - [www.farmerboyag.com](http://www.farmerboyag.com)  
Call or email us today for a FREE catalog. TOLL FREE 1-800-845-3374 • 717-866-7565

### Your Complete Fan Supplier



**AIRSTREAM** ventilation systems A Division of **GS1**  
"PERFORMANCE"™ SLANT-WALL BELT DRIVE FANS/CONE OPTIONAL  
LIFETIME-GUARANTEED FIBERGLASS COMPOSITE HOUSINGS / CONE OPTIONAL

See Us For A FREE Design & Cost of a TUNNEL VENTILATION SYSTEM To Fit Your Building

#### 8 FT. BALE FEEDER WITH MESH LEGS



#### FEED BINS

With CORE AUGERS and Flex-flo™ AUGER SYSTEM



QUALITY PRODUCTS AT WHOLESALE PRICES

In 2 1/4" dia. to 5" dia.

We assemble, deliver and set up bins on your farm.

- Weather tight die-formed roof
- Stronger engineered sidewalls
- Ground controlled fill caps
- Galvanized roll-formed legs
- Engineered leg braced systems
- Fast flowing hopper bottom

EXPERIENCED & KNOWLEDGEABLE SALES STAFF

**Lil Spring**

#### LIVESTOCK WATERERS

8 Gal.  
1-Hole w/Heat #612010382  
2-Hole w/Heat #612010383



#### BASKET FANS

With Cord and Ceiling Mounting Brackets Direct Drive  
1/3 Hp, 24", 1/2 Hp, 24" & 1/2 Hp, 36"  
Quantity Pricing Available



#### LOOPSTALLS HEADLOCKS



- 1.9 O.D. high yield tubing 13 gauge wall
  - Gates with round corners for safety & strength.
- Features slant bar feed through fence, built to any length.

### NORTH BROOK FARMS

#### DURABED COW MATTRESS



- 100 oz. Waterproof the only one of its kind
- The Heaviest • The Driest
- The Strongest • The Most Effective
- The Best Why Buy Anything Else?

Call Us For All Your DAIRY - POULTRY - SWINE Remodeling & Equipment Installation Needs

**M-80 ENERGIZER**  
• Handles up to 30 acres  
• Replaceable module circuits  
• Stored Energy • 8 Joules  
• 2 Year Warranty with Gallagher Lightning Protection

**GALLAGHER**  
Electrical fencing parts and accessories IN STOCK.  
Complete packages available.



#### S17 SOLAR ENERGIZER

- Handles up to 10 Acres
- Rechargeable battery included
- 2-year Warranty with Gallagher Lightning Protection

All Types of Fence Wire IN STOCK

Ask about INSTALLATION & 24 HOUR SERVICE after the sale.

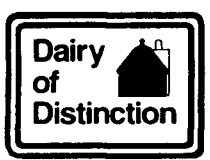
**FARMER BOY AG Supply**  
WHOLESALE AGRICULTURAL SUPPLIES

1-800-845-3374

Same day shipping on in-stock items

410 East Lincoln Ave., Myerstown, PA 17067 • Hours: Mon. - Fri. - 6:30 - 5:30 • Sat. - 7:30 - noon

Lancaster Farming's annual Dairy of Distinction section is July 27. The issue is scheduled to include feature farm reports on more than two dozen Dairy of Distinction award winners. Watch for it!



### Let Your Crops Dine On Alpine

The Company That Offers You High Quality Plant Food At Competitive Prices Dealer Inquiries Welcome

Talk To Us About Seed Banded Plant Food And Foliar Feeding  
Place Phosphorus Where It Does Most Good (Seed Banded)

6-24-6 9-18-9 3-18-18 5-15-15  
Check Early Order & Quantity Price

**Zimmerman Lime & Fertilizer, Inc.**  
235 W Burkholder Dr (717) 733-7674 Lititz, PA 17543  
Dealer of Raven Liquid Storage Tanks

### MRI - At Affordable Rates \$25.00

**LEBANON OPEN MRI**

1033 Quentin Road  
Lebanon, PA 17042  
717-228-2600  
800-298-1558  
Call 8 AM - 5 PM M-F

Most Insurances Accepted

- New state-of-the-art Open MRI
- Most experienced Radiologists in the area
- Friendly professional staff
- Reports to your doctor within 24 hours
- We accept \$475.00 cash or credit card as full payment for a normal study, including doctor reading fee.

It's Worth The Drive