

**CHAPMAN FORD LINCOLN MERCURY NISSAN**

717-272-7671  
Parts Dept. Open Daily 8-5  
Sat. 8-12 717-273-8168



**LEBANON**

20th & Cumberland Sts.  
Rt. 422 West  
9-9 Daily, 9-5 Sat.



**98 FORD F150 XLT EXT. CAB**  
4x4, "Auto", P/S, P/B,  
32K Orig. Miles #PL5064



**02 FORD EXPLORER**  
XLT, 4x4, "One Owner"  
#P5103



**02 FORD F150**  
"SUPER CREW" 4X4, Only 15K Miles  
#P5125



**91 FORD RANGER XLT**  
4x4, "Must See"  
#4618F



**01 FORD EXPLORER**  
XLT, Only 18,000 Miles  
#P5038



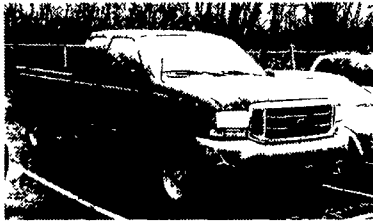
**01 FORD EXPLORER SPORT**  
4x4, Auto, Fully Equipped  
#PL5096



**98 FORD EXPLORER**  
V-8, AWD, P5005  
"Must See"



**00 NISSAN EXTERRA**  
"SE", Auto, 4x4,  
#P5113



**00 FORD F250**  
Extend Cab, XLT, 6-Spd.,  
Only 37K Miles, #PL5057

**TRUCKS - UTILITY VEHICLES - TRUCKS**

**GM Goodwrench Engines**

feel the confidence



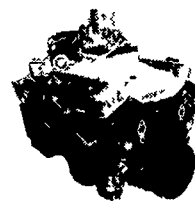
THE FEELING IS GENUINE



- 12 Month Minimum Warranty
- Limited 36 Month Warranty
- Shipped As Shown

86 and prior carbureted 4 bolt main....\$1,370  
87-95 TBI, Truck, 2 bolt main.....\$1,799  
87-96 TBI, 3/4 Truck, 4 bolt main.....\$1,899

**Pro-built Custom Engines**



MORE THAN JUST POWER.

**470 HP-355CI Street / Strip**

Carb to pan pkg. Includes Fuel Pump,  
Distributor, Wires, Demon Carburetor,  
Victor Jr. Intake and Dyno Sheet

Only \$4,500

**355CI TBI Upgrade**

325 HP 400FT-LBS. Dyno Proven HP 87-95  
Trucks With Dyno Sheet

Only \$2,995

*Jones*  
**Parts Warehouse**  
A Division of Jones Family of Dealerships

Prices are subject to change. Prices do not include shipping.  
Please call for the best possible shipping prices for you

1-800-827-0219

PONTIAC • HONDA • GMC TRUCK • ACURA • USED CAR CENTER  
1335 Manheim Pike • Lancaster, PA  
**717 394-0711**



Prices based on straight sale. Tax and tags extra. Trades accepted at actual cash value. Must present this ad at time of purchase for sale price.

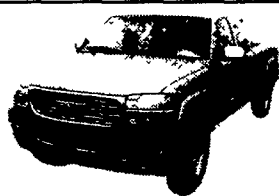
**JONES QUALITY PRE-OWNED BEST BUYS!**



**NEW 2002 GMC 15' CUBE VAN**  
Auto, Air, 350, #40341,  
MSRP \$30,399  
SALE **\$25,900\***



**NEW 2002 GMC CREW CAB 4X4**  
Auto, Air, 6000, V8, Trailer  
Package, #33934,  
MSRP \$32,730  
SALE **\$29,999\***



**NEW 2002 GMC K2500 XCAB 4X4**  
9200 GVW, AT, Air, 6.0 V8,  
Work Truck Package, #33366,  
MSRP \$31,370  
SALE **\$28,300**



**2002 GMC SIERRA CREW CAB 4X4**  
Diesel, Allison Auto Air, 6.6  
Duramax, Dually, 11,400 GVW,  
Loaded #7777, Was \$45,800  
SALE **\$40,700**



**2001 GMC YUKON 4x4**  
SLT, Auto Air V8  
#6580  
Was \$36,500  
SALE **\$32,300**



**2001 DODGE 250 250 XCAB 4X4**  
Auto, Air, SLT, Cummins  
Diesel, 11K Miles  
#6616  
Was \$35,500  
SALE **\$31,700**



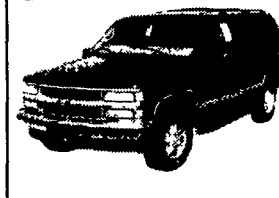
**2000 GMC SONOMA XCAB 4X4 ZR2**  
Auto, Air, V6, Hi-Rider, Black,  
#6626, Was \$18,444  
SALE **\$16,600**



**2000 CHRYSLER TOWN & COUNTRY LXI**  
Auto, Air, V6, Loaded, #6629  
Was \$21,900  
SALE **\$18,875**



**99 GMC SUBURBAN 4X4**  
SLT, Auto, Air, 350, #6645  
Was \$26,800  
SALE **\$24,400**



**99 CHEV TAHOE 4X4**  
LT, Auto, Air, 350, #6644  
Was \$24,800  
SALE **\$21,200**



**99 CHEV K1500 4X4**  
LS, Auto, Air, V8, Shortbed,  
#6622, Was \$21,900  
SALE **\$19,200**



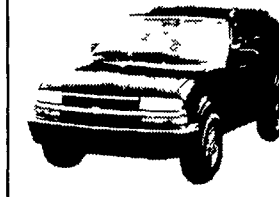
**99 CHEV BLAZER 4X4**  
LS, Auto, Air, V6, #6627,  
Was \$16,900  
SALE **\$14,900**



**98 GMC K15 XCAB 4X4**  
Auto, Air, 4.3 Vortec  
#6604  
Was \$14,900  
SALE **\$11,700**



**98 HONDA CRV**  
Ex, Auto, Air, #6636,  
Was \$13,200  
SALE **\$10,800**



**97 GMC JIMMY 4X4**  
SLT, V6, 4 Dr, Auto, Air  
#6613  
Was \$14,000  
SALE **\$10,500**



**96 FORD F250 XCAB 4X4**  
w/Snow Plow, Auto, Air V8  
XLT #6603  
Was \$14,900  
SALE **\$13,200**



**95 TOYOTA 4 RUNNER 4X4**  
SR5 V6 Auto Air, 66K Miles  
#6619, Was \$13,800  
SALE **\$11,500**



**94 TOYOTA PREVIA AWD MINI VAN**  
Auto, Air, V6 #6550  
Was \$13,800  
SALE **\$8,475**



**93 FORD F150 4X4**  
Air 5 Spd 300.6 Cv  
Black #6666  
Was \$8,900  
SALE **\$5,700**



**90 GMC K15 XCAB 4X4**  
SLT Auto Air 350 #6664  
Was \$13,800  
SALE **\$6,200**

\*All New vehicles include 14 day trial period. Sale Price