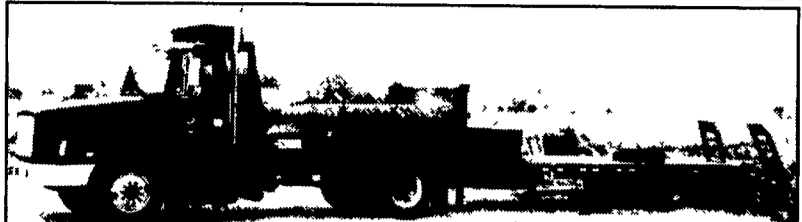


35

TRUCKS AND TRAILERS



91 White GMC 60 Series Detroit, 9 speed fuller trans, 13' Scott bed fold down sides, 32,900 GVW, very good condition

96 Kodiak Trailer, 20,000 GVW, 22' long, air brakes, very good condition (717) 629-4818



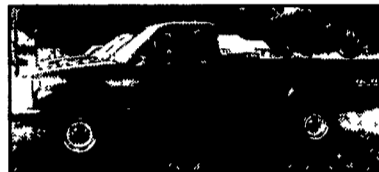
00 CHEVY K3500 EXT-CAB
LS, Dually, 4x4, 454 Vortec AT, A/C, Cass/CD, PW, PDL, Cruise, Tilt, P Seat, 10,000 GVW, 4 10 Ltd Slip Rear, 37,000 Mi, Pewter
\$23,700



00 CHEVY 3500 HD
Cheyenne, 6.5 Turbo Diesel AT, A/C, Cass, Cruise, Tilt, 12' Stake Body 15000 GVW, 20K Mi, White
\$22,900



98 CHEVY K3500 CHEYENNE CREW CAB
4X4, 350 Vortec, AT, A/C, Cruise, Tilt, Cas, PDL, 9200 GVW, 410 Rear, Local Truck, 88,000 Mi, Black & Sandstone
\$23,700
Also '97 Available

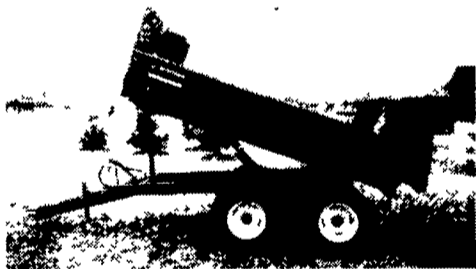


98 CHEVY K2500 SILVERADO
350 Vortec, AT, A/C, PW, PDL, Cruise, Tilt, Cass/CD, 3 73 Ltd Slip, 8600 GVW, Local One Owner, Only 2,200 Mi, Copper Metallic
\$21,500

MARTIN'S AUTO SALES
1025 W. Main St., New Holland, PA 17557
(717) 656-6621

FARM DUMP TRAILERS

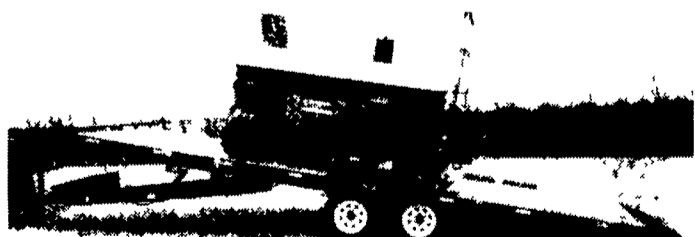
(Direct from the Manufacturer)



6-Ton Dump Trailer
• 10 ft x 7 ft
• Floating Tandem Axle
• 3 ft Front, 3 ft Tailgate & Grain Chute
• 16 in Extendable Sides
• 10 ga Floor & Sides
• 11Lx15 Flotation Tires
• 2-Way 4 in x 24 in Hydraulic Cylinder includes hoses
\$3,200 U.S./delivered

7-Ton Road Dump Trailer

• Fifth wheel or bumper type
• 16 ft x 8 ft deck 3 ft front rack and pockets side & back
• D C hydraulic pump & battery mounted in locking tool box
• 12 ton drop leg jack
• 10 ga floor
• 6x3x3/16 tube main frame
• Sealed beam lighting
• 7000 lbs per axle rating
• Electric brakes on both axle
• 16" tires on white spoked rims
• \$6400 U S delivered in Northeast U S A



Tilt & Load Trailer 10,000 to 14,000 lb. Capacity
Excellent for loading low riding equipment various lengths available.

• D C Hydraulic pump includes deep cycle marine battery mounted in toolbox
• 7000 lb drop leg jack
• 3' channel cross members every 16" centre
• Pressure treated wood floor
• Sealed beam lighting
• Sand blasted, epoxie primed & painted
• 11 degree load angle on 24 ft trailer

BERKELMAN'S WELDING
RR 7, AYLMEER, ONTARIO, CANADA N5H 2R6
(519) 765-4230

East Coast Trailers

Honesdale, PA • 570-729-8870

Pop Up Dove Tail Optional

28' 25,500 lb. gooseneck, 102 wide, standup ramp, dove tail **\$5,750**
24' 14,000 lb. gooseneck, standup ramp, dove tail **\$3,700**
100 Trailers - All Sizes in Stock

1996 Freightliner Classic

500 Cummins with warranty
18 speed transmission
AC — fully loaded
Excellent Condition

Priced to sell
Owner retiring
Call **610-562-3482** anytime

ARMY 6x6 TRUCKS

2 1/2 Ton ★ 5 Ton ★ 10 Ton



M998 Hummers Available
Harvest ★ Spreaders
Feeders ★ Fuel/Water
100% Financing
Lease Plans
(Qualified Buyers)

Dependable and Field Proven

Complete Military Truck Parts Inventory

MEMPHIS EQUIPMENT

766 S. Third St. Memphis, TN 38106 901-774-0600 Fax 901-946-1919
e-mail: memphisequipment@compuserve.com
821 Lincoln Way West Chambersburg, PA 17201 717-263-4194 Fax 717-263-4555
www.memphisequipment.com
THE NATION'S LARGEST ARMY TRUCK DEALER

THE HONDRU EXPERIENCE

OVER 200 TRUCKS AVAILABLE FROM OUR 4 DEALERSHIPS

E-TOWN CHEVROLET

Oldsmobile Pontiac
Route 230 E-Town • 717-361-7776
877-924-6644

00 CHEVY 1 Ton Dually Crew Cab



Auto, LS

99 CHEVY 1500 LT SUBURBAN

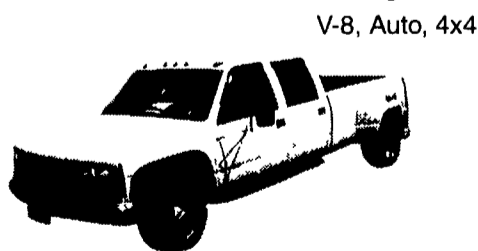


5 7 V8, 4WD, Well Equipped

E-TOWN DODGE

Route 230 E-Town • 717-367-6644
877-924-6644

2000 CHEVY 3500 LS Quad Cab - Dually



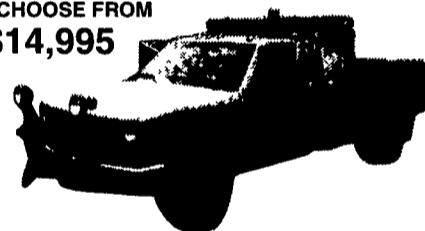
V-8, Auto, 4x4

PHILLIPS FORD

Route 72 Manheim • 717-665-3551
877-597-3551

92 CHEVY CK 3500 DUMP

Diesel, 4WD,
2 TO CHOOSE FROM
\$14,995



97 Ford F250 4x4, Ext Cab w/Utility Body #2F611A
85 Chevy K3500 Flat Bed, Auto, V-8 #2F234A
99 Ford F150 4x4, Reg Cab #2F567A
97 Ford F150 4x4, Reg Cab #2F334A
95 Ford Bronco Eddie Bauer #F736A
92 Ford Aerostar, V-6, Auto, 79,000 Miles #2P107B

MANHEIM CHRYSLER GMC

Route 72 Manheim • 717-665-2473
877-603-2473

92 CHEVY 3500 Dump

4x4, Diesel w/Plow
List \$17,995

Sale \$15,995



	LIST	SALE
01 Chrysler PT Cruiser 2143A	\$18,995	\$16,995
00 Chrysler Town & Country Ltd 2G198A	\$19,995	\$17,995
00 Dodge Ram Conversion 2039A	\$18,995	\$14,995
99 Plymouth Voyager 2M027A	\$15,495	\$13,495
96 Ford Aerostar 2E004B	\$9,995	\$7,995
97 GMC C/K 1500 2G191A	\$18,995	\$14,995
00 GMC Sonoma 2G199A	\$15,995	\$13,995
99 Chevrolet Venture 2M010B	\$16,995	\$12,995
95 Jeep Wrangler 2M019B	\$11,495	\$9,495
00 Jeep Wrangler 2G173A	\$21,995	\$20,495
97 Jeep Grand Cherokee 2G224A	\$14,995	\$12,995
99 GMC Jimmy 2M025A	\$16,995	\$14,995

All prices Include Rebates, Exclude Tax, Tag and \$55 Dock Fee

LOADS OF USED PICKUPS
CALL ANY STORE FOR DETAILS
Visit us @ www.hondruauto.com

OVER 10 CHASSIS IMMEDIATELY AVAILABLE FOR BODY INSTALLATION AT OUR LOCAL BODY COMPANIES!