

**35 TRUCKS AND TRAILERS**

40' Flatbed Trailer, no title, needs tires, \$500. 717-456-7666.

78 Int. tandem dump truck, 290 Cummins, 8LL, alum. 16' bed, high sides. 814-938-3739

Used tractors: 91 Pete Model 378 day cab; 89 Pete model 378, 36" sleeper; 88 Pete model 378 day cab; 85 Pete model 359 day cab; 79 Pete model 352 cab-over. 717/626-2599 ext. 3048

1991 Ford extended mini van, 105,000 mi, dark blue, AT, AC, \$950. LanCo, 717-733-0724.

'66 Pontiac LeMans, runs, good cond, 2-dr, \$3,000. 717-444-2555.

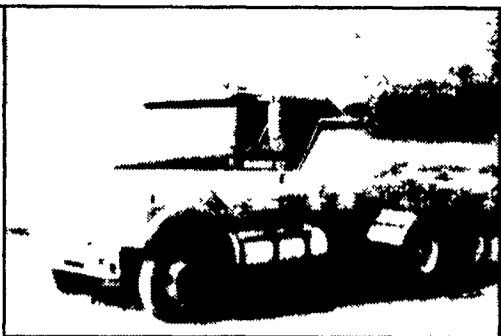
1994 Ford CF7000, C/O, 175hp dsl eng, 6 spd trans, air brakes, 26,000 GVW, w/22' flatbed, \$7,995. Call Bill Martz, 717-755-2911.

Raven 44 ft alum flatbed trailer, spread axle, \$5000. 717-532-9271

'95 L-9000 tractor, w/new 35 ton Fontaine ram lo-boy trailer, both ex cond, \$35,000. 215-269-0900

'95 Ford F450 utility body, 7.3 dsl, 99,000 mi, snow plow, platform for welder behind cab, new tires, ex cond, \$16,000. 215-269-0900

1981 Mack truck w/ Rogers 35 ton detachable lo-boy, both in good cond, 570-769-7603.



1987 White 8V71T Detroit, recent O H, 9 spd, lift axle Needs some TLC \$1,800 717-580-2289

**LEED TRUCK CENTER**

402 South Chiques Rd Salunga Exit, Route 283 **717-898-1200**



1995 FORD E-350, 14 Pass Bus, 460 V8 Gas P/S P/B Ft & Rr A/C 10 000 GVW Dual Wheel Wheelchair Lift Insp Very Clean \$4,900



1999 FORD E-250 CARGO VAN, Triton V6 Gas A/T P/S P/B P/W P/L Cruise Custom Shelves & Cabinets Only 70 000 Miles Insp Like New Call For Details



1983 GMC BRIGADIER, 3208 Cat Diesel 5 & 2 Spd P/S A/B 32 600 C/W 10 Dump Insp Low Miles \$5,900



1988 VOLVO FE6, 6 Cyl Turbo Intercooled Diesel 6 Spd P/S A/B 32 000 GVW 24 Van Body 308 000 Miles Clean Insp \$4,200

1978 Chevy C65 fuel oil truck, 5spd 2spd rear, 2300 gal. tank, new springs, rocker panels, cab corners, inspected, runs & pumps excellent, \$5800. 570-286-5089

1980 Peterbilt, COE, 400 hp Cat motor, 13 spd Road Ranger trans, 4.11 gears in rears, air susp, was inspected, \$1500 OBO or will consider trade for small tractor w/loader bucket. 610-582-4898

'74 Mack Tandem, dump, 14' Cressl body, fair cond. \$6,500/obo; 15/ton Rogers Tagalong Trailer, \$3,500/obo; 35' Grain Trailer, \$2,500/obo; 609-758-6667.

Good farm truck, '72 Chevy, C60, 16' Knaphelde dump grain body, recent overhaul, good tires. 717-667-3873. 1990 Ford Bronco, 4x4, auto, hi miles, \$1,000. 610-932-5270.

7511 Allentown Blvd. Harrisburg, PA 17112

**75 TRUCKS IN STOCK**

**AFFORDABLE CARS AND TRUCKS, INC.**

**717-652-1925**  
FAX 717-652-4888

www.autotrader.com/view/affordable car and truck

**"You Gotta Believe!!"**

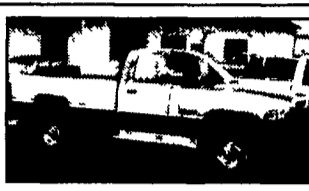
New Exit #72A, Rt. 81 N; Rt. 22 East of Harrisburg; 3 Miles North of Hershey Park



**00 FORD F350 XLT** Crew Cab, 4x4, Longbed, 7.3 Powerstroke, AT, AC, PW, PDL, Stereo CD, Alloys, All Black, 80,000 Mi, Beautiful Truck, As Always Wholesale Priced Here At Affordable **\$24,995**



**94 DODGE RAM 2500** 4x4, Laramie SLT, Cummins Diesel, 5 Spd, AC, PW, PDL, 2 Tone & Many Extras, Only 102K, Looks & Drives Like New! **\$12,995**



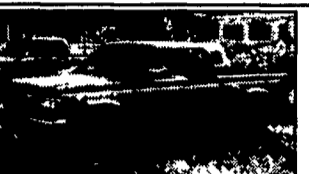
**92 DODGE DAKOTA SLT** 4x4 Ext Cab, 318 V8, AT, AC, PW, PDL, 100,000 Mi, Nice Truck **\$4,500**



**93 FORD F250 H.D. 4X4** Ext Cab, Longbed, 7.3 International DSL, 5 Speed, Nice Looking Truck, Must See, 170K & Well Cared For! **\$7,495**



**93 FORD HI TOP CONVERSION VAN** 'Excalibur' Dual AC, Dual Heat, TV, VCR, V6, AT, Cruise, Tilt, Has Only 50,000 Miles, Must See, Ready To Travel **\$9,600**



**91 FORD F350 XLT 4X4** H D Crew Cab Longbed, 7.3 Turbo Diesel, AT, AC, PW, PDL, Only 80,000 Actual Miles, Well Maintained, 1-Owner Truck, Flawless! **\$11,995**



**00 DODGE 2500 H.D. RAM** 4x4, Quad Cab, 8' Bed, Cummins Turbo Dsl, AT, AC, 100,000 mi, All Burgandy color, Very Clean! **\$19,995**



**95 CHEV SUBURBAN 4X4** Silverado 350 V8, AT, AC, PW, Dual AC, Barn Doors, 3rd Seat, Only 95K, Real Clean Truck **\$11,500**



**93 FORD F250 XLT 4X4** Ext Cab, Longbed, 7.3 Turbo Dsl, 5 Speed, AC, PW, PDL, Stereo, Tilt, Cruise, This Truck Is In Showroom Condition & Must Be Seen & Driven, 100,000 Mi **\$14,000**



**96 FORD F250XL** 4x4, 7.3 Powerstroke DSL, 5 Spd, AC, Has 150K But Looks & Drives Like 50K, Come & See That I'm Correct - I Guarantee It! **\$12,500**



**94 FORD RANGER XLT** 4x4, Ext Cab, 4.0 V6, 5 Spd, AC, PW, PDL, Stereo, 100,000 Mi, Nice Looking Truck! **\$5,500**



**00 DODGE 2500 H.D. RAM** 4x4 Laramie SLT, Quad Cab, 8' Bed, Cummins Turbo Dsl, AT, AC, PW, PDL, Stereo, Loaded, 90,000 mi, All Blue & Very Much Like Showroom Condition **\$22,500**



**95 FORD F250 XLT 4X4** 7.3 Powerstroke Diesel, Longbed, AT, AC, PW, PDL, Stereo, All Orig Paint, Perfect Condition, 120K **\$14,995**



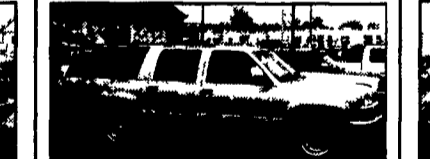
**96 DODGE RAM 2500 4X4** Laramie SLT, Ext Longbed, Cummins Turbo DSL, AT, AC, PW, Stereo, Dk Green, Looks Like 80K, Has 202K Maintained Highway Miles, Priced To Steal! **\$12,500**



**91 FORD F350 XLT 4X4** H D Crew Cab Longbed, 7.3 Turbo Diesel, AT, AC, PW, PDL, Only 80,000 Actual Miles, Well Maintained, 1-Owner Truck, Flawless! **\$11,995**



**94 FORD F250 XLT** Ext Longbed, 2 Tone Green, 7.3 Turbo Dsl, AT, AC, PW, PDL, 100,000 Mi, Looks Like New! **\$11,995**



**96 CHEV 2500 4X4 SLT SILVERADO SUBURBAN** 6.5 Turbo Diesel, 3rd Seat, Barn Doors, Dual AC & Heat, 107K, Like New, 1-Owner **\$15,500**



**98 FORD F350 SUPREME** 16' Box Truck, 5.4 Triton Motor, AT, AC, Stereo, Roll Up Door & Plank, Tow Package, 100,000 Mi, All Maintenance Records Perfect Shape! **\$10,995**



**96 DODGE RAM 2500 4X4** Laramie SLT, Ext Longbed, Cummins Turbo DSL, AT, AC, PW, PDL, Dk Green, Only 80,000 Mi, Very Nice Truck **\$17,995**



**96 FORD F250 XL** 4x4, Ext Cab, Longbed, 7.3 Powerstroke Dsl, 5-Speed, AC, Cloth Seat, Looks & Drives Like 70K, Does Have 170K All Highway Light Pull, Must See & Drive! **\$14,500**



**96 FORD F250 XLT** 4x4 Crew Cab, Short Box, 7.3 Power Stroke, AT, A/C, PW, PDL, Stereo, Alloys & More, Only 81K, Real Clean Truck **\$18,500**



**94 FORD F150 XLT** 4x4 Ext Cab, Shortbed, V8, AT, AC, PW, PDL, Stereo, Real Sharp Truck, Only 90K **\$7,995**



**97 DODGE RAM 2500 4X4** Laramie SLT, Ext Longbed Cummins Turbo DSL, 5-Spd., AC, PW, PDL, Stereo, Red, Only 90,000 Mi, Like New! **\$19,500**



**95 FORD F250 XLT 4X4** H D Ext Longbed, 5.8 V8, 5-Spd, AC, PW, PDL, Stereo, Expensive Color Keyed Leer Cap, 100,000 Mi, Very Beautiful Truck, Ready To Tow! **\$10,500**

**ALL PRO** Truck & Trailer Parts & Accessories Distributor

7760 Allentown Blvd Harrisburg 717-671-9115  
6250 Carlisle Pike Mechanicsburg 717-795-9116  
Truck Repairs - Order 800-622-7003

Trailer Financing Available or

HOURS: Mon Tues Wed & Fri 8-5 Thurs 8-8, Sat 8-2

**A.R.E. TRUCK CAP & LIDS • TRUCK ACCESSORIES**

**DUAL PORT SYSTEM**  
"Futuristic Receivers For Today's Vehicles"

- Dual Accessory Ports & Receiver In One Hitch
- Numerous DPS™ Accessories Increase Vehicle Capacity, Flexibility and Versatility
- DPS Improves Accessory Stability

**DRAW-TITE 2002** towing products custom vehicle accessories www.draw-tite.com

**TRAILER PARTS & ACCESSORIES • TRAILER INSPECTION & SERVICE**

**MGS CAN MATCH THE TRAILER TO THE JOB!**

TRAILER • PARTS, SERVICE, INSPECTION, HITCHES INSTALLED, BRAKE CONTROL INST.

Hours Mon. Thru Fri. 8-5 Sat. 8-12

178 MUDDY CREEK CHURCH ROAD, DENVER, PA 17517-9386  
(717) 336-7528 • FAX (717) 336-4655  
800-952-4228  
Website: www.mgsincorporated.com