

# 1A CONSTRUCTION EQUIPMENT

D2 Pony motor, straight blade, older machine. 610-262-0644

'84 JD 340D skidder, tires 90%, 3900 hrs, very nice, \$27,500. 570-689-4042

BACKHOE Case 580 Super E, 4x4, good cond, \$14,000. 410-745-6423.

95 JD 510D backhoe w/ cab, 4WD, ext. hoe, 5300 hrs, \$32,000 OBO. 717-284-0303, 717-786-2275

1996 Cat 416B backhoe, cab, 4wd, new tires, dealer maintained, great cond., \$31,000. 610-458-7756

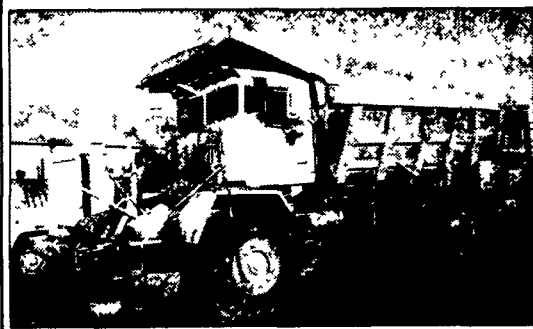


**\$19,900**  
**JD 555 Crawler Loader, 382 Hours On New Engine, OROPS, 1 1/4 Yd General Purpose Bucket, 70% Undercarriage, Total Machine Hours 4042, New Loader Pump, 8 Extra Track Roller (new).**

Berks County **610/944-6833**

## Heavy Equipment Loader Parts

Rt 22 Grantville PA (717)469-0039

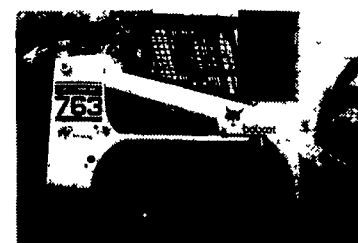


Bucld R30 End Dump (BV71 DET Needs Rebuild) \*3500 OBO



1985 FL5 Loader and backhoe, 1400 hrs, good condition \$24,000  
**570/345-8426 Sch. Cty.**

### 100% Financing w/Good Credit at 8% or less Int. in PA



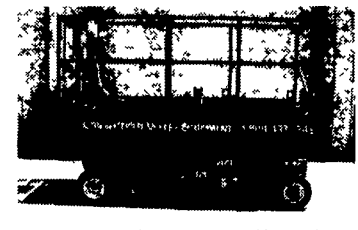
2000 Bobcat 763, 400 Hrs. .... \$13,500



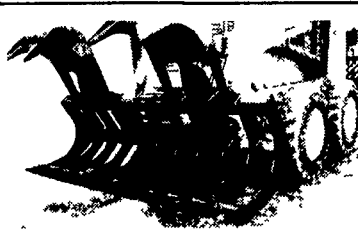
1999 NH 565, 1200 Hrs. .... \$11,500



JCB Tractor Loader Backhoe, 217, 4WD, Cab, Ext. Hoe \$24,500



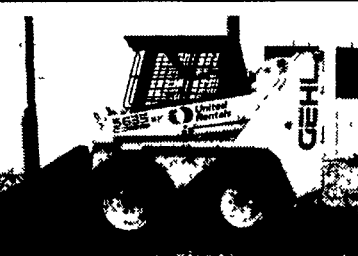
Mec 40' Electric Scissor Lift, 3' Ext., 488 Hrs. \$4,200



84" Root Grapple, New \$2,200



1986 Cat 953, Good bottom, LGP, with Root Rake \$37,000



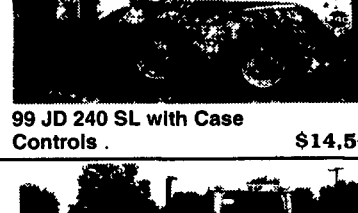
1997 Gehl Skid Loader, Model 5635, 14" Rubber, 900 Hrs. \$13,500



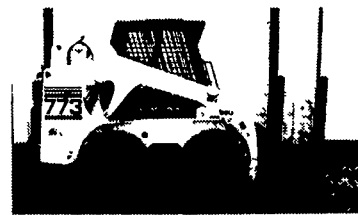
JD 544E, 1990, 7200 Hrs .. \$32,000



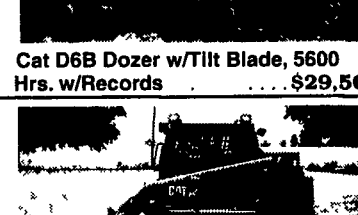
90 JD 744E Wheel Loader, New Paint, Runs Nice \$39,000



99 JD 240 SL with Case Controls \$14,500



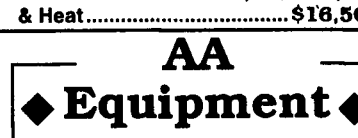
2001 Bobcat 773 w/350 Hrs. \$15,500



Cat D6B Dozer w/Tilt Blade, 5600 Hrs. w/Records \$29,500



966D Cat Wheel Loader, New Rear Rubber \$42,000



96 Cat 226 Skid Loader, 600 Hrs., Cab & Heat \$16,500

New 48" Pallet Forks. .... \$550

95 JD 455G Crawler Loader, 2200 Hrs, New Paint \$29,500

**AA Equipment**  
**717/529-2512**  
No Sunday Calls

1797 Robert Fulton Hwy., Quarryville, PA 17566

• We Buy & Sell •  
Financing Available



97 Cat 315L, 35,000 lbs, 6,500 Hrs \$52,500

96 Cat 315L, 6800 hrs, JRB Quick Coupler \$52,500



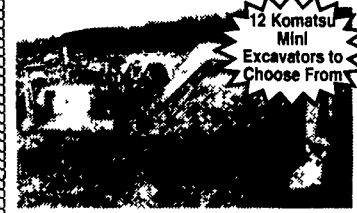
89 Cat 426, Cab, 4x4, Ext. Hoe \$14,900

**NEW ARRIVALS:**

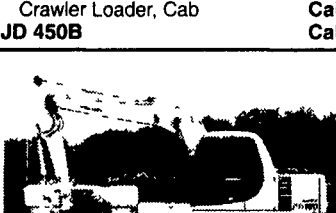
95 Komatsu PC200LC-6 Call

88 JD 455G, Crawler Loader, Cab Call

JD 450B Call

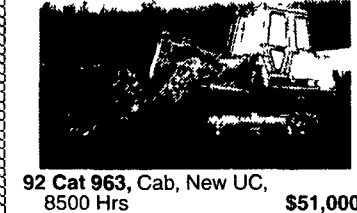


92 Komatsu PC 20, Rubber Tracks, Backfill Blade, 3600 Hrs \$10,500

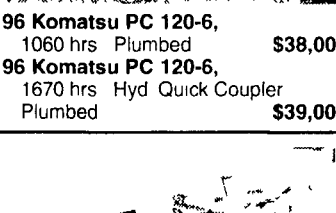


96 Komatsu PC 120-6, 1060 hrs Plumbed \$38,000

96 Komatsu PC 120-6, 1670 hrs Hyd Quick Coupler Plumbed \$39,000



92 Cat 963, Cab, New UC, 8500 Hrs \$51,000



97 Ingersoll Rand VR60B, Telescopic Forklift, 3200 Hrs, 35' Reach 6000 lb Lift, \$29,500



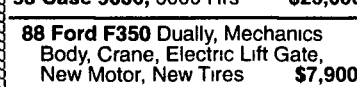
93 Komatsu PC150, 35,000 lb Excavator, 5700 Hrs \$34,000

91 Komatsu PC150LC \$29,000

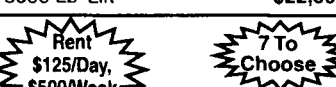
93 Case 9030, 6000 Hrs \$25,000



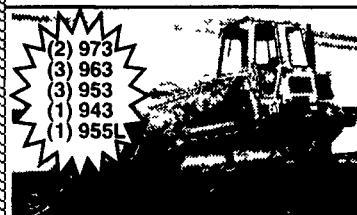
89 Lull 844B, 8000 Lb Lift \$22,500



88 Ford F350 Dually, Mechanics Body, Crane, Electric Lift Gate, New Motor, New Tires \$7,900



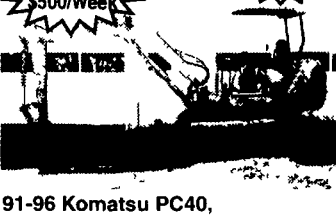
91-96 Komatsu PC40, \$11,000 to \$16,500



87 Cat 963, Cab, 4-in-1 Bucket, 90% Cat U C \$42,500

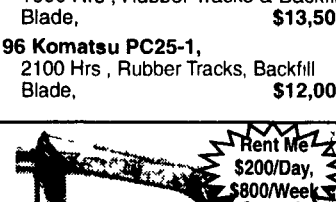
87 Cat 963, Open ROPS, New Tracks \$35,000

JD 755, 2 To Choose From Starting at \$15,000



95 Komatsu PC30, Rubber Tracks & Backfill Blade, 2 to choose \$12,500

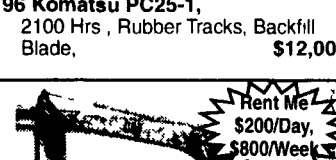
96 Komatsu PC 27R-8, 1600 Hrs, Rubber Tracks & Backfill Blade, \$13,500



96 Komatsu PC25-1, 2100 Hrs, Rubber Tracks, Backfill Blade, \$12,000



89 Cat 973, VG UC, Cab, New Paint \$42,500

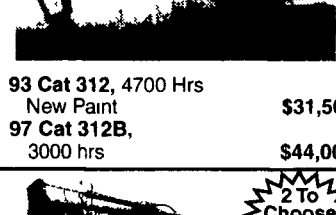


93 Cat 312, 4700 Hrs New Paint \$31,500

97 Cat 312B, 3000 hrs \$44,000



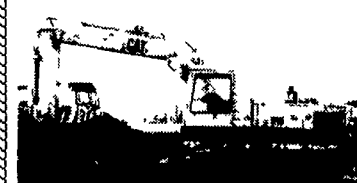
96 Cat 311, 1970 hrs \$31,000



90 Hitachi EX120-2, 6700 Hrs \$23,500

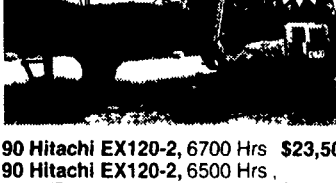
90 Hitachi EX120-2, 6500 Hrs, w/Plumbing \$23,500

91 Hitachi EX100 \$22,500

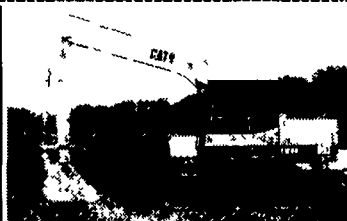


Cat 215, 8' Wide, Nice Condition \$18,500

89 Komatsu PC200, 7630 Hrs, Runs & Operates Good \$18,500

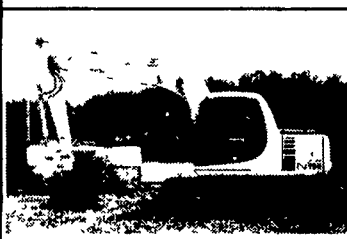


90 Case 621, Good Tires, New Paint, 4790 Hrs \$27,500

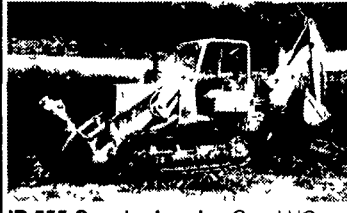


90 Cat E120B, 5400 Hrs, New Paint \$22,500

89 Cat E120B, 7400 Hrs, New Paint \$21,000



2000 Case 580 Super L, Cab, 4x4, Ext. Hoe, 1950 Hrs \$37,800



JD 555 Crawler Loader, Good UC Backhoe Attachment \$16,500

79 Cat 955L, 13X Series \$19,500

Cat 951B, Very Good UC, No Rops \$9,500



96 Case 1840, 2000 hrs \$9,800

93 Case 1840, 3000 hrs \$7,900

98 NH LX885, Bucket & Forks \$12,900

99 Case 1838, 70 Hrs Good Condition \$12,500



94 Cat 953B, Cab, New UC, 8100 Hrs \$65,000

86 Cat 953, Cab, 80% UC \$36,000

85 Cat 943, Open ROPS, 80% UC \$29,000



89 Cat 926E, Municipal Machine Quick Coupler \$29,000

Hyster 830A, 66" Smooth Drum Roller, Cummins Dsl \$15,000

Coleman Light Tower, Kubota Dsl \$3,500

Ingersoll Rand Light Tower, Deutz Diesel \$3,500

95 American Eagle A716, 6000 Lb Straight Mast Forklift..\$15,500

GMC Lube Truck, 7 Tanks & Reels w/Air Compressor \$13,500

**Rentals Available**  
Day, Week, or Month

Financing and Lease  
Purchase Available  
No Sunday Calls

## Weaco Equipment

645 Swamp Church Rd.  
**717/336-7375**

Reinholds, PA  
**877/529-9328**