

FARM EQUIPMENT

Int'l Tractor 240, rebuilt motor, painted, runs good w/5' Bushhog mower. 610-268-2220.

NH 300 self propelled 12' Haybine, never used, 2yr/s, \$38,000. No Sun Calls, 717-597-5623.

Case IH 7140, 4wd, duals, weights, good, rebuilt tractor, \$23,900. 717-867-4896.

3pt NH 254 rake tedder combination, \$850. Ford 4000 gas, WF, flat deck, 3pt, live PTO, 3800 hrs, \$4200. 717-534-1253

'91 4wd Case IH 685 w/ CIH 2255 hydr loader, canopy, 2500 1-owner hrs, \$16,500. Hesston 4570 square baler w/thrower, ex shape \$7950. NH 258 dolly rake, like new, 1 yr old, \$3250. 315-964-1161

JD 4230D WF w/cab, fixer upper, \$9,500. 717-337-0372.

TO-30 Ferguson, good condition, \$2500. Milflin Co. 717-543-5592

NH 495 Haybine, shed kept, field ready, \$1,500. 540-854-7760.

Woods 3180 15' batwing mower, VG, \$5900; Woods 315 15' batwing, \$3950; JD 1508 15' batwing, new gear box, \$4850. Zetsloff Eq. 800-919-3322

Kubota B4200 ldr, belly mower, 250 hrs, 4WD, \$6,000 OBO. 610-856-5120.

FARM EQUIPMENT

TRACTORS

MF 4270 4WD 12x12 shuttle trans 110HP 1998 w/1000 hrs
MF 398 8 hp turbo w/creeper trans
MF 298 new tires & paint nice
MF 383 8 spd wet brakes 65 hp
MF 261 w/roll bar & canopy 1995 nice cond
MF 175 dsl runs nice
MF 165 dsl new paint w/ quick tach MF ldr
MF 165 dsl 8 spd new paint & tires
MF 165 dsl tractor good rubber
MF 35 gas w/ power steering & ldr

LOADERS

MF 832 quick tach ldr to fit 360 or 362 tractor
(2) MF 232 quick tach to fit 135 or 230
Woods 215 quick tach to fit 283 **SOLD**

EQUIPMENT

Brillion 14 ft cultmulcher
IH 540 manure spreader
MF 880 4x18 spring reset plow
MF 2& 3 bottom plows
MF 2 row corn planter
King cutter 6 finish mower
MF No 31 & 41 3pt sickle bar mower 6 & 7 ft
Brillion & JD cultpackers
8 10 12 14 & 16 ft & diff sizes
New farm gates & hay feeders



Large selection of used MF Tractor Parts

20 30 35 40 50 65 85 90 135 150 165 175 178 180
205x4 265 270 283 285 383 390T 399 1020 1080
1085 1100 1130 1105 1135 1150, 1155 2675 2705
2745 2775 2805 3060 3090 3545, 3660 3680 MH Pony
22 30 44 101 Jr Balers 3 12 & 124 MF 50 HX 4WD

We Stock New MF Water Pumps Power Steering Pumps
Hyd Pumps Clutches Spindles Rebuilt Starters
Seats Filters & Many Other New Items

Recent Arrivals For Parts

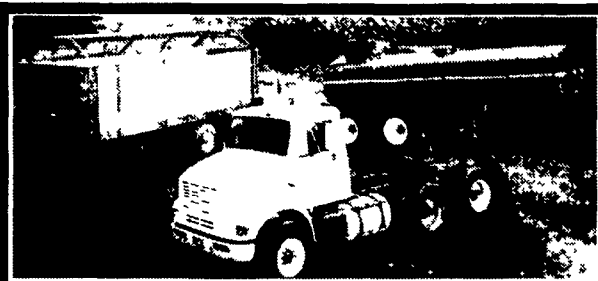
MF 175 1150 3060 1085 65 2675 2705, 1105 235 1135

Used Brillion & JD Cultipacker & Cultmulcher parts

NOLT'S EQUIPMENT

403 Centerville Rd Newville PA 17241
off 81 exit 37 2 miles N on 233

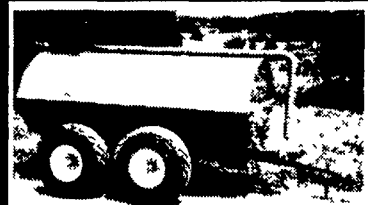
(717) 776-6242 No Sunday Calls
No Out-Of-State Personal Checks We Ship UPS



Call About Our Trailer System
26' Forage Box - 6300 Gal. Tanker



Tank Rebuilding



New Pull Type 23.1x26 Tires
\$12,000



Flotation Tires Budd And Spoke Application



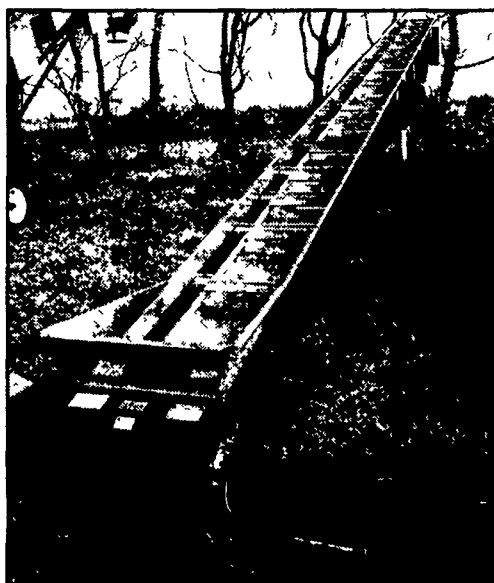
Generation II Custom Truck Tanker

Diller Equipment

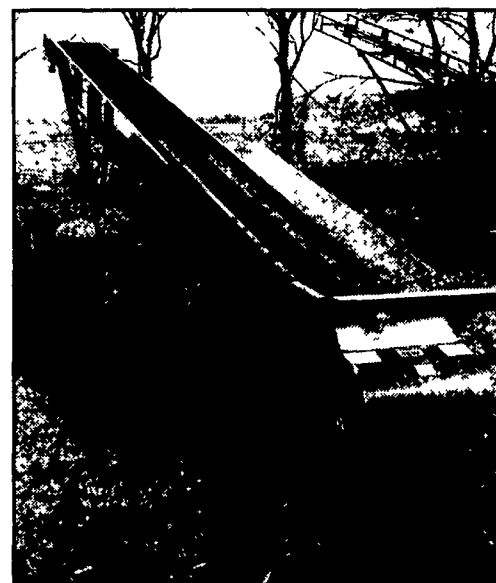
Chambersburg, PA 814-629-7338 - 800-640-4448
Pickup & Delivery

ELEVATORS

Well Balanced, Ruggedly Built For Many Years Of Trouble Free Service



Hay & Corn Elevator with Heavy Duty Chain and Sturdy Paddles



Conveyor with Durable Belt for Loose Material - Mulch, Sawdust, Poultry Litter, etc.

ZIMMERMAN
MANUFACTURING LLC

125 KING COURT • NEW HOLLAND, PA 17557-9212
717-354-9611 • Toll Free (877) 456-7126

Contact Us For Literature Or The Dealer Nearest You!

Leaman Tractor & Parts Inc.

329 Brenneman Rd., Willow Street, PA 17584 (Lancaster Co.)
email: ltparts@ptd.net
717-464-2874 Fax 717-464-4130

Turn Left on Brenneman Rd. from 222 S at Refton

DEALER INQUIRIES WELCOMED

We Now Accept

TORQUE AMPLIFIERS & CLUTCHES

- ★ 5 Year Warranty (Complete Unit)
- ★ Heavy Duty Sprag
- ★ Price \$695.00 Exchange

Center Housing Special
\$100 Flat Rate Labor Charge on 1/A Installation. Bring Your Center Housing For Same Day Repair. Call Ahead. Appointment Recommended

NEW PARTS

- ★ Engine Overhaul Kits for most brands in-frame & complete out of frame kits. Excellent prices from quality suppliers
- ★ Rebuilt fuel pumps - most brands, comes with 2 year warranty
- ★ Turbo Chargers (new & rebuilt)
- ★ New radiators & accessories for most Ag tractors, excellent quality
- ★ New manifolds for most brands

USED TRACTORS - MOST SOLD WITH WARRANTY

- '96 Case IH 7210, MFD w/creeper, Very Nice Cond 18x42 Tires w/Duals
- '96 Case IH 5230, MFD, ROPS, Power Shift, 18x38 Tires, Good Cond
- '93 Case IH 5120, 2WD, 2 post ROPS synco trans, 2600 hrs
- IH 1066 w/cab, 18x38 tires, good running cond., very bright 1975 model, fresh T/A
- IH 756D, WFE, 2 pt., nice orig cond New T/A
- Set of 18x42 Duals
- Power Units: JD 6059T
- Cat 3126, 600 hrs., complete 225 hp
- 2001 JD, 12.5L w/3 Total Hrs, Included radiator and right angle gear box, 1000 RPM, output & hyd clutch
- IH 10-310

Call Us For Your Used Parts Needs
SPECIALIZING IN IH BUT HAVE OTHERS

CFS has \$ Super Incentives on New Idea Hay Tools!
(Models 5209, 5212 & Self Propelled 5850)
Also, on New Idea 4854 Balers!

- Grimm hay tedder
 - Century 200 gal sprayer w/bean pump
 - Grove forage wagon
 - NH Super 717 harvester, 2RW corn head
 - Brillion 12 ft cultipacker w/transport
 - IH 37 10 ft disc
 - MF 13 42 ft rigid grain head
- 610-944-8925



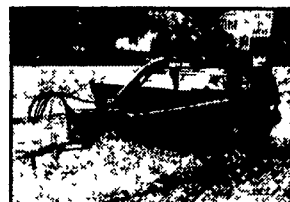
New Idea 5209
Disc Mower Conditioner
93 inch Cut, 540 PTO

Additional Equipment For Sale at CFS

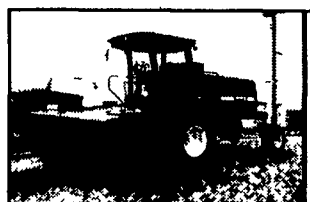
- 5212 Mower Cond., 540 PTO
 - 522 7' Sickle, 3 pt. Mower
 - 4210 10' Tedder, PTO
 - 5408 3 pt. Disc Mower
 - 4450 11' Colter Chisel Plow
 - CP40 14'3" Transport Packer
- F.O.B. No Trades. Call for Special Cash Prices!



New Idea 5850
Self-Propelled Disc Windrower
15' 3" Cut



New Idea 4854
4x5 Round Baler
Net Wrap & Twine Tie
Demo Unit!



New Idea 5407
3 Point Disc Mower
6' 8" Cut

Massey Ferguson 1235
\$12,499
0% to Qualified Buyers
(717) 445-4541
www.icequip.com

Chambersburg Farm Service

717-264-3533 or 800-447-6830

Carlisle Farm Service

717-243-4419 or 800-447-6829

