

Public Auction Register

Closing Date Monday 5:00 P.M.
of each week's publication

**Internet Sale Register will be updated
by Friday at 12 Noon**

ATTENTION AUCTIONEERS

All sales register info needs complete address,
street, town, county & state.

FRI JULY 12 - 1PM State Graded Feeder Pig Sales, Carlisle Livestock Market Inc. Exit 44 off I-81 turn S then left onto Alexander Spring Rd 717-249-4511

FRI JULY 12 - 7PM Dairy Sale Middleburg Livestock Auction Sales, Inc PO Box 185, Middleburg, Pa Clarence Shirk and John Shirk, owners 717-656-8793

SAT JULY 13 - 9 AM Wagonland Barn 28th Annual Carriage Auction Bernardstown, Ma Horse and farming related, horse and driving accessories Phil Jacquier, Inc 413-569-6421

TUES JULY 16 10 AM Farm equip, shop items, 3709 N Colebrook Rd, Manheim, Pa for Duane E Lehman Jim Hershey AU2479L 717-665-7284

WED JULY 17 & THURS JULY 18 -Manon Auction Service, 5174 Horst Road, Chambersburg, Pa 717-375-4700

FRI JULY 19 - 6PM Horse Sale New Holland Sales Stables Inc 101 W Fulton St, New Holland, Pa

FRI JULY 19 - 7PM Horse and Tack Sale Red Carpet Horse Company At Carlisle Livestock Exit 44 off I-81 turn South then left onto Alexander Spring Rd Chrs 814-886-5228, Kevin 814-886-4864

SAT JULY 20 - 11AM Holstein and Angus cattle, barn equipment & farm machinery, John & Beth Forenz, Jasper (Steuben Co), New York, Purrung Auct, Inc 585-728-2520

TUES JULY 23 - 8AM Special Fed Cattle Sales Earlybird pens close at 2 PM Exit 44 off I-81 turn south then left onto Alexander Spring Rd 717-249-4511

TUES JULY 23 - 9AM Quilt, craft & buggy A&C Dffenbach Auct inc AU2258L

WED JULY 24 - Farm Equipment 109 N Maple Ave, Leola, Pa Wolgemuth Auction #21357 717-656-2947

FRI JULY 26 - 1PM State Graded Feeder Pig Sales, Carlisle Livestock Market Inc Exit 44 off I-81 turn S then left onto Alexander Spring Rd 717-249-4511

SAT JULY 27 - Horse Sale 11AM Middleburg Livestock Auction Sales, Inc PO Box 185, Middleburg, Pa Clarence Shirk and John Shirk, owners 717-656-8793

SAT JULY 27 - 10AM Passenger vehicles, trucks, construction & farm machinery 1450 New York Ave, Wilmington DE 302-573-5005 Nationwide Auction Sys

AUGUST

SAT AUG 3 - 9AM Horse Sale Mel's Stables 834 Wallace Rd, New Holland, Pa 717-354-8397

SAT AUG 3 - 10AM Tee Zee Farm The Estate of Tom Zigmont, Hatfield, Mass, Vegetable Farm Complete Dispersal Purrung Aucts WYand, NY

TUES AUG 6 - 8AM Special Fed Cattle Sales Earlybird pens close at 2 PM Exit 44 off I-81 turn south then left onto Alexander Spring Rd 717-249-4511

TUES AUG 6 - 7:30 PM Feeder Cattle Sale Carlisle Livestock Market Inc Exit 44 off I-81, turn south then left onto Alexander Spring Rd 717-249-4511

WED AUG 7 - Lumber & Building Supplies 109 N Maple Ave, Leola, Pa Wolgemuth Auction #21357 717-656-2947

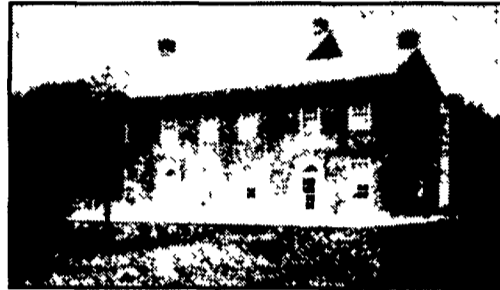
PUBLIC AUCTION

35 ACRE FARM - Antiques - Collectibles - Riding Mower
SAT., JUNE 15, 2002
At 9:00 AM

Real Estate at 12:00 Noon

15 Coon Creek Rd., Palmyra, PA 17078
East Hanover Township - Lebanon County
Directions: From Rt. 72 in Jonestown, take Rt. 22 West, 7 miles to Coon Creek Rd., turn South on Coon Creek Rd. (see sign), 1/4 mile to farm on left.

REAL ESTATE: 2-1/2 Story brick & frame colonial farm house with: tin roof, lg. cement front porch w/railing, enclosed back porch, old bank barn which needs to be razed, old cement foundation from old chicken house, 35 acres of farm & woodland, woodland good for outdoorsmen or hunter, Raccoon Creek flows through property, good for fishing. Zoning agricultural, good for horses.



Home containing: First floor: Lg. eat in pine kitchen, by "Repperts", formal dining room, lg. living room w/working fireplace, study w/fireplace, enclosed rear porch. Second floor: 4 Bedrooms (1 w/fireplace), full bath w/tub/shower, dressing room. Half story attic/storage. Partial basement w/outside entrance, laundry hookup, Weil McLam oil hot water heating system, two 275 gallon oil tanks, 125 amp electric, private septic, private well w/submersible water pump. Food by Zoar Lutheran Church, youth group. Listing of personal property at a later date. Terms of auction 10% down payment day of auction & full settlement within 60 days.

To inspect Real Estate, phone daughters Tillie Phillipy, phone 717-866-7868 & Edna Jenkins, phone 717-865-3413 OR Auctioneer 717-272-7078.

CONDITIONS BY: MARION A. HECK

Kleinfelter's Auction Service
105 Chapel St., Lebanon, PA 17046
717-272-7078 License #AU-2057-L

M. Jannifer Weiss, Attorney

JAMES GIBSON FARM AUCTION

J.D. TRACTORS-HAY-GRAIN-POTATOES-IRRIGATION

SATURDAY, JUNE 8, 2002 10 A.M.
WAYLAND/NORTH COHOCTON, NEW YORK
(STEBEN COUNTY)

Sale to be held at the farm on Garlinghouse/Rowe Road (County Rte 38) 1/2 mile north off State Route 21, 1 mile south of North Cohocton, 6 miles north of Wayland. (Use I-390 Exit #3 Wayland or I-390 Exit #2 Cohocton/Naples.)

Discontinuing farming selling will be a very well kept line of owner operator housed machinery nearly all purchased new by Jim and his dad the late Clarence Gibon

Four (4) Beautiful John Deere Tractors: Original owner J.D. 630 wide front, factory 3 pt. hitch, front weights, purchased at Atlanta hardware, rebuilt engine 2001; New J.D. 5210 2WD, open station, just 155 hrs., 13.6x28 tires, 2 hyd. remotes, Sync shuttle trans.; J.D. 2950 2WD, open station, 6526 hrs., rabbit/turtle, 2 remotes, 16.9x38 tires; J.D. 4030 2WD, ROPS with enclosure, 4512 hrs., 18.4x34 tires, 2 remotes, Sync trans.

Trucks: Nice 1993 Ford F-600 truck, 65,000 miles, 7 L. gas engine, 8:25 front and 9:00 rear tires, 5/2 trans., 14 ft. Todco van body; 1977 GMC s/a, 5/2 trans., 14 ft. dump; 1967 Ford s/a, 5/2 trans, with aux., 14 ft. McConnell bulk body with grain pan; 14 ft. truck bed; McConnell 14 ft. bulk body on Ziggy tandem axle trailer.

Hay-Grain-General Purpose Line: (It's Nice!!) J.D. 3 pt 2-row corn planter; J.D. 8200 14x7 grain only drill with grass seeder; J.D. 14T conventional baler; N.H. 489 haybine; J.D. rollbar rake; Fahr 4 star rake/teeder; J.D. #5 moweg; 3 pt. 5 ft. rotary mower; Farmhand bale buncher, 12 ft. skeleton elevator; 26 ft. transport bale/grain elevator; Baltic 3 pt. fert. spreader; I.H. 540 single beater manure spreader; A.C. 2000 series 4-b.x16 in. semi-nt. plow with buster bar; Pittsburg 12 ft. field cultivator with buster bar; McConnell 12 ft. cultipacker; J.D. 2-row tool bar; Three (3) sets of Ford 3 pt. 2-row cultivators; Ford 3 pt. scraper blade; Two (2) 2-row weeder; Snow plow blade; Two (2) farm trailers; Lockwood hopper type stone picker.

Irrigation: Rain Master 4x4 p.t.o. pump; App. 100 pcs. 5 in. x 20 ft. Race and Race hook and latch pipe.

Potato Equipment (It's Nice!!): J.D. 216 planter; J.D. 30 level bed 2-row digger with new beds; Olsen rotobearer; Iron Age 300 gal. wooden tank sprayer; Diltz Wetzel seed cutter and duster; Dahلمان conventional 2-row potato harvester with hook and link chain; Haines 16 ft. x 3 ft. dirt eliminating elevator; 2001 Tew 16 in. vegetable washer; Haines 16 in. chain sizer; Haines 16 in. roller table; 20 in roller table; New Long hand sewer; Three (3) sets of platform scales; Boggs 24 in. grader; Tew 10 ft. x 18 in. belt conveyor; Two (2) Singer 18 ft. x 16 in. belt conveyors; Boggs flat belt elevator; 50 ft. x 20 in. flat belt conveyor on wheels.

NOTE: This is a very nice lineup of small farm machinery purchased new, housed and well cared for the old fashioned way! Few Miscellaneous items please arrive on time!

Owned By Mr. and Mrs. James Gibson

For Info on items selling call Jim 585-534-5139

Also Selling For Austin Dyckman Farms, Inc.: The best McConnell Utah 445 2-row harvester, hyd. driven, new primary and secondary hook link chain, new spades, shed kept and right ready for harvest!!; J.D. 30 level bed digger with steering; Navigator II tracking guidance system for 3 pt cultivator or planter; Glencoe 3 pt. 7 ft. field cultivator with danish teeth; Two (2) Maine style 2-row tool bar hillers; Set of J.D. FM "new style" 4-row (wide) cultivators (or 6 row narrow) with danish teeth; Meyers 100 gal. 3 pt. sprayer; 200 gal. poly nurse tank; I.H. 56 4-row corn planter; Gandy 3 pt. 12 ft. hyd. driven fertilizer applicator; Unicorn 3 pt. wood splitter; Two (2) 16 in. x 16 ft. rubber belt conveyors; Haines 24 in. x 9 ft. dirt eliminating conveyor; Haines 16 in x 20 ft. flighted belt conveyor on scissor legs.

For Info on These Items Selling Call Joe Dyckman 585-534-5434

Sale site is just 15 miles north of Haines Equipment at Avoca, New York and is right next door to Scott and Jane Young of Young Potato Equipment Sales for an added convenience! Lunch and comfort facility on site.

TERMS: CASH. Honorable checks from known persons in good standing for immediate removal; otherwise leave items until check clears or is otherwise verified. Acceptable I.D. required for bidders card.

Auction Conducted by
James P. Purrung and Associates
PIRRUNG AUCTIONEERS, INC.

P.O. Box 607 Wayland, New York 14572
Phone: 585-728-2520 Fax: 585-728-3378

2 AUCTION SALES

SEALED BID SALE

PRESS BRAKE, POWER SHEAR, BENDING ROLL, IRONWORKER
BAND SAW, AIR COMPRESSOR, WELDERS, FORKLIFT, PLASMA CUTTER, OFFICE FURNITURE
ERPEL DESIGN CORPORATION

305. W. WASHINGTON ST. - ALLENTOWN, PA.

BID DEADLINE: TUESDAY, JUNE 11 - 11 A.M.

Wysong & Miles Press Brake M/N MTH175 144, 175 Ton Cap Wylong & Miles Power Shear M/N HF-3810, Bertsch & Co Plate Bending Roll M/N M 9550, Ficep Iron Worker M/N ST/Super, Horizontal Metal Cutting Band Saw w/Coolant System, Esab Plasma Cutter M/N PCM-873, (4) Miller Welders, Model #S, 302, 320A & 452, Quincy Rotary Screw Air Dryer, M/N QST25A312F, Ultra Air Products Refrigerated Air Dryer, M/N UA250AC, Hyster Propane Forklift 8,000 lb Cap. Plant Equipment consisting of Welding & Grinding Tables, Propane Space Heaters, Office Furniture consisting of Desks, Chairs, Tables Bookcases, Divider Panels, Drafting Table, Cybermax, Xperts, Byte Computer Systems w/Printer, Xerox 5320 Copier, Toshiba TF551 Fax Machine

INSPECTION MONDAY JUNE 10 10 A.M. 3 PM
TERMS CASH OR CERTIFIED FUNDS
BID KITS & PICTURES AVAILABLE ON OUR WEBSITE
BIDS MAY BE MAILED TO OUR OFFICE!

GRINDING MACHINERY

TOOLING, PRECISION INSTRUMENTS
THURSDAY, JUNE 13 - 10 A.M.
ASSOCIATED TECHNOLOGIES, INC.

9988 GANTRY RD.
PHILADELPHIA, PA.

18. O.D. & I.D. GRINDERS

6-72A Heald 1 D Grinders with Auto Cross Sliding Head, Spark Out Timer & Attachments, Brown & Sharpe O D Grinder, 5 No 1-Ton & Harvill Johnson Carbide Grinders, Heald 271 Tool Room Grinder, Auto Cycle O D Grinder, Drill Presses, J & L Precision Finishing Lathe, Sheffield 109 Crush Grinder, Heald 75 1 D Grinder with Auto Cross Slide and Spark Out Timer, Waino CNC Lathe G.D. ster 4000RPM 5T CNC Controls, RUD B00 10"x24" O D Grinder, Greenby Grinder, LF 800G 10"x24" O D Grinder, Punch Grinder, L & R Monar-matic Ultrasonic Cleaning Machine

TOOLING, PRECISION INSTRUMENTS

3/4" Hex Broach, Micrometers, Plug Gages, Arbors, Draw Bars, Collets, Air Wheel Dresser, Tapping Heads, Solid Carbide Mill, Precision Parallel Set, Counter Sinks, Boring Heads, Vises, Drill Chucks, V Blocks, Stamps, Taper Shanks, I D Gages, Check Gages Valves, Carbide Inserts and Rounds, Wrenches, Positioning Indicator Levels, (5) Sony Digital Readout Units, Arnold Gages, Diamond Wheels, (5) Gages, Analog Gages Grinding Mandrels, Spindles, Wheel and Arbors, Air Vise, Jaw and Air Chucks, Arbor Press Lapping Plates, Tool Holders Granite Surface Plates, Machine Mounts, Air Drill Demag Unit, Regulators and Lubricators, Coolant Pumps and Tanks Angle Plates, Grinding Attachments, Magnetic Chucks, Transformer Cams, Hydraulic Lift Table

INSPECTION DAY OF SALE FROM 8 00 A M
TERMS CASH OR CERTIFIED FUNDS 25% DEPOSIT
(\$100.00 MINIMUM)

COMPLETE PAYMENT SALE DAY
10% BUYERS PREMIUM ON ALL PURCHASES
PA AUCTIONEERS LICENSE NO RY-000087-L

Established in 1834
COMLY Auctioneers
W.M. F. COMLY & SON, INC.
1825 East Boston Avenue, Philadelphia, PA 19125
(215) 634-2500 • FAX (215) 634-0496
PA Auctioneers License No. RY000087-L
e-mail: auctions@comly.com website: www.comly.com

LATE MODEL JOHN DEERE RENTAL RETURN AUCTION
PLUS AERIAL LIFTS & AGGREGATE EQUIPMENT

SATURDAY, JUNE 8 @ 9:30 A.M.

ALBANY (RENSELAER), NEW YORK

DIRECTIONS: From the NYS Thruway (I-87), take exit 23. Follow Rt. 787 North, Turn onto Rt. 20E, cross river, go to 9J and turn right, then follow auction signs. Address: Port of Rensselaer, Rensselaer, NY 12144.

NOTE: Selling will be a large amount of late model John Deere and Bobcat rental fleet equipment, plus aerial lifts, screening plants, trucks & trailers.

EARLY HILITES: 3 TOOL CARRIERS: 2001 JD TC54H (forks), Cat IT24F, Cat IT18B, **20 RUBBER TIRED LOADERS:** 1998 JD 744H, JD 744H, JD 744E, 2001 JD 624H (115 hrs), 1996 JD 644G (quick coupler), 1996 JD 644G (quick coupler), JD 624G, 2002 JD 544H (200 hrs), 1999 JD 544H, 1998 JD 544H, 1996 JD 544H, JD 544G, JD 544B, Cat 936F, Cat 928F, Schaeff SKL8QB, 1999 Yanmar V4-3, **END DUMPS** Cat 773 (50 ton), **25 CRAWLER TRACTORS** 1996 JD 850C, JD 850BLT, JD 850BLGP, JD 750CLGP, JD 750C, 2000 JD 650HLT, 1996 JD 650G IV, 1996 JD 650G IV, 1997 JD 650G IV, 2000 JD 550H, JD 550G, 2001 JD 450HLGP, 2001 JD 450HLT, 2000 JD 450HLT, 2000 JD 450H, 1998 JD 450G IV, 1997 JD 450G IV, JD 450GTC, JD 450G, JD 450D, JD 400G, Cat D3, Komatsu D58P-LGP, **CRAWLER LOADERS** JD 755A, JD 555G, **17 TRACTOR LOADER BACKHOES** 1998 JD 410E (4x4), JD 410E (4x4), JD 410D (4x4), JD 410D, JD 410C, JD 310 SuperE (4x4), (2) JD 310 SuperE (4x4), (2) JD 310E (4x4), JD 310E (4x4), JD 310E, JD 310D, JD 310C, Cat 426B, Cat 416C, **35 HYDRAULIC EXCAVATORS** 1998 JD 120LC, JD 690E, JD 490E, 1999 Hitachi EX200-V, Hitachi EX120-III, Hitachi EX120-II, Hitachi EX100-III, Hitachi EX60BL, Hitachi EX50URG, Cat 322, Cat 312, Cat 311, Cat 307SSR, Cat 307, Cat 225LC, Cat E120B, Cat E110B, Cat E70B, Kato HD800SE, Yanmar B50-II, Bobcat 331, Bobcat 331, (2) Bobcat 325, Bobcat 320, Takeuchi TB025, Takeuchi TB020, Takeuchi TB015, Takeuchi TB007, Mitsubishi MM55-R, New ProTough PT15, **30 SKID STEERS** (3) New ProTough 1700, 2000 JD 250, 1999 JD 240, 1999 JD 240, 1998 JD 8875, 1997 JD 7775, Bobcat 863, Bobcat 853, (2) Bobcat 763, (6) Bobcat 753, Bobcat 453, Case 1845, Takeuchi TL26D (rubber tracks), NH LX865, NH LX865, (2) NH LX665, (2) NH LX485, ASV MD70, 2000 Gehl 6635SXT, **LOG SKID-DEERS** 4000 JD 640G, JD 640E, **FORESTRY** Morbark W13 Chipper, Brush Bandit 200XP Chipper, **MILLING**

MACHINE: Barber Greene Rotomill, **ROLLERS:** Bomag BW210AD, Raygo 236, **AGGREGATE:** New ProTough 400, New ProTough 300, 2000 McCloskey 512R, Radial Stacker, **16 AIR COMPRESSORS** (4) IR XP825WCU, IR XP750WCU, IR P600WCU, (3) IR P375WCU, IR P250WJD, IR 185, (3) 1996 Sullair 185CFM, (2) 1996 Sullair 125CFM, **FORKLIFTS:** Yale 3000 lb., **BOOM LIFTS:** JLG 45HA, JLG 40HA, JLG 40E, **SCISSOR LIFTS:** JLG CM33RT, JLG AM24DC, Genie, Snorkel, **GATORS** (2) 2001 JD Gators (dump), **EQUIPMENT TRAILERS** 2002 Witzco 35T Detach, Fontaine 48' Drop Deck, **TAGALONG TRAILERS** (4) New ProTough 6 Ton, **HI-FLAT:** Tranco Extendable, AUTO 2000 Cadillac El Dorado, **CATERING TRUCKS** 1997 GMC Truck, 1997 GMC Catering Van, **CUBE VAN** 1988 Chevy C30, **PICKUP TRUCKS:** 1997 GMC 1 Ton Dual Crew Cab, Ford F150, **CAB & CHASSIS** 1989 Ford F450, **YARD HORSE:** Ottawa YT60, **SKID STEER ATTACHMENTS** New Grapple & Dirt Buckets, Post Hole Augers, Forks, 6-way Blades, Box Scraper, Tires, **HYDRAULIC EXCAVATOR ATTACHMENTS** New Rockblaster Hammers & Shears, New Bodine Thumbs & Grapples, NPK Hammer, New Bodine Thumbs, Grapples, **SUPPORT** Fuel Tank (5000 gal), Chippers, Tub Grinder, New Norton Clipper Saw, New Dynapac Plate Compactor, Stow Jumping Jack, Radial Drill, Lathe, Part Washer
SALE SITE PHONE: (518) 424-8495
FINANCING AVAILABLE FOR PRE-APPROVED PURCHASERS:

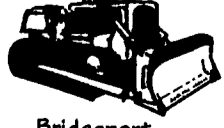
Financial Federal Credit Inc. - Call Anne Landstrom or Richard Prophet toll free at 866.432.0847.
Smart Leasing Inc. - Call Jim Green 800.798.6862, or 610.909.9436 evenings & weekends.
TERMS & CONDITIONS: "Cash or Company Check" accompanied by current "Bank Letter of Guarantee", made payable to Alex Lyon & Son. **NO EXCEPTIONS!!** Everything sells "AS IS", "WHERE IS", "everything sells to the highest bidder without minimums or reserve."



Syracuse (Evenings)
(315) 637-8912

Alex Lyon & Son
SALES MANAGERS & AUCTIONEERS, INC.

PO Box 610, Bridgeport, NY 13030
www.lyonauction.com



Bridgeport
(315) 633-2944
(315) 633-8010 FAX