

Public Auction Register

Closing Date Monday 5:00 P.M.
of each week's publication

Internet Sale Register will be updated
by Friday at 12 Noon

ATTENTION AUCTIONEERS

All sales register info needs complete address,
street, town, county & state.

FRI JUNE 14 - 1PM State Graded Feeder Pig Sales, Carlisle Livestock Market Inc Exit 44 off I-81 turn S then left onto Alexander Spring Rd 717 249 4511

Anniversary Middleburg Livestock Auction Sales, Inc PO Box 185, Middleburg Pa Clarence Shirk and John Shirk, owners 717-656-8793

FRI JUNE 14 - 7 PM Dairy Sale

SAT JUNE 15 8 30AM 24 acre

farmette, antiques, glassware, toys, Farmall A, farm supplies 2700 W Rt 897, between Schaefferstown & Blainsport Edna R -lackman Aaron E Martin 717-733-3511

SAT JUNE 15 - 8 30AM Donation 7 Consignment Sale to benefit hospital bills and medical exp At & J Manufacturing 5302 Amish Rd, Gap, Pa Local Auctions #AU34072

SAT JUNE 15 - 9AM Complete liquidation of Harbor Garden Center Inventory Michael Fortna Auct AU001711-L 717-867-1451

SAT JUNE 15 9AM Machine shop and weld equip, forklift tools steel 14 Miller Rd East Berlin, PA Rentzels Auction Service #AU761-L 717-764-6412

SAT JUNE 15 - 9AM Antiques household goods farm equip primitives & vehicles at 595 W Church St Clay Twp Lanc Co Pa For The Heirs of Jay Ulrich Horst Auctions AU438L 717-859-1331

SAT JUNE 15 - 9AM 25+ acre farmette Center Twp, Snyder Co Kenneth Hassinger AU-001532 L 570-658-3536 AU 002651L

SAT JUNE 15 - 9AM Farm equip antiques tools household goods at the farm, 95 Greble Rd Jon

estown Leb Co Pa Glenn and Connie Landis, owners Nelson L Ebersole, auct AU001307-L 717-867-5221

SAT JUNE 15 - 9AM 35 Acre Farm Antiques, Collectibles, Riding Mower at 15 Coon Creed Rd, Palmyra, PA For Manon A Heck Kleinfelter's Auct Svc Au-2057-L

SAT JUNE 15 - 9AM 47-Acre Farm, Farm Equip Industrial Metal Working Tools at 1446A Tounst Park Rd, Halifax, PA Estate of Nevin F Noblit Deibler & Shoop Auctions AU001213-L AU000842-L

SAT JUNE 13 - 10 AM Textile dyeing/finishing & misc support equip 45 Noble Street, Reading PA Robert D Sherman Auct AU 002566-L

Michael Fox International SAT JUNE 15 9 30AM Belgian Thoroughbred 415 Kiser Lake Rd St Paris, Ohio Warren & Grace Bales Owners Steve Andrews 330-262-9186

SAT JUNE 15 10AM Like new furniture household goods gym equip, tools & Ford 1710 tractor & more at 2943 Whiteford Rd Whiteford Md Jay Edwards 7 Associates 410 569-4125

SAT JUNE 15 - 10AM 7800 Philadelphia Rd Rosedale, Baltimore Co Md RE Antiques col

lectibles & tools O'Neills Auct

SAT JUNE 15 - 10AM Pavilion Kathy Sells a private collection of Modern Era trains Blue Room Railroadiana Ted Maurer AU 000593-L 610-323-1573

SAT JUNE 29 - 11AM Real Estate Auction 657 Euclid Ave Lanc Porterfield Auct AU 003741-L

SAT JUNE 15 & SAT JUNE 22 9AM Real estate farm machinery, large machinist & carpenter equip & tools Estate of Nevin F Noblit David Deibler Au001213 L, Au000842L

MON JUNE 17 2 30PM Antiques & Personal Property at Reinholds Fire Co Banquet Hall Rt 897 Reinholds PA Terms By Ellen Lutz Estate & Pauline Dietrich Estate Art Pannebecker Auct Svc Au001476 L

MON JUNE 17 7PM 2 Unit Real Estate at 79 E Main St Leola Lanc Co Pa By Annie M Stoltzfus Robert E Jeffrey R & Michael L Martin 656 7770 AU000580L

TUES JUNE 18 6 30PM Real estate & personal property at 761 White Oak Rd Strasburg Twp Lanc Co, Pa By Samuel R & Melody J Beiler Robert E Jeffrey R & Michael L Martin 656 7770 AU000580L

REAL ESTATE AUCTION!

TO SETTLE THE ESTATE OF REBA L. HASH, LATE OF WHITEFORD, MD.

THURS., JUNE 6, 2002 @ 7:00 P.M.

On the premises at 4850 Graceton Rd., Whiteford, MD 21160. From Fawn Grove and north, follow PA Leg. Rt. 2080 south approx. 2 mi. to property on right. From Jarrettsville - Bel Air areas, follow MD Rt. 165 north to left turn at Whiteford traffic signal. Follow MD Rt. 136 north to Graceton Store, bear right toward Fawn Grove and continue approx. 1 mi. to property on left.

A very desirable property consisting of 23.1 acres, m/l in Harford County, MD. Improved with a two story frame and vinyl dwelling of 1700+ sq. ft. with large porches, slate roof and oil FWA heat. Lg. eat-in kitchen, LR, den, full bath and pantry/laundry room on first floor. Two stairways to second floor, which has 3 BR and large bath. Small unfinished basement. There is a large German style bank barn and a wagon shed with corn crib. There are 2 building rights with the property, one of which must stay with the existing buildings.

INSPECT: There will be open house inspection two hours prior to auction time. For a private showing, phone the law offices at: 410-838-8338.

TERMS: A non-refundable down payment of 10% of the gavel price is required at time of auction. Balance due in-full on or before July 31, 2002 at final settlement.

**MS. JOY NEEPER, EXECUTOR
CORNELIUS D. HELFRICH, ATTORNEY**



Photos may be viewed on our website:
www.sechristauctions.com

REAL ESTATE AUCTION

SAT., JUNE 29, 2002 12 NOON

Auction to be held 2 miles south of Port Royal along Mountain Road, between Reservoir Road & Butcher Shop Road in Turbett Township
Ranch-Style Home

A .47 acre surveyed lot erected thereon a 1972 28'x40' three bedroom ranch-style dwelling with an attached 24'x32' carport and a 16'x24' rear deck. A large modern eat-in kitchen with plenty of counter space features a pantry closet and includes a built-in dishwasher, hardwood floors highlight the living room, hallway and bedrooms of this charming home. A large bathroom with linen closet. Electrolux central vacuum system, and mountain stone fireplace in the full concrete basement completes this dwelling. The home also includes standard sewage and well, an outside cellar entrance and forced hot-air heating system. Just far enough from town to be considered "country," but close enough to be convenient, here is a modern, well-maintained home you won't want to miss.

Terms: 10% down day of sale, balance due in 30 days. Cash or good PA check

Showing dates: Saturday, June 1, June 8 and June 15 - 12.00 noon to 5:00 p.m

**Harold & Jackie Miller, Owners
R R 2 Box 2090, Port Royal, PA
717-527-4908**

**Bryan D. Imes, Auctioneer, AU-001656-L
R R 1 Box 902, Port Royal, PA 17082
717-527-2449**

Personal Property selling at 9:30 a.m.

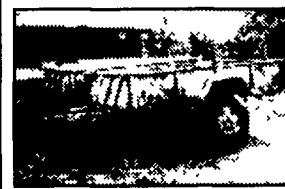
WE'RE CHANGING!

Effective NOW you can contact Shelley Ashcroft at 717-626-2191 (press 5), fax: 717-626-1210 or email: sashcroft.eph@lnpnews.com to place your Public Sales advertising in Lancaster Farming!

ARMY/NAVY/SPORTSMAN RETAIL STORE LIQUIDATION AUCTION

SAT. JUNE 8th, 2002 @ 10AM

LOCATION: Saturn Surplus (Old Engle Ford Building), Millersburg, PA Dauphin County - 30 Miles North of Harrisburg, PA. At the square in Millersburg, proceed North on Route 147 approx 1 mile, auction on right hand side, watch for auction and parking signs.



ARMY/NAVY/HUNTING CLOTHING: large amount of quality/name brand new shirts, pants, BDU's, hats, gloves, T-shirts, scarves, insulated underwear, rain gear, coats/jackets, heated socks, shorts. Numerous amount of patterns/sizes available-orange blaze tiger strip, woodland, FF, advantage, desert, treebark, metro, urban, EMT, Army, security, police, plus more not mentioned.

MILITARY ACCESSORIES: Numerous lighters, binoculars, flashlights, laser pointers, compasses, patches, stickers, handcuffs, field phones, duffle bags, first aid kits, scissors, candles, movies, assortment of gloves, back pack supports, face paints, holsters/gun cases, key holders, knife sheaths, assortment of nylon cord/rope, Camo-Netting-Woodland, OD, camping mats, hammocks, fishing nets, bike rack, flares, hand warmers, light sticks, Military food containers, numerous Ammo cans, wool blanks, folding stools, MRE's, canteen's, mess kits, ice packs, tent stakes, flash lights, spot lights, boots-Hiking, insulated, rubber, gun cleaning items, targets, numerous amount not mentioned.

TOOLS: Pad locks, EMT tools, hammer handles, files, drill bits, wrenches, tube cutters, air line couplers, fittings, circuit testers, lug wrenches, hacksaw, screwdrivers, ratchet straps, drop lights, tire plugs, tool boxes, casters, voltmeter, clevis, bench grinders, hooks, welding tips, extension cords, cable wire, assorted bottles/containers, boat hardware, hand carts, and more.

COLLECTIBLES: Buck, Ontario-military pocket knives, Ertl 1/16th scale trucks, GI Joe items, bears, gumball machines, fishing reels, boat paddles, EMT patches, real size-street stop light, nice compound bows-camo, plus more not mentioned.

STORE FIXTURES: New Sharp XE-A110 Cash register, 4 glass lighted, commercial grade showcases-nice, Coke-Cola Soda machine-"Real Thing", Mannequins, some store shelving units/racking.

TRAILERS, JON BOAT, TROWLING BOAT MOTORS, BASEBALL BACK STOP:

BASEBALL FULL SIZE BACKSTOP- new, chain link
BOAT- Sears 12ft Aluminum Jon boat, trailer, 7 5HP Mercury motor-river ready

TRAILERS: 1 1/2 Ton Army trailer- no title (farm use)
-Small Jon boat/jet ski trailer-never towed behind car

BOAT MOTORS: 1 Minnkota Marine MAG18TRX-28lb thrust-new
2 Minnkota Marine MAG65MX-28lb thrust-new
3 Silence 425-24 lb thrust-new

OWNER: SATURN SURPLUS, MILLERSBURG, PA

AUCTIONEER NOTE: Saturn Surplus has decided to liquidate the contents of its retail store. This is a very large auction. Everyone is invited to attend-General Public, Dealers, Wholesalers, Sportsman. Numerous amount of items are in new condition. Plan on coming early and staying late. Bring your chairs, trucks and trailers.

TERMS: CASH, VISA, CHECK-No out of state or out of area checks, unless you have bank letter of credit-No exceptions (If unsure call auctioneers). All items are sold as is, and must be paid for by the end of the auction. A 10% buyers premium will be applied to all purchases.

PORT-A-POTFOOD STAND***

TENTS AVAILABLE IF NEEDED

Jesse Romberger AU3719L 717-692-4234

Lisa Romberger AU3702L 717-896-3455

FAX NUMBER 717-896-8186 E-mail: Lromberger@aol.com

CALL THE EXPERTS - SPECIALIZING IN ONSITE AUCTIONS

AND SPECIALTY AUCTIONS.

ALWAYS BOOKING ESTATE AUCTIONS!

COMPLETE LIQUIDATION (PHASE II) CALSTAR (DIVISION OF HERTZ) 90 AGRICULTURAL TRACTORS, IMPLEMENTS & CONSTRUCTION EQUIPMENT AUCTION THURSDAY, JUNE 27 @ 9:30 A.M. FRESNO, CALIFORNIA



LOCATION From the South: Take Highway 99 North to the Cedar Ave. exit, turn right at stop sign onto E. North Ave. Make first right at S. Golden State Frontage Rd., bear right to the sale site. **From The North:** Take Highway 99 South to E. North Ave exit, turn left and continue as above. **Address:** 2097 East North Ave., Fresno, CA 93725

NOTE: Calstar Company (A Division of Hertz Equipment Rental) is completely liquidating all of their equipment. We will now conduct Part II of this two-phase liquidation. Selling at the same time will be construction equipment from Hertz Equipment Rental. The group of tractors sold here are of exceptional condition, low-houred and ready-for-work. Selling at the same time will be equipment from Thomas Industries.

HILITES 10 QUAD TRACTORS (2) 1999 Case 9380, (6) 1999 Case 9370, 1997 & 1996 Case 9370, 78 **AGRICULTURAL TRACTORS** (2) 2000 JD 9400T, (3) JD 9300T, (3) 2000 JD 8410T, (3) 1999 JD 8410T, (5) 2001 JD 8410 (4x4), (4) 1999 JD 8400T, (3) 1998 JD 8400T, (4) 1997 JD 8400T, (4) 2000 JD 7810 (4x4), (6) 2001 JD 6410 (4x4), (19) 1999 JD 6410 (4x4), 1997 JD 6400 (4x4), (3) 1995 JD 6400 (4x4), (4) 1999 Cat CH75E, (2) 2000 Cat CH55, (3) 2000 Cat CH45, 1998 Case 8950, (5) 1999 Case MX270 (4x4), (4) 1999 Case MX240 (4x4), 1998 Case IH CX100 (4x4), **ATTACHMENTS** 2000 Composter, Big Ed 3-Shank Ripper, **CONSTRUCTION EQUIPMENT:** SCREENING PLANTS: New ProTough 400, New ProTough 300, 12 **HYDRAULIC EXCAVATORS** (7) Bobcat 331, Bobcat 325, Bobcat 320, New ProTough PT15, Kubota KX41, Takeuchi TB07, **RUBBER TIRED LOADERS** 1998 JD 544H, Case 621, 28 **SKID STEERS** ASV Positrack HD4500, Bobcat 863, Bobcat 853, (11) Bobcat 763, (10) Bobcat 753, Bobcat 750, Bobcat 743, Bobcat 453, Bobcat 443, 10 **AERIAL LIFTS** JLG,

Snorkel, Genie Booms & Scissors, **CRAWLER TRACTORS** 1996 Komatsu D155AX3, (2) JD 550G, 6 **TRACTOR LOADER BACKHOES** Case 580L (4x4), Case 580L, JD 710D, JD 310E, (2) JCB 217, 6 **FORKLIFTS** Gradall 534-6, Eagle R80 (8000 lb), (3) Eagle RC60 (6000 lb), Case 586E, **ROLLERS** IR SD70F, **TRENCHERS** DW 3700, DW 3500, **WELDERS** (3) Lincoln K1278, Miller Big 50, **EXCAVATOR ATTACHMENTS** New Bodine Thumbs, **SKID STEER ATTACHMENTS** New ProTough Grapple & Dirt Buckets, Augers, Blades, Forks, **PICKUP TRUCKS** (2) 1997 Ford F250, (3) 1997 Ford F150, 1997 Ford Explorer, **DUMP TRUCKS** 1997 Ford F800, **FUEL/LUBE TRUCKS** 1986 Ford F700 (v/a), **SURVEY EQUIPMENT**

SALE SITE PHONE: (559) 485-0816

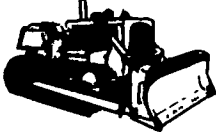
CALIFORNIA BOND #CSC3040980

FINANCING AVAILABLE FOR PRE-APPROVED PURCHASERS

Financial Federal Credit Inc. - Call Anne Landstrom or Richard Prophet toll free at 866 432 0847

Smart Leasing Inc. Call Jim Green 800 798 6862, or 610 909 9436 evenings & weekends

TERMS & CONDITIONS "Cash or Company Check" accompanied by current "Bank Letter of Guarantee", made payable to Alex Lyon & Son. **NO EXCEPTIONS "Everything sells AS IS", "WHERE IS", everything sells to the highest bidder without minimums or reserve.**



Alex Lyon & Son

SALES MANAGERS & AUCTIONEERS, INC.

PO Box 610, Bridgeport, NY 13030

www.lyonauction.com

Bridgeport (315) 633-2944 (315) 633-8010 FAX



Syracuse (Evenings) (315) 637-8912