

MAILBOX MARKET FOR SALE

Whitetail deer fawns. Buy now before permits are needed. Bucks and does only \$175 each. 2 for \$300. York Co. 717-292-9627.

APHA solid Mares, 6 years dun, 5 years Chestnut, ride well, \$3000 each. 717-665-2534. Lancaster Co.

Bicycle built for two, Huffy 26" good cond, firm \$160. Lanc. Co. 717-653-9928.

780 Hydro Cub Cadet 17 HP new engine, \$1200 obo. Belgium made 30.06 rifle with scope, \$600 obo. Lanc. Co. 717-445-4336.

1940 Farmall "A" \$1800. Woods L59 Belly Mower \$600. 5' snow/dirt dozer plow \$300. All prices firm! Berks Co. 610-554-2553.

1986 Ford E-150 work van F.I. 302 ladder racks, shelves, auto, PS, PB, \$2500 obo. York Co. 717-292-3612.

Water ram, rife #15 with books \$185. Antique gas stove, Oriole brand, Balt. Md., nice, \$325. Lanc. Co. 717-687-6412.

Avion camper by Fleetwood, 34' bumper pull, new hitch, 6 new tires, Airstream lookalike, never traveled, \$4000 obo. Lanc. Co. 717-548-2999.

1-2 ton feed bins \$100 each. Older wagon chassis for irrigation pipe or small hay wagon, very nice cast iron radiators. 717-653-4923.

Edison Phonograph roll records over 50 in original containers; child's poster bed for dolls very old. Asking \$250. Lebanon Co. 717-838-4224.

Crows foot bath tub 27" color T.V. blue coach chair, ottoman, contemporary 2 end tables, coffee table, \$1000. Camden N.J. 609-653-9005.

JD 224 wire baler with #30 kicker \$1500 obo. 4 Row bean/corn planter 3 pt. \$250. B.O. Belt pulley for Ford tractor, \$50. Hunterdon Co. 908-735-5471.

Pole building 36x86 open front 12ft. Bays with attached council free for removal, '56 INT scout. Best offer. Leb Co. 717-8670657.

1994 Jimmy S15 4x4 5SP oie recent tires, brakes, belts, highway miles, good condition, \$4000 obo. Lehigh Co. 610-799-9486.

Remington Mod. 11-87 SPS super mag. 12GA. 3 1/2" blk. Matte brand new in box, \$655. Montg. Co. 610-754-6569.

Ford NAA nice, 2N w-stepup nice, 2N good tin, 3-1/2-3pt frow, 3 pt saw-buck, Sauder blade, 3 pt harrow scoop. Northumberland Co. 570-425-2743.

Millie Fleur bantams; Golden Seabright bantams; light Brahma bantams; black Cochon bantams; all are chicks. Leb. Co. 717-866-5180.

605J Vermeer Baler hay saver wheels, Hyd. twine tie, rubber mounted pick-up teeth, flotation tires, like new. Tioga Co. 570-353-7982 eve.

2-row front mounted corn planter for H tractor S.M. Farmall completely restored \$3,875. Cambria Co. 814-674-5937.

Seven Piedmontese cross feeders, five steers, two heifers. Tioga Co. 570-353-7982 eve.

Gehl 1315 side slinger scavenger, tandem axle. Manure spreader, exc. cond. \$6900. Lanc. Co. 717-445-7860.

Horton Hunter crossbow synthetic stock, new scope with one half dozen arrows with quiver. Lanc. Co. 717-733-6482.

AGHA QUATER HORSE gelding, 15 hands, dark-bay w/star, sound, good for beginner, western and trail, owner lost interest. \$2200. Lebanon Co. 717-865-5596.

Platform scales antique Fairbanks No. 11 1/2 wood and metal excellent condition \$125. Dauphin Co. 717-566-5797.

3,000 used red bricks, very clean, 10¢ a piece, Chester Co. 610-399-9711.

Grove 16 ft. tandem rear forage wagon, always shedded. Adams Co. 717-528-4223.

Pug male 4 years old proven stud, happy and healthy, \$350. Lanc. Co. 717-336-6852.

Farmall 560 gas tractor quick hitch dual hydr. 3-B plow ser#1780 good cond. No Sunday calls. \$3200. Lanc. Co. 717-354-3105.

150 year old wood flooring and other material to be removed from house located near northeast Md., Cecil Co., 410-287-5277.

Corolla Geo Prism 4 Dr. A.C. Auto, new belts, tires, water pump, 104K, \$2200. Tbelt Md. Insp. Balt. Co. 410-357-4830.

41 Chevy 4x4 Army w/ winch 99 + Ford 8 ft. bedliner, super duty, \$80. 35 Ft. firewood conveyor on wheels \$500. Sussex Co. 973-948-6296.

21 ft. trailer 2 axle Diamond plate not goose-neck \$1000. 84 Pace Arrow 29 ft. Class A diesel 6.2 16mpg \$9000. 78 Chevy 16' dump 366-5-2sp Hydro Brakes \$3000. Sussex Co. 973-948-6296.

1991 F super duty utility truck 79,000 miles 7.3 diesel good engine maintenance, PTO \$6500. 1986 F0150 truck 154,000 miles. Leb. Co. 717-949-2428.

Snow blower six foot New idea for three point hitch good cond. \$800 or best offer. Chester Co. 610-917-9960.

4 BF Goodrich 33x12.5 R/ 5 mud terrain tires on Ford rims, 50% tread, good cond., \$50 ea., offer 5 p.m. Cumberland Co. 717-243-8843.

IR 3 pt. mechanical transplanter \$150. Ask for Steve. Cumberland Co. 717-776-6418.

Hackney ponies for sale, 51-54 in. broke with lots of snap. Balck & silver German Shepherd pups 4 sale, five weeks old. Chester Co. 610-273-2406.

Kohle generator 4 cyl diesel low hours, bad generator sinner tree planter 3 pt. \$525. 12KW PTO generator \$950. Warren Co. 908-454-3366.

Stainless Steel processing table 10' long 30" wide, with sink 6" portable PTO water pump. Lv. msg. Steve. Lanc. Co. 610-593-2524.

10 Gal. air compressor twin cyl. \$100 no motor works 1974 Ford Torino runs, good shape, \$300. Sch. Co. 570-386-5537.

MF 9015 15' ridgid head exc. cond. belt pulley for JD 2010 tractor, Farmall Cub with snowblade, exc. cond. York Co. 717-993-6901.

1 mobile home axle, 7 mobile home tires, very good. Chester Co. 610-593-6464.

Round bales wheat straw \$80, round bales meadow grass, \$55; kept inside, antique oak dresser with mirror, \$445. Lanc. Co. 717-665-5513.

32' New Holland elevator, very good, \$800. Ten speed Road Ranger transmission, \$150. Lanc. Co. 717-626-4359.

Registered Agouti pygmy buck 14 months old, 17 inches tall or will trade. Somerset Co. 814-443-0791.

(2) used 9 ft.x4 ring hopper tanks, 17 ton capacity. Good shape. Used model 300 flex auger and drive units. South Tioga Co. 570-324-5406.

MF300 combine grainhead 3row cornhead N1323 compicker N1355 grinder mixer N1325 skid loader, Arabian/Thorougbred horses, fiberglass truck caps, Fred. Co. 301-241-3666.

MF cultivator for 165 front and rear \$100. 4'x21' grain auger w/ motor \$125. Ontario 14 hoe grain drill, \$50. Lanc. Co. 717-626-7162.

1991 Audi 100 loaded sun-roof new tires and inspection, maroon, good cond., \$3300 obo. Lanc. Co. 717-665-4387.

50 tons rye straw \$75; 100 tons Timothy hay \$80 4x4 bales. Adams Co. 717-334-6655.

Kolher 4 1/2" bathtub new in crate, 3 coal stoves 6' truck bed liner, 1000' brd. ft. rough cut Poplar. Berks Co. 610-779-0463.

Finishing Mower Wanted! (Belly-mount/rear pto for AC-B or Farmall BN); John Deere Garden Tractor Wanted!! (Parts or Fixer-upper) Tioga Co. 607-642-9912.

Original 7 HP Cub Cadet with mower deck, older restoration, runs good, \$550. York Co. 717-244-3415.

NH 166 inverter Hyd Drive, like new, exc. cond., \$4750. JD 3945 switch plow, good cond., \$2850. Lanc. Co. 717-733-4683.

IH Cab for 66 series with air and heat, Iv. msg. Lanc. Co. 717-786-3057.

CASE "300" Grills and side panels, also hinges and brackets for grill frames, Ph. 301-223-9005, Wash. Co., Md.

Whitetail deer fawns, does and bucks, bottle fed \$200 ea. Older deer available. Call Joe Monmouth Co. 732-462-0321.

Toro Wheel Horse 14 HP tractor, 42" cut. Five speed. Also John Deere model 160 with bagger system, excel. cond. Bucks Co. 215-355-8324.

Fiberglass tanks, Vertical, 6, 7, 8 & 10,000 gal. flat & conical btus w/valves for fertilizer, grain, etc. 25¢/gal obo. Mont Co. 610-940-7668.

Manufacturing equipment to start making slip. Also make art, taxidermy clay, manufacture molds. Ceramic shop, molds. Price \$45,000. Franklin Co. 717-369-4941.

Ford 3000 3-PH tractor L.G.P. with mower, v.g. cond., Dodge dump D-350 4x4 v.g. cond., call after 7 p.m. Ocean Co. 732-269-0840.

Yorkshire boars, ready to breed now, call Mark, well priced to move out. Bucks Co. 215-723-4904.

Dump/bed 1998 GX 16 1/2' airgate, electric tarp, complete with hydraulics, console control, PTO for 8LL transmission. York Co. 717-382-4881.

1940 Farmall H all restored. Not just painted! New motor, \$3,250. Schuylkill Co. 570-345-0364.

3 beef cows with calves on side, call Mark after 5 p.m. Bucks Co. 215-723-4904.

Mower conditioner Case 555 with operators manual for parts or repair, used last year, make offer. Perry Co. 717-789-4646.

JD 327 baler with #40 ejector with electric joystick controls. Nice. York Co. 717-456-7375.

Lancaster Farming, Saturday, June 1, 2002-B21

61" belly mower for Case International, model 61MB, \$450, York Co. 717-938-6692.

Ferguson T030 \$2200. 2001 D2500 Cap, Dsl. Loaded! 36K \$31500. HD17' flatbed trailer no title \$950. Karmanchia chassis. Adams Co. 717-677-6721.

Kubota L2250 4wd loader 5' Bushong 600 hrs. \$6500 JD720 gas NF Dual hyd 3 pt. Runs good. Tin G.A. Co. 410-438-3360.

M.F 224 baler with 212 thrower, new idea 5109 Moco 9ft sickle bar hay conditioner 16 ft hay elevator with motor. York Co. 717-244-4168.

JD 400 Rotary hoe new wheels, 12' hitchmaster off set disk 302 NH side discharge manure spreader. Berks Co. 610-562-2334.

1956 JD 420 Hicrop tractor. Older restoration. Complete w/ 3pt. Good tires. Serial No 87553, \$10,500. Dauphin Co. 717-657-1942.

Ingersol 222 riding tractor with mower deck engine needs some work, great for parts; still works, \$300. Berks Co. 717-933-8962.

Generators: 7500 Watt 16 HP Briggs I/C elec. start 120/240V. \$1000. Also 2300 watt 120V \$550. Like new. Welder, \$125. Adams Co. 717-677-6313.

Case 1150 dozer, hyd. angle blade, 6 cyl diesel-engine stuck, 40-50% U/C delivery available, \$1600. Salem Co. NJ 856-691-0526.

3 year old 4 lb. male Pommeranian, beautiful, \$225; also small 7 week male puppy, ready 6-10 \$275 obo. Lanc. Co. 717-665-6482.

86 Ford F-350 dump truck with tool boxes, diesel, new paint, insp., runs good, good looking truck. \$5000. Lanc. Co. 717-354-8053.

Truck caps fiberglass Ford Ranger 83-92 Dodge, full size \$150 ea. Alum caps 87"x5'W 90"x5', \$95 ea. Cecil Co. 410-658-4351.

Produce or flea market wagon with roof, flip up sides, PTO generator or cart, 9 ton feed bin. York Co. 717-228-2080.

1994 Case IH 495 diesel 42HP with Woods front end loader 1027 and Woods 1050 3 pt. hitch backhoe. NC Co. 302-834-4728.

Farmall H tractor \$1,000. 36' bale elevator \$200. JD Sprayer 36' \$1,000. Ed Slater, 3062 Keyber Rd, Schwenksville, PA 19473-1502.

1965 Elcamino, 1964 Studebaker Hawk, \$2500 MF205 combine with grain and corn headers, \$500. Call Randy before 9 p.m. Berks Co. 717-933-5096.

4 Holstein heifers short-bred good sires. \$1600 each. 4 month Holstein bull counselor son. Good pedigree, \$500. Lanc. Co. 717-442-9717.

I.H. TD-6 bulldozer, 7' blade, 38hp diesel, 8500 lbs., has manuals, repainted, looks and runs nice. \$4000 obo. Nites/weekends Lehigh Co. 610-298-3206.

Rock picker windrower 8 foot PTO with slip clutch, like new, paid \$6000 asking \$2500. Sussex Co. 973-875-1597.

J.D. Model H tractor with culfts hyd. all original field ready. For price, call Lyc. Co. 570-584-6008.

Boat 1973 wellcraft center console 21 ft. 1994-135 Mercury rebuild in 99 with 1998 loadrite trailer. Great fishing boat. Fiberglass. \$4000. Leb. Co. 717-272-7279.

NH 451 round baler 515 field ready, \$3000. NH hay bline 489 \$1,800. NJ rake \$900 obo. Juniata Co. 717-734-3592.

1978 Chev. Pickup \$500. 1975 Ford dump 17' bed. Int. lime spreader truck. 7' NI hay conditioner. Perry Co. 717-444-3968.

NI compicker 323 with Wisconsin motor mount, works good, \$400. Dauphin Co. Lv. msg. 717-365-9950.

International 185 Cub Low Boy 13.6-16.1 turf tires, nice, \$3,750. Cumb. Co. 717-243-4043.

NH 489 Haybine, good cond., shed kept, field ready, \$2200 obo. Centrifugal pump with 3/4 hp electric motor, \$100. Chester Co. 610-998-0672.

1997 Red Mitsubishi Eclipse, 2 door, with sun-roof. Good cond. \$7,200. Cumberland Co. 717-776-7617.

1988 Volvo single axle tractor, cab over, exc. shape, new shifter, \$5000; exc. farm truck or over road. Sch. Co. 570-345-3229.

Start-All, 5hp engine w/ gear reduction, Sjtih Cutt off saw, JD-1H turbo, minie-mo 108, boring bar, 250 lb. torque wrench, sandblast. 330-733-7044.

J.D. 1360 diskbine \$5000, J.D. 346/thrower \$3250; N.H. 144 hay inverter like new, \$2000; J.D. 215 Flex \$1250. Bucks Co. 215-536-5182.

1966 Chevy 3/4 ton whole or parts, \$500 for all. Oil-ver cultivators, 2 sets of 2 row \$50. Northampton Co. 610-837-6047.

The Natural Way To Heat Mahoning Outdoor Furnaces

Cut Your Heating Costs With Our Outdoor Furnace

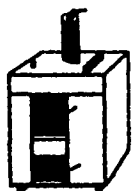
- Standard Model Burns Wood, Coal or Wood by-products
- Multi-Fuel Model Burns Wood, Coal, Oil or Gas

Early Summer Sale

Now Till June 10th

7% to 10% Discount

Adapts to any existing heat system installation & accessories available



DOUGLAS FISHEL

Gettysburg-New Oxford
(717) 624-3639
dgfishel@hotmail.com

MAILBOX MARKET AD FORM

Only ads submitted on this official form will be published in our mailbox markets. No photo copies accepted!

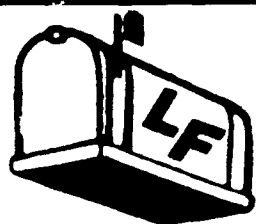
Please NO PHONE CALLS • Please PRINT LEGIBLY

Attach Your Lancaster Farming Mailing Label Here

Check One:
For Sale Notice Wanted
If You Do Not Wish To Be On The Internet Please Check Here

1	2	3	4
5	6	7	8
9	10	11	12
13	14	15	16
17	18	County	Phone No.

No Phone Calls Please!



FREE TO SUBSCRIBERS ONLY

PLEASE READ ALL REQUIREMENTS BEFORE FILLING OUT FORM!

Requirements:

- 1) Subscribers allowed "one" free Mailbox Market per month only. (Ad will appear 1 week only).
- 2) Lancaster Farming Mailing Label must be attached.
- 3) Limit: 20 words.
- 4) Phone number must include area code.
- 5) Your County must be included.
- 6) Markets must be received in office by Monday or will be held until following week's issue.
- 7) No Business Ads accepted.

** The Lancaster Farming staff has the right to reject any Mailbox Markets that do not meet these requirements **

Mail To:
Lancaster Farming
Mailbox Markets
1 E. Main St.
P.O. Box 609
Ephrata, PA 17522

DIESEL POWER SYSTEMS

415 Peters Dr. • Gordonville (Lancaster Co.), PA 17529

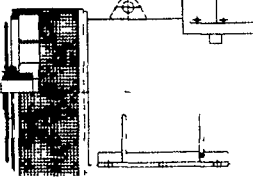
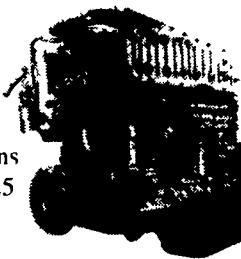
Cummins - Isuzu - VW

Industrial Power Units & Engines
10-2,000 HP



PTOs
SAE 6 thru 0
7" thru Triple 14

Cummins
N14-525



SPECIAL SALE PURCHASE

(Limited Quantity)

1006T Perkins Power Unit. \$7,895
180 hp w/Clutch
8 Hp Lombardini Air Cooled \$875

Single- & Two-Bearing Generators (8) KW @ 3600 (2) Bearing Generators \$378/ea.

New - Used - Rebuilt

Qualified Reseller Discounts!

Call for Complete Product Line Listing
717-354-4801 • Toll Free 877-354-4808
Fax 717-354-4404