

PJHA Conducts Preview Show

MANHEIM (Lancaster Co.) — The Pennsylvania Junior Hereford Association conducted its preview show May 18 at the Manheim Farm Show grounds. Cliff Orley judged the show and John Meents served as ringman. Results follow:

- Spring calves: 1. Donald Sunday.
 November calves: 1. Christopher Hess.
 September calves: 1. Can Tuner.
 Calf champion: Can Tuner
 Reserve champion: Christopher Hess.
 Summer yearlings July-Aug.: 1. Derek Brehm. 2. Liz Hitz.
 May-June heifers: 1. Margeaux Firestine.
 April heifers: 1. Hope Long. 2. Katie Shultz. 3. Can Tuner.
 March heifers: 1. Emilie Miller. 2. Jennifer Shultz. 3. Donald Sunday.
 Junior champion: Hope Long.
 Reserve champion: Margeaux Firestine.
 Feb. heifers: 1. Katie Shultz.
 Jan. heifers: 1. Margeaux Firestine. 2. Liz Hitz. 3. Margeaux Firestine.
 Nov.-Dec. heifers: 1. Nicole Hess.
 Sept.-Oct. heifers: 1. Can Tuner. 2. Krsta Moser. 3. Christopher Hess.
 Senior champion female: Katie Shultz.
 Reserve champion: Margeaux Firestine.
GRAND CHAMPION FEMALE
 Katie Shultz
RESERVE CHAMPION FEMALE
 Margeaux Firestine
 Cow-calf 3 years and above: 1. Donald Sunday.
 Champion bred and owned females: Margeaux Firestine.
 Bred and owned bulls: 1. Liz Hitz.



- STEERS**
 Medium weight: 1. Liz Hitz. 2. Donald Sunday 3. Krsta Moser.
 Heavyweight: 1. Emilie Miller.
 Lightweight: 1. Katie Shultz.
GRAND CHAMPION STEER
 Liz Hitz
RESERVE CHAMPION
 Donald Sunday

- SHOWMANSHIP COMPETITION**
 Senior division (16-21 years old): 1. Emilie Miller. 2. Margeaux Firestine 3. Hope Long.
 Junior division (13-15 years old): 1. Can Tuner. 2. Liz Hitz. 3. Chrs Hess.
 Intermediate division (11-12 years old): 1. Jennifer Shultz. 2. Krsta Moser.
 Pee-Wee division (8-10 years old): 1. Katie Shultz. 2. Derck Brehm. 3. Jenna Moser.

April Milk Production Up 5 Percent In N.Y.

ALBANY, N.Y.) — Milk production in New York State during April totaled 1.02 billion pounds, according to the New York Agricultural Statistics Service.

This total is up 5 percent from the 972 million pounds of milk produced in New York during April 2001. Both a larger milking herd and a higher output of milk per cow contributed to the increase.

The 679,000 dairy cows on farms during April was up slightly from the previous month, and up 1 percent from a year earlier. Milk per cow averaged 1,500 pounds during the month, up 50 pounds from the April 2001 output.

New York dairy farmers received an average of \$12.90 per hundredweight of milk sold in April, down 50 cents from the previous month and \$2.50 below a year earlier.

Sidney And Alberta Riggs Selected For Honors

STATE COLLEGE (Centre Co.) — Sidney and Alberta Riggs, owners of ErReR Hill Farms, located near Friedens, Somerset County, have been selected to receive the 2002 Seedstock Breeders Award from the Pennsylvania Cattlemen's Association.

The couple first bought Angus cattle in cooperation with Sidney's father, Eugene, in 1957 and have embarked on a comprehensive herd and breed improvement program since that time through many different management and breeding efforts.

According to Terry Shearer, president of the Pennsylvania Cattlemen's Association, "in many ways the Riggs breeding and management program exemplifies the modern application of basic principles of animal genetics to improvement of beef cattle."

"This has enhanced the genetic capabilities of beef cattle to even further increase the efficiency of using feed and other land resources in producing higher-quality, more nutritious beef for the consumer."

ErReR Hill Farms has participated in the Pennsylvania Department of Agriculture Meat Animal Evaluation performance-testing program since the 1970's and have owned the top-indexing and the top-selling bull.

In addition, ErReR Hill Farm have held three performance-tested bull sales on the farm, which is unique among Pennsylvania breeders of any beef cattle breed. The number of cows in the herd, as well as the improved genetic ability, has allowed performance testing and subsequent sales to be accomplished similar to the larger herds in the western states.

Recently, ErReR Hill Farm held its first production sale which averaged \$3,700 per lot, with a top sale of \$19,000 cattle sold through this sale were purchased by buyers from 15 different states.

Due to the success in breeding and sales management of the herd, Penn State University's extension and research programs has benefited from embryos and live cattle being donated to its extension and research programs. This has resulted in a long-term agreement between ErReR Hill Farm and Penn State for continued cooperation and even further enhancement of the genetic ability of both the university and ErReR Hill herds.

In addition to the support of the Penn State University program directly, the Riggs family has supported 4-H and FFA events in the county for many years. They have been the top buyers of livestock at the county fair, and have contributed to state youth programs.

Another example of the dedication of Sidney and Alberta Riggs to the importance of education, particularly youth involved in agriculture, has been the continued support from the initiation of the Pennsylvania Beef Expo Junior Show and other Junior Expo activities.

The Pennsylvania Beef Expo Junior Show has become the largest junior event in the Northeast states, and could not exist without contributions from individuals such as the Riggs family. ErReR Hill Farm has been the site of many education events, including field days and farm tours.

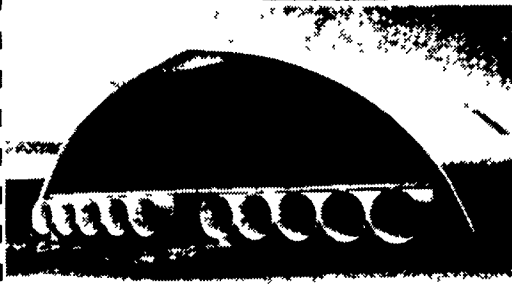
In addition to the outstanding genetics that has been developed in the cattle herd by the Riggs family, there is application of many environmental stewardship and land-conserving practices that have not only conserved the natural resources of the farm under the Riggs management, but has also served as an environmental education aid to both farm and non-farm groups and individuals.

Countless other producers have benefited from observing the effectiveness of soil conservation practices that not only conserve natural resources, but also improve the efficiency of beef production. ErReR Farms received the Environmental Stewardship Award from the Pennsylvania Cattlemen's Association in 1998, and has continued to make even further improvements since that time.

More information about the honors and awards presented by the Pennsylvania Cattlemen's Association (PCA) and the National Beef Cattlemen's Association can be obtained by calling 814-238-5888.



Keep Your Cows Comfortable with "TUNNEL VENTILATION"



Free Stall Barn, Elizabethtown, PA



Tie Stall Barn, Womelsdorf, PA

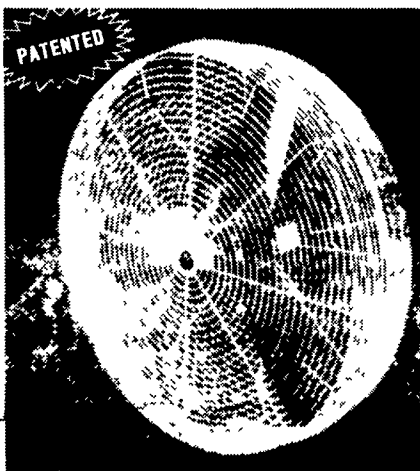
CHECK OUR PRICES BEFORE YOU BUY!

Fans In Stock For Immediate Delivery

SCHAEFER Air Circulation Fans

24" & 36"

Ideal For Freestall Barn Ventilation



WILL SHIP ANYWHERE

Call CEDAR CREST To Assist You In Designing Your Ventilation System. We Also Do Complete Installations



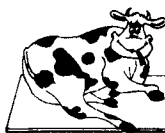
CEDAR CREST EQUIPMENT

717-866-1888

339 King Street, Myerstown PA 17067

Parts Stores: East Earl—717-354-0584 • Quarryville—717-806-0484

800-646-6601

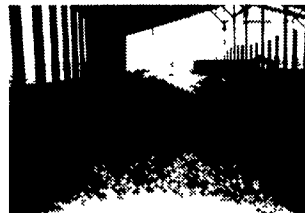


Pasture Mat

The Golden Standard In Cow Comfort

Pasture Mat Plus

The Perfect Addition To Your Pasture Mats



Why Pasture Mat?

- Its soft durable design provides added cushion to both old & new mattresses
- It helps to remove the ripple effect of the mattress, and increases the ease of cleaning

- Pasture Mat is tightly stuffed with rubber and sewn every 4" to prevent shifting
- Proven most durable top cover
- Least abrasive top cover on the market
- Fits any stall
- Proven performance

For details and installation with over 9 years experience, call:

Petersheim's Cow Mattresses

117 Christiana Pike (Route 372), Christiana, PA 17509

U.S. Pat. No. 5653195

610-593-2242

Ask For Merrill or Sam