

Va. Provides Avian Influenza Update

RICHMOND, Va. — Officials with the Virginia Department of Agriculture and Consumer Services (VDACS) continue to test for avian influenza in an effort to contain the spread of the disease. The latest figures posted for May

28-31 follow.

No. of farms affected: 178; no. of farms quarantined: 172; no. of farms depopulated: 176; types of farms affected: turkey breeders, 26; commercial turkeys (meat birds), 116; broilers (chickens),

10; broiler-breeders (chickens), 25; and layers (chickens) 1.

Birds depopulated to date: 4,322,809; quarantined farms not yet depopulated: 2; birds in quarantine waiting for depopulation: 22,600; counties affected: Rock-

ingham, 130 cases; Shenandoah, 16 cases; Augusta, 19 cases; Page, 11 cases; Greene, 1 case; and Highland, 1 case.

VDACS has implemented mandatory preslaughter testing on all breeder birds, commercial turkeys, and broilers as well as mandatory testing of any flocks with respiratory symptoms. If a flock tests positive, officials will

quarantine the farm immediately and order the destruction of the flock within 24 hours.

The poultry company is responsible for depopulation. Disposal may be by one of three methods: on-farm burial or composting with a DEQ permit, incineration, or movement of carcasses in sealed, leakproof containers to a sanitary landfill.

OPEN HOUSE

Graywood Farms, LLC

225 Mason Dixon Rd., Peach Bottom, PA

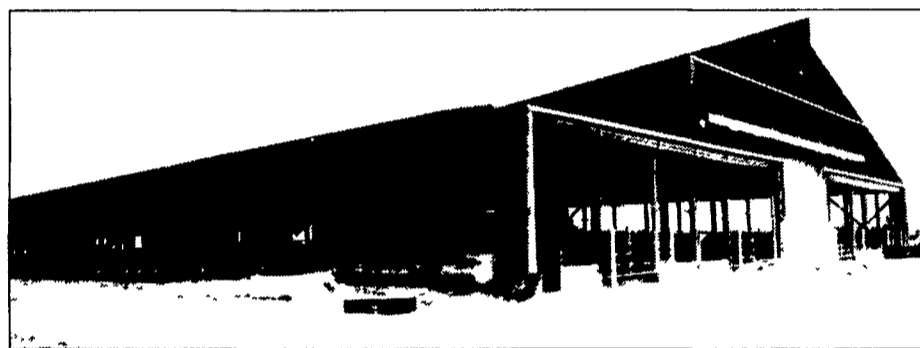
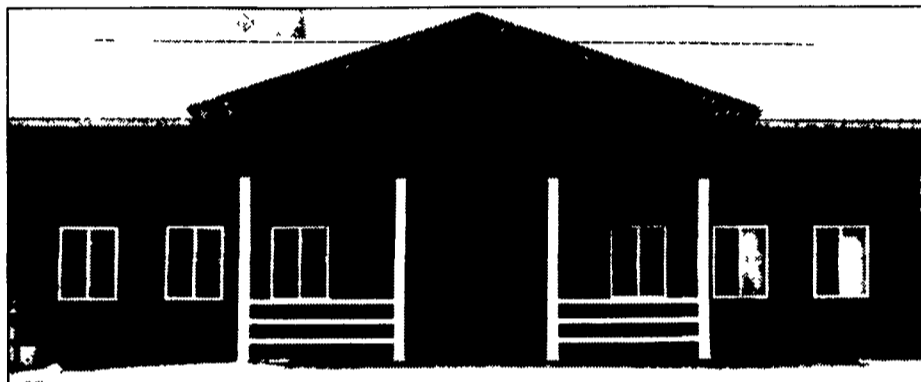
June 4, 2002

10:00 AM to 3:00 PM

Complete Dairy Complex



From Left: Graywood Farms, LLC Members Steve Graybeal, Byron Graybeal, Clay Hatcher and Joe Graybeal



Designed and Constructed by **Triple H Construction, Ephrata, PA**



Directions: Coming from North of site: Route 272 South to Wakefield. Take Route 222 South for 2/10 of a mile & bear right on Pilotown Rd. at the Y. Take Pilotown Road for 2 1/2 miles. At 3-way intersection turn left on Cornwall Lane. Open House on the right. **Coming from South of site:** Rt. 1 to Route 222. Route 222 North to Mason Dixon Road. Turn left on Mason Dixon Road and go to Cornwall Lane. Turn right on Cornwall Lane. Open House will be on left.

FEATURES:

- Double 15 Parallel Westfalia Surge Magnum 901 Parlor with basement.
- 112' x 480' x 14' Free Stall barn - 606 stalls
- 49' x 136' Crossover Special Needs Barn with Sort System
- Fisher & Thompson Movable Operator Platform
- 20' x 20' Houle Manure Separation System
- Flush System
- HDPE Lined Lagoon
- Rufus Brubaker Refrigeration System
- Sturdy Built Stalls, Fencing & Waterers.

VENDORS:

- Maryland/Virginia: 800-552-1976
- Sturdy Built: 717-484-2233
- Rigidply Rafters: 717-866-6581
- Groffdale Concrete Walls: 717-656-2016
- Alta Genetics: 717-786-2212
- Rufus Brubaker Refrigeration: 717-786-1617
- Lapp's Barn Equipment: 717-442-8134
- Manada Construction: 717-933-8853
- Lewis Casualty: 717-786-2073
- Mid Atlantic Agri Systems: 717-529-2782
- Ross H Rohrer & Son: 717-786-3372
- Quarryville Herd Health Association: 717-786-3670
- Lancaster DHIA: 717-665-5960
- E H Gochnauer & Son, Inc.: 717-299-3776
- Hooper, Inc: 717-786-8231
- Deer Creek Equip.: 610-932-8858
- Shank Doors. 610-376-5061
- Norbco: 315-853-3936
- Walter Martin: 717-336-2621
- Dan Leer: 717-948-5133

TRIPLE H Construction
 717-738-2142 • 800-874-7531
www.TripleHConst.com
 430 Springville Road • Ephrata, PA 17522
 Custom Builders of Dairy, Storage,
 & Commercial Buildings

FISHER & THOMPSON
 INCORPORATED
 DAIRY & MILKING EQUIPMENT SALES & SERVICE
 15 Newport Rd. • Leola, PA 17540
 717-656-3307

allfirst
 John W. Risser, Lancaster • 717-560-3175
 Wayne A. Steinour, Hanover • 717-630-4539
 Allfirst Member FDIC