

SINCE 1936

M.M. WEAVER & SONS, INC.

Leola, PA 17540 Phone: (717) 656-2321

Located: 4 miles West of New Holland on Rt. 23, 1-1/2 miles Northeast of Leola on the No. Groffdale Rd., 1 mile on the right, opposite Groffdale Mennonite Church.

**ALL LOCAL TRADES**

98 New Holland 590
Sq Baler, 3'x3', 4500 Bales
\$36,900



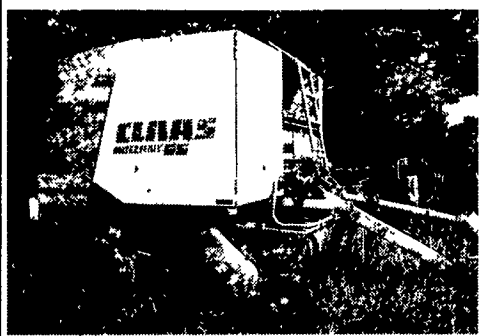
97 New Holland 590
Sq Baler, 3'x3', 13,000 Bales
\$29,500



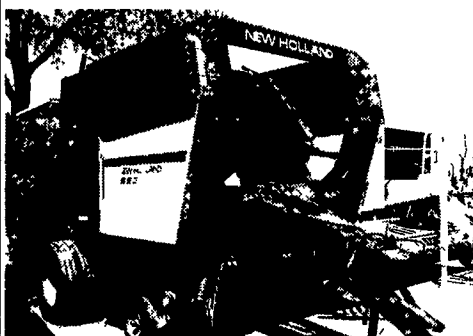
97 Claas 1200 RC
with Roto Cut 27x48, 18,000 Bales
\$38,500



New Claas 2200
Square Baler, 27x48, Demo
\$49,000



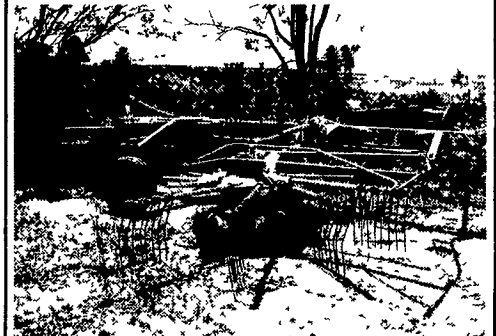
99 Claas 66 Round Baler,
4x5, Wide Pick-Up, Net-Twine
\$10,900



New Holland 853 Round Baler
\$5,900



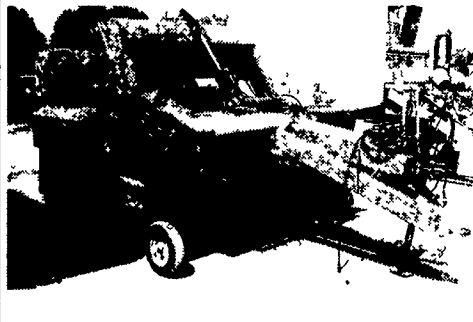
New Holland 664 Round Baler
\$9,500



01 Claas 1550
Twin Rotary Rake
\$15,500



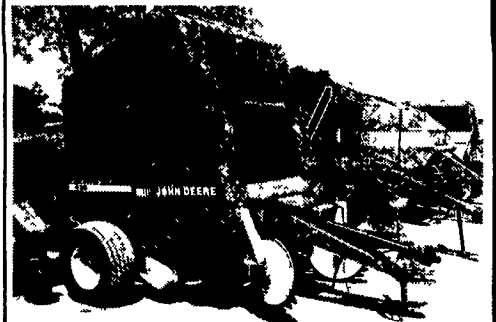
Gehl 2240 Center Pivot 12' Haybine
\$1,800



New Idea 484
Round Baler 4x5
\$3,200



New Holland 488 Haybine 9'
\$2,500



John Deere 435
Round Baler 4x6,
\$8,900

USED COMBINES

85 MF 860 4x4 2466 Hrs, Ser #19374 **\$12,500**
85 MF 860 4x4 Ser #19749, 5,000 Hrs **\$11,500**
81 MF 860 Ser #15125, 4,300 Hrs **\$8,000**
79 MF 760 Ser #9899, 3,260 Hrs **\$4,000**
75 MF 750 Ser #5130 **\$3,000**
91 MF 8460 Ser #09402425, 2758 Hr. **\$45,000**
90 MF 8460 Hill Side Ser #9402540, 3774 Hr. **\$45,000**
90 MF 8460 Hill Side Ser #9402539, 2428 Hr. **\$45,000**
89 MF 8460 Hill Side Ser #9401998, 4026 Hr. **\$35,000**
82 MF 850 Ser #23681, 4600 Hr. **\$7,000**
79 MF 550 Ser #1739 **\$11,000**

USED HARVESTERS

0% Interest For 15 Months
On Most Used Harvesters

01 JD 6750 4x4 Corn Cracker, 200 Hrs., Hyd. Outlets, 10' Hay Head, 6 Row Independent Corn Head **\$189,000**
99 Claas 840 4x4 Corn Cracker, 380HP Corn Cracker, 30 5R32 Tires, 982 Cutter Hr., 1101 Engine Hrs, Hyd Outlets, Ru 450 Ind. Corn Head, 10' Hay Head. **\$160,000**

00 Claas 860 4x4 Harvester 435 HP Corn Cracker, Auto Lub, Hyd. Outlets, 205 Cutter HR, 300 Engine Hrs, 6 Row Ind Corn Head, 10' Hay Head **\$233,000**

00 FX38 New Holland Harvester Corn Cracker, 700 Cutter Hrs, 900 Engine Hrs., Hyd. Outlets, 6 Row Corn Head, 10 Hay. **\$176,000**

95 Claas 880 4x4, 503 HP, Auto Lub 24 5R32 Tires, 1358 Engine, 1024 Cutter, 10' Hay Head **\$149,000**

JD 6710 4x4 Corn Cracker, Hyd Outlets, 2448 Cutter Hrs., 4106 Engine Hrs., 6 Row Kemper, 14' Hay Head **\$98,500**

Gehl 1265 Harvester, Pull Type, 3 Row, 7' Hay Head **\$20,000**

New Holland 900 Harvester 2 Row, Hay Head **\$16,900**

Gehl 1275 Pull Type, Corn Cracker, No Heads **\$18,000**

Gehl 1060 Pull Type w/Hay Head **\$5,200**

802 New Idea Uni System 4x4, 3300 Hrs w/868 Harvester, Hay Head, 774 4 Row Corn Head And 737 Husker Bed **\$13,900**

790 New Holland Harvester 2 Row Corn With Corn Cracker **\$11,900**

00 Claas 880 Harvester, 4x4, SN#49103553, Auto Lube, Corn Cracker, OD Trans, Hyd for Dump Wagon, 12' Hay Head, 6-Row Independent Corn Head **\$229,000**

99 JD 6750 Harvester, 4x4, 365 HP, Corn Cracker, 30 5R32 Tires, Hyd for Dump wagon, Auto Lube, 1022 Cutter Hours, 1310 Engine Hours, 10' Hay Head, 6-Row Independent Corn Head **\$155,000**

96 Claas 860 Harvester, 4x4, Auto Lube, 435 HP, 30.5R32 Tires, Corn Cracker, Hyd for Dump Wagon, 1321 Cutter Hours, 1856 Engine Hours, Claas 12' Hay Head, 6-Row Independent Corn Head **\$160,000**

JD 6710 Harvester 4x4 Corn Cracker, 6 Row - 10 Hay, 1600 Cutter HR. **\$94,000**

USED TRACTORS

MF 1150 w/Duals, 135 PTO HP **\$6,900**

98 MF 263 2WD, 53 HP, 300 Hrs **\$15,900**

89 MF 1020 4x4 Hyd, Power Steering, Turf Tires, 1933 Hr **\$6,900**

MF 8160 4x4 Cab, 180 HP. **\$69,000**

2 - MF 3650 4x4, Cab, 130 HP **\$29,000**

MF 4253 2WD, Platform, Low Hrs, 85HP. **\$25,000**

2 - MF 1155 2WD, Cab, 140 HP **\$8,000**

MF 3680 4x4, 161 HP **\$32,500**
MF 3545 4x4 Cab, 126 HP **\$16,000**
MF 135 Cont Gas restored 38 HP **\$5,500**

RENTAL AND DEMO MODEL TRACTORS

MF 8160 4x4, 180 HP, Duals **\$72,000**
MF 390T - 2WD, 18 Speed Trans, 80 HP **\$27,000**

HAY EQUIPMENT

01 Claas 1550 Dual Rotary Rake **\$15,500**

New Holland 255 Rake-Tedder **\$2,900**

97 Claas 1200 RC Sq Baler 27"x48", 18,000 Bales **\$38,500**

99 Claas 4x5 Round Baler Wide Pickup, Net-Twine **\$10,900**

Claas 2200 Large Sq Baler, 27"x48" DEMO **\$49,000**

E-Z Trail Bale Basket **NEW**

Gehl Disc Mower Conditioner, 10' **\$2,500**

98 New Holland 590 Sq Baler, 35"x32" **\$38,000**

Hesston 6650 S P Haybine, 16', 1200 Hr. **\$5,900**

MISC. EQUIPMENT

Amco 19'7" Disk **Demo**



Just Traded! 90 MF 8460 Combine, 4200 Hrs, Ser.#9402423, Hill Side Cleaning, 15' Flex Head, 1163 Corn Head \$38,500



JCB 185-65 Fastrac, 180 HP
\$55,000



White 31 Field Boss, 31 HP w/Loader
\$7,000



01 JD 6750 4x4 Corn Cracker, 200 Hr, 10' Hay Head, 6 Row Independent Corn Head \$189,000