

**Salesmen:**  
**Alvin Martin**  
**Bill Ryland**



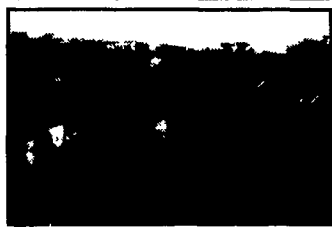
# WENGLERS OF MYERSTOWN FARM MACHINERY (717) 866-2135



814 S. COLLEGE ST. (ROUTE 501)

[www.wenglers.com](http://www.wenglers.com)

MYERSTOWN, PA 17067



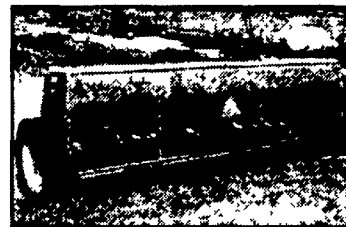
New Holland 310 Baler w/Thrower, Super Sweep Hay Pick-up, Good, Clean Little Baler \$4,200



Woods 6500 & 7500 3 Pt. Backhoe Attachments In Stock Also 2 Used 3 Pt. Hoes



Degelman Rock Picker, 54" Working Width, In Very Good Condition \$6,850



JD 8200 15x10 DD drill w/press wheels and lift cylinder, great soybean drill!



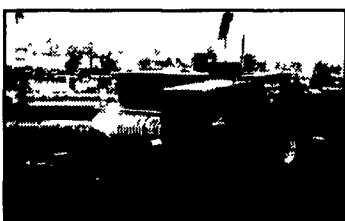
Several Good Used Elevators in Stock This One is a Zimmerman 40', We also have 20', 30', 36'



Krause model 6100 10' Landsman a nice clean field cultivator in good condition w/tine harrow and rolling baskets



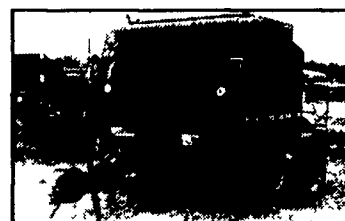
NH LS190 Skid Loader, 877 Hours, Very Nice and Clean, Has Optional Counterweights, Good Tires, You'll Like The Quality, \$23,000



Ford NH 575 baler w/ 1/4 turn, very nice



Woods 9180 15' Turf Batwing, A Good Used One And Also A New One In Stock



JD 375 Round Baler Makes a 60"x51" 1000 lb bale

### COMPACT TRACTORS

- Ford NH TC21D 4x4 w/blade
- Kubota 2250 4x4 w/loader
- Kubota B21 TLB
- Power King 2414 w/3 pt. & PTO
- JD 4100 4x4 (like new)

### MANURE SPREADERS

- Ford NH 145 w/tailgate
- 2) IH Cub Manure Spreader
- NI 3632 Tandem, 320 bu., Tailgate, Nice
- NI 351A Spreader
- IH 155 w/top beater
- Pequea 50 & 70 ground drive
- McCormick 200 ground drive

### DISC HARROWS

- Miller 11' Offset, Nice
- Miller 8' Offset, Nice
- White 271 18' Rockflex,
- JD 19' 220 Center Fold
- JD 1630 11' Cutting Disk
- JD MX225 7' offset (new)
- JD 8' & 9' Disc
- 2) JD 6' Offset drag disc
- Oliver 12' Transport Disk
- IH 10', 12' & 13' Disc
- MF 6' 3pt Offset Disc
- MF 9' 3pt Disc
- MF 620 13'-Rock Flex
- IH 8' FH Disk
- Ford 14' Disk
- Ford 10' 3pt Disc
- Case 8' Offset
- Several Small 3pt Discs, 4', 5', 6' & 7'

### SOIL SAVERS & CHISELS

- Brillion 7T soil saver
- IH 6000 9T soil saver
- Glenco 5T soil saver
- Deutz Allis 7T soil saver
- MF 9T soil saver
- Sunflower 7T soil saver
- Hesston 9T soil saver
- Landoll 9T soil saver
- IH 7T pull type chisel
- Blanton 7T 3pt chisel
- Bush Hog 12T pull chisel

### GRAIN DRILLS

- JD 8200 21x10 DD soybean drill
- (2) JD FB-B 15x7 w/Grass
- Oliver 13x7 DD w/Grass & Fert.

### TRACTORS

- Case IH 685 low hours, nice
- Case IH 495 4x4 w/Loader
- Case IH 265 offset, hi-clear
- IH 986, cab, low hours, 1977
- IH 274 offset w/cultivator
- IH 340 gas uty FH
- IH 330 uty gas, FH
- JD 2555 w/canopy, hi-low, low hours
- JD 4020 D side console
- JD 3020 D powershift
- JD 3020 D try, console
- JD 301G low utility w/reverser
- JD 302D low utility
- 2) JD 50 w/WF 3pt. loader
- JD AR, restored, nice
- 4) JD B, tractor
- JD 'D', pto - new tires
- JD MT
- 3) JD H tractor
- Ford NH 3930 w/canopy
- Ford 2600 Diesel w/Loader
- Ford 2000 gas, p.s.
- Ford 860
- Case/David Brown 885 diesel, nice
- AC D17 Series IV Gas, Wide Front
- AC WD 45 diesel
- AC C
- 2) Farmall 560 gas, wide front, FH
- Farmall Cub, any attach. available
- Farmall Super MTA w/wide front
- Farmall Super C w/FH
- Farmall C w/ltr
- 4) Farmall 140 most attach available
- Farmall Super A-1 w/sickle mower
- Farmall 100 w/FH & cultivator
- Farmall Super A w/cultivator
- Farmall M

### ROTARY and SICKLE MOWERS

- Woods HD 315 15' Batwing, 1000 PTO
- Woods 3180 15' Batwing
- Woods 2126 10' Mower
- Woods 208 8' Pull Mower
- Woods 7' 3 pt. Brushbull
- Woods 5', 6' and 7' rear discharge estate
- Woods 59 for Cub & A
- IH 5 1/2' Pull Rotary
- JD 6' Pull Rotary
- Rhino 10' rotary mower
- Bush Hog 3126 10 1/2' rotary
- Bush Hog 8' Pull Offset Mower
- Mott & Ford 88" 3 pt. Flail Mower
- King Kutter 5' 3 pt., 6' 3pt. Rotary
- Super A & Cub Sickle Mower
- Ford 515 3 pt. Sickle
- JD 50 Side Mt. Sickle
- JD 240 5' 3 pt disc Mower
- Kuhn 6 1/2' 3 pt. Disc Mower (Sharp)
- Kuhn 7' 3 pt. disc mower, sharp
- 3) JD 350 7' and 9' 3 pt Sickle
- 2) IH 7' Fast Hitch Sickle
- IH 7' 3 pt. Sickle
- 2) NH 455 Pull Type Sickle
- Haban 5' 3pt. Sickle Mower

### HAYBINES

- JD 1460 Discbine
- JD 1209 9' Haybine
- IH 990 7' Haybine
- NH 472 7' Haybine
- NH 478 7' Haybine

### MISCELLANEOUS

- 2) JD 6x4 diesel Gator
- JD 6x4 Gator
- JD 4x2 Gator
- 18.4x38 and 20.8x38 Open Center Duals
- Axle Duals to Fit JD 7400
- 60" & 72" Woods 3 Pt Rototiller
- NH 38 Flail Chopper
- JD 16A flail chopper
- Brady 722 Flail Chopper
- 13' 3 pt. Perfecta Harrow
- Corn Pro 12' Stock/Horse Trailer
- Corn Pro 16' Stock Trailer
- Degelman Rock Picker
- Danuser post-hole digger & others
- Cub & Super A cultivators
- Krause 10' landsman
- Several Loaders Including IH 2250
- Several HD 8' 3pt Blades
- Several Plows
- Several Gravity Bin Wagons
- JD 1065 wagon gears
- Arps 90 3 pt backhoe
- Woods 6500 & 7500 3 pt. backhoe attachment
- Case 1816B Skid Loader
- NH LS190 Skid Loader, low hours, sharp
- Bobcat 530 Diesel Skid Loader
- Artsway 15' Stalk Shredder
- Brillion 8' packer/seeder

### CORNPLANTERS

- AC 300 2R 3 pt. w/no tils
- IH 56 4R planter
- 6) JD 71 ground drive units
- JD 7200 6RN, dry, min-til
- JD 1240 4RN
- IH & Cole IR 1pt FH
- MF 2R 3 pt. Planter

### BALERS and RAKES

- Hesston 530 small round baler
- Ford NH 575 (sharp)
- JD 375 round baler
- MF 124 w/thrower
- NH 68 and Super 66, and 67
- NH 273 w/Thrower
- NI 484 round baler
- JD 672 w/dolly
- JD 350 3 pt. hay rake
- NI 402 w/dolly
- MF rake
- Zimmerman 7' hay tedder
- NH 254 3 pt rake tedder

### CULTIPACKERS & MULCHERS

- 2) Brillion 15' cultmulcher
- Brillion 14' cultmulcher
- Dunham 12' cultmulcher
- Brillion 10' cultmulcher
- Brillion 5 1/2' cultmulcher
- Hugo 14' roller/harrow combination
- Brillion 10' packer w/end transport
- 5) Brillion 12' packer, 2 w/end transport
- Brillion 25' x fold crowsfoot
- Brillion 21' x-fold packer (like new)
- Brillion 3' packer pups
- JD 12' packer
- Dunham 10' & 12' Packer

### ELEVATORS

- Buffalo Valley 20' corn & hay
- Farmec 30' corn & hay
- Hayrite 16' skeleton conveyor
- NH 75' skeleton conveyor
- Zimmerman 36', 40' & 46' corn & hay

## FARM TRACTOR PARTS

800-451-5240 (717) 866-2135 fax 717-866-7866

Mon.-Fri. 7:30 AM to 5:00 PM • Sat. 7:30 to Noon

[www.wenglers.com](http://www.wenglers.com)

order used, reconditioned, or new parts online

### RECENTLY ARRIVED FOR SALVAGE

IH 656 Kubota L175 MF 135  
 Kubota B6200 Kubota L2550 MF 180

[tractorparts@wenglers.com](mailto:tractorparts@wenglers.com)

