

## Potter Joins White Oak Mills

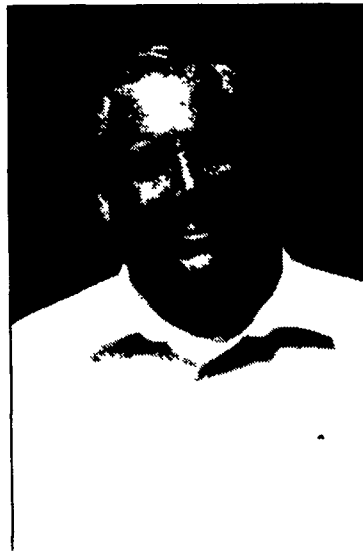
ELIZABETHTOWN (Lancaster Co.) — White Oak Mills Inc. has announced the addition of Randy Potter, of Greencastle, to its dairy team.

Focusing his efforts in Adams, Cumberland and Franklin counties, as well as in northern Maryland, he will concentrate specifically on meeting dairy producer's feed and management needs. He will serve as a White Oak Mills dairy specialist.

Following his three years of service in the U.S. Army, two years of which he was stationed in Germany, Potter served as an electrician at the Letterkenny Army Depot.

Potter did missionary work in Guatemala for 12 years. During his time in Guatemala, he assisted with the planting and harvesting of corn and sesame on a 44-acre farm and taught a small Brown Swiss dairy producer how to make corn silage. Potter is bilingual in English and Spanish.

Since 1999, he has served as a seventh through 10th grade teacher for Antrim Mennonite School, Greencastle, and worked with an independent



Randy Potter

dairy mineral representative during the summer months.

"Randy's character traits, skills and desire to learn make him a welcome addition to our dairy team," says Brad Wagner, White Oak Mills dairy sales manager. "He'll be an integral part of White Oak's plan to increase the amount of dairy service provided to the industry."

## New Massey Ferguson Tractor Offers Advanced Performance Features

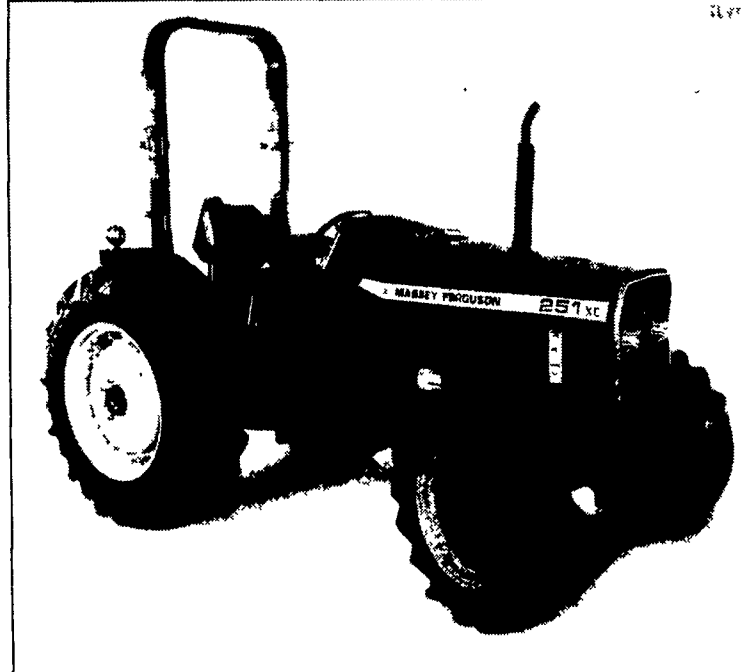
ATLANTA, Ga. — Massey Ferguson's new 45 PTO horsepower MF 251XE utility tractor offers a combination of advanced engine, transmission, hydraulics, PTO and two- and four-wheel drive features that meet the increased application needs of farmers and landscaping and turf maintenance specialists.

The new MF 251XE is powered by a fuel-efficient three-cylinder Perkins diesel engine with a Fastram® combustion system that converts more fuel to energy. "This engine delivers unequaled torque, efficiency and reliability for tillage, planting, mowing, hauling, grading and chores," said Tim Wagner, Massey Ferguson general marketing manager. "Its unique long stroke design develops high torque at low engine rpm's for added lugging power without constant gear changes."

An eight-speed manual transmission features sliding gears with planetary reduction to provide eight forward and two reverse speeds. Two speeds are used for slow operations, four are working speeds for farm, landscaping and turf operations, and two high-speed gears are used for transport.

The MF 251XE is equipped to handle a wide range of applications with a Category I three-point hitch and advanced Ferguson® system hydraulics for precise implement control. A draft-sensing top link provides draft response to maintain an even working depth, and the position control lets the operator set and maintain the implement position.

A dual-stage foot clutch controls both the transmission and the live 540 PTO. PTO speed is achieved at a low 1908 engine rpm, allowing the engine to run at a higher torque rating under



Massey Ferguson's new 45 PTO utility tractor.

full load to help prevent lug down and the need to change ground speed.

The MF 251XE is available in both two- and four-wheel drive models. The two-wheel drive tractor uses a telescopic box-in-box design front axle with a 50-

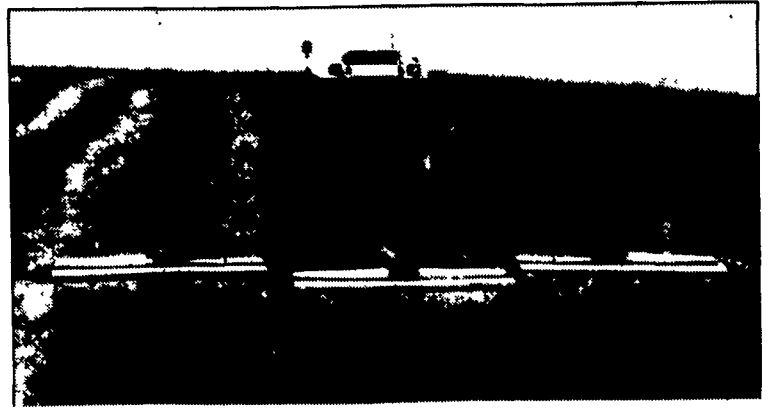
ATLANTA, Ga. — Fendt is adding another reverse station model to its line of heavyweight fixed-frame tractors. Weighing in at nearly nine tons, the 160 PTO horsepower Fendt Vario® 918 Reverse Station from Agco Corporation offers one of the highest horsepower-to-weight ratios in the tractor market today, along with unsurpassed flexibility.

The four-wheel drive 918 is designed to handle big equipment with ease where lighter tractors might be pushed around. Its turntable-mounted seat, steering wheel and armrest control panel allow operating the tractor in either direction depending on implement selection.

"The 918 Reverse Station has the power and the weight to handle 20- to 30-foot mower conditioners or large forage harvesters with control and maneuverability that exceeds single-purpose, self-propelled units," says Kevin Bien, general marketing manager. "Mounting heavy implements on the rear axle ensures better balance and handling, and unsurpassed visibility."

Like other members of the Fendt Vario 900 Series, the 918 Reverse Station is loaded with innovative features. The stepless continuously variable transmission (CVT) offers infinite speed selection up to 31 mph in forward gear and up to 15.5 mph in reverse. The three-phase suspension system produces a safer and less tiring ride in the field or over rough roads. The power

## Fendt Adds New Reverse Station Model



The Fendt 918 Reverse Station outperforms single-purpose, self-propelled units with unsurpassed flexibility, maneuverability and visibility.

transfer system with intelligent four-wheel drive and differential locking control puts more horsepower to the drawbar than any comparable horsepower tractor.

"Automatic four-wheel drive and differential lock engagement provide operator relief, easy maneuvering and greater transfer of power as needed," says Blake Gendebien, sales engineer. "For maximum transfer of power, they can permanently engage four-wheel drive and/or front and rear differentials."

The Fendt 918 hydraulic system with its electro hydraulic controls automatically compen-

sates for pressure and flow. It comes with four-hydraulic remotes that produce 30 gpm flow for maximum capacity plus one set of front-mounted couplers as a factory-installed option.

The 918 Reverse Station offers a 64- to 88-inch tread adjustment and comes standard with premium Michelin tires. The rear three-point lift capacity is 15,600 pounds at 24 inches. An optional front-mounted three-point lift has an 8,000 pound capacity and allows quick switching of up to two tons of counterweight from front to back to properly balance the tractor for any use.



The new Hesston 700 Series Rounder® balers set a new standard for high performance at an economical cost.

## New Value-Priced Models Round Out Hesston Baler Line

ATLANTA, Ga. — The new Hesston 700 Series Rounder® balers are designed to produce high-density round bales of 39 or 47 inches in width by up to 52 inches tall (990 or 1200 millimeters wide by up to 1320 millimeters tall) at a very economical overall cost.

"The Hesston 730 and 740 balers have the superior features and quality farmers have come to expect from Hesston," reports Eric Raby, Hesston general marketing manager, "at a price that makes them competitive with any other baler on the market. These balers are particularly well suited for first-time buyers and smaller growers with limited budgets and tractors. For about the price of a good used machine, they get the reliability and performance of a new Hesston baler. This is particularly appealing to weekend farmers

who need big performance and big bales, but don't have the time to deal with used-equipment breakdowns."

Both the Hesston 730 and 740 Rounder balers feature the open-throat, vertical-bale-chamber design found on Hesston's premium balers. This ensures quick, sure bale starts and excellent capacity, without the need for a special floor roller and its resulting problems and maintenance. In addition, separate bale and belt tensioners ensure tighter bales while also keeping the belts snug during bale dumping to prevent damage caused by slack belts. The 740 features hydraulic tension, while the 730 has spring tension. For short, dry crops, a filler plate improves bale shape, while a pickup de-clutcher prevents making oversize bales.

## JD Mini-Frame Z-Traks Zip Through Jobs

TRIANGLE PARK, N.C. — Commercial operators will zoom through jobs with precision and efficiency with John Deere 717 and 727 Mini-Frame Z-Traks®. The zero-turning-radius on these machines increases productivity and adds control, while the smaller frame requires less trailer space and boosts maneuverability on tight jobs.

Durability is key in commercial mowing and the 717 and 727 have it with their deep-deck

mowers, made with seven-gauge steel and powerful vacuuming action that lifts grass before cutting and handles more material.

Made for the high-usage commercial market, these mowers are ideal for apartment and other residential properties, business and industrial complexes, and many others.

The 717 model has a 19-hp, air-cooled Kawasaki gas engine with a 48-inch commercial mower 7-Iron® deck; the 727

model is powered by a 23-hp, air-cooled Kawasaki and mows with a 54-inch 7-Iron deck.

Both models have overhead valve design that offer more horsepower and torque per cubic inch of displacement, better fuel efficiency and minimized noise.

The two-lever drive control allows operators to select ground speed and direction by simply moving the levers forward and reverse.

With an eight U.S.-gallon fuel tank, operators can mow all day on one tank of gas. The top draw tank increases safety, while the large filler neck makes for easier refueling.

Both the 717 and 727 come with 23 by 9.5-12, 4PR drive tires and 13 by 5 by 6 front caster wheels that provide excellent traction, floatation and curb climbing as well as a low center of gravity to increase hillside moving capabilities.