

# SCENIC VIEW WELDING

Specializing in Custom Built Storage Shed Trailers & Repairs

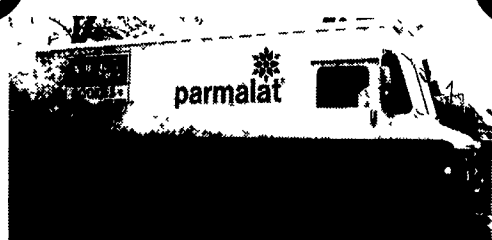
- Trailer Parts & Accessories
- LED Lights
- Brake Controllers



- Hitch Products & Installation
- Deka Batteries
- Hi Lift Jacks

2"x27 ft Ratchet Strap \$16.00 Set

5509 Lincoln Hwy, Gap, PA 17527  
717-442-1967

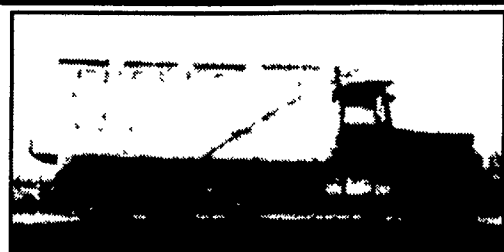


## 1986 GMC

16' Grumman Olson Aluminum Step Van  
10,000# GVW, 350 V-8 Engine,  
3-Speed Automatic Transmission

**\$3500**

717-859-2788



1993 Ford Tri-Axle Dump, 425 HP Cat, 8LL  
Sp. Trans., 19' Alum. Body, Call For More  
Details, Asking \$42,900 OBO • 888/828-3429

Sliding Tandem by Binkley, 4 spring, Budds, off  
1997 Trailmobile Reefer 102" auto slack adj. Very  
good. \$500 OBO

Clark HWP 40 Electric Pallet Jack, 4000# good 12  
Volt battery and 120V charger, Good condition  
\$750. OBO

Moto Truc Reach Lift Electric MO# X-TEND-R  
Stand On type 3000# \$750.

(3) 900X20 Drive Tires good tread \$20 EA

(20) Steel disk wheels 24.5 hub pilot and stud pilot  
some reconditioned \$25. EA OBO

Pullrite Trailer Equalizing Hitch almost new  
\$500 OBO

(3) Trailer Loading Ramps all Fiberglass 13' long  
2' wide 1500# capacity each Anti Skid Surface  
\$100. Each

Lincoln Arc Welder AC 225 amp \$100

Please call Steve@ 800/752-1902, 717/362-8117  
Mon. - Fri. 8 AM - 5 PM or 717/362-3678 nights  
and weekends

## INJECTORS

Have you serviced yours?

### Bad Injectors Cause:

- Excessive Fuel Consumption
- Poor Starting
- Loss Of Power
- Misfiring
- Black Smoke
- Overheating

### So service them regularly!

As always, injectors are checked  
free of charge

### PENN DIESEL SERVICE CO.

Diesel Technology Center



Factory Authorized  
Fuel Systems &  
Turbochargers Specialists

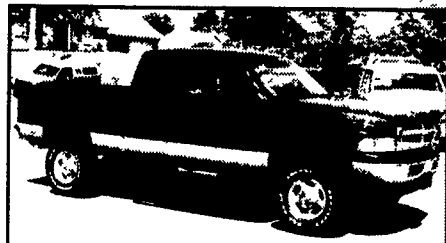


Parts & Equipment Distributors

Exit 77 Interstate 81  
337 N. Fairville Ave.  
Harrisburg, PA 17112  
Web: www.pennsdiesel.com  
E-mail: pennsdiesel@hotmail.com

800-535-2913  
717-545-4207  
Fax: 717-545-0115

## DIESEL TRUCKS



### HOLIDAY DEALS

- 01 Ford F-350 Crew Lariat, 4x4, AT, 9K miles
- 01 Ford F-350 Quad Lariat 4x4, AT, 51K Miles
- 99 Ford F-350 Crew Lariat 4x4, AT, \$26,900
- 90 Ford F-250 Ext Cab, XLT, 4x4, AT, \$8,995
- 01 Dodge 3500 Quad Cab SLT, 4x4, 6 Spd, \$26,900
- 01 Dodge 2500 Quad Sht Bed 4x4, 5 Spd, 36K Miles
- 01 Dodge 2500 Quad Sht Bed, 4x4 6 Sp, 33K Miles
- 01 Dodge 2500 Quad Sht Bed, 4x4 AT, 38K Miles
- 99 Dodge 3500 Quad Dually, SLT, 4x2 AT, 48K Miles
- 98 Dodge 2500 Quad Lg Bed, 4x4 AT, 87K Miles
- 96 Dodge 3500 Club, Dually SLT, 4x4, AT, \$18,900
- 95 Dodge 2500 Reg Cab SLT 4x4, AT, 2 To Choose

All Reasonable Offers Will Be  
Considered!!

### McNamara Cars & Trucks

Dennis McNamara • 2 miles South of I-78 on Rt 61  
877-965-0290  
www.mcnamaratrucksrus.com

## FOR SALE:

### 85 EAGER BEAVER TRAILER

8x16 Deck w/4.5' beavertail & ramps.  
Frame sandblasted & painted, new tires,  
new elec. brakes, new 2" deck.

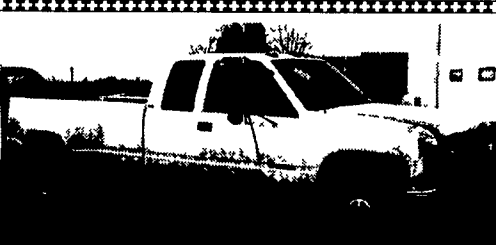
**\$6,500 neg. 610-383-7042**



78 Int., 350 Cummins, Jake,  
6 Speed, 5000 Gal Vac. Tank.  
570/658-2881



'96 Int, 79,000 mi, 370 Cummins, AC,  
Engine brake, 8LL trans, low gears, air gate, elec  
tarp, ex. cond. Axles: Front 20,000, Rear 46,000  
717-859-3128 No Sunday Calls



**95 Chevrolet K3500 Silverado**  
Ext. Cab, 2WD, 454, AT, A/C, AM/FM Cass,  
Tilt/Cruise, PW, PDL, P Seat, 94K Mi.,  
Hit Front & Light Rear **\$6,200 OBO**  
717-355-0644  
**Anthony Landis Auto**

- 1999 Ford F350, 4WD, crew cab, dually,  
dsl, 38,000 mi. ....\$28,800
  - 1986 Chevy C70, gas .....\$7,500
  - 1984 Ford F350 w/snow plow, dsl .....\$6,000
  - 1979 Chevy 1-ton w/snow plow .....\$5,000
  - 1970 Int. tandem road tractor .....\$2,200
  - 1978 Jeep Grand Wagoneer  
w/snow plow .....\$1,800
  - 1970 Diamond Reo triaxle  
drump truck .....\$7,500
  - 82 Chevy C70 dump truck, dsl .....\$4,900
  - 82 GMC 6000 w/snow plow .....\$3,000
- Clair Becker 814-935-7048**

### IN STOCK

**CORNPRO**  
**GOOSENECK 20+5 FLATBED**  
14,000 GVW  
2 In Stock  
SPECIAL \$4,975 each

### STOCK TRAILERS

### SKID LOADER TRAILERS

Also Nice Selection of Pequea Trailers In Stock



Rt. 22 West, Fredericksburg, PA  
717-865-7575

35

### TRUCKS AND TRAILERS

'96 Ford XLT Ranger  
short bed, 4 cyl., 5 spd,  
PS, PB, air, AM-FM cassette,  
new radials, 69,000  
miles, black, \$4,975.  
717-733-2873

'99 Dodge 2500 12 pass.,  
318 auto, PS, PB, dual air,  
AM-FM cassette, 24,000  
miles, burgundy, \$12,900.  
717-733-2873

'99 Dodge 3500 15 pass.  
maxi, 318 auto, PS, PB,  
AM-FM, dual air, 93,000  
miles, white, \$9,900.  
717-733-2873

'93 Dodge LE 250 club cab  
pu, 2WD, 360 auto, PS, PB,  
PW, PDL, cruise, tilt, air,  
410 ratio, towing package,  
59,000 one owner  
miles, blue & silver, excel-  
lent condition, \$8,975.  
717-733-2873

'99 Dodge 1500 short whl  
base, 8 pass., 3.9 V6, auto,  
PS, PB, PW, PDL, AM/  
FM/CD, cruise, tilt, air,  
40,000 miles, new Micheli-  
lins, dark green, \$11,900.  
717-733-2873

Septic vacuum truck,  
1991, Ford, 2300 gal tank  
w/vacuum pump, 5 years  
old. 717-432-3514

Used tractors: 91 Pete  
Model 378 day cab; 89  
Pete model 378, 36" sleep-  
er; 88 Pete model 378 day  
cab; 85 Pete model 359  
day cab; 79 Pete model  
352 cab-over.  
717/626-2599 ext. 3048

'97 Freightliner FL50,  
cab/chassis, 18,000 GVW,  
250hp, AC, PS, PB, auto,  
40,000 miles on replace-  
ment motor, 331 rear,  
\$18,000. 570-847-1001

'97 Ford F350 XLT, dsl, 4  
door, auto, 140,000 mi, ex  
c o n d , \$ 1 7 , 5 0 0 .  
570-847-1001

2002 16' gooseneck stock  
trailer, \$3800.  
717/464-3219

80 Dodge truck, 12' alum.  
cattle body, 78k mi., in-  
spect. 717-865-4650

1999 Ford F250 Super  
Duty, 4x4, ext cab, power  
stroke, 77K, loaded w/all  
options, sharp truck,  
\$19,900. 717-336-7375.

Flatbed trailer, 40', 1973,  
Trailmobile, 58,600 GVW,  
good cond, \$2,000 OBO.  
410-357-9976.

1987 CF7000 Ford cab-  
over 20' flatbed dump,  
29,500 gvw, good rubber,  
new inspection, \$4500  
OBO. 570/992-3700  
7am-5pm

1976 Ford 750 cab & chas-  
sis, 14' stake body avail-  
able. 717-687-7631

1981 Ford L800, 41,000 lb  
GVW, 370 hp eng, 5 + 2,  
Eaton trans, air brakes,  
Hendrickson spring &  
bean suspension, on  
34,000 lb Eaton rears w/  
diff a lock, 140" useable  
CA, 58,000 org mi, \$4,900  
OBO. Former municiple  
truck. 814-359-4500.

16 aluminum dump trail-  
ers from 26' to 34'.  
610-921-3597.

### Wanted

Chevy Crew  
Cabs In Good  
Cond. For Work  
Trucks

410-833-5345

### PICKUP SEAT

\$399.00 • FULL SIZE TRUCKS  
FOR FACTORY • RECLINES!



• FOLD DOWN  
DRINK CONSOLE

CALL FOR COLOR BROCHURE!

1-301-864-1079

Emerson Seating

PO BOX 283 • HYATTSVILLE MD 20781

### MARTIN'S USED TRUCKS & EQUIPMENT INC.

560 Lampeter Rd., Lancaster, Pa. 17602  
Robert Martin (717) 392-6266 • (717) 299-6200  
Reefers • Vans • Flatbeds • Used Parts

WE SERVICE WHAT WE SELL



1995 GMC Topkick, Cat Diesel,  
5 Speed, 25,950 GVW, 20 Ft. Van  
Lift Gate, Clean \$14,500



1997 GMC W4 Turbo Diesel,  
AT, 15,000 GVW, 16 ft Flat Bed  
with Lift gate 94,000 mi Ex Cond  
\$13,900



98 Freightliner FL-70, Cummins  
Diesel, 6 Spd, A/C, 26,000 GVW,  
Only 61,000 Miles, NEW 24 Ft  
Morgan Van Body \$24,500



95 IH 4900 DT466,  
6 speed, A/C, 25,500 GVW (No  
CDL), 24 ft Van Lift Gate, Very  
Clean \$16,900



1995 IH 4900 DT466,  
5 Spd, A/C, 25,500 GVW, 130,000  
Miles, High Level Interior, Excellent/  
Clean Cab & Chassis \$16,500



1996 GMC W-4, Turbo Diesel, A/C,  
14,250 GVW, 15 Ft. Van, Pull Out  
Ramp \$12,500



Reefer & Van Bodies & LIR Gates,  
14 ft. - 26 ft., Ex. Cond.  
Call For Price



1986 Ford F350  
Diesel, 4 Speed, 12,000 GVW,  
85,000 Miles, 12 Ft. Stake Body  
Dump Clean \$6,500



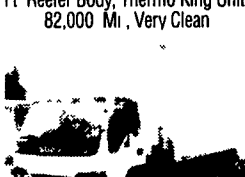
1997 GMC W-4 350 FI., Auto, A/C,  
14,250 GVW, 53,000 Mi. Very  
Clean Will Take 10 Ft. or 12 Ft  
Body Price \$13,900



1997 GMC W-4  
350 FI., Auto, A/C, 14,250 GVW 14  
Ft. Reefer Body, Thermo King Unit,  
82,000 Mi., Very Clean



1995 GMC Top Kick 215 HP Cat  
Diesel, 6 Speed, 33,000 GVW w/or  
Without 22 ft. Morgan Reefer Body,  
7/King - MDII, E-stand By Excellent  
Condition \$17,900



1998 GMC W-4  
Heavy Duty 350 FI. Auto, 15,000  
GVW, A/C, 18 Ft. Van, Only 31,000  
Mi., Excellent Condition \$17,800