

35

TRUCKS AND TRAILERS

87 Freightliner twin screw trac., 545,000 mi, current insp, \$7500. 610/689-5346

76 Mack 10 wheeler Steel Dump, 6spd., 10x20 tires, 16' body, engine needs repair, \$3,800 Firm. 215-357-1123.

88 Auto Car, DK64, chassis & cab, tri-axle, Cummins 315, 8spd, 52 rears, front tires 425-65R22-5, rear tires 1100R22-5, \$8,500. 215-357-1123.

89 Ford F350, 7.3ft. diesel motor, 4wd w/snowplow, utility body truck, many new parts, good cond., \$6,800. 610-754-0796.

1970 MACK dump truck dsl, S/A, pintel, no rust in cab, many new parts, \$3,900 OBO. 717-367-2876.

1986 Chevy P/U, 4WD, 350, runs good but rough, \$950. No Sunday calls. 717-285-5267.

SS Tank trailers, 5 & 6000 gal, ideal for liq fert, water or liq manure, reasonable. 302-324-9646

5000 Gal White manure truck, \$6800 obo. Better Blit 2500 vac tank spreader, \$2800 obo. 215-348-5514

4800 gal. alum tank, good tires & brakes, 3 inch Roper hyd pump, good for farm use, \$4500. 800-592-9577

16' Pequea TA trailer, 7000 gvw w/ramp, \$2000; 2000 20' Burkholder TA trailer w/ramp on back & front, 7000 gvw, \$2700; 87 Ford F350 4x4, dually flat-bed w/sides, 8300 mi, \$3000. 717-768-7618

'84 int'l 1600, extended cab, western body, 7.3 dsl, \$6500. 856-935-7642

Mack B81 tandem dump, 237 engine, good site truck or part out, \$3000 OBO. 609-921-1619

1954 B30 Mack, hyd brakes, 18' steel bed, 5+2, \$1,200 OBO. Eves 610-258-9818.

Hyster 35 ton detachable low boy trailer, \$7500. AC 645 loader, \$13,500 obo 610-944-9871, cell 610-858-4092

'86 Accurate trash transfer trailer, 40 ft, good cond., \$7000 obo. 717-872-9152

SAVE. STORAGE OR ROAD TRAILERS, 20' or 40' GROUND LEVEL CONTAINERS. PROMPT & COURTEOUS SERVICE. REASONABLE RATES. YOUR STORAGE SOLUTION, INC. 610/921-1955, 1/800-220-6082

'99 Dodge Ram 2500 SLT Cummins, 24 valve, turbo dsl, 5 spd, cloth interior, gooseneck hitch, club cab, 4x4, AmFm, cass, CD, 60k mi, \$23,500. Call after 6pm, 610-987-6463.

Vis A Vis white, red seats, lights, slides, brakes, \$2000. 609-261-0897

'71 Ford F600 w/post hole digger, in fair cond to good condition. '85 Dorsey flatbed trailer. 717-694-3340

89 Dodge 250, 4wd, alum. dump bed, Myers pwr. angle plow, \$6,500. 717-527-2822.

85 Mack Mid-Liner, 200K miles, no rust, 30,000 GVW, \$1,250. 717-867-4896.

'68 IH w/14 ft Midwest grain dump, good cond, \$2200. 12V hyd tail gate w/bumper hitch for service body, \$385. 717-534-1253

'99 Eby gooseneck cattle trailer Maverick 20'Lx6'8"Wx7'H, center divider, side door, \$9,000. After 6pm, 610-987-6463.

2000 IH 4700 series, DT 466, 230 hp eng, auto, A/C, alum wheels, 12' alum dump, 800 mi, 25,900 GVW. \$44,000. 610-837-0791.

'97 Chevy Cheyenne 2500, extended cab, 2WD, 350 auto, air, 8,600 GVW w/8' Reading utility body, 80,000 one owner miles, new tires, red, \$12,500. 717-733-2873

12.7 series 60, 430/500 hp \$8,500. 11.1 series 60, 365 hp, \$4,000. 717-733-3890.

1988 Peterbilt 362 Cabover, 425 CAT, 15 spd trans, very good cond, 1 owner, asking \$8,500. Call Riser's Poultry between 8am-5pm @ 717-626-5466.

1987 Ford Triaxle, 8L trans., new brakes, LIO \$18,500. 610-944-9576.

'86 Isuzu NPR dsl truck, manual trans, 11,000 GVW, 181,700 mi, good cond, \$3500. 17 ft box van body (former Matco tool body) AC & Heat, walk-in hyd tailgate, \$3000. 814-793-4077

18' insulated van box, side dr, rollup rear dr, good cond, \$1,200 OBO. '71 Chevy C60 truck, 16' Morgan body, 427 eng, 5+2, for parts, \$500. 717-367-5404.

1990 GMC, new 3116 Cat eng, 5 spd, A/C, air brakes, 25,500 GVW, no CDL needed, 22' Morgan box, good cond, \$12,900 OBO. 717-367-5404.

1978 Freuhauf 38ft dump trailer, Jersey spread, ex cond, \$9000. 1978 Freuhauf open top tipper trailer, 42ft. \$3500. 814-354-2877

'99 Dodge 1500 Prime Time Conversion Van, 318 auto, PS, PB, PW, PDL, cruise, tilt, air, new radials, 52,000 miles, dark green, excellent condition, \$10,900. 717-733-2873

'98 Dodge 2500 12 pass. van, 318 auto, PS, PB, PW, PDL, cruise, tilt, dual air, AM-FM cassette, red, 52,000 miles, excellent condition, \$11,900. 717-733-2873

'98 Dodge 1500 short whl. base, 8 pass. van, 3.9 V6, auto, PS, PB, PW, PDL, cruise, tilt, air, 39,000 miles, 2 tone blue, excellent condition, \$10,900. 717-733-2873

'01 Dodge 3500 15 pass. 360 auto, PS, PB, PW, PDL, cruise, tilt, dual air, AM-FM cassette, 21,000 miles w/balance of factory warranty, maroon, \$17,900. 717-733-2873

1999 gooseneck stock trailer, 7' tall 6.6 wide, lined, mats, breakaway, 4 WB, like new, has never been fitted or tagged, \$4,500. Call after 6pm, 410-287-9597.

'99 Dodge 2500 quad cab, 2WD, 360 auto, PS, PB, cruise, tilt, air, AM-FM cassette, 8,800 GVW, 410 ratio limited slip diff, towing package, 96,000 hwy. miles, new radials, ex. condition, \$11,500. 717-733-2873

86 Ford diesel dually, crew cab, rear seat bed retractable ball in bed, 5-spd, cruise, needs eng. work. 215/257-3354

1995 379 Pete, 3 yrs 300,000 mi. eng. warr. from Detroit, stand-up sleeper, dual everything. Truck is being run 2000+ mi./wk. \$33,000. 215/453-8974

1982 40' Tempte, hopper bottom trlr., hatch top, \$3,500. 540-972-1738.

1976 East Dump Trailer, 30-32', alum. tub & frame, \$9,850. 540-972-1738.

1976 Ford truck, auto, gas engine, F700, carrying diesel powered compressor, \$750 OBO. FMC cherry picker, 4-cyl. gas engine, tri-wheeled, \$500. 410-399-4029

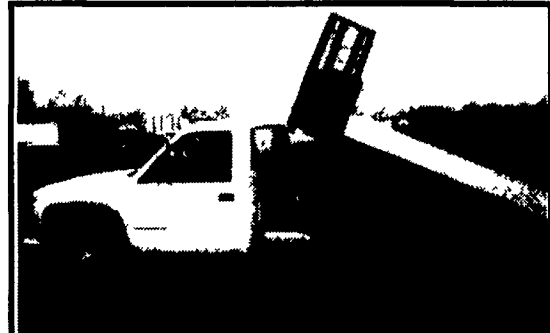
'87 MS300T Mack single axle tractor, 220hp diesel, 6 speed, 33,000# GVWR, 225"-138" WB, \$3950 obo. 301-733-1707 Harold Jones ext 107

(8) Storage Trailers, 45'-48', \$1,300-\$1,800. Call 717-295-2442 ext. 119.

1988 Eager Beaver 20 ton tandem, \$5,500. 1987 Eager Beaver 20 ton tandem axle \$4,800. 1979 General 20 ton, tandem, \$3,900. (Located in Stevens, PA) 410-688-2739.

WANT 1977-1979 Ford 8' truck bed. 1997-2000 Ford 16" aluminum rims. 610-682-4498.

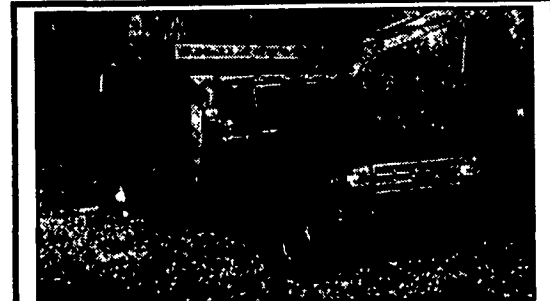
Dump trailers, 28 ft alum steel frame, straight, no holes, good rubber/brakes, \$5000/ea obo. Hunterdon. 908-730-8100
Smithco 10yrd. concrete mixer, trailer mounted, 353 Detroit power, \$4,500. 215-357-1123.



1992 Chevy 3500 HD
15,000 lb GVW, 30K Miles, Auto, 6.5 Turbo Diesel, New Dump System, \$12,900
610/476-3583



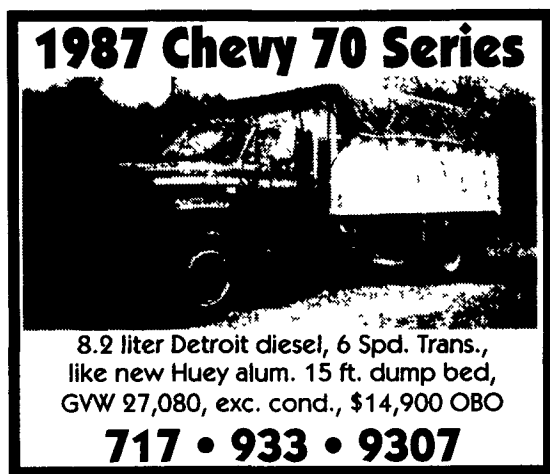
1986 IH Paystar 5000 4250 Gal.
Diller Tank, 400 BC, 8LL Trans, 60K Rears, 25K Front Axle, New Tires, All New Hyd. System **\$29,500**
724/564-5789



1990 Ford F-450 dump, 7.3L Diesel, 5 spd, 164K miles, Pindle, Class 3 receiver, Electric brake control, Semi Auto Tarp system, Alum L-pack, Very Good Condition, Best Offer
Berks 610-987-6880



1987 Freightliner
Double Frame Ready For 22 Ft. - 24 Ft. Dump Bed or Silage Box
\$10,900 OBO
(570) 539-8508



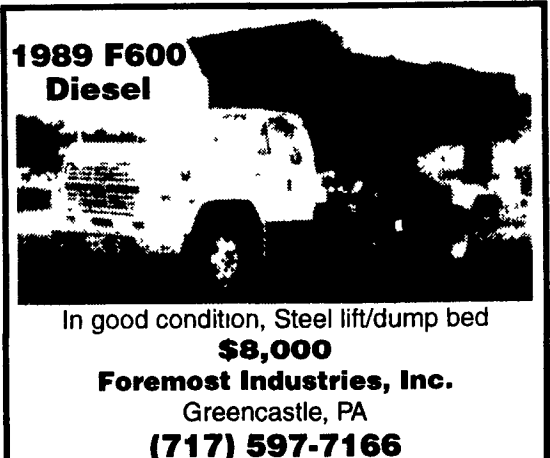
1987 Chevy 70 Series
8.2 liter Detroit diesel, 6 Spd. Trans., like new Huey alum. 15 ft. dump bed, GVW 27,080, exc. cond., \$14,900 OBO
717 • 933 • 9307



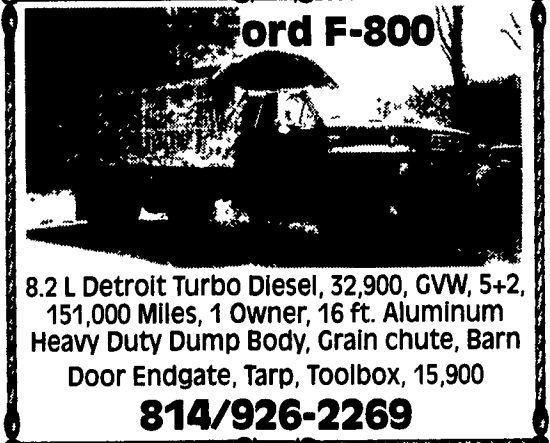
2001 Freightliner Argosy COE
500 HP Detroit, Jake 13 Spd., Air-Ride Cab, Suspension, and Seats, Dual Exhaust, Electric Heated Mirrors, Owner-Operator Specs 70K Miles.
\$50,000 540/896-6946



Truck for SALE
1999 Chevrolet
3500 4x4 Dually- Crew Cab
350/5.7 Liter Engine,
Auto Transmission (needs work)
\$ 12,000
Call Paul at (717) 354-2613



1989 F600 Diesel
In good condition, Steel lift/dump bed
\$8,000
Foremost Industries, Inc.
Greencastle, PA
(717) 597-7166



Ford F-800
8.2 L Detroit Turbo Diesel, 32,900, GVW, 5+2, 151,000 Miles, 1 Owner, 16 ft. Aluminum Heavy Duty Dump Body, Grain chute, Barn Door Endgate, Tarp, Toolbox, 15,900
814/926-2269



1980 White
350 Cummins, 4600 Gallon Pressure/Vacuum system
Good condition
\$23,500 717-274-6608



FOR SALE
\$6,900
91 White 3176 Cat. 350 H.P., 9 spd., Jake brake, Air ride
Call 717-354-4616



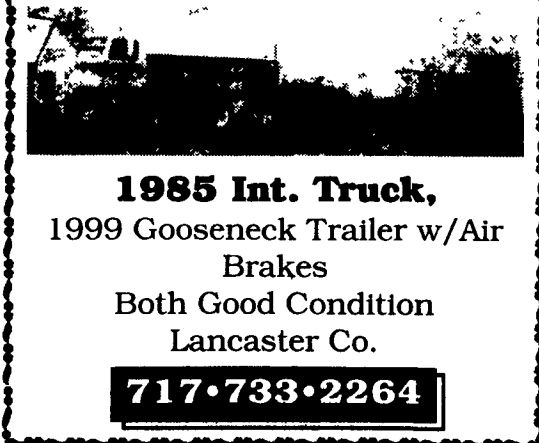
1983 Int. S - Series
350 Cummins with Jake
13 Speed - New Paint - New Tires
Asking \$11,000
814-886-9375



88 Ford F600
6.6 L. Dsl., 5 Spd., New Clutch,
Good Tires, 13' Aluminum Bed.
Good Running Condition.
\$6800 O.B.O. 717-656-2213



2000 Ford E-150 Van 37K, 4.2 Dual A/C, Privacy Glass, Loaded, Factory Black w/Grey Interior, Mint Condition
\$13,900
(315) 549-7664



1985 Int. Truck,
1999 Gooseneck Trailer w/Air Brakes
Both Good Condition
Lancaster Co.
717-733-2264