

**Virginia Livestock Auction Summary**

Richmond, Va.  
May 14, 2002

Report Supplied By USDA

**NORTHERN VIRGINIA LIVESTOCK** — Front Royal, Marshall, Rockingham, Shenandoah, Staunton Union, and Winchester for the week of May 6-11. All prices per hundred pounds liveweight (CWT.), except where noted.

**FEEDER CATTLE:** 1,320 head.  
**FEEDER STEERS:** Med. and Lge. 1: 200-300 lb 104.00; 300-400 lb 85-100.00 few 91-106.50; 40-500 lb 85-105.00 few 81.00; 500-600 lb 80-98.00; 600-700 lb 74-87.00; 700-800 lb 73-76.00; 800-900 lb 70.00. Small 1: 300-400 lb 59.50; 400-500 lb 60.00; 500-600 lb 53.50. Med. and Lge. 2: 200-300 lb 83-94.00; 300-400 lb 69.50-81.00; 400-500 lb 86-89.00; 500-600 lb 71-87.50; 600-700 lb 71.50; 700-800 lb 74.50; 900-1000 lb 62.75.

**HOLSTEIN STEERS:** Med. and Lge. 2: 500-600 lb 64-65.00.

**HEIFERS:** Med. and Lge. 1: 200-300 lb 92-107.00; 300-400 lb 78.50-91.00; 400-500 lb 72-85.00; 500-600 lb 69.50-84.00; 600-700 lb 69.50-76.00; 700-800 lb 65.25-70.50. Small 1: 300-400 lb 62.00; 400-500 lb 60.50-61.00; 500-600 lb 60-72.00; 600-700 lb 46.00. Med. and Lge. 2: 200-300 lb 80-82.50; 300-400 lb 65-78.50; 400-500 lb 68-82.00; 500-600 lb 63.50-78.00; 600-700 lb 64-69.00; 700-800 lb 60.00.

**BULLS:** Med. and Lge. 1: 200-300 lb 82-105.00; 300-400 lb 89.50-109.00 few 95-95.00; 400-500 lb 80-94.00; 00lb 72.25-86.00; 600-700 lb 67.50-75.00; 700-900 lb 67.00. Small 1: 300-400 lb 79.00; 400-500 lb 67-81.50; 500-600 lb 77.00. Med. and Lge. 2: 200-300 lb 87.00; 300-400 lb 74-86.25; 500-600 lb 73-90.00;

500-600 lb 70-81.00; 600-700 lb 67.75-74.00; 700-900 lb 55-57.00.

**SLAUGHTER CATTLE:** 605 head.  
**SLAUGHTER STEERS & HEIFERS:** 172 head. **STEERS:** Choice 2-3, 1000-1100 lb 64.75-67.00, 1100-1300 lb 65.75-68.25, 1300-1500 lb 65.25-70.00; Select 2-3, 1000-1100 lb 63.00, 1295 lb 62.00. **HOLSTEIN STEERS:** Choice 2-3, 1625 lb 56.00; Select 2-3, 1630 lb 52.50. **HEIFERS:** Choice em 2-3, 950-1100 lb 60-64.00, 1100-1300 lb 63.75-67.50, 1315-1380 lb 64.75-67.00; Select 2-3, 1215-1460 lb 57.53.00.

**BULLOCKS:** Select 1240-1300 lb 59.75-61.00.

**SLAUGHTER COWS:** 347 head. Breaking Utility and Commercial 2-4, 37-48.25; Cutter and Boning Utility 1-3, 35.50-51.00; Canner and Low Cutter 1-2, 30-41.00.

**SLAUGHTER BULLS:** 40 head. Yield Grade 1-2, 900-1300 lb 40-53.75, 1300-1600 lb 44.25-61.00, 1600 lb and over 47.50-63.25.

**COWS RETURNED TO FARMS:** 18 head. Mostly Med. and Lge. 1, 1000-1450 lb bred 4-7 months, 400 to 775 per head.

**COWS WITH CALVES AT SIDE:** 18 pairs. Mostly Med. and Lge. 1, 1100-1400 lbs with calves baby to 300 lbs, 750 to 1000 per pair.

**BABY CALVES RETURNED TO FARMS:** 75 head. Newborn to 4 weeks 25-130.00 per head; over 100 lbs 50-133.00 per cwt.

**SHEEP:** 161 head. **SLAUGHTER LAMBS:** 40 head. New Crop: Feeder, few Prime 1-2 few 3, 100-112 lbs 77-82.00; Good and few Choice 1-2, 85 lbs 83.50. Woolled: Choice few Prime 1-2 few 3, 100 lbs 71.00. **FEEDER LAMBS:** 86 head. Med. and Lge. 1-2: 70-85 lbs 80.50-86.00, 60-70 lbs 82-84.00, 50-60 lbs 80.00, 40-50

lbs 78.25; Small 1-2: 82 lbs 82.25. **SLAUGHTER EWES & RAMS:** 45 head. **EWES:** Choice 2-4, 18-27.50; Utility and Good 1-3, 23.25-27.75; Cull and Low Utility 1-2, 26.25-28.25.

**Marshall, Va. Graded Feeder Cattle Sale**

Warrenton, Va.  
May 14, 2002

Report Supplied By USDA

**STATE GRADED FEEDER CATTLE SALE** at Marshall, May 13 — 756 head. Prices per cwt. Weighted Averages. Price follows with average weights and average prices in parentheses where applicable.

**FEEDER STEERS:** 433 head. Med. and Lge. 1: 36 head, 400-500 lb (468 lb) 91-96.00 (94.64); 81 head, 500-600 lb (542 lb) 76-98.00 (88.53); 27 head, 600-700 lb (640 lb) 86.50-87.50 (87.28). Med. and Lge. 2: 20 head, 300-400 lb (385 lb) 100-100.50 (100.19); 55 head, 400-500 lb (463 lb) 92.75-96.00 (94.47); 53 head, 500-600 lb (537 lb) 87.31; 24 head, 600-700 lb (639 lb) 84.00; 15 head, 700-800 lb (741 lb) 70.75. Large 1-2, (LL): 27 head, 400-500 lb (456 lb) 90.25.

**FEEDER HEIFERS:** 323 head. Med. and Lge. 1: 28 head, 400-500 lb (465 lb) 86.00; 53 head, 500-600 lb (546 lb) 79-79.75 (79.62); 50 head, 600-700 lb (661 lb) 70.50-75.25 (74.13). Med. and Lge. 2: 17 head, 300-400 lb (363 lb) 87.75; 45 head, 400-500 lb (449 lb) 83.25; 29 head, 500-600 lb (537 lb) 80.50-80.75 (80.73); 35 head, 600-700 lb (657 lb) 72.50-74.75 (74.29).

**What's In A Market Report?**

EPHRATA (Lancaster Co.) — The USDA's Agricultural Marketing Service (AMS) collects and distributes price and sales reports on farm products to provide equal access to both buyers and sellers on current marketing information.

Uniform standards (such as quality grade and yield grade) on which to quote prices have been established for each commodity. The commodity's price basis — per-hundred weight, per-head, per-ton, per-bushel, etc. — should be noted in the report. Most livestock prices are reported on a per-hundred pound weight basis (CWT) with those on a per-head basis adequately noted. The weighted average is computed by dividing the total value of the sales by the total number of units sold.

For example: "Choice 2-3 steers, 1100-1400 lbs, sold 65-68.00" means the market reporter considered those steers of Choice quality, ranging from 1,100 to 1,400 pounds, with the estimated yield of closely trimmed retail cuts graded at 2-3 (on a scale of 1-5 yield grades) and at prices ranging 65 to 68 cents per-pound live weight.

The word "market" can refer to the geographic location where the commodity is traded or the price at which it is traded. Market reports may denote market activity, price trend, supply, demand and undertone. An explanation of these terms follows:

- **MARKET ACTIVITY:** The pace at which sales are made.
  - Active - Supplies readily clearing the market.
  - Moderate - Supplies clearing at a reasonable rate.
  - Slow - Supplies are not clearing the market.
  - Inactive - Sales are intermittent with few buyers or sellers.
- **TREND:** The direction in which prices are moving in relation to trading in the previous reporting period.
  - Higher - Majority of sales are at prices measurably higher.
  - Firm - Prices are higher, but not measurably so.
  - Steady - Prices are unchanged.
  - Weak - Prices are lower, but not measurably so.
  - Lower - Prices for most sales are lower.
- **SUPPLY:** The quantity of the commodity currently available.
  - Heavy - Volume of supply is above average.
  - Moderate - Volume is average.
  - Light - Volume is below average.
- **DEMAND:** The desire to possess a commodity coupled with the willingness and ability to pay.
  - Very Good - Offerings or supplies are rapidly absorbed.
  - Good - Firm confidence on the part of buyers that general market conditions are good. Trading is more active than normal.
  - Moderate - Average buyer interest and trading.
  - Light - Demand is below average.
  - Very Light - Few buyers are interested in trading.
- **UNDERTONE:** Sense of direction in a given market situation.

**Marshall Weekly Feeder Cattle Sale**

Richmond, Va.  
May 15, 2002

Report Supplied By USDA

Weekly Auction at Marshall, May 14 — **FEEDER CATTLE:** 169 head. Prices per cwt. based on in weights.

**STEERS:** 55 head. Med. and Lge. 1: 300-400 lb 93.50; 400-500 lb 85.50-100.00; 500-600 lb 85.75; 600-700 lb 75-81.50. Small 1: 300-400 lb 81.00. Med. and Lge. 2: 400-500 lb 75-78.50; 500-600 lb 73.50-79.50.

**HEIFERS:** 58 head. Med. and Lge. 1: 300-400 lb 85.50-88.00; 400-500 lb 75.50-79.75; 500-600 lb 73.50-81.00; 600-700 lb 69.50. Small 1: 800-900 lb 55.00. Med. and Lge. 2: 300-400 lb 69-78.00; 400-500 lb 71.50-73.00; 600-700 lb 57.50-59.50; 700-800 lb 63.50.

**BULLS:** 56 head. Med. and Lge. 1: 300-400 lb 90-95.00; 400-500 lb 80.50-89.00; 500-600 lb 76-80.00; 600-700 lb 70.50-72.00. Small 1: 700-900 lb 48.00. Med. and Lge. 2: 300-400 lb 87.00; 500-600 lb 72.25-80.00; 700-900 lb 52-54.50.

**Planning a construction project?**



**Plan your financing early and ...plan to talk to Telmark.**

- Preserve credit lines
- Low upfront costs
- Guaranteed "True Tax" or fixed purchase option lease available
- Professional on-site service from your local Telmark representative

Ken Darlington  
PA, NJ, MD, VA, WV  
610-793-0150

Sue Beshore  
PA, NJ, MD, VA, WV  
717-932-1715

Andrew McLean  
Delmarva  
410-827-5052

Elizabeth Anderson  
Delmarva  
410-651-4128

Mike Dixon  
Central PA, West MD  
814-684-5707

Mike Fullam  
Central PA  
570-966-9202

Brenda Pflieger  
Central PA  
570-568-8440

Joe Polite  
Northwest PA  
724-981-1324

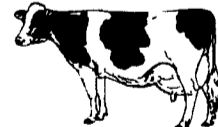
Lisa Sonnen  
Northeast PA, North NJ  
717-866-9217

Doug Snee  
Southwest PA, WV  
724-627-5941

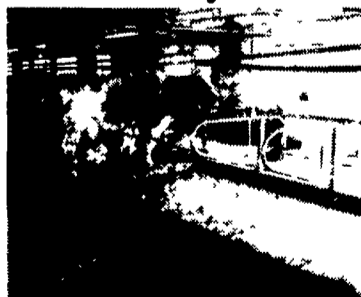
**TELMARK**  
www.telmark.com  
800-451-3322

**For Extreme Cow Comfort Ulti-Mat™ All Rubber Cow Mattress Installation**

Continuous Cow Comfort — **THE ONLY** All Rubber Mattress that recovers to original shape after cow movement.



**Absolutely The Ultimate in Cow Comfort**



- Designed by farmers
- Inert — does not promote fungus or bacterial growth
- 3" nominal thickness
- Water and acid resistant polyurethane binder
- Comfort doesn't change after 5 years in barn and running
- Mattress pads are guaranteed provided the top cover doesn't have holes in it with the original installation

★ Call For References ★  
Installation & Financing Available

Zartman Farms now has  
Water Resistant & Waterproof  
Mattress Covers

**SPECIAL THANKS** To Luzerne Farms  
Ed Quigley Family, Spruce Creek, PA  
Installed Ulti-Mat™ in their 280-Cow Free Stall Barn

**ZARTMAN FARMS**  
820 Hilltop Rd., Ephrata, PA 17522 717-733-1050  
E-mail: zartmanfarms@dejazzd.com

New Ulti-Mat® Dealers:  
Melvin Martin - Martinsburg, PA • 814-793-4199  
Creekside Builders - Weyers Cave, VA • 540-234-0172