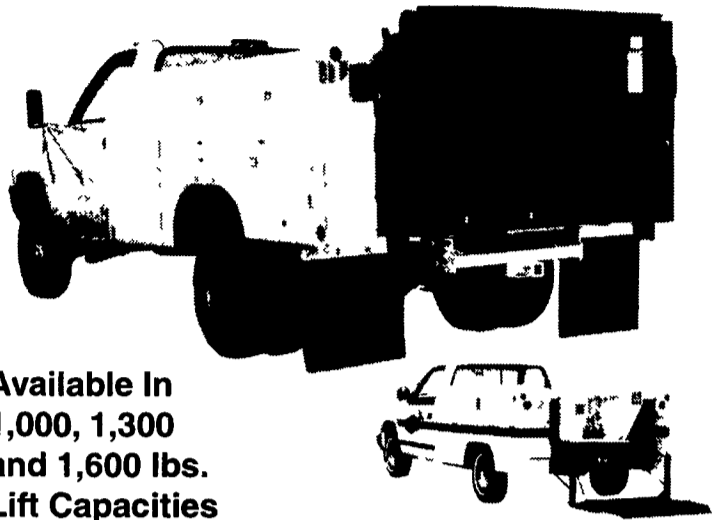


The original
TOMMY GATE
hydraulic lift



Available In
1,000, 1,300
and 1,600 lbs.
Lift Capacities

Sold, Serviced & Installed at

ANNVILLE EQUIPMENT CO.
470 Palmyra Bellgrove Road, Anville, PA 17003
717-867-4631 1-800-233-0520



78 Int., 350 Cummins, Jake,
6 Speed, 5000 Gal. Vac Tank
570/658-2881

FOR SALE:

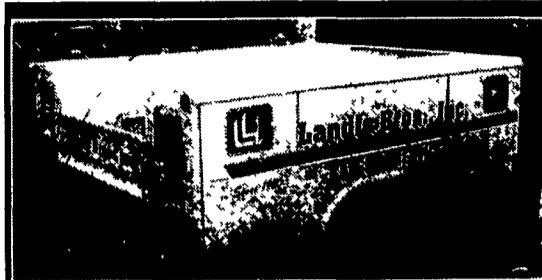
85 EAGER BEAVER TRAILER

8x16 Deck w/4.5' beavertail & ramps.
Frame sandblasted & painted, new tires,
new elec. brakes, new 2" deck.

\$6,500 neg. 610-383-7042



1993 FORD F-350 DUMP TRUCK
7.3 Diesel engine, manual transmission with
overdrive, 4-wheel drive, 11,000 GVW 50,000 miles.
9' Western snow plow. Central hydraulics Henderson
"Chief" cinder spreader Excellent condition.
Strasburg Township, Lancaster County
Call Garry in the Road Dept - 717-687-6233
Offers in writing by 3 p.m. Monday, 6/3/02



9' Redding Box
18" Compartments for
Dual Wheel Chassis
\$475

LANDIS BROS., INC.
717-653-2340

★ **H&L SALES CO.** ★

3830 North George St. Extd., Manchester, PA 17345

866-999-5600 • 717-764-3477 (York)



85 AUTO CAR
eng L10 300, trans 8LL, 20,000 lb front axle,
50,000 lb rear axle, 9 yard Rex Mixer
\$6,500



96 HALL MARK 43' GOOSENECK TRAILER AC, Ford Down Ramp, Side Door, 18,000 GVW - **\$13,900**



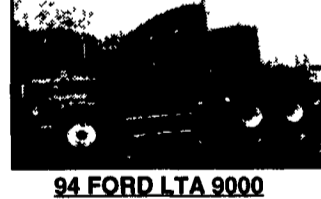
96 FREUHAUF FLAT BED TRAILER
48"x96", Air Ride Susp, Spread Axle
\$6,900



95 FREIGHTLINER
70" condo, 435 cat, jake, 10 speed, PS, A/C,
Air Ride susp, Alum Wheels **\$11,500**



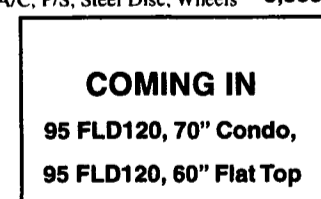
96"X45' DRY FREIGHT VANS
22 5 Tires, Slider w/Logistic Posts



94 FORD LTA 9000
Cat 3406B 350 h p, 9 Speed, 48" Raised
Roof, Sleeper, Air Ride Susp.,
A/C, P/S, Steel Disc, Wheels - **8,500**



97 FREIGHTLINER
FLD 120, 70" Sleeper Mid Roof, 435 HP Cat
Eng, 10 Speed, Air Ride Susps, PS, AC
\$17,900



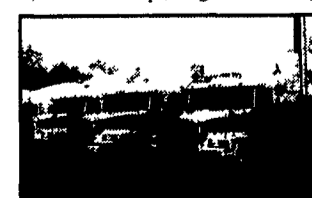
COMING IN
95 FLD120, 70" Condo,
95 FLD120, 60" Flat Top



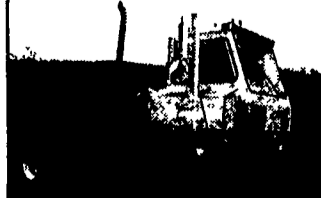
94 FREIGHTLINER FLD112,
Cummins M11 350 HP, Jake Brake, 10
Speed Trans, 50 Raised Roof Sleeper, A/C,
PS, Air Ride Susp, Virgin Tires **\$8,500**



90 IHC 9670, Cummins L10 300, 7
Speed, A/C, P/S, Air Ride Susp, Steel
Disc Wheels **\$4,500**



(3) 93 VOLVO WIA 64 TES TRACTOR
11 2 Det, 350 HP, 9 Speed, Air Ride, 58 Sleeper
\$6,900



86 OTTAWA JOCKEY TRUCK
Det Eng, Allison Auto Trans
\$9,500

KELLER BROS.

(Buffalo Springs) Lebanon, PA

717-949-2000 or 1-800-363-2767

LEBANON COUNTY'S HEAVY DUTY TRUCK HQTRS.

Over 100 Clean Pre-Owned Vehicles
In Stock At All Times!!

2001 FORD 4X4 ESCAPE XLT
6 Cyl., AT, A/C, PW, PL,
Black



2000 FORD E350 CLUB WAGON
7.3 Turbo Diesel, AT, Dual
A/C, 4 Captains Chairs,
7-Pass., 2-Tone



1999 FORD F250 SUPERCAB XLT
4x4, 7.3 Turbo Diesel,
AT, A/C, PW, PL,
Short Bed



1988 CHEV K1500 BLAZER
V8, AT, A/C, Local Trade,
Only 60,000 Orig. Miles



1994 FORD F150 SUPERCAB 4X4
V8, AT, A/C, PW, PL



2000 FORD RANGER XLT
Supercab, 4x4, 4.0, AT,
A/C, Alloy Wheels



1996 FORD F250 SUPERCAB 4X4
XLT, 7.3 Turbo Diesel,
5-Spd., A/C, Short Bed



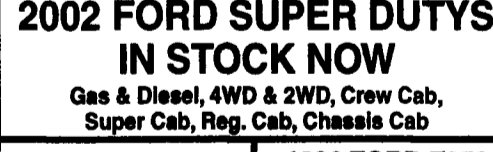
1997 FORD EXPEDITION
XLT, V8, AT, A/C, Leather,
17" Alloy Wheels



1996 FORD F250 CREW CAB XLT
4x4, 7.3 Power
Stroke Diesel,
AT, A/C, PW, PL,
Short Box



2002 FORD SUPER DUTYS
IN STOCK NOW
Gas & Diesel, 4WD & 2WD, Crew Cab,
Super Cab, Reg. Cab, Chassis Cab



1999 FORD F250 SUPER CAB FLATBED DUMP
7.3 Turbo Diesel, 5-Spd.,
A/C, Original Bed Available



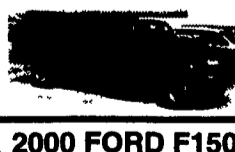
1997 FORD F150 SUPERCAB XLT
5 Speed, A/C, PW, PL,
Short Bed



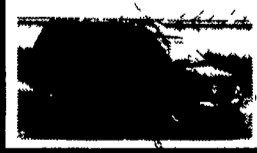
1999 JEEP CHEROKEE LTD
4x4, 4.0, AT,
A/C, Leather,
One Owner



1996 FORD F250 SUPERCAB XLT
7.3 Turbo Diesel, AT,
Long Bed, 4x4



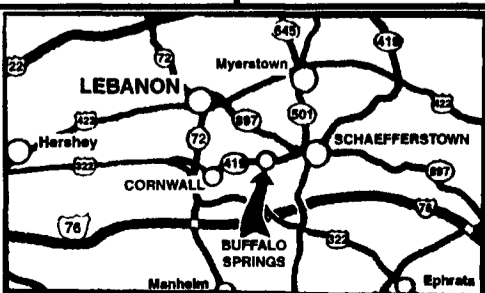
1994 FORD E150 CONVERSION VAN
5.8 V8, Full Power, HI-
Top, TV, VCR, 1-Owner



2000 FORD F150 SUPERCAB 4X4
XLT, 5.4 V8, AT, AC,
2 Tone, Like New



1997 FORD F150 XLT 4X4 4.6, AT, A/C, PW, PL SPECIAL \$13,995



Blue Oval Certified



FAMILY OWNED AND OPERATED FOR OVER 80 YEARS