

New Company Name

WHITEFORD, Md. — Clements Supply Company, Inc., a longtime community partner, John Deere equipment dealer, and petroleum distributor in Clayton, Del., has a new name.

Founded in 1887, Clements was purchased in 1983 by Mr. Charles "Skip" Rebar. In December 2001, Rebar, while retaining the petroleum distributorship, sold his interest in the equipment dealership to his sons Gregg and Daron Rebar.

The resulting companies are Clements Fuels, owned and operated by Rebar, and Deer Creek Equipment, owned and operated by Gregg and Daron Rebar.

Deer Creek Equipment of Clayton joins existing locations in Whiteford, Md., and Oxford, Pa., in the mission of supplying the highest quality equipment and service. The signs and logo may change, but the same great staff will continue to deliver the very best to customers.

Agco Offers Free Fieldstar Field Report

ATLANTA, Ga. — Accurate soil testing; variable-rate application of lime, fertilizers and chemicals; plus detailed application documentation is paying off for the customers of Miles Farm Service in Southern Indiana. How they're doing it and the results they're getting are detailed in a new free Fieldstar® Field Report available from Agco Corporation.

Yield monitoring and GPS (Global Positioning System) mapping, part of a Fieldstar precision agriculture system, are revealing to today's leading producers exactly where they have problem areas in their field. Richard Baylis and Paul Rose, Opti-Crop consultants for Miles Farm Service in Hatfield, Ind., are using GPS-based variable-rate technology (VRT) to turn that information into increased profits for their customers farming the rich farmland along the Ohio River.

"We're seeing some pretty good payoffs," reports Paul Rose. "For example, on lime application, one of our customer's savings in material costs alone was \$13.17 an acre." Today, with Fieldstar, there's no need to correct pH with a blanket application.

Advanced Concrete Systems Receives Awards

LANCASTER (Lancaster Co.) — Larry Yarger, president of Advanced Concrete in Middleburg, and staff recently attended the Superior Walls of America 2002 awards dinner in Lancaster.

Advanced Concrete was presented with first place marketing excellence, first place website design, second place highest manufacturing efficiency, and second place highest sales award. Dawn Brown was

"VRT with lime has proven itself as a money maker," Rose continues. "And we're studying variable rates in other areas. The idea is to save input costs and increase yields. Sometimes we can do one, sometimes both."

The Field Report details their approach, along with an actual soil analysis map and lime application plan developed by Baylis and Rose using the Fieldstar Office Package software.

The Field Report shows chemical application plans and actual "as-applied" maps, and explains how Miles Farm Service develops and implements their application plans.

Rose explains in the Field Report how the Fieldstar precision agricultural system is also helping them become proactive in the environmental and other legislated aspects of farming.

Requests for a copy of this free Fieldstar Field Report should be directed to: Miles Farm Service Field Report, Agco Marketing Services Group, P.O. Box 969, Hesston, KS 67062-0969. Phone: (316) 327-6225. Fax: (316) 327-6327. E-mail: marketing.services@agcocorp.com.

presented with Top Salesperson of the Year and Tom Dissinger was presented with a sales performance award.

Advanced Concrete is a franchisee of Superior Walls of America and provides home builders with insulated, pre-cast concrete foundation walls in Central and Northeast Pennsylvania. They have been in business since 1986 and have 84 employees.

Land Pride Introduces New AT26 Series Grooming Mowers

SALINA, Kan. — Land Pride's new AT26 Series air tunnel grooming mowers continue an outstanding tradition of mowing excellence. Available in three key widths of 60 inch, 72 inch and 84 inch, these air tunnel mowers now feature the vacuum formed ABS belt guards and discharge chutes and the one piece gauge wheel arms. The one piece tubing for the gauge

wheel arms increases strength and adds to the overall appearance.

The finest in grooming results are made possible by the air tunnel design. The aggressive high speed cutting blades cut the grass cleanly and the air tunnel system discharges it efficiently, even in many moist, rugged and tall grass conditions.

Glencoe Introduces New High-Capacity Tillage Tools

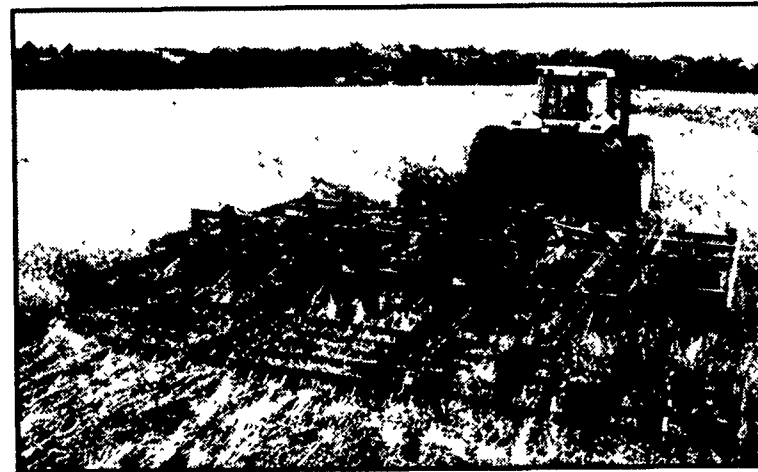
ATLANTA, Ga. — Glencoe has introduced two new, high-capacity tillage tools for optimum residue incorporation and one-pass seedbed preparation.

The FC3800 Field Cultivator features six ranks of shanks on a 153-inch (3.9-meter) front-to-rear frame for exception shank-to-shank clearance and residue handling. The SF4800 Soil Finisher features a disc gang ahead of four ranks of shanks to chop and incorporate residue while preparing seedbeds.

Both models come with C-Shanks in your choice of C-flex or spring clamps. The FC3800 is available with standard eight-inch (200-millimeter) low-crown sweeps or a wide choice of optional sweeps and spikes. The SF4800 comes with 10-inch (255-millimeter) sweeps. Rear hitches are available on both models for pulling tanks and other attachments.

The FC3800 is available in three- and five-section models that fold quickly for narrow transport. Three-section models range from 19½- to 36½-foot (5.9- to 11.1-meter) working depths. Five-section, hydraulic-folding, models are available in working widths from 33½ to 54½ feet (10.2 to 16.6 meters). Tractor recommendations are 3½ to 6 drawbar-horsepower (dbhp) per foot (11 to 20 dbhp per meter), depending on soil conditions.

The SF4800 is available in



New heavy-duty Glencoe® Secondary Tillage tools can handle heavy residue while preparing great seedbeds, all in one pass.



rigid-frame models with 11- and 14-foot (3.4- and 4.3-meter) working depths, and wing models with 16½ to 35½ foot

(5.1- to 10.8-meter) working widths. Wings are hydraulic-folding and can flex 7½ degrees up or down in the field.

Massey Ferguson Designs And Builds New Orchard Cab Tractors

DULUTH, Ga. — New Massey Ferguson® MF 4300 Series Orchard Cab tractors feature a state-of-the-art cab that meets or exceeds the requirements of ASAE Standard S525 for enclosed cabs for pesticide application incorporating respiratory protection; provides maximum operator comfort, convenience and visibility; and minimizes damage to crops and tree limbs.

"Designing and building the cab based on extended testing and input from orchard operators has also resulted in a unique tapered design, the lowest roof height in the industry, and a redesigned cab interior for greater operator comfort and convenience," said James Hill, Massey Ferguson sales engineer.

"We spent two years designing and testing the 4300 Series Orchard Cab tractors, and during this time we had over 120 orchard operators use the tractor and provide feedback," said Tim Wagner, Massey Ferguson general marketing manager. "The information we received was invaluable in achieving the final cab and tractor design."

"The cab is designed and built by Massey Ferguson specifically for orchard applications — we wanted to improve on the after-market cabs used by other tractor manufacturers," added Wagner. "This gives us the advantage of being able to fit the cab precisely to the chassis for maximum sealing and provide the best possible protection to the operator."

The 730 requires a tractor of only 30 PTO hp and one double-acting remote valve to produce bales of up to 500 pounds (250 kilograms). The 740 gets by with only 45 PTO hp to roll bales of up to 1,000 pounds (500 kilo-



New Massey Ferguson 4300 Series Orchard Cab tractors, 85, 9, and 99 PTO hp models, two- and four-wheel drive, feature a new MF designed and built cab.

grams). Both balers feature standard dual twine arms for tying at nearly twice the speed of the competitor's single-arm balers. Electric twine tie is optional on the 730 and standard on the 740.

Special attention has been paid to ease of operation and durability. For example, wide-opening doors on both sides of the balers provide easy access to all drives. And with only five drive chains and one drive belt, efficiency and reliability are exceptional.

The tapered cab design is reduced in width at the top to 35.8 inches, and the height of the steel roof is only 90.5 inches (with 18.4-26 rear tires) to reduce damage to crops and

overhead tree limbs. For added crop protection rear view mirrors are located inside the cab, work lights are removed from the roof where they can snag fruit or limbs and repositioned on the fenders, and the exhaust points down — not up or horizontally.

There are three MF 4300 Cab Orchard Tractor models — the MF 4355 (85 PTO hp), MF 4360 (90 PTO hp), and MF 4370 (99 PTO hp). All three are available in two- and four-wheel drive configurations. The MF 4355 features a steeply-slanted low profile hood design, and the MF 4360 and MF 4370 have a gently-sloping standard hood profile.

Buck Rejoins Blue Seal Bainbridge Dairy Sales

LONDONDERRY, N.H. — Larry E. Buck of Unadilla, New York recently rejoined Blue Seal as a member of the dairy sales staff based at Blue Seal's Bainbridge, New York mill.

Buck joined Blue Seal in 1975 as a dairy sales representative. In the ensuing years he served as

area manager for Bainbridge, N.Y. and area manager for Arcade, N.Y. He also spent five years as a district manager for Specialty Feeds. From 1990-2001 he served as a dairy specialist based in Bainbridge.