

**9:00
A.M.
SHARP!**

**PUBLIC AUCTION
SATURDAY, MAY 18, 2002**

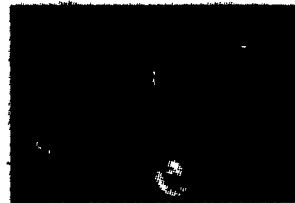
**9:00
A.M.
SHARP!**

To be held at Kingsdale Fire Company grounds on Rt. 194 between Taneytown, MD and Littlestown, PA, 1789 Frederick Pike, Littlestown, PA
Attention dealers, farmers, collectors and all. Do not miss this sale, most items have little or no reserve, all no sales are announced and in the past 3 sales we have sold 90% or more, very few no sales!!!! Come enjoy the day with us, expect more than advertised!!!

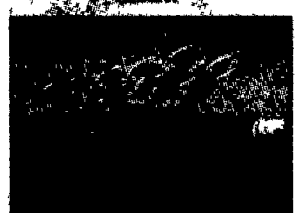
In our November sale we had over 100 tractors and 250 pieces of farm equipment. This time expecting 100+ tractors (compacts, antiques & late models). Lots of parts and



collectibles plus lots of great



farm & construction equip-



TRACTORS: CASE: IH 7130 Nice Western Tractor, **JOHN DEERE:** 3020 G S.C., 3055 C.A.H. 93" Model, w/Q.A. Ldr, 1010 RU1971 4020 W.F. w/Cab 1 Owner High Rise Manifold Crooked Stick, 4020 Side Console, W.F., 4020 Power Shift, W.F., 4320 Side Console Cab, Dual Hyd. Nice!!, 4430 CAH, Quad, Nice, 1999 6210 w/1900 Hrs., 3120, 2630, 2155 (1600 Hrs.), 1020 Gas, **IH:** 1466, C.A.H, Duals Wghts., Nice!!, 585 w/2200 Q.A. Ldr., 2200 Hrs., 1 Owner, 350D, 756, 130 w/Belly Mower, 100 w/Belly Mower, **AC:** 6060 w/Ldr., **FORD:** 335 w/Ldr. & Rear Forklift, 2000, 2600, 3600 D, L.P.T.O, P.S., 3930 (650 Hrs.), 6600, **MF:** 1998 4270 4x4 w/1000 Hrs., **FARMALL:** 560D, 350U-Gas, M, **WHITE:** 2-70; **LANDINI** 8550 4x4 CAH 73HP, **HINES:** Cultivating Tractor w/Deck & Blade, **KUBOTA:** M-8950 4x4 C.A.H.

ANTIQUÉ/COLLECTOR TRACTORS: JOHN DEERE: Bo Lindeman Crawler Completely Rebuilt, 4020 Power Shift High-Crop, Restored "Both To Be Sold Absolute", JD 330 S Ser#330916, Older Restoration, 520 Ser# 5, 5th One Built, 1010 Turf Special, "Low Production", 420 W, Slant Steer, Power Steering, Foot Throttle, Unique, 620 w/3Pt., 730D, 620NF Original, 50 L.P., JD B, 1948 G w/WF, MT Completely Restored w/Plow, 70 Gas, B w/Bethen Road Gear, H "Original," D "Parts" **IH:** I-6 Professional Restoration, IH Super AV, **FARMALL:** Super WD-9, I-6 (Restored), 130 w/F.H. & Cult, F-30 Full Factory Rounds, 2-Cubs 1 w/Deck & 1 w/Cult., **MINNEAPOLIS MOLINE:** Super U-302 W.F., **MH:** Pony, 22 w/3 Pt. & Loader; **MF:** 65 LP Gas; Standard Twin Walking Tractor; **AC:** CA WF, 3Pt., LPTO

COMPACTS & L&G: KUBOTA: B-6100, 7200 4x4 w/Ldr., B-7100 4x4 w/Loader, B-7200, F-2400D 4x4 Front Cut Mower, L2550 4x4 w/Ldr., **JOHN DEERE:** 330D, 455 D, 218, 140 H-3, 317, 345, 4600 4x4 w/Ldr., 4100 4x4 w/Ldr., STX 38, 1050 TLB, 870 4x4 w/Ldr., 955 4x4 w/Ldr., 112, Commercial Walk-Behind; **SIMPLICITY:** 2-Sun Stars, **BOLENS:** G-198 4x4, Isecki 174 4x4 w/Like New Bush Hog Loader, **IH:** Cub 185 w/Blade, Cub 154 w/Mower; **GRAVELY:** 16G, **TROYBILT:** Horse Tiller, **TORO:** 72" Front-Cut Diesel; **FORD-NH:** 1220 4x4 w/Ldr., 1920 4x4 w/Ldr., **CUB CADET:** 7275 4x4 w/Ldr., **MITSUBISHI:** Beaver 4x4, MT 372 4x4 w/Ldr., Grasshopper 48", **FORD:** 1300 4x4

HAY EQUIPMENT: JOHN DEERE: 335 Round Baler "Like New", 510 Round Baler, 1209 Haybine, 640 Rake, "2" 714 Silage Wagons w/1275 Tandem Gears, 1600A MO-CO, NH 990 Haybine, 474 Haybine, 477 Haybine, 411 Discbine (Nice), 55 Rake, S68 Baler, 326 Baler, 315 Baler, 451 Sickle, 256 w/Dolly; **IH:** 430 Baler, **CASE-IH:** 1190-9 Haybine; 8520 Sq Baler (Very Nice), **FORD-NH:** 634 Round Baler "Like New", 451 Fiat Less Than 20 Acres, "Like New", N.I.: 5209 Discbine "Red" Nice, Vermeer Twin Fold Rake, S&W Disc Mower "Like New" Hesston 3pt., Tedder Rake, Flat Wagon Danco Kick Wagon, JF-CR320 3 Pt. Rake/Tedder, Pequea Tedder, Grimm Tedder, MF Rake, D/A Discbine, Hesston 530 Rd Baler (Nice), Rhino 5' Finish Mower, Kidd Tub Grinder (Nice), Elevator, JD 175 Loader (Nice), M&W 4x4 Baler "Silage Special" Net & Twine, Farmland 3 Pt. Bale Wrapper

EQUIPMENT: Woods 2126, Heavy Duty "Like New", "Unused", KD Loader for JD Tractors, Pittsburg 10' Trans Disc, Deutz-Allis 385 4x No-Till

Planter, JD 8' & 14" Lime Drill, "New" KK 6' Finish Mower, Danuser PHD, MF, 2x Planter, JD, 1x Planer, MF 2x Plow, IH 310 1x Plow, JD 4200 4x Roll Over, IH 5 Shank V-Ripper, A.R.S w/Spring Coulters, Several New Blades, Phd, Scrapers, Poles, Etc. IH 2 Pt Disc, AC Snap Coupler Planter, NH 36 Crop Chopper, Gravity Wagon, Mixer Wagon, Land Pride York Rake & Box Blade, Howard 7 Shank V-Ripper, IH 110 Wagon, 2x Planter & Sickle for AC-G, Spreaders, Woods 214 Batwing Mower, Woods 10 Ft. Mower, Brillion 12 Ft. Mower, JD 550 Sprayer, JD 1620 Disc, IH 37 Disc, 3 Pt. for C&B Farmall, 3 Pt. Sprayer (Like New), 3 Kinze Planter Units, 7 JD Seed Boxes, JD #1450 6x On Land Plow, Farquar Thrasher (Wooden), JD 9x Bean Planter, Oliver Drill, John Blue 1000 Gal. Sprayer, NI 213 Spreader (Nice), JD 148 Loader, Woods 121, IH 710 5x Reset Plow, 3 Farmco Feeders on Wheels, NH 305 Spreader (Nice!), Bush Hog 7' Mower, NI 323 Picker; ARPS & IH 3 Pt. Backhoe Attach., Woods RM 990 Mower, New Int 8 & 10 Ft. Mowers, Woods 208, NH 514 Spreader, NH 353 Mixer "Unused", AC G-Disk and Mold Plows, IH 200 Spreader, MF 3 PT. Sickle, Fast Hitch PHD, 9' Chisel & Disc Plow, JD Vegetable Planter, JD 7000 6 Row Planter

COMBINES & HEADS: JD 4400 Diesel w/Grain Head, 2200 Hrs, JD 3 RN, Chopper Head, AC A 330 Black 3 RN, JD 444 Head

CONSTRUCTION: 1997 Terramite, 1000 Hrs, Case 1840 & 1845 C Skid Steers, Kubota KH-35 Mini-Exc, Mustang 1700 Skidsteer, JD 310 TLB, JD 1010 Dozer, **JD 6775 W/500 Hrs.**, New Rhino 5 Ft. Skid Steer Mower, Komatsu 4x4 Rough Terrain Fork Lift, Yale Fork Lift

TRUCKS: 1997 F700 22' Rollback-Diesel, 1988 Ford F-150, 1987 Ford F-150

TRAILERS: 1999 Pro-Trak 20,000# Trailer (Nice!), "New" 6x16 Trailer, 26' Enclosed Racing Trailer, Custom Nice!!, 40' Box Trailer, 10-15 Trailers Ranging from 6-20'

PARTS: JD Roll-A-Matic, IH, Ford, JD Suitcase Wghts, AC, B Side Wghts, JD Rear Wghts, 3Pt. for IH B or C, JD Clam Shell & Flat Top Fenders, IH Hoods, Grills & Fenders, IH SMTA Wide Front

MISC: 2 Golf Carts, Lumber, Myers 8 Ft. Snow Plow; Arksfield Livestock Scale, 3 Pt. PTO Gen

IF YOU ARE UNABLE TO ATTEND, PLEASE FEEL FREE TO CALL AND LEAVE ABSENTEE BIDS ON ITEMS!

NOTE: DON'T BE LATE!

STARTING ON EQUIPMENT & MISC. AT 9 AM SHARP WITH 3 AUCTIONEERS!!!!

CALL NOW TO CONSIGN!

Great commission rates

**Auction Managers: Greg McGrew
Office 717-428-0922 Cell 410-299-3326
e-mail: MCGREWEQUIPMENT@msn.com
Lloyd Divers Home 717-359-0076
e-mail: diversityfarm@prodigy.net
Auctioneers: Dennis Wolgemuth (#2357)
John Hess Mike Quarrick**

**Not responsible for accidents or no-shows.
All items subject to prior sale.
Auction Managers reserve
right to refuse any consignments. (NO JUNK!)
Do not miss this sale. Make plans now to attend.**

