

North Atlantic Eggs

Atlanta, Georgia
Report Supplied by USDA
May 9, 2002

Prices remained unchanged in all locations. The market tone continued generally steady. Demand ranged light to moderate. Supplies were adequate to available for trade requirements. Breaking stock offerings were sufficient for the moderate demand. Light type fowl were at least adequate to fully adequate for slaughter schedules.

PHILADELPHIA: PRICES TO RETAILERS, SALES TO VOLUME BUYERS, USDA GRADE A AND GRADE A, WHITE EGGS IN CARTONS, DELIVERED STORE DOOR, CENTS PER DOZEN. RANGE: EXTRA LARGE .48-.53, LARGE .47-.51, MEDIUM .43-.47

BOSTON: PRICES TO RETAILERS, SALES TO VOLUME BUYERS, USDA GRADE A AND GRADE A, BROWN EGGS IN CARTONS, DELIVERED STORE DOOR, CENTS PER DOZEN. RANGE: EXTRA LARGE .87-.89, LARGE .76-.78, MEDIUM .66-.68

NEW ENGLAND: PRICES PAID TO PRODUCERS, CASES EXCHANGED, GRADE YIELD BASIS, BROWN EGGS LOOSE, AT FARM, CENTS PER DOZEN. RANGE: JUMBO 1.17-1.20, EXTRA LARGE .68-.71, LARGE .57-.60, MEDIUM .47-.50, SMALL .25-.28

National Canner Fowl Market

Atlanta, Ga.
May 3, 2002

Report Supplied By USDA

NATIONAL CANNER FOWL MARKET: Majority of prices were unchanged to slightly lower on both lights and heavies when compared to a week earlier. Offerings were adequate to fully adequate. Demand ranged light to moderate. The undertone was about steady.

Cents per pound, current negotiations with out freight cost: LIGHT CANNER HENS: Line run without necks: 21.5-25.5, majority 22.25-23.25. HEAVY CANNER HENS: Without necks: 31-38, majority 31-31.5.

Cents per pound, current negotiations freight cost included: LIGHT CANNER HENS: Line run without necks 23-27.5, majority 23.5-24.25. HEAVY CANNER HENS: Without necks: 31.5-38.00, majority 33-33.5.

Northeast Broiler Fryer Parts Part I

ATLANTA, GA.
May 8, 2002

Report Supplied By USDA

Trucklot buying activity was about moderate during midweek trading.

Offerings of bone-in breasts were slightly more available, but remained closely cleared. Boneless-skinless breasts were sufficient. Dark meat cuts were at least adequate. Wings and tenderloins were readily available.

Movement through retail and distributive channels was fair to moderate, and was best for the occasional feature. The market tone was steady on breast items, barely steady to instances weak on wings and tenderloins, and no better than steady on the balance.

ICE PACKED BROILER/FRYER PARTS, DELIVERED TO FIRST RECEIVERS IN POOL TRUCKLOT AND TRUCKLOT QUANTITIES, CENTS PER POUND. ITEM CURRENT NEGOTIATED TRADING BREAST - B/S 145-150 TENDERLOINS 110-115 BREAST - WITH RIBS 81-82 BREAST - LINE RUN 81 LEGS 32-33 LEG QUARTERS (BULK) 19-20 DRUMSTICKS 32-33 THIGHS 25-26 B/S THIGHS 76-77 WINGS (WHOLE) 54-55 BACKS AND NECKS (STRIPPED) 10-12 LIVERS (5 POUND TUBS) 20-25 GIZZARDS (HEARTS) 40-45

National Turkey Market At A Glance

Des Moines, Iowa
May 7, 2002

Report Supplied By USDA

DOMESTIC MARKET HIGHLIGHTS: The market tone on 8-16 lb hens and 16-24 lb toms was steady to firm, mostly fully steady. Demand was light to moderate. No sales reported. Offerings held with confidence, as some ask for increased price levels. Meats and parts trading slow for the light to adequate offerings. Demand light and selective.

EXPORT MARKET HIGHLIGHTS: Trading limited. Demand was mixed with the most interest noted on tom drums. Supplies were unevenly held as some items finding increased interest.

Northeast Broiler Fryer Parts Part II

ATLANTA, GA.
May 8, 2002

Report Supplied By USDA

ICE PACKED BROILER/FRYER PARTS, DELIVERED TO FIRST RECEIVERS IN POOL TRUCKLOT AND TRUCKLOT QUANTITIES, CENTS PER POUND CURRENT NEGOTIATED WTD VOLUME ITEM TRADING AVG /LBS BREAST - B/S 145-150 144.06 415,490 TENDERLOINS 110-115 114.35 94,520 BREAST - WITH RIBS 81-82 86.31 176,680 BREAST - LINE RUN 81 84.48 152,400 LEGS 32-33 36.07 147,880 LEG QUARTERS (BULK) 19-20 20.45 396,011 DRUMSTICKS 32-33 33.77 104,870 THIGHS 25-26 29.49 88,060 B/S THIGHS 76-77 71.52 103,320 WINGS (WHOLE) 54-55 58.83 309,600 BACKS AND NECKS (STRIPPED) 10-12 11.94 39,760 LIVERS (5 POUND TUBS) 20-25 21.21 13,040 GIZZARDS (HEARTS) 40-45 44.25 25,200

Delmarva Broiler/Fryer

ATLANTA, GA.
May 8, 2002

Report Supplied By USDA

Movement of ready-to-cook whole birds was moderate to good and was sufficient in keeping the bulk of seller offerings in good balance, particularly on the 3 pound and smaller sizes. Live supplies were mostly moderate, weights were mostly desirable to heavy. Processor schedules were moderate to moderately heavy. Less than trucklot asking prices were unchanged at 51 to 65 cents. Trade sentiment was fully steady. Instances firm. In the parts complex, all cuts were at least adequate.

ESTIMATED SLAUGHTER OF BROILER/FRYERS IN DELMARVA (000)

ESTIMATED ACTUAL AVG. WEIGHT ACTUAL AVG. WEIGHT 05/08 05/06 05/06 05/01 04/29

2,369 2,347 5.27 2,335 5.21. BRANDED U.S. GRADE A RANGE 48-68 WEIGHTED AVERAGE 53.46 NO. OF BOXES 8,720

8 of 8 plants reporting.

Eastern Region Frozen Eggs

ATLANTA, GA.
May 3, 2001

Report Supplied By USDA

Mostly prices were unchanged when compared to previous week's trading. The market tone was steady to fully steady on yolks, about steady to steady on whole, and steady on whites. Demand was moderate. Supplies were adequate for trade needs. Liquid and frozen eggs (ingredients included) processed under federal inspection in the Eastern region for the week ending April 27, 2002 were unchanged from the previous week, but 4% lower than a year ago.

WHOLESALE SELLING PRICES (CENTS PER POUND IN 30 LB CONTAINERS):

TRUCKLOTS: WHOLE 37-45, mostly 41-42; BLENDS (I) TFEWR; WHITES 22-32, mostly 22-25; SUGARED YOLKS (min. 43% solids) 71-74, mostly 71-73; SALTED YOLKS (min. 43% solids) 66-70, mostly 66-69.

LESS THAN TRUCKLOT (min. 25 cont.): WHOLE 49-53; BLENDS 63-85; WHITES 27-45; SUGARED YOLKS (min. 43% solids) 77-82; SALTED YOLKS (min. 43% solids) 73-78.

(I) - WHOLE PLUS YOLK PLUS SWEETENER, GENERALLY 28-32% EGG SOLIDS.

Eastern Region Miscellaneous Poultry

Atlanta, GA.
May 3, 2002

Report Supplied By USDA

EASTERN REGION MISCELLANEOUS POULTRY FOR CURRENT DELIVERY for the week of Apr. 29.

DUCKLINGS: Prices negotiated by first receivers. US Grade A, 4-5 pounds, delivered in trucklot and pool trucklot quantities: LONG ISLAND—Frozen 137; Fresh 143. MIDWEST—Frozen 122-126; Fresh— 123-127.

ROASTERS: Prices negotiated by first receivers, US Grade A and Plant Grade, 3 pounds and up, delivered: ICE PACKED (12 per box) 55-62 mostly 58-62. VACUUM PACKED (6-9 per box) 62-85 mostly 65-73.

SQUABS: New York Wholesale Prices, Frozen, Plant Grade, dollars per dozen, 1 to 10 boxes: 12 oz. 60.48-69.66; 14 oz. 66.96-76.14; 16 oz. 73.44-83.43.

The eastern region includes: CT, DE, FL, GA, MA, MD, ME, NC, NH, NJ, NY, PA.

New York Broilers/Fryers

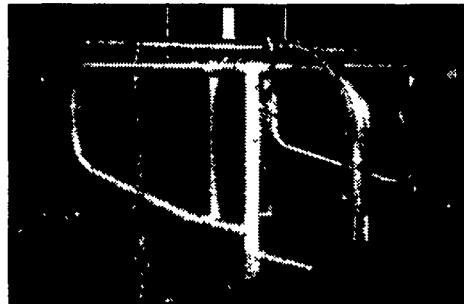
ATLANTA, GA.
May 7, 2002

Report Supplied By USDA

Trucklot buying activity on ready-to-cook whole broiler/fryers was mostly fair to moderate. Offerings of all sizes were clearing well, although, the lighter birds were usually noted in the better balance. Movement through retail and distributive channels was moderate with seasonal business providing the best draw. The market tone was steady to fully steady.



Galvanized Tie Stalls



Save Your Curb With Our Stainless Steel Curb Model



- Stainless Steel Corrosion Protection
- Hot-dipped Galvanized Accessories
- Water Bowls and 1 1/2" Galvanized Water Line In Stock

*Gatorshield is a registered trademark of Allied Tube & Conduit Co



255 Holtzman Road
Reinholds PA 17569

717-484-2233

Call for Free Color Brochure!

Fabricators of Galvanized Barn Equipment

Can You Afford To Waste Hay? Try the BALE BOSS Hay Saver STEIN-WAY Barn Equipment



Quality Barn Equipment at Economical Prices

- ❖ Free Stalls
- ❖ Sand Traps™
- ❖ Self-locks
- ❖ Waterers
- ❖ Gates
- ❖ Bale Boss Hay Savers

Call: Joe Speicher

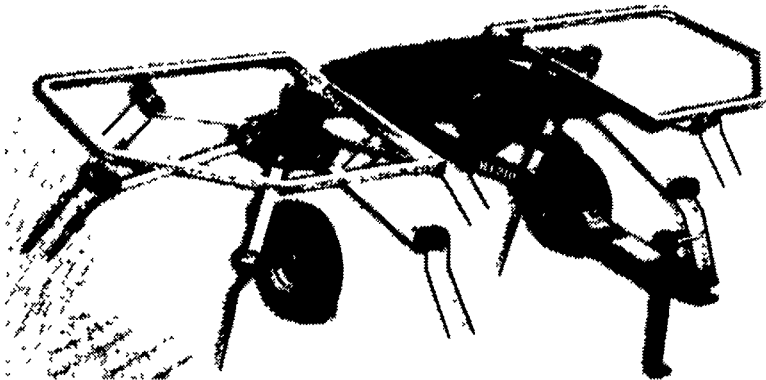
175 North Imler Valley Rd
Imler, PA 16655

(814) 276-3304

1-888-605-2422



Ask About Hay Tedder Sizes 10' to 17' Available



529 Falling Spring Road, Chambersburg, PA 17201-0219

Toll Free 888-464-6379

Phone 717-263-9111

IMPROVE YOUR FARM CASH-FLOW With Guaranteed Monthly Payments

2200 Head Wean-to-Finish & 1000-2000 Head Feeder Pig-to-Finish Facilities Needed

Contracts available for new or existing buildings for various Pennsylvania swine projects



- Single-Source Pigs
- Competitive Contract Payments
- Modest Labor Requirements
- Positive Cash-Flow & Depreciation Write-Offs
- Superior Feeding & Management Practices
- Quality Swine Genetics



419 W. High St.
Elizabethtown, PA 17022-2189

Toll-Free 800.468.5524

White Oaks Mills Inc. & Franklin Family Farms...

Committed to Pennsylvania's Swine Industry!

PENNFIELD DAIRY FEEDS

#75021 - 16% FLAKE
\$165.70

#75023 - 20% FLAKE
\$179.72

#70100 - 35% PELLET
\$252.87

#75062 - 38% PELLET
\$258.24

Prices are week of 05/13/02 and include 4 ton volume, mid week/early order, 4% cash discount paid 10 days. Prices are delivered to the farm within 75 miles from Mt. Joy, PA

PENNFIELD GRAIN BANK

Prices may vary by feed mill location. Prices Week Of 05/13/02

Corn \$2.44 Bu
Soybeans \$4.72 Bu
Barley \$2.37 Bu

- Use Grain "Same As Cash"
- Prices Updated Weekly
- Grain Back-Hauling
- No Storage Charges When Applied To Feed Purchases
- Yearly Statement of Grain Transactions Available

CUSTOMER SERVICE DEPT. OPEN 24 HOURS

1-800-995-0333 pennfield feeds