

35 TRUCKS AND TRAILERS

7511 Allentown Blvd.
Harrisburg, PA 17112

**75 TRUCKS
IN STOCK**

**AFFORDABLE
CARS AND TRUCKS, INC.**

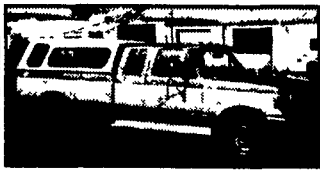
"You Gotta Believe!!"

New Exit #72A, Rt. 81 N; Rt. 22 East of Harrisburg; 3 Miles North of Hershey Park

717-652-1925

FAX 717-652-4888

www.autotrader.com/view/
affordable car and truck



**89 FORD F250
XLT 4X4 H D**
Ext Longbed, 7 3
International Turbo Dsl,
5 Sp, AC, PW, PDL, New
Clutch & Flywheel, Leer
Cap, Beautiful Truck
\$7,995

**94 DODGE RAM
2500** 4x4, Laramie
SLT, Cummins Diesel, 5
Spd, AC, PW, PDL, 2
Tone & Many Extras,
Only 102K, Looks &
Drives Like New!
\$14,500



**96 DODGE RAM 2500 4X4
SLT LARAMIE**
Ext Longbed, Cummins Turbo Dsl, AT, AC,
PW, PDL, Stereo 2 Tone Black/Red,
100,000 Mi, Real Clean Truck! **\$14,500**



93 GMC 1500 SLE
4x4 Ext Cab Shortbed, 350 V8 AT, AC,
PW, PDL, Stereo, Leer Cap, Real Sharp
Truck In Must See Condition,
1-Owner, 100,000 Mi
\$8,995



99 FORD F350 4X4 XLT LARIAT
Quad Cab Longbed, 7 3 Powerstroke Dsl,
AT, AC, PW, PDL, CD, Cassette Stereo, Cap
Matched With Beautiful Colors, 100,000
Miles, Flawless With Leather Interior
\$20,995



**98 DODGE 2500 RAM SLT
LARAMIE 4X4**
8800 GVW, 360 V8, Rare 5-Speed, AC,
PW, PDL, Stereo, Ext Cab, Longbed,
Only 80,000 Mi & Nice **\$14,995**



**96 CHEV 2500 4X4 SLT
SILVERADO SUBURBAN**
6 5 Turbo Diesel, 3rd Seat, Barn Doors,
Dual AC & Heat, 107K, Like New,
1-Owner **\$15,500**



95 FORD F250 H.D.
4x4, 351 V8, 5 Speed, 8,600 GVW, All
100% Factory Orig Finish, All 100%
Highway, 160K, But It's Like New & Full
1 Yr 100% Warranty Included
\$6,995



96 FORD F350 XLT 4x4
7 3 Powerstroke Dsl, AT, AC, PW, PDL,
Stereo, 2 Tone Blue, Real Nice Vehicle,
150K **\$14,000**



89 FORD F-250 XLT
7 3 International Dsl, Ext Cab Longbed,
Complete Tow Package, 5 Sp, AC,
All Options & Real Nice Shape,
100,000 Mi, Ready to Tow **\$3,495**



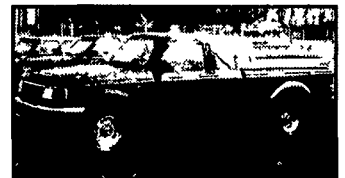
96 FORD F350 XLT 4X4
7 3 Powerstroke Dsl, AT, AC, PW,
PDL, Stereo, All Black Mint Condition,
1-Owner, 100,000 Mi
\$14,950



98 FORD CARGO E-350 VAN
6 Cyl, Auto, Air, Real Super Clean Van,
100,000 Miles
\$6,995



97 FORD F250 XLT 4x4
Ext Cab, Longbed, 7 3 Powerstroke
Dsl, AT, A/C, PW, PDL, Stereo, Tow
Pkg & More, Like New 100,000 Mi.
\$16,500



97 FORD RANGER XLT 4x4
Ext Cab, All Black, V6, AT, AC
& All Options, This Is A Real
Nice Truck, 90,000 Mi
\$8,995



98 DODGE 2500 4X4
Laramie SLT, Cummins Turbo Dsl,
5 Speed, AC, PW, PDL, Stereo,
Only 60,000 Miles,
Showroom Condition!
\$20,995



97 DODGE RAM 2500 4x4 SLT
Laramie, Cummins Turbo Diesel,
Loaded Up PW, PDL, Cruise & Tilt, 2
Tone Paint & Alloys, Only 90,000 Mi,
I Have (1) 5 Speed or (1) Automatic
\$15,995 Each



97 CHEV. 2500 4X4 H.D.
Silverado, 8600 GVW, Vortec 350, AT,
AC, PW, PDL, Stereo & More, 103K
\$11,995



97 FORD F350 XLT
1-Ton 4x4, H D, Powerstroke Diesel
5 Spd, AC PW, PDL, Jake Brake, CD
Stereo, Choice Of Wheels Included,
120,000 Mi, Like New Throughout
\$15,500



**97 DODGE 3500
LARAMIE SLT**
4x4, Dually, Cummins Turbo Dsl,
5 Sp, AC, PW, PDL, Stereo & More
Blue 140,000 Mi Like New
\$15,995



98 CHEV 3500 H.D.
4x4, 1-Ton, 6 5 Turbo Diesel,
5 Spd, AC, All Black, Flawless
Condition & Very Well Kept Truck,
107K
\$12,995



99 FORD F350 XLT 4X4 S.D.
Quad Cab, Dually 7 3 Powerstroke, AT,
AC PW, PDL, Alcoa Alloys, This Truck
Is Like New!! 140K
\$18,995



**96 JEEP GRAND CHEROKEE
LIMITED 4X4** 6 Cyl, AT, PS, PB,
AC, Stereo & In Excellent Cond,
100,000 Mi, All Black w/Leather,
Only **\$8,995**



93 FORD F250 H.D. 4X4
Ext Cab, Longbed, 7 3 International
DSL, 5 Speed, Nice Looking Truck,
Must See, 170K & Well Cared For!
\$7,995

**DIESEL
PERFORMANCE**



- Ford Powerstroke:** 30% More HP!
100 lbs. More Torque!
- GMC 6.5L Turbo:** 40% More HP!
60-90 lbs. More Torque!
- Dodge Ram Diesel:** 50-150 More HP!
100-300 lbs. More Torque!
- High Flow Exhaust & Intake Systems
 - Performance Chips
 - Torque Converters, Throttle Bodies, Auto Lock Kits, Heavy Duty Clutches
 - Exhaust Brakes
 - Performance/High Flow Injectors

SPECIAL!
FREE Glow Plugs
w/6.9, 7.3, 6.2, 6.5 liter
Pump Injector Purchase!

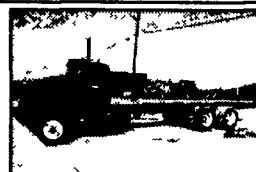
From The Diesel Specialists For Over 45 Years



Penn Diesel Service Co.
Interstate 81 Exit 77, Harrisburg, PA
(800) 535-2913

Mansfield Truck & Equipment Co., Inc.

Phone 570-723-1834 • Fax 570-723-1828
4864 W Roosevelt Hwy (Rt. 6) Mansfield, PA 16933
Heavy Truck Parts - Custom Truck Bodies - Snow Control Equipment
Complete Service Department - Used Trucks & Equipment



1990 Mack RD690S
Engine 250 HP 5 Speed
Double Frame 18 000 Lb
Front Axle 44 000 Lb Rear
\$17 500



**1977 Ford LT9000 Tandem
Dump** 290 Hp Fresh
Overhaul 13 Spd Hydraulic
Tailgate 14 Ft Box Good
Tires \$7 500



1980 GMC Single Axle 366
Engine 5 Speed
Transmission 25 500 GVW
Hydraulic Brakes Good Tires
\$2 300



**1969 Caterpillar 941 Track
Loader** Runs Well
Undercarriage 60% Descent
For Year \$11 000



1990 Neckney Body 26 Foot Body
Thermo King Frig Unit Rear Roll
Up Door Rt. Side Door w/Lift Gate
\$2 000



1993 Caterpillar D5C Dozer
90 Hp Canadian 20 in
Track Pat Blade Exc
Condition \$36 000

**LANCHESTER TRAILER PARTS
SERVICE - INSTALLATION**



Class 2, 3, 4 & 5 Hitches
• Saturday Appointments Available For Installation



Full Line Of Trailer Parts

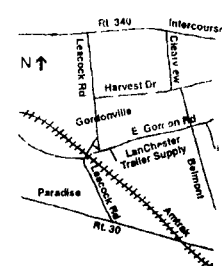
- Brake Controllers
- Ball Mounts
- King Pins
- Wide Load Signs
- Flags
- 12 V Electric Winch
- Vacuum Brake Kit For Truck and Trailers
- Dexter Axles
- Hitches
- Hitch Balls
- Pintle Hooks
- Wide Load Mirror
- Deka Batteries
- 12 Volt Hyd Pumps
- Jacks
- Tires and Wheels
- Lights
- Wiring
- Load Lok

**OVERSIZE LOAD
Signs**

Authorized Distributor For
Federal Signal
Strobe and Revolving Lights,
Amber and Blue
Large Selection In Stock

INSTALL HITCHES • TRAILER REPAIRS • OTHER SERVICE

Now Open For State Inspection On Trailers



**LANCHESTER
TRAILER SUPPLY**

Formerly David A. Fisher Trailers

220 East Gordon Rd., Gordonville, PA
717-768-0663

6:15 - 5:00 M-F
7:00 - 1:00 Sat

