

Weekly Meat Production Under Federal Inspection

WASHINGTON, D.C., May 3 - (USDA-NASS) - Total red meat production under federal inspection for the week ending Sat., Apr. 27, was estimated at 925.6 million lbs., according to the USDA's Agricultural Marketing Service. This was 1.3% higher than a week ago and 9.2% higher than a year ago. Cumulative meat production for the year to date was 2.7% higher compared to the previous year.

MEAT PRODUCTION (million pounds)
(excludes condemned)

Week Ending (1)	Beef	Calf/Veal	Pork (2)	Lamb/Mutton	Totals (3)
03-May-02	542.2	3.7	375.4	4.3	925.6
27-Apr-02	524.3	3.5	381.6	4.2	913.5
Change:	up 3.4%	up 5.7%	dn 1.6%	up 2.4%	up 1.3%
05-May-01	493.6	3.5	346.6	3.6	847.3
Change:	up 9.8%	Up 5.7%	up 8.3%	up 19.4%	up 9.2%
2002 YTD:	8782.7	62.3	6606.6	76.4	15,528.0
2001 YTD:	8432.6	66.0	6539.9	80.9	15,119.4
Change:	up 4.2%	dn 5.6%	up 1.0%	dn 5.6%	up 2.7%

1- Previous week estimates may be revised. Year ago data are actuals.

2- Excludes lard.

3- Totals may not add due to rounding. 2002 totals are subject to revision.

LIVESTOCK SLAUGHTER (head)

Week Ending	Cattle	Calves/Vealers	Hogs	Sheep/Lambs
03-May-02	726,000	19,000	1,885,000	60,000
27-Apr-02	701,000	18,000	1,923,000	61,000
Change:	up 3.6%	5.6%	dn 2.0%	dn 1.6%
05-May-01	692,000	17,000	1,772,000	50,000
Change:	up 4.9%	up 11.8%	up 6.4%	up 20.0%
2002 YTD:	11,592,000	344,000	33,337,000	1,097,000
2001 YTD:	11,582,000	335,000	33,367,000	1,124,000
Change:	up 0.1%	up 2.6%	dn 0.1%	dn 2.4%

AVERAGE WEIGHTS (lbs.)

Week Ending: LIVE:	Cattle	Calves/Vealers	Hogs	Sheep/Lamb
03-May-02 Estimate	1230	327	268	143
27-Apr-02 Estimate	1234	324	268	140
05-May-01 Actual	1187	334	264	144
DRESSED:				
03-May-02 Estimate	751	200	200	72
27-Apr-02 Estimate	752	198	199	70
05-May-01 Actual	717	207	196	72

PERCENTAGE OF TOTAL SLAUGHTERED BY CLASS

Wk Ending	CATTLE				HOGS		
	Steers	Heifers	Cows	Bulls/Stags	Barrows/Gilts	Sows	Boars/Stags
20-Apr-02	48.8%	34.1%	15.3%	1.8%	96.5%	3.2%	0.3%
21-Apr-01	49.7%	32.4%	16.2%	1.7%	96.4%	3.2%	0.3%

Virginia Electronic Feeder Cattle Sale

Richmond, Va.
May 7, 2002

Report Supplied By USDA

Southwest Virginia Electronic Feeder Cattle Sale - Special State Graded Sale at Daleville, May 6: Total receipts 452 head sold; cattle located on farms. Prices per cwt.

STEERS: Chilhowie, Va. - 85 head, Med. and Lge. 1 & 2, 500-625 lbs, avg. 575 lbs 89.50. Saltville, Va. - 64 head, Med. and Lge. 1, 775-875 lbs, avg. 825 lbs 72.90. Crockett, Va. - 58 head, Med. and Lge. 1, 800-925 lbs, avg. wt. 875 lbs 74.25. Tazewell, Va. - 56 head, Med. and Lge. 1, 825-925 lbs, avg. wt. 875 lbs 71.85. Draper, Va. - 55 head, Med. and Lge. 1: 850-950 lbs, avg. wt. 900 lbs 72.00.

VE-STEERS (Head, Med. and Lge. 1, 480-660 lb, avg. wt. 595 lbs 86.75.

HEIFERS: Floyd, Va. - 66 head, Med. and Lge. 1 & 2, 700-850 lbs, avg. wt. 765 lbs, 68.40.

Livestock Cooperative Auction Market Of North Jersey

Hackettstown, N.J.

Report Supplied by Auction

Tuesday, May 7, 2002

CALVES .26-.625.
COWS .34%-.47%.
EASY COWS .31-.44%.
HEIFERS 35-.68.
BULLS .48-.68.
STEERS .47-.68.
HOGS .17-.44.
ROASTING PIGS EACH, NONE.
BOARS .58.
SOWS .22-.24.
SHEEP .18-.54.
LAMBS EA. 27.00-78.00.
LAMBS PER LB. 45-13.5.
GOATS EA. 55.00-135.00.
KIDS EA. 13.00-70.00.
478 HEAD.

West Virginia Feeder Cattle Sales

Charleston, W. Va.
May 3, 2001

Report Supplied By USDA

BUCKHANNON and MOOREFIELD, May 1:

STEERS: 95 head. Med. and Lge. 1: 200-300 lb 90-94.00; 300-400 lb 88-94.50; 400-500 lb 87-96.00; 500-600 lb 75.50-85.50; 600-700 lb 66-76.00. Med. and Lge. 2: 200-300 lb 84.00; 300-400 lb 83-91.00; 400-500 lb 80-86.00; 500-600 lb 84.00. Small 1 and 2: 200-300 lb 64.50; 300-400 lb 90.00; 400-500 lb 71.00; 600-700 lb 74.00.

HEIFERS: 102 head. Med. and Lge. 1: 300-400 lb 77.00; 400-500 lb 71-78.00; 500-600 lb 69-78.50; 600-700 lb 67-74.00. Med. and Lge. 2: 300-400 lb 68-75.00; 400-500 lb 65-79.00; 500-600 lb 56-73.50; 600-700 lb 58.00; 700-800 lb 64-67.00. Small 1 and 2: 300-400 lb 54-68.00; 400-500 lb 55.00; 600-700 lb 52.00.

BULLS: 26 head. 200-300 lb 78.00; 300-400 lb 78.00; 400-500 lb 82-88.50; 500-600 lb 72-80.00; 600-700 lb 73.00; 700-800 lb 66.00. Med. and Lge. 2: 300-400 66-70.00; 400-500 lb 64-74.00; 500-600 lb 62-71.00. Med. and Lge. 2: 400-500 lb 56.00.

Tri-State Weekly Feeder Cattle Sale

Richmond, Va.
May 6, 2002

Report Supplied By USDA

WEEKLY AUCTION at Tri-State, May 3 - FEEDER CATTLE: 302 head. Prices per hundredweight, based on Out Weights.

STEERS: 98 head. Med. and Lge. 1: 200-300 lb 98.00; 300-400 lb 104-110.00; 400-500 lb 91-96.00; 500-600 lb 87-95.00; 600-700 lb 78.50-84.00. Small 1: 400-500 lb 75-84.00; 500-600 lb 70-71.00. Med. and Lge. 2: 200-300 lb 97.00; 300-400 lb 94.00; 400-500 lb 85-90.00; 500-600 lb 83-87.00.

HEIFERS: 126 head. Med. and Lge. 1: 300-400 lb 84-91.00; 400-500 lb 80-85.50; 500-600 lb 75-76.00; 600-700 lb 71.50-75.00. Small 1: 300-400 lb 77-80.00; 400-500 lb 70-77.00. Med. and Lge. 2: 300-400 lb 79-83.00; 400-500 lb 75-79.00; 500-600 lb 73.50-74.50; 600-700 lb 70-73.00; 700-800 lb 67.00.

BULLS: 78 head. Med. and Lge. 1: 200-300 lb 88-92.00; 300-400 lb 92-97.00; 400-500 lb 87-95.00; 500-600 lb 79-84.50; 600-700 lb 71-74.00. Small 1: 300-400 lb 75.50-84.00; 400-500 lb 79-82.00; 500-600 lb 76.50. Med. and Lge. 2: 400-500 lb 81-89.00.

Mercer Livestock Auction

Mercer, Pa.
May 7, 2002

Report Supplied By USDA

CATTLE 376...(PDA). Compared with last week's sale...steers 1.00 higher, cows steady to strong on active market.

STEERS: Choice 2-3 1060-1500 lbs 65.00-68.00; Select 1-3 60.00-64.75, Standard 1-2 48.00-57.00.

HOLSTEIN STEERS: few Choice 2-3 1300-1545 lbs 52.25-58.25.

HEIFERS: Choice 2-4 990-1455 lbs 62.00-67.50, few Select 1-3 55.00-62.75, few Standard 1-2 50.00-55.00.

COWS: Breakers 75-80% lean 41.25-45.00, one 49.00, Boners 80-85% lean 41.50-46.00, Lean 85-90% lean 36.50-42.50. Shells down to 30.00.

BULLS: few Yield Grade 1 1260-1860 lbs 56.00-59.00, Yield Grade 2 1045-2050 lbs 45.50-54.75.

FEEDER CATTLE: STEERS: Medium 1 500-650 lbs 75.00-81.50, few Large 2 375-575 lbs 55.00-59.00, few Medium 2 425-600 lbs 57.00-69.00; HEIFERS: few Large 1 575-750 lbs 61.00-74.00, Medium 1 350-600 lbs 71.00-78.00, Medium 2 300-500 lbs 60.00-78.00; BULLS: Medium 1 325-500 lbs 74.00-85.00, 500-750 lbs 63.00-75.50, Medium 2 400-650 lbs 51.00-70.00.

CALVES 95...VEALERS: Standard and Good 75-100 lbs 30.00-70.00, Utility 50-80 lbs 15.00-20.00.

FARM CALVES: No 1 Holstein bulls 85-115 lbs 115.00-140.00, No 2 85-115 lbs 70.00-115.00; one No 1 Holstein heifers 88 lbs 510.00, few No 2 70-103 lbs 210.00-410.00.

HOGS 52...BARROWS AND GILTS: 49-54% lean 220-240 lbs 33.50-34.00, 45-50% lean 210-280 lbs 30.25-32.50, 40-45% lean 200-300 lbs 25.00-29.75.

SOWS: few 1-3 425-490 lbs 17.50-19.00, few Medium 345-395 lbs 11.00-12.00.

BOARS: few 245-455 lbs 12.00-17.50.

FEEDER PIGS 0...NO MARKET TEST!

SHEEP 3...NO MARKET TEST!

GOATS 7...NO MARKET TEST

New Holland Horses

New Holland Sales Stables

Report Supplied by Auction

Monday, May 6, 2002

253 HEAD, MARKET LOWER. DRIVING HORSES 525.00-910.00, 1 AT 2100.00.

RIDING HORSES 500.00-1435.00. REGISTERED RIDING 1050.00-1775.00.

BETTER RIDING 1650.00-1900.00, 2 AT 2100.00 AND 2900.00.

PONIES 285.00-435.00.

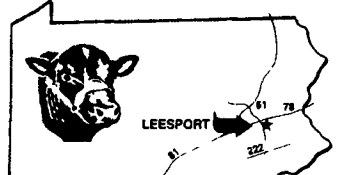
LARGE PONIES 585.00-775.00, 1 AT 1000.00.

COLTS 275.00-550.00. REGISTERED COLTS 1 AT 775.00.

Rye Straw
Heidel
Hollow Farm
610-767-2409

NOTICE: FARM OWNERS
Goodville Mutual Is One of the Top 5 Farm Insurance Companies in Pennsylvania
WANT TO KNOW WHY?

Liz Martin
Martin Insurance Agency
459 C N. George St.
Millersville, PA 17551
(717) 872-7756
Toll Free
1-877-791-5235
www.martininsurance.com
Affordable insurance for farm, home, vehicle, and small business
Agent for Goodville Mutual

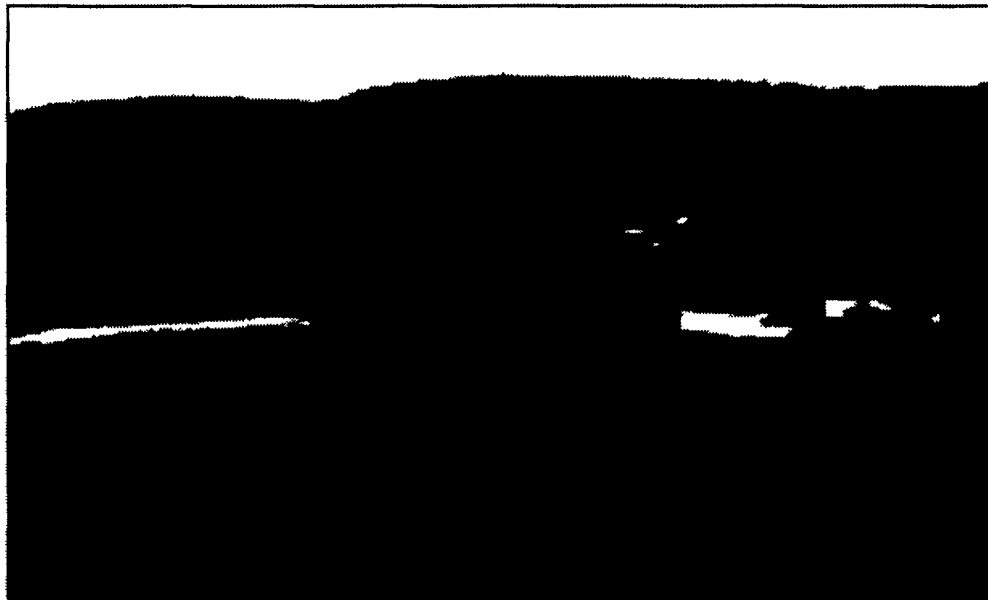
LEESPORT FARMERS MARKET
LEESPORT, BERKS COUNTY, PA 19533 (610) 926-1307
LIVESTOCK AUCTION
EVERY WEDNESDAY - 1:00 P.M.

Farmers Market 9:00 AM to 8:00 PM
Flea Market 7:00 AM to ??
visit our website: www.leesportmarket.com

Metal Roofing & Siding
Since 1948

A. B. Martin Roofing Supply
Why Pay More - For Less
BUY DIRECT • WE MANUFACTURE
Roofing & Siding in the following:
Aluminum • Galvanized • Galvalume
18+ Color Painted, #1 & #2 Material
Low Prices - Fast Delivery, Free Literature
Ephrata, PA 1-800-373-3703
Newville, PA 1-800-782-2712
(formerly Zimmerman Roofing)

THANKS & CONGRATULATIONS

to **BROOKSIDE DAIRY** on the completion of their new 300 cow freestall barn 115' x 264' x 14'



BARN INCLUDES:
SAND BEDS
RUBBER BELTING EQUIPMENT
NORBCO BARN EQUIPMENT
NORBCO SLIDER CURTAIN SYSTEM
EMPIRE AG TUNNEL VENTILATION SYSTEM
CONTROLLED LIGHTING
HERDSMEN OFFICE
DESIGNED AND CONSTRUCTED BY
RYAN CONSTRUCTION, INC.

To get photos of our work, review references from our clients, or discuss your needs, please call **Ken Morgan from KLM at 717-957-9373** or **Joe Ryan at 888-427-0639**

RYAN CONSTRUCTION INC.
Imler, PA • 888-427-0639 • 814-239-8426

So if you need something built, whether it's a bunker silo, complete facility, or anything in between, we'll design and build it just the way you want it.