

**MILLERS AUCTION** **SPRING MACHINERY** **MILLERS AUCTION**  
**CONSIGNMENT AUCTION**  
**SATURDAY, MAY 11, 2002**  
**At 9:00 A.M.**

Located at Area Shopper Complex, Rt. 19, Cochran, PA  
**DIRECTIONS:** 7 miles south of Meadville, PA. on Rt. 19, From I-79 take exit 141 to Rt. 19 south, approx 1 mile to auction. From Mercer Pa. take Rt 19 approx. 20 miles north.

Taking consignments now. We have several items already consigned.  
**TRACTORS:** Ford 600 tractor, Ferguson 30, Ford 861, Ford 9N, 4100 JD 4x4 w/mower deck, Ford 2000, Massey TO35, Massey TO20, Farmall Cub, Farmall 140, 154 Cub Low Boy, Oliver Super 55, walk behind Max1 Man loader Many tractors not listed.

**MACHINERY:** NH 256 hay rake, NH 55 rake, JD rake w/dolly wheel, flat wagons, kicker wagons, gravity wagons, self unloading wagons, Int. 6500 disc chisel plow, 12 ft. Kewanee 9 shank chisel plow, large variety of discs, 12 ft. Kewanee trans. disc, JD 110 trans. disc, 10 ft. Int. trans. disc, 18 ft. wing disc w/harrow, 10 ft., 12 ft. transport discs, JD 3 section spike tooth, Dunham 15 ft. cultimulcher, JD 16 ft. cultimulcher, 2, 3 & 4 btm. plows, Ford 309 2 row corn planter, JD 290 pull type corn planter 2 row, Int. pull type 2 row planter, 5 & 6 ft. brush hogs, JD 613 3 pt. brush hog, NI 323 1 row picker, Cockshutt steel wheeled manure spreader, NI ground driven spreader (nice), NH 411 discbine, NH 7 ft. haybine, NH 853 round baler, round bale feeder wagon, back blades.

**ONE MAN'S COLLECTION OF HIT & MISS ENGINES:** 2-1/2 hp Int. w/pulley on cart, 1 1/2 Int. w/hand clutch on skid, 1-1/2 hp Sattley w/pulley on skids, 1-1/2 hp Witt headless w/pulley on skids, 2-1 1/2 hp McCormick Deerings w/pulleys on skids, 1 3/4 hp Hercules w/pulley on skids w/funnel, JD repo, cart w/walnut skids, 1 1/2 hp Economy, Maytag engines - 2-2 cylinder, 1-model #19, 1-model #92, 2 - parts eng. #92 (could be repaired), 2 - original Maytag plugs marked, 1 - original ball type muffler, books, decals and misc. parts. 1 - 1 qt. Maytag gas can w/spout (shabby cond.), 1 gas driven battery charger cold, 3 buzz coils, 1 new low tension coil & battery, wheels for carts, 6 yrs. of gas engine magazines, 2 - 1 gal. kerosene or gas cans w/handles like new, 10 carbide lights, 5 cans - 1 lb. carbide, replicas of JD tractors, replicas of hit & miss engines (man selling due to health).

**APPROX. 30 TO 40 RIDING LAWN TRACTORS:**  
 John Deere, Cub Cadet, Wheel Horse, Kubota, Troy Bilt and many more. Yamaha snowmobile, 4 wheel golf cart, new 6x10 trailer, new 8x10 shed, new dog houses, soap box derby cars. 1987 Isuzu 4x4, 4 cyl., 5 speed, crew cab w/cap, 106,000 miles.

Several types of hog feeders, hog farrowing crates, slotted floors, auto feeder w/waterer for small pigs, misc. hog items. **TERMS:** Cash or known check day of auction. Millers not responsible for items listed that do not show up for auction.

814-425-7276 Ext. 203 - 9am-5 pm; 814-425-7779 after 5:00 pm

**AUCTIONEERS:**

Simon Miller AU002019-L Kevin Miller AA-002002-L

**Public Auction Register**

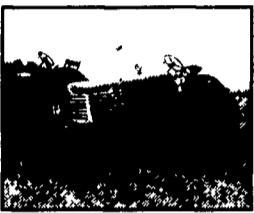
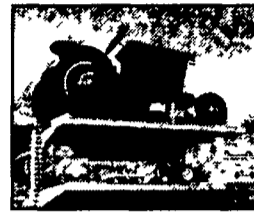
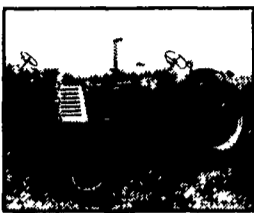
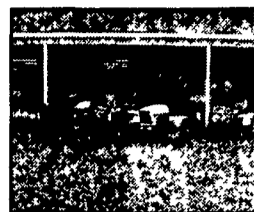
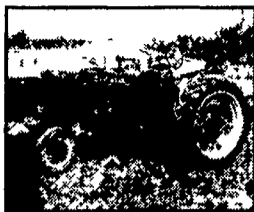
Closing Date Monday 5:00 P.M.

of each week's publication

Internet Sale Register will be updated every Sat. at 2:23 P.M.

THURS MAY 23 - 5PM 2 story residence/garage 179 W. Willow Rd, West Willow, Pa For Russell G Wallick Estate Claude Bechtold auct  
 THURS MAY 23 - 6PM Investment property Mentzer Building 1-3 W Main St, Ephrata For G N P Assoc Witman Auctions 665-5735  
 THURS MAY 23 - 6PM 10 Acre

farmette 106 Distillery Rd, Newmansstown, Heidelberg Twp, Leb Co., Pa Nelson Ebersole AU-001307-L 717-867-1119  
 FRI MAY 24 - 8 30AM Jacob & Mary Jane Fisher Estate 993 Holly Tree Road, Manheim Pa 1000 Goat Related Items, Toys, Tools, Barn, Related Items Witman Auctions AU-001127-L 717 665-5735



**HARRY BARRICK'S**  
**SUMMER CONSIGNMENT**  
**SALE**

455 Center Rd., Newville, PA 17241

Directions: Take 81 to exit 37 (Newville Exit), Take 233 North, Go to the Second Light and Proceed Straight To Center Rd, Turn Right onto Center Rd.

**MAY 18TH, 2002 • 9:00 A.M.**

**SELLING FROM 9:00 AM TO 1:00 PM**

Tools: Bob Beils and Cremo's Will Be Bringing 2 Loads of Merchandise To Sell. Items. Tarps, Gloves, Socks, Tape, Wrench Sets, Knives, Grinders, Hammers, Levels, Shovels, Chisel Sets, Pitch Forks, Clocks, Extension Cords, Floor Jacks, Paint Brushes, Etc... We Also Will Be Selling, Pedal Tractors and Cars, Nascar Cars, Batteries, Hydraulic Oils, Canopies with Posts, Boxes of Candy and Chips, Etc...

**SELLING AT 1:00 PM**

**TENTATIVE LIST**

Farm Equipment: Oliver 70 Standard, Oliver 550 Gas With 7' Mower, Ferguson Tractor, Oliver Row Crop 77, Ford Loader

Lawn Tractors: 160 John Deere 38" Cut Kawasaki Motor and Bagger, Ford YT16 16 HP 42" Cut Clean Looking, Cub Cadet 1420 Hydro 14 HP Kohler 38" Cut and Bagger

Note: The Listed Merchandise Is Subject to Change

The Tire Shop and Toy Farm Museum Will Be Open

Note: PA Sales Tax Will Be Collected Unless You Have Proof Of Sales Tax #

Lunch Stand At Sale Not Responsible For Accidents

Rain or Shine! If Raining Will be Held Inside!

**SHETRON AUCTION SERVICE - TERRY SHETRON AUCTIONEER AU-003732L**

Phone: 776-4344 Chris Bream AA-002786L Harry Barrick Phone: 776-5762

**THE COMPLETE LIQUIDATION AT AUCTION OF**



**L&L BUILDERS, INC. • WINCHESTER • VIRGINIA**

**On-Site SATURDAY • MAY 11, 2002 • 9:30 A.M.**

**NOTICE:** After over 35 successful years in business, L.H. Lipscomb has discontinued operations of L&L Builders Inc and will sell at auction  
**TRUCK CRANES & SUPPORT VEHICLES • CONSTRUCTION EQUIPMENT**  
**FORKLIFTS • CONTRACTOR'S EQUIPMENT & TOOLS • SHOP EQUIPMENT**  
**REMAINING INVENTORY OF BUILDING SUPPLIES**

1974 International Fleetstar 2050A S/A, w/Pittman Polecat 41' auger; CAT Dsl.; 1971 International Fleetstar 2010A T/A, International 6-cyl. gas engine, w/Bucyrus Erie H5 crane, aux. over/under regular drive; 1967 Ford 750, w/Bucyrus Erie H3 crane, clean unit presently in use; 1967 Ford 500, w/Servi-Lift bucket unit, new motor and cable; 1988 Chevrolet C70 S/A Flat Stake Dump, w/toolbox body, racks; 1994 Ford F350XL S/A Crewcab, turbo dsl., Reading utility tool body and ladder attach, sharp!; 1989 Dodge 4x4 Power Ram 250 Pickup Truck, w/snow blade; Case DF 700 Trencher, w/gas engine, backhoe attachment; Case 1845C Uniloader, w/only 827 hours, material bucket, forks will be sold separately; 32' Tri-Axle Equipment Trailer, w/beavertail, ramps; Great Dane Storage Trailer; Allis-Chalmers Forklift, w/21' mast; Towmaster 461-500 Series Forklift, gas engine, 4,000-lb. cap., sideshift; Auger, for backhoe; Jib, for forklift; Briggs 4,400-Watt/8 Hp. Generator; Honda 3,500-Watt Generator; Honda 5 Hp. Portable Air Compressor; Wacker Tamper Unit; Vibrators, w/Wisconsin engines; Stihl BP 10AV Portable Concrete Saw; Concrete Saw, w/Wisconsin engine, mounted on wheels; Eveready Concrete Saw; Briggs Portable Water Pump; Concrete Forms; Clam Shell; Scaffolding; Walk Planks; High-Pressure Washer Unit; Ropes; Safety Equipment; Spreader Bars; Pulleys; Fuel Containers; All Types of Ladders; Seiler Instruments CO. Transit; Support Tools Including Shovels, Brooms and Rakes; Shop Equipment and Tools Including Miller AC Welder/Generator; Adjax VT7350-80 Shop Air Compressor; Drill Press; Metal Band Saw; Craftsman 10" Radial Arm Saw; Bench Grinder; Workbenches, w/vises; Shop Forklifts; Carts; Floor Jacks; Tire Changer; Parts Washer; Shop Toolbox; Koehring Portable Heaters; Welding Supplies; Anvil; Battery Charger; Heavy-Duty Shelving Units; Large Inventory of Power Tools Including Porter Cable, Hilti, Milwaukee, Rockwell, Makita, Skil and Other Makes; All Types of Hand Tools; Large Assortment of Hardware and Small Parts Including Butler; Building Supplies for Butler Buildings; Siding; Spouting; Trim; Panic Door Locks; Doors and Windows; Concrete Blocks; Lumber; Sheets of Metal; Lead; New Motors; Pipe; Fencing; Rebar; Insulation; Paints; Office Furniture and Supplies Including a Business Band Communications System, w/base station, mobile radios; Desks; Drafting Table; File Cabinets; Bookcases; Many Other Related Items Not Listed.  
 • A 30' x 30' Butler Building, w/Overhead Door. **NOTE - THIS IS A VERY PARTIAL LISTING ONLY**

**VALUABLE REAL ESTATE**

**AUCTION OF VALUABLE REAL ESTATE**  
**IN THE STONEWALL INDUSTRIAL PARK**  
**In Prime Location Near WINCHESTER • VIRGINIA**  
**SATURDAY • MAY 11, 2002 • 1:00 P.M.**

For further information, please contact the Auction Company at (301) 739-0538 or visit website [www.ipkoke.com/cochran](http://www.ipkoke.com/cochran)  
**TERMS:** Cash or Approved Check with Positive Identification Required For Registration Not Responsible for Accidents No Buyers Premium

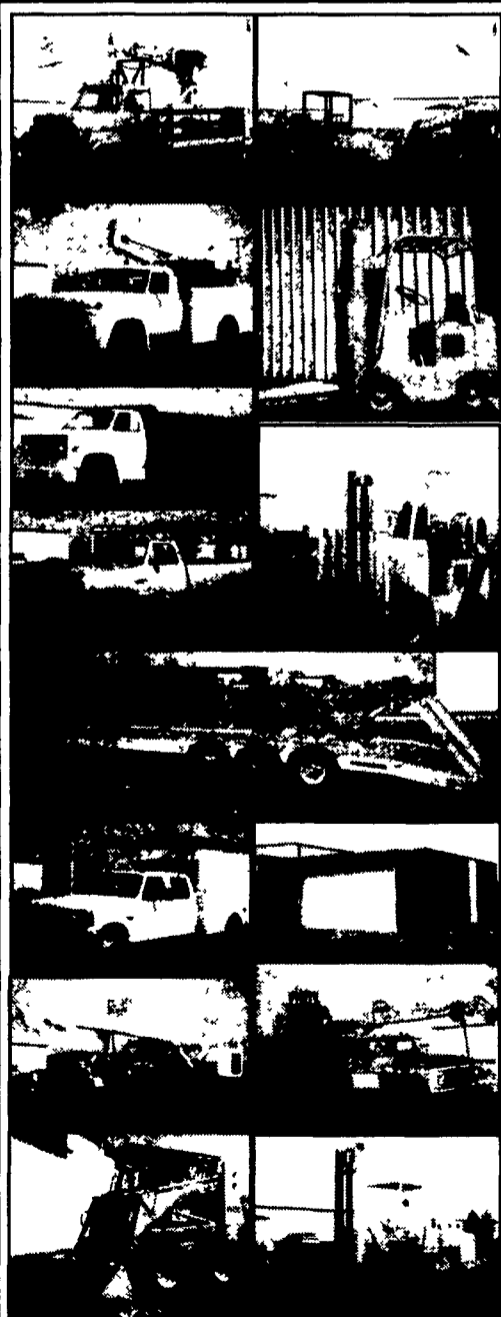
JAMES G. COCHRAN  
 CEO/Auctioneer  
 VA2905001216



THOMAS E. BIKLE  
 Director of Marketing

**PROFESSIONAL CONSTRUCTION & INDUSTRIAL EQUIPMENT AUCTIONEERS**  
 7704 Mapleville Rd., P.O. Box 222, Boonsboro, MD 21713-0222  
 (301) 739-0538 • TOLL FREE (MD) 1-800-310-2844 • FAX (301) 432-2844  
 WEBSITE: [www.ipkoke.com/cochran](http://www.ipkoke.com/cochran)

**NATIONALLY RECOGNIZED - AWARD WINNING AUCTIONEERS SINCE 1972**



**DIRECTIONS:** The auction will be held on-site at the former facilities of L&L Builders located at 225 Lenoir Drive in the Stonewall Industrial Park Located just north of Winchester, Virginia, exit Interstate 81 at Exit 317 onto Route 11 South. Go one block, then right onto Route 661 (Welltown Road) Then left on McGhee Road Then turn left onto Lenoir Drive Watch for auction signage