

35 TRUCKS AND TRAILERS

1973 Ford tandem axle dump truck & 1977 IH single axle dump truck, both diesel, run good, \$9000/both. 717-939-6023

95 GMC Topkick dump truck, 8,000 org. miles, 427V8, 6spd, 30,800 GVW, exc. cond., like new, \$22,500. 610-399-5184.

1993 Ford tri-axle dump, 485 Cat 8-spd trans, 18,000 f/a, 46,000 r/a, 19'6" alum. body. Call for more details. Asking \$44,900 OBO. 888/828-3429

1990 F Super Duty, 450 w/Cummins Diesel, 5.9, just been rebuilt & ready to go! \$6,900. 717-485-5250.

74 Peterbilt COE, tandem axle tractor, 350 Cummins, 13-spd, AC. 717-687-7631



1997 Western Star Model 4964FX WB 272" Cummins M11 400E Trani, RTO 14908LL GVW 64,000, Miles 222,136



1996 Freightliner FL-70 Cummins 8.3 250 HP 6 Sp/Spring Susp/AC, 140,261 Miles, 33,000 GVW, 22 Ft. Reefer Body, Roll Up Rear Door, Thermoking MD II (Will Separate)



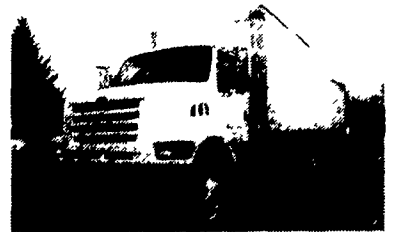
RIFE MOTOR CO., INC.

768 N. Franklin St., Chambersburg, PA 17201

Ask For Steve Bender

Phone: (717) 263-8518

Fax: (717) 263-4293



1998 Ford Model L8501 Cummins 8.3 210 HP, 6 Sp., 32,800 GVW, 128,654 Miles, 22 Ft. Morgan Van Body, Roll Up Rear Door (Will Separate)



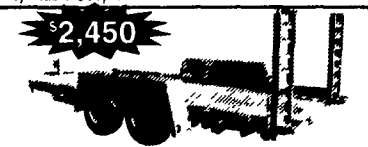
16 ft with Self Storing Ramps Diamond Plate, Electric Brakes on both Axles, 2-3 500 lb Axles Break Away Kit Safety Chair Full 82 in Wide Between the Fenders with Dove Tail \$1,495



24 ft Gooseneck w/20 ft Deck & 4-ft Dove Tail Electric Brakes on 6 000 lb Axles Gross GVW 12,000 lbs Stake Pockets Rub Rail Self Storing Ramps Adjustable Coupler \$2,995



7 x 12 Gooseneck Dumper 10 000 GVW Self Contained Deep Cycle Marine Battery Brakes on both Axles Steel Bed Adjustable Coupler Stake Pockets Rub Rails \$3,600 \$3,995



16-ft Equipment Trailer 10 000 GVW Wood Deck 79 in Between the Fenders Drop Axle Stand Up Ramps Channel Fenders Chain Basket \$2,450



23-ft Long 18-ft Deck & 5-ft Dove Tail, Dual Tandem Adjustable Pintle Plate Oil Bath Axles Spring Assist Ramps, Break Away Kit 20 000 GVW \$4,750



Accessory Pkg. 285.00 SINGLE AXLE TRAILERS

6 x 8	1 525	6 x 10	1 675
6 x 12	1 825	6 x 14	1 975
7 x 10	2 245	7 x 12	2 395

Let Us Custom Build Your Trailer

Appalachian Manufacturing, Inc.

Phone 330-222-2468 www.appalachiantrailers.com Fax 330-222-2283

Ziemer is your ONE STOP TRUCK SHOP!

<p>1995 GMC 1500 EXT CAB, SL, V/8, AC Cruise/Tilt, Cass, Alloys! Super Value. Another Beautiful Local Trade! Was \$8,995 Now \$7,950</p>	<p>1989 GMC SUBURBAN 4x4, 350 V/8 Auto, Dual A/C, PW, PL, Cruise/Tilt, Cass, Alloys, Tutone! Super Sharp! Another Beautiful Local Trade! Was \$9,972 Now \$7,950</p>	<p>1995 JEEP GRAND CHEROKEE LAREDO 4x4, 4.0 6 Cyl, Auto, AC, PL, PW, Cruise/Tilt, CD, Alloys, Super Sharp! Another Beautiful Local Trade! Was \$10,472 Now \$7,950</p>	<p>1995 FORD EXPLORER XLT 945 4x4, 4 Dr V/6, Auto AC, PW, PL, Dual P/Seats Cruise/Tilt, 6 Disc CD, P/Moonroof, Boards TuTone, Gorgeous! Another Beautiful Local Trade! Was \$10,995 Now \$9,950</p>	<p>1995 JEEP WRANGLER 4x4, Auto PS PB Tilt Cass Hard Top Alloys Step Bars 44 000 Orig Miles! None Nicer! Another Beautiful Local Trade! Was \$10,987 Now \$9,950</p>
<p>1995 CHEVY 1500 EXT CAB SILVERADO, AC, PW, PL, Cruise/Tilt, CD, Capt Charrs, Alloys Super Sharp! Another Beautiful Local Trade! Was \$11,475 Now \$9,950</p>	<p>1999 FORD RANGER SUPERCAB XLT SPORT, 4 Dr, V/6, AC, PS PB, Cruise/Tilt CD, Alloys, Sharp! Another Beautiful Truck! Was \$11,995 Now \$9,950</p>	<p>1995 CHEVY 2500 4X4 CHEYENNE, Diesel, Auto AC, Cruise/Tilt, Super Clean! Hard To Find! Another Beautiful Trade! Was \$13,987 Now \$10,700</p>	<p>1996 FORD RANGER SUPERCAB XLT, V6, Auto AC, Cruise/Tilt, Cass, Alloys Low Miles! Another Beautiful Truck! Was \$11,995 Now \$10,950</p>	<p>1998 JEEP GRAND CHEROKEE LAREDO 4X4 6 Spd Auto AC PW P/Seats Cruise Tilt Cass! Another Beautiful Local Trade! Was \$12,995 Now \$10,950</p>
<p>1998 CHEVY 1500 4x4, Silverado, 350 V/8, Auto, AC, PW, PL, Cruise/Tilt, Cass, Alloys! A Lot of Truck, A Little Price! Another Beautiful Local Trade! Was \$14,995 Now \$12,950</p>	<p>1996 CHEVY BLAZER LS 4x4, 4 Dr, V/6, Auto, AC, PW, PL, Cruise/Tilt, PSeat, Alloys, Low Miles! The Nicest '96 You'll Find! Another Beautiful Local Trade! Was \$13,995 Now \$12,972</p>	<p>1996 GMC SIERRA 1500 SLE 4X4, 350 V8, Auto, AC, PW, PL, Cruise/Tilt, CD, Alloys, Super Sharp! Another Beautiful Local Trade! Was \$14,995 Now \$13,472</p>	<p>1996 CHEVY 1500 EXT CAB 4x4 V8, Auto, AC, Cruise/Tilt, Cass, Alloys, Cap! Super Clean! Another Beautiful Local Trade! Was \$15,995 Now \$14,900</p>	<p>1998 CHEVY 2500 H.D. EXT CAB Diesel, Auto, AC, PS, PB, Cruise/Tilt, Cass Ready to Tow! Another Beautiful Truck! Was \$16,995 Now \$14,950</p>
<p>1997 GMC SONOMA EXT CAB SLS 4X4 V6, Auto, AC, Cruise/Tilt, CD, Alloys, Super Clean! Another Beautiful Local Trade! Was \$15,995 Now \$14,987</p>	<p>1995 FORD F150 S/CAB 4x4 EDDIE BAUER, V8, Auto, AC, PW, PL, Cruise/Tilt, Cass, Alloys, Boards, Super Clean! Another Beautiful Local Trade! Was \$16,995 Now \$15,987</p>	<p>1998 CHRYSLER T & C LXI, 3.8 V/6, Auto, Dual A/C, PW, PL, Cruise/Tilt, CD/Cass, Lith Quad Seating w/PSeats & Driver Memory, Traction, Gorgeous! Another Beautiful Local Trade! Was \$17,987 Now \$15,987</p>	<p>1999 GMC 1500 SL 4x4, V/8, PS, PB, Cass, Alloys, Low Miles! Super Clean! Another Beautiful Local Trade! Was \$17,475 Now \$15,995</p>	<p>1999 DODGE GRAND CARAVAN SE, V/6 Auto, Dual A/C, PW, PL, Cruise/Tilt, P/Seats, Quad Seats, Super Low Miles! Another Beautiful Local Trade! Was \$17,995 Now \$16,987</p>
<p>2001 CHEVY S-10 EXTREME EXT. CAB, 4.3 V/6, Auto, AC, PW, PL, Cruise/Tilt, CD, Alloys, Hot Truck, Cool Price! Another Beautiful Local Trade! Was \$17,995 Now \$16,987</p>	<p>1999 JEEP GRAND CHEROKEE LAREDO 4x4, 4 Dr, 6 Sp, Auto, AC, PW, PL, P Seats, Cruise, Tilt, Cass! Another Beautiful Local Trade! Was \$19,987 Now \$17,972</p>	<p>1998 CHEVY 1500 4x4 SILVERADO Z71 EXT CAB 350 V8, Auto, AC, PW, PL, Cruise/Tilt, Boards, Sharp Tutone! Gorgeous! None Nicer! Another Beautiful Local Trade! Was \$19,995 Now \$18,472</p>	<p>1999 GMC SIERRA 2500 EXT CAB SL, 4x4, 350 V8, Auto, AC, Cruise/Tilt, Cass, Powered Wheels, Super Sharp! Another Beautiful Local Trade! Was \$20,995 Now \$18,900</p>	<p>1999 GMC JIMMY SLT 4x4, 4 Dr V/6 Auto, AC, PW, PL, Cruise/Tilt, P/Seats, Leather, Moonroof, CD, As New As It Gets! Was \$19,987 Now \$18,972</p>
<p>1999 GMC SIERRA 1500 EXT. CAB 4x4, 5.3 V8, Auto, AC, PW, PL, Cruise, Tilt, P Seats, CD/Cass, Another Beautiful Local Trade! Was \$21,995 Now \$19,472</p>	<p>1997 FORD F250 XLT SUPERCAB 4x4 351 V8, Auto, AC, PW, PL, Cruise/Tilt, Sharp Tutone, Alloys, You Won't Find A Nicer H D! Another Beautiful Truck! Was \$20,987 Now \$19,472</p>	<p>1997 FORD F150 S/CAB 4X4 LARIAT, V8, Auto, AC, PW, PL, P Seat, Leather, 17" Wheels, Immaculate! Another Beautiful Truck! Was \$20,997 Now \$17,900</p>	<p>2001 PONTIAC MONTANA 4 Dr, V6, Auto, Dual A/C, PW, PL, P Seat, Cruise, Tilt, CD, Traction, Onstar, Power Door, Low Miles! Another Beautiful Van! Was \$23,995 Now \$20,900</p>	<p>1998 CHEVY 1500 EXT CAB 4x4 Z71, 350, V/8, Auto, AC, PW, PL, Cruise/Tilt, Alloys! Low Miles! Another Beautiful Local Trade! Was \$22,475 Now \$20,987</p>
<p>1998 GMC 2500 EXT. CAB SLE 4X4, V/8, Auto, AC, PW, PL, P Seat, Cruise/Tilt, Cass, Sharp TuTone! None Nicer! Another Beautiful Truck! Was \$22,995 Now \$21,987</p>	<p>2001 DODGE RAM 2500 SLE CLUB CAB, 4 Dr, V/8, Auto, AC, PW, PL, Pseat, CD/Cass, 10,000 Miles! Another Beautiful Local Trade! Was \$24,995 Now \$22,900</p>	<p>2000 GMC SIERRA 1500 SLE 4 Dr, Ext Cab, 4x4, 5.3 V8, Auto, AC, PW, PL, Cruise, Tilt, Low Miles! Another Beautiful Local Trade! Was \$26,995 Now \$24,987</p>	<p>2000 CHEVY 1500 MARK II LE HIGH TOP CONVERSION V8, Auto, Dual AC, PW, PL, P Seat, Cruise, Tilt, Front/Rear CD, P Bed TV, VCR, Quad Buckets, None Nicer, Super Low Miles! Another Beautiful Van! Was \$27,987 Now \$25,990</p>	<p>2000 FORD E-150 L.A. WEST HIGHTOP CONVERSION, V8, Auto, Dual A/C, PW, PL, Cruise/Tilt, PSeat, Leather/Cloth CD TV VCR P/Sofa Bed, Super Sharp! Ready to Travel! Another Beautiful Van! Was \$27,995 Now \$25,900</p>

NEW HOLLAND
Hours: Mon.-Thurs. 9-8:30
Fri. 9-6 & Sat. 9-3

www.ziemernewholland.com

Ziemer

A Name You Can Trust

BUICK PONTIAC GMC TRUCK

354-4451 • 1-800-824-2277

Tax and Tags Additional

We Are Trucks!