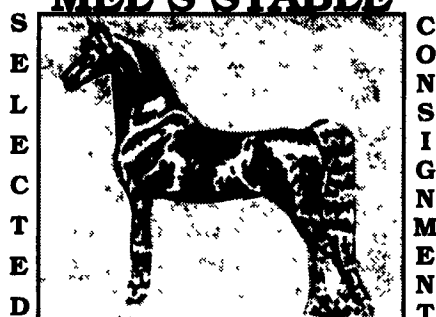


# Dairy and Livestock Sales

## MEL'S STABLE



**DRIVING, WORK HORSE SALE  
SATURDAY, MAY 4, 2002 - 9:00 AM**

**NOTICE: NEW SALE TIME 9:00 AM**

**HORSES HITCHED AT 8:30 A.M. SHARP**

**SALE HELD AT 834 WALLACE RD., NEW HOLLAND, PA**

**DIRECTIONS: FROM RT. 23 IN NEW HOLLAND, GO SOUTH ON BRIMMER AVE., GO 2 MILES SOUTH ON NEW HOLLAND ROAD TO HILL RD. TURN LEFT ON HILL RD. PROCEED 1.2 MILES TO SALE ON THE LEFT. FROM RT. 340 EAST OF INTERCOURSE TAKE NEW HOLLAND RD., 2.5 MILES TO HILL RD., RIGHT ON HILL RD. TO SALE ON LEFT.**

### SPECIAL MENTION FOR MAY 4TH

- 4 Year Old 16.2 Hand Dark Bay Horse, Sire Is Added Status With A Cummin Dam, Sharp Horse!
  - 8 Year Old With A Speedy Crown Sire, Dam Is Perfect Harry, 16 Hand Dark Bay Horse, Upheaded And Sharp!
  - 3 Year Old 16.1 Hand Horse, Sire Is Keystone Smothers, Dam Is Prakas; Jet Black With A Little White
  - 8 Year Old 16 Hand Horse, Sire Is Speed In Action, Dam Is Defiant Yankee, 16 Hand Bay Horse With White Markings, Sharp Horse With A Record of 1.57 On The Trot!
  - 10 Year Old Dark Bay 16.1 Hand, With A Final Score Sire And A Big John Dam, Upheaded And Very Fancy!
- Jerome Wanner got these horses right off the track and will have them on the road 2 weeks by day of sale!

**APPROX. 75 HEAD OF STANDARD BRED HORSES**

**APPROX. 50 HEAD OF SADDLEBRED HORSES**

- |                                 |                               |
|---------------------------------|-------------------------------|
| 1 Load From Jerome Wanner       | 1 Load From Sam Esh Jr.       |
| 1 Load From Elam Esh            | 1 Load From Stephen Stoltzfus |
| 1 Load From Christ Z. Stoltzfus |                               |

### MEL'S STABLE

**OWNER - MEL HOOVER**

**PHONE - HOME - 717-354-8397 BARN - 717-354-6431**

**AUCT. MEL HOOVER AU003111L**

**NOT RESPONSIBLE FOR ACCIDENTS FOOD ON PREMISES**

**Next Horse Sale: June 1, 2002**

## AUCTION

**OF DAIRY HERD, FARM MACHINERY,  
SILO AND MILKING EQUIPMENT**

**THURSDAY, MAY 2, 2002 AT 10:00 A.M.**

**LOCATION: From Lewistown, PA. Take Route 522 North Approx. 4 Miles, Turn Left on Kearns Rd., Go 1/2 Mile. Turn Right on Dry Valley Rd., Go Straight Approx. 1 Mile to Farm**

### DAIRY HERD, SELLING AFTER MACHINERY

- (30) Milking and Dry Cows - Majority Holsteins
- (4) Linebacks - (2) Jerseys - (1) Brown Swiss
- Several Recently Fresh - (4) Springing Close - Others in Various Stages
- (4) Bred Heifers - (4) Heifers Ready to Breed
- (11) Yearlings and Heifer Calves
- Tie Stall Milked - Selling Milk to MD & VA Dairy - Fat is Averaging 3.8 and Somatic Cell is from 200 to 300
- Everything Bred A-I to Select Sire Power

### SILO & DAIRY EQUIPMENT

Fickes 18x60 Silo with Van Dale Unloader - Berg Gutter Cleaner (approx. 20 ft. Chain) - (6) Barn Fans - 2" Plastic Vacuum Line - (28) Water Bowls - Weaverline 24 Bu. S.S. Elec. Feed Cart - DeLaval 76 & 73 Milker Pumps Bender Dumping Station - Majonnier 400 gal Bulk Tank - (5) DeLaval Bucket Milkers (late model pulsation) - (3) 55 lb. Pails - S.S. Wash Tubs Ele. Hot Water Heater & Other Dairy Supplies

### PICK-UP & FARM MACHINERY (SOLD FIRST)

- |   |   |
|---|---|
| 88 Ford F150, 4x4, Extended Cab, 76K, New Motor, Fully Loaded | Fox 425 Harvester (single row corn & grass heads) |
| Case 730 Comfort King Tractor                                 | (3) Wooden Rack Bale Wagons                       |
| Case 530 Tractor  | (3) Flat Bed Wagons                               |
| Farmall H   | N.H. 25 Blower                                    |
| I.H. 826, N.F., 3 pt. (Cracked Block)                         | M.F. 3 pt., 3 Bottom Plow                         |
| Mustang 330 Skid Loader                                       | Case 3 pt., 3 Bottom Plow                         |
| N.H. 520 Spreader   | I.H. 4 Bottom Trip Back Plow                      |
| Martin Side Shot Spreader                                     | Brillion Cultipacker                              |
| I.H. 1190 Haybine   | Lever Harrow                                      |
| I.H. 56, 4-row Planter  | I.H. 10 ft. Disc                                  |
| Buffalo 28 ft. Hay Elevator, 2 yrs. old                       | (3) Gravity Bin Wagons                            |
| N.H. 55 Hay Rake  | I.H. Single Row Picker                            |
| M.F. 124 Baler with Kicker                                    | Gehl 72 Flail Chopper                             |
| Grimm Hay Tedder  | 3 pt. Scraper Blade                               |
| Badger Tandem Forage Wagon                                    | Single Axle Cattle Trailer                        |
| Papec Forage Wagon  | I.H. 10 Grain Drill                               |
| Farmland Forage Wagon   | (7) Wooden Calf Hutches                           |

Plywood Feed Bin - Mow of Heifer & Horse Hay - Few Round Bales of Straw - Approx. 3 Doors of Corn Silage

I.D. Required for Bidder's No - Not Responsible for Accidents or Loss

Sale Managed By: **OWNER: RICHARD SCYOC**  
**KLING'S AUCTIONS, INC.** 379 Pleasant Valley Rd., Lewistown, PA  
 Landisburg, PA 17040 Barn Phone: 717 543-5965  
 PA Lic. #000500  
 Phone 717 789-3883

## Public Auction Register

**Closing Date Monday 5:00 P.M.  
of each week's publication**

**Internet Sale Register will be updated  
by Friday at 12 Noon**

**ATTENTION AUCTIONEERS**

**All sales register info needs complete address,  
street, town, county & state.**

TUES JULY 9 - 8AM Special Fed Cattle Sales Earlybird pens close at 2 PM Exit 44 off I-81 turn south then left onto Alexander Spring Rd 717-249-4511

TUES JULY 9 - 7:30 PM Feeder Cattle Sale Carlisle Livestock Market Inc Exit 44 off I-81, turn south then left onto Alexander Spring Rd 717-249-4511

FRI JULY 12 - 9AM Tractors, farm eq., & supplies A&C Diffenbach Auct Inc AU2258L

FRI JULY 12 - 1PM State Graded Feeder Pig Sales, Carlisle Livestock Market Inc Exit 44 off I-81 turn S then left onto Alexander Spring Rd 717-249-4511

FRI JULY 12 - 7PM Dairy Sale Middleburg Livestock Auction Sales, Inc PO Box 185, Middleburg, Pa Clarence Shirk and John Shirk, owners 717-656-8793

TUES JULY 16 10 AM Farm equip, shop items, 3709 N Colebrook Rd, Manheim, Pa for Duane E Lehman Jim Hershey AU2479L 717-665-7284

WED JULY 17 & THURS JULY 18 - Marion Auction Service, 5174 Horst Road, Chambersburg, Pa 717-375-4700

FRI JULY 19 - 6PM Horse Sale New Holland Sales Stables, Inc 101 W Fulton St, New Holland Pa

FRI JULY 19 - 7PM Horse and Tack Sale Red Carpet Horse Company At Carlisle Livestock Exit 44 off I-81 turn South then Left onto Alexander Spring Rd, Chrs 814-886-5228, Kevin 814-886-4864

TUES JULY 23 - 8AM Special Fed Cattle Sales Earlybird pens close at 2 PM Exit 44 off I-81 turn south then left onto Alexander Spring Rd 717-249-4511

TUES JULY 23 - 9AM Quilt, craft & buggy A&C Diffenbach Auct Inc AU2258L

WED JULY 24 - Farm Equipment 109 N Maple Ave, Leola, Pa Wolgemuth Auction #21357 717-656-2947

FRI JULY 26 - 1PM State Graded Feeder Pig Sales, Carlisle Livestock Market Inc Exit 44 off I-81 turn S then left onto Alexander Spring Rd 717-249-4511

SAT JULY 27 - Horse Sale 11AM Middleburg Livestock Auction Sales, Inc PO Box 185, Middleburg, Pa Clarence Shirk and John Shirk owners 717-656-8793

**Lancaster Farming**

**Check out our Website**

[www.lancasterfarming.com](http://www.lancasterfarming.com)

## 28th Annual WESTERN PA SHEEP & CLUB LAMB SALE

**SAT., MAY 11, 2002 6:30 P.M.**  
**MERCER COUNTY 4-H PARK**

**MERCER, PA**

140 EWES 28 RAMS 90 WETHERS

For information or catalog  
Phone 724/662-3141 Robert Calvert

Again this year - Shepherd's Equipment Auction  
Starting at 5 00 p m  
Educational youth program 3 00 p m

## Belleville Livestock Market

**Wednesday, May 1, 2002  
at 1:30 PM**

We will be selling on consignment a Bradford County herd consisting of 33 Holstein milk cows, 15 linebacks and crossbreds, and 40 heifers and calves. The milk cows consist of 20 recently fresh, 5 dry and the rest in all stages of lactation. This herd is averaging 50 lb. per cow, has a low somatic cell count, and has never been pushed with fancy feed.

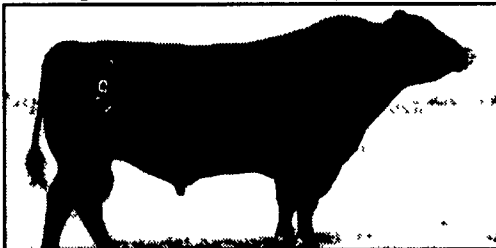
There are 6 bred heifers, 8 yearlings, 15 from 6 months to a year old, and 11 calves.

**For more info: (717)667-2703 Gene Glick  
(717)935-2146 Sale Barn**

## THE 67TH ANNUAL NEW YORK STATE ANGUS SALE

**THE WORLD'S OLDEST CONTINUOUS ANGUS SALE**  
**Noon Saturday, May 11, 2002**  
**Held at Bippert's Farms, Alden, NY**

60 Select Lots sell  
 • Productive Cow/Calf Pairs Many With Heifer Calves at Side by Leading A.I. Sires  
 These cattle have been selected from New York's leading performance Angus programs.  
 Featuring the influence of these great A.I. sires



**ROCKN D AMBUSH 1531**

Sale sponsored by the New York State Angus Association.  
**President:** Aaron Trowbridge, 139 Prospect Hill, Clinton Corners, NY 12514 (845) 266-4201  
**Vice President:** Doug Giles, RRI, Box 403B, Amenia, NY 12501 (845) 373-8731  
**Secretary:** Kathleen Trowbridge, 139 Prospect Hill, Clinton Corners, NY 12514 (914) 266-4201  
**Treasurer:** Amy Mills, 446 Broadway, Apt 4, Darien Center, NY 14040 (716) 547-3741  
**Sale Chairman:** Mallory Mort, 658 Old Post Road, Ghent, NY 12075 (518) 392-3970  
 For your free reference sale booklet, contact anyone in the offices of the Sale Managers, **Tom Burke, Kurt Schaff, or Rance Long, American Angus Hall of Fame at the World Angus Headquarters**, Box 660, Smithville, MO 64089-0660 Phone (816) 532-0811 Fax (816) 532-0851 E-Mail angushall@earthlink.net www.angushall.com



## Meadow Lark Dairy

To be sold at  
**Smoketown Quality Dairy Sales,  
 Smoketown, PA**

**Friday, May 10, 2002  
7:30 P.M.**

- 50 cow dairy from Ontario, Canada A.I. breeding for 51 years. Eastern & Semex used on herd Very popular sires used.
- 24 - 2 yr olds, 18 - 3 yr. olds, 8 - 4 yr olds Balance other
- 11 cows milking over 100 lbs. 38 cows milking 64 lb.
- 99 lb Super Milk award for 10 years in a row 27 cows fresh in the last 60 days
- 18 cows due June, July and August, September, October, balance thru the year S.C.C. under 100,000
- 10 springing heifers 6 to 8 mo. old No T.M.R. - No B.S.T.

**• More Details Next Week!**

Sale Managed By  
**SMOKETOWN QUALITY DAIRY SALES**  
 Gordon & Helen Fritz  
 717-393-0930

**"We Are Small, But We Do It All!!!"**

## Special Catalog Driving Horse & Pony Sale



**SATURDAY**

**May 18, 2002**

**At Mel's Stable**

Directions: from Rt. 23 in New Holland, go south on Brimmer Ave., go 2 miles south on New Holland Rd. to Hill Rd turn left on Hill Rd proceed 1/2 miles to sale on the left From 340 East of Intercourse take New Holland Rd., 2-1/2 miles to Hill Rd., right on Hill Rd. to sale on left

**Horses hitched at 9:30 A.M.  
 Horses sold at: 11:30 A.M.  
 Ponies sold at approx. 2:00 P.M.**

If you have a TOP driving horse or pony, call Mel Hoover to reserve your horse's number in the sale at 717-354-6431 or 717-354-8397.

Horses must be at Mel's Stable by May 15, 2002, and the barn will be open from dawn till dusk from May 15th till day of the sale for people to come look at and drive the horses.

**Limited Consignments:**

**100 head**

Mel Hoover - Auctioneer  
 AU-003111-L

