

Public Auction Register

Closing Date Monday 5:00 P.M.
of each week's publication

Internet Sale Register will be updated
by Friday at 12 Noon

ATTENTION AUCTIONEERS

All sales register info needs complete address,
street, town, county & state.

SAT JUNE 8 - 10AM Cheney Orchards, Brimfield MA Tractors orchard equip apple bins convection ovens, antiques Phil Jacques Inc 413-569-6421
SAT JUNE 8 - 1PM Real Estate 197 Fruitville Pike, Manheim Brick Rancher Phil & Shelby Leeds Art Pannebecker Auct Service
WED JUNE 19 & THURS JUNE 20 - Marion Auction Service, 5174 Horst Road Chambers-

burg, Pa #17-375-4700

SAT, JUNE 8 - 10AM Wayland (Steuben Co) NY James Gibson Auction of Potato, grain, and hay ing equip Pirrung Aucts, Inc

TUES JUNE 4 - 6PM Horse Sale New Holland Sales Stables, Inc 101 W Fulton St, New Holland, Pa

TUES JUNE 4 - 7:30 PM Feeder Cattle Sale Carlisle Livestock Market Inc Exit 44 off I-81, turn south then left onto Alexander Spring Rd 717-249-4511

SAT JUNE 8 - 10AM Pavilion Mixed ages & gages Blue Room, Mighty Marx tractors & accessories Ted Maurer AU-000593-L 610-323-1573

FRI JUNE 14 - 9AM Tractors, farm eq & supplies A&C Diefenbach Auct Inc AU2258L

FRI JUNE 14 - 4PM 4 bdrm, w/2 car garage, Millcreek Twp Leb Co, Pa 245 Cocalico Rd David A & Suzette D Shaak, owners Kline, Kreider & Good 733-1006 #499, 32116, #3433

FRI JUNE 14 - 1PM State Graded Feeder Pig Sales, Carlisle Livestock Market Inc Exit 44 off I-81 turn S then left onto Alexander Spring Rd 717-249-4511

FRI JUNE 14 - 7 PM Dairy Sale Anniversary Middleburg Livestock Auction Sales, Inc PO Box 185, Middleburg, Pa Clarence Shirk and John Shirk, owners 717-656-8793

SAT JUNE 15 - 9AM Farm equip, antiques, tools, household goods at the farm, 95 Greble Rd, Jonestown, Leb Co, Pa Glenn and Connie Landis, owners Neilson L Ebersole, auct AU001307-L 717-867-5221

FIFTH ANNUAL CONSIGNMENT SALE FOR GRATZ AREA FIRE COMPANY & AMISH PAROCHIAL SCHOOLS OF UPPER DAUPHIN COUNTY SATURDAY, MAY 4, 2002 AT 9:00 A.M. LOCATED AT GRATZ FAIR GROUNDS FROM I-81, EXIT 34 TAKE 25W TO GRATZ AND FROM MILLERSBURG ROUTE 25 TO EAST END OF GRATZ

FARM EQUIPMENT: SOLD APPROX. 10:00 A.M. D&S Manure Spreader w/tandem axle; 8' Dry Hill Manure Pump; 8x18 Bale Throw Wagon, 2-Bottom 12" Oliver Trailer Plow; New 16' Wagon; IVA Field Sprayer, 24 Blade JD Disk; 326 N32 Idea 2-Row Picker; Gehl Harvester w/Table; 1-65 lb. New Milker Bucket; 1-75 lb. New Milker Bucket, JD 2440 Tractor 2500 Hrs., A-1 Cond.

SHEDS: SOLD APPROX. 12:00 P.M. Storage Sheds Various Sizes, 8x8 to 12x24, One Car Garage.

LAWN FURNITURE: Variety of Picnic Tables, Lawn Furniture, Swings, Chairs, etc.; Rose Arbors, Swingsets; Poly Lumber Washing Wells; Gazebo; Bridges

NURSERY STOCK: Assorted Stock, Azaleas, Rhododendrons, Evergreens, Shade and Flowering Trees; Arborvitae & Globe Arborvitae. **TRUCKLOAD ASSORTED HANGING BASKETS AND GERANIUMS FOR MOTHER'S DAY. BRING YOUR MOTHER TO GRATZ.** **QUILTS AND CRAFTS:** QUILTS SOLD APPROX. 10:00 A.M. Assorted Quilts and Quillos; Wall Hangings and Various Pine Furniture and Crafts, Birdhouses, Birdfeeders, Lighthouses, etc.

DONATIONS: SOLD AFTER SHEDS Meckley's 15 Ton 2RC delivered FOB: Eastern Industry 40 Ton 2RC

HORSES AND MULES: SOLD APPROX. 1:00 P.M. Saddle Bred & Standardbred by Christ Stoltzfus; A few Top Standardbred horses by Reuben King; Standardbred by Adam Hoover; Local Horses and Ponies.

POWER TOOLS, ROUGH LUMBER & BLDG. MATERIALS: SOLD APPROX. 10:00 A.M. Bldg Material, Power Tools; Rough Lumber; 4' Concrete Troller; 6" Grisly Joiner. Heavy Duty. New Misc. Replacement Windows

TO CONSIGN LUMBER PLEASE LEAVE MESSAGE @717-365-3341.

HORSE RELATED ITEMS: 1 New Spring Wagon, 1 New Breaking Cart, Used Carriage.

HAY, STRAW & SHAVINGS: SOLD AFTER FARM EQUIPMENT

NEW MISC. ITEMS: Wheelbarrows; Rakes; 8 New Bicycles; Large Selection Items.

LAWN AND GARDEN: SOLD APPROX. 10.00 A.M. Riding Mowers, Push Mowers & Various Lawn and Garden Tools and Equipment, 8 HP Troy Bilt, Chipper, Shredder, Lawn Vacuum.

NEW & USED HOUSEHOLD FURNITURE & ANTIQUES: SOLD APPROX. 11.00 A.M.

TRAILERS & VEHICLES: 1989 Nomad 24' Full Self-Contained Camper, Air Roof; Utility Trailer.

MISC.: Truckload of Produce, Misc. Paints & Tools; Many more items too numerous to mention

CONSIGNMENT ITEMS WANTED

We Are Looking For Farm Equipment, Tools, Household Goods, Crafts, Quilts and Other Worthy Merchandise.

No Pets, No Poultry Equipment, No Unsaleable Items.

DURING SALE WEEK FOR INFORMATION CALL (717) 365-3953 MAY 1ST, 2ND, 3RD & SALE DAY THE 4TH.

\$20 Deposit on all Appliances and \$10 Deposit on all Tires will be required, which Will Be Refunded Upon Removal If Item Is Not Sold. (EVERYTHING WILL NEED TO BE MOVED FROM FAIRGROUNDS BY 4:00 PM ON WED., MAY 8TH.)

WE WILL RECEIVE CONSIGNMENT ITEMS ON MAY 1ST, 2ND & 3RD.

FOR MORE INFORMATION OR QUESTIONS CALL 365-3992 OR 365-3923 AND LEAVE MESSAGE

SALE COMMITTEE RESERVES THE RIGHT TO REJECT ANY MATERIAL OR ITEMS NOT IN GOOD CONDITION.

MANY ITEMS EXPECTED NOT LISTED.

MOST ITEMS WILL BE SOLD UNDER ROOF

IF INCLEMENT WEATHER.

WATCH FOR SALE BILL 2 WEEKS PRIOR TO SALE.

DONATED ITEMS APPRECIATED.

VISA CARD & MASTERCARD ACCEPTED, 2% CHARGE ON EACH C/C SALE, NO OUT-OF-STATE CHECKS.

WILL BE SELLING WITH 3 OR 4 LOCAL AUCTIONEERS NOT RESPONSIBLE FOR ACCIDENTS

CHICKEN BAR-B-Q, PIG ROAST

HOMEMADE ICE CREAM, BAKE SALE PLENTY OF GOOD FOOD THIS IS NOT AN ABSOLUTE SALE.

PUBLIC AUCTION

SATURDAY, MAY 4, 2002 AT 9:00 A.M.

1829 New London Road (Route 896), Landenberg, Franklin Twp., Chester County, Pennsylvania

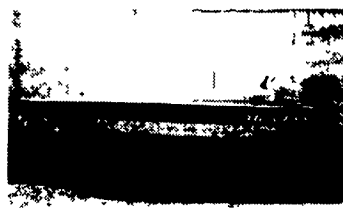
Directions 6 Miles South Of Route 1 Or 6 Miles North Of Newark, Delaware



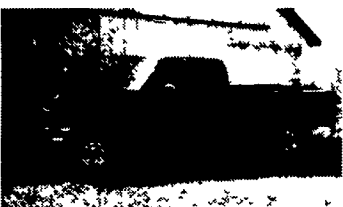
1934 Model A Speedster, Parade Car, Runs & Looks Good, A Fun Car!



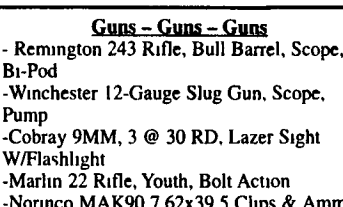
1969 Camaro, Orange W/White Stripes, 454 Motor, 4-Spd, Fast!



14' Tracker Bass Boat W/Trailer, W/Electric Motor. Complete!



1996 Ford Pick-Up, 4x4, Turbo-Diesel, Gooseneck Trailer Hook-Up, Clean



Guns - Guns - Guns

- Remington 243 Rifle, Bull Barrel, Scope, Bi-Pod
- Winchester 12-Gauge Slug Gun, Scope, Pump
- Cobray 9MM, 3 @ 30 RD. Lazer Sight W/Flashlight
- Marlin 22 Rifle, Youth, Bolt Action
- Norinco MAK90 7.62x39 5 Clips & Ammo
- Ruger 223 Rifle, Mini 14, Semi-Auto, 2 N1 B



1997 Featherlite 3-Horse Trailer W/Dressing Room, Hardly Used!

Tractors, Tools, Building & Farm Materials:

International Cub Tractor W/A Woods Belly-Mount Mower, Gas Powered Yamaha Golf Cart, Dewalt Table Saw, Ladders (Assorted Sizes), C-Clamps, Tow Chains, Gravely Mower W/Sickle Bar Attachment, 16' Metal Gates, Big Lime/Seed Spreader, W/W Carpets (New), Fencing (Assorted), Fertilizer, Feed Trough, Shovels, Hardwood Floor, Garden Tools, Rock Salt, Office Trailer, 50 Gallon Bucket, Vinyl Siding, Spray Paint, Pitch Forks, Commercial Free-Standing Shelving W/Peg Board, Hand Tools, Garden Hose, Sprinklers, Lumber, Lime, Windows (New), Restaurant Tables (Small), Metal Fence Post, Hardware

Horse Items:

Driving Harness (New & Used), Military Saddle, Saddle Bags, Bridles, Buckets, Blankets

Antiques & Household Items:

4' Oak Round Table, 2 Roll Top Desks, Large Executive Desk, Crocks, Sofa W/High Back Chairs (New), Brass Floor Lamp, Paintings, Saw Blade, Candles & Holders, Glass Tables, Luggage (Hard & Soft), Baskets (Assorted), Rocking Chair, Crtb, Bassinet, High Chair, Refrigerator, Freezer, Television, Light Fixtures, Mirrors, Milk Stools, Toys, Bicycles, Wagon

Hunting & Fishing Items:

Canoe, Fishing Poles, Gun Cases, Binoculars, Tree Stands, Evinrude 20 Hp Outboard Motor W/Gas Tank & Lines

Other Miscellaneous Items:

Too Numerous To Mention

NOTICE: Terms Of Sale Cash, Good PA Check, MC & Visa

Neither Seller Nor The Auctioneer Assume Any Liability For Hurt Or Damages To Anyone Attending This Auction! Announcements Made Day Of Sale Take Precedence Over All Printed Material

FOOD SERVED!

AUCTIONEER: David W Yearsley #AU-003932-L

CONDUCTED & MANAGED BY: Tim Page

SALE SITE PHONE #: (610) 255-5237

PUBLIC AUCTION

TRACTORS - COMBINE - FARM EQUIPMENT - TRUCKS

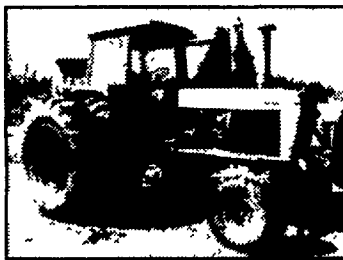
MONDAY, MAY 13, 2002 9:30 AM

Mechanicsville, MD

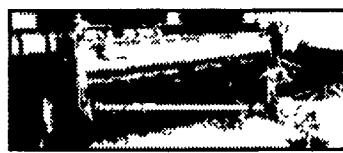


LOCATED: 17 Miles East of Waldorf, Md on Rt. 5 - Auction On West Side of Divided Highway On Corner of Old Flora Rd. & Rt. 5 - Watch for Signs.

TRACTORS & COMBINE: J.D. 9400 Combine w/1143 Threshing Hrs. - Like New, J.D. 915 Grain Head, J.D. Tractors, 4430 w/Cab, Air, Power Shift, Dual Remote; 3020-D w/N.F., 2030-D w/146 Loader, 1010-G N.F., Allis Chalmers G w/Cult., 15.5x38 Snap-On Duals, 20.8x38 Snap-On Duals, Front Weights.



TILLAGE & PLANTING: J.D. 7000 Conservation 6 Row Planter w/Corn, Bean & Liquid Fertilizer Cups, J.D. 1240 - 4 Row Plateless Planter w/Dry Fertilizer, J.D. 450 Grain Drill 20 Double Disc & Press Wheels - Like New, Int. 251 Planter, 2 Row Tobacco Planter, J.D. 1450 - 6X Semi Mtd. Plow, J.D. 2-3-4 Btm. 3 Pt. Plows, J.D. 1600 Chisel Plow, MF 129 Chisel Plow, Taylorway 3 Tooth Subsoiler, J.D. 900 - 5 Tooth Ripper, 8' Spring Harrow, J.D. 950 Cultimulcher Inside Mtd. Wheels, Cole Planter, 3 Pt. Culti w/Side Dresser, JD 4 Row Culti., John Blue 700 Trailer Sprayer w/Booms, Century Trailer Sprayer w/Booms, Dempster Trailer 560 Bu. Fertilizer Spreader, New Idea Spinner Spreader, Cyclone Seeder.



HAY EQUIPMENT: New Holland 408 Discbine, N.H. 162 Tedder, N.H. 850 Round Baler, N.H. 717 Harvester w/2Row Corn Head & Grass Head, J.D. 216 & Badger Forage Wagons, 3 Gravity Bin Wagons, 2 Flatbed Wagons, Round Bale Grabber, N.H. 524 Blower.

MISC.: New Holland 352 Grinder Mixer w/Corn Sheller Att., N.H. 327 Hyd. PTO Manure Spreader, NECO 51A Grain Cleaner on Cart, J.D. 609 3 Pt. Rotary Mower, PTO Circular Saw, New Idea 323 Corn Picker, J.D. 237 Mtd. Picker w/3020 Mts., Pasture Harrow, Spike Harrow, Super A Plow & Sickle Bar Mower, 20 Ton Hyd. Press; Steam Jenny, Forklift Attach. For Tractors, Cement Mixer, 3 Pt. Scoop, Steel Wheels, Troybilt Tiller, Misc. Lumber, Parts for 300 M.F. Combine, "Home Comfort Cookstove", Plus Other Misc. Items.

GRAIN EQUIPMENT: 2 Grain Bins 2800 Bu. & 4000 Bu. w/Sweeps, 4"-6"-8" Augers For Transports.

TRUCK & TRAILERS: 1984 Int. 1900 Diesel w/16' Grain Body & Hoist - Very Good; Totem-All 20,000 Lb. 3 Axle Trailer, Farm Trucks, 67 Ford 350 Flat Bed, 65 Ford Flat Bed, 74 Ford 3/4 Ton Pick-Up, 64 GM Dump, 64 Chevy C-60 Dump, 77 Chevy Pick-Up, These Farm Trucks Are In Various Conditions.

IRRIGATION: Rainbow Irrigation Pump, Gorman Pump, Hale Pump, Homelite Portable Pump, 1750' of 3" Irrigation Pipe 20' & 30' In Length, 2250' of 4" Irrigation Pipe 20' & 30', 3" & 4" Couplers, 46 Risers, 3000' of 4" PVC Pipe, 440' of 6" PVC Pipe, PVC Couplers.

SELLERS: MRS. SAMUEL B. BURCH, LOUISE B. KRONLUND ESTATE & DENNIS BURCH

Auction Conducted by:
Rentzel's Auction Service
Emigsville, PA 717-764-6412
Blaine N. Rentzel AU 761-L
Dave Conley AU 3269-L

Not Many Small Items - Terms: Cash or Good Check
Full Settlement Auction Day - Financing Can Be
Arranged Through Telmark
Phone: 410-827-5052