

Virginia Livestock Auction Summary

Richmond, Va.
April 23, 2002

Report Supplied By USDA

NORTHERN VIRGINIA LIVESTOCK — Front Royal, Marshall, Rockingham, Shenandoah, and Winchester for the week of Apr. 15-20. All prices per hundred pounds liveweight (CWT.), except where noted. **FEEDER CATTLE:** 1,503 head.

FEEDER STEERS: Med. and Lge. 1: 200-300 lb 94.00; 300-400 lb 85-101.00; 400-500 lb 84.25-102.00; 500-600 lb 81.50-96.50; 600-700 lb 75-93.25 few 61-69.75; 700-800 lb 68.25-75.50; 800-900 lb 58-67.00; 900-1000 lb 61.00. Small 1: 400-500 lb 53-70.50; 500-600 lb 64.00. Med. and Lge. 2: 400-500 lb 82-85.00; 500-600 lb 68.50-90.00; 600-700 lb 57.75-75.00; 700-800 lb 58.25-71.00.

HOLSTEIN STEERS: Med. and Lge. 2: 200-300 lb 72.50-92.50; 300-500 lb 70.25-83.00 few 53.00; 500-700 lb 55-65.10; 700-900 lb 58-58.75; 900-1100 lb 52.35-52.60.

HEIFERS: Med. and Lge. 1: 200-300 200-300 lb 81-84.00 few 101.00; 300-400 lb 78-88.00 few

67-74.00; 400-500 lb 71.50-82.50; 500-600 lb 66-80.00; 600-700 lb 65-71.50; 700-800 lb 64.50-67.00; 800-900 lb 64.00. Small 1: 300-400 lb 50-69.00; 400-500 lb 60-66.00; 500-600 lb 45.00; 600-700 lb 53.55.00. Med. and Lge. 2: 200-300 lb 72-81.00; 300-400 lb 71-82.00 few 61-69.00; 400-500 lb 65-73.50; 500-600 lb 60-74.75; 600-700 lb 59-68.00; 700-800 lb 65.00.

BULLS: Med. and Lge. 1: 200-300 lb 88-97.00; 300-400 lb 81.50-103.00 few 90-107.00; 400-500 lb 80-97.00; 500-600 lb 84-93.25 few 71.50-85.00; 600-700 lb 65-71.00; 700-900 lb 54-69.50. Small 1: 300-400 lb 64.00; 400-500 lb 54-65.00. Med. and Lge. 2: 200-300 lb 73-90.00; 300-400 lb 68-87.00; 400-500 lb 67-89.00; 500-600 lb 65.50-77.00; 600-700 lb 55-68.00; 700-900 lb 44.50-61.00.

SLAUGHTER CATTLE: 295 head. **SLAUGHTER COWS:** 257 head. Breaking Utility and Commercial 2-4, 36-43.50; Cutter and Boning Utility 1-3, 34.50-41.50; Canner and Low Cutter 1-2, 26.50-37.75.

SLAUGHTER BULLS: 38 head. Yield Grade 1-2, 900-1300 lb 40.50-61.00, 1300-1600 lb 49-58.00, 1600 lb and over 48.25-58.25.

BABY CALVES RETURNED TO FARMS: 76 head. Newborn to 4 weeks, 10-112.50 per head; over 100 lbs 65-175.00 per CWT.

SHEEP: 199 head. **SLAUGHTER LAMBS:** 114 head. New Crop: Choice and few Prime 1-2 few 3, 96-113 lb 80-88.25; Good and few Choice 1-2, 78 lb 89.50. Woolled: Choice few Prime 1-2 few 3, 100-110 lbs 80-86.00; Good and few Choice 1-2, 98 lb 85.50, 120 lb 69.00. **FEEDER LAMBS:** 13 head. Med. and Lge. 1-2, 50-60 lbs 107.00; 50 lbs 114.00. **SLAUGHTER EWES & RAMS:** 72 head. **EWES:** Choice 2-4, 27.25-30.00; Utility and Good 1-3, 31-34.50; Cull and Low Utility 1-2, 31-34.00.

Dewart Livestock

Dewart, Pa.

Report Supplied By Auction
Monday, April 22, 2002

STEERS: 55.00-66.25.
HEIFERS: 50.00-64.00.
GOOD COWS: 36.00-42.00.
CANNERS AND CUTTERS: 25.00-36.00.
BULLS: 50.00-56.00.
VEAL: 90-190 LBS. 120.00-650.00; 70-90 LBS. 60.00-120.00.
HOGS: 25.00-29.00.
SOWS: 20.50-22.50.
FEEDER PIGS: 20.00-32.50 HEAD.

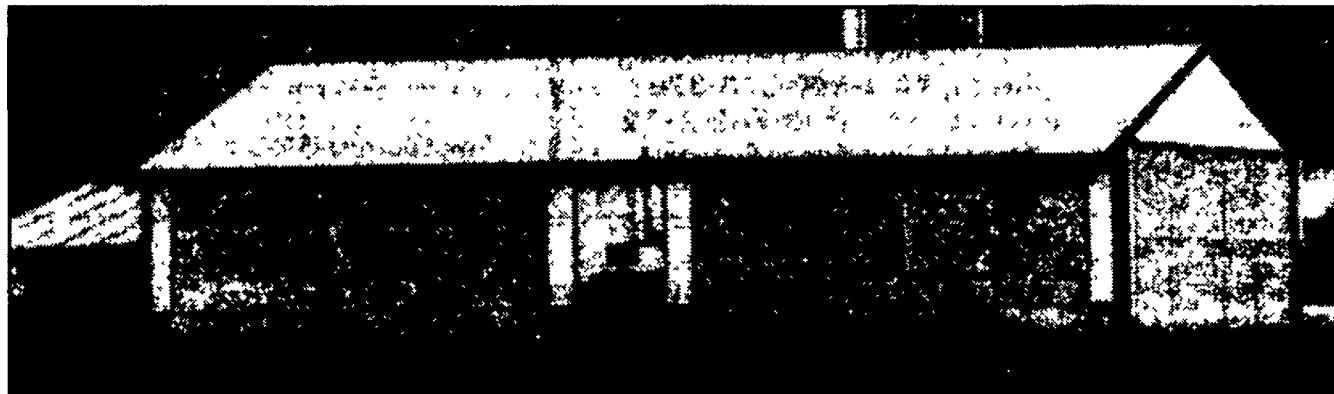
Thanks and Congratulations...



Back row (left to right) Jason, Ray, Linda, Renee
Front row (left to right) Shawn, Tiffany, Regina, Amber

**Halteman Family
Just Completed**

**54" x 84' x 14' Panitek
structure for calf
wet/weaning barn**



Designed and Built by **Triple H Construction, Ephrata, PA**



While Poly ceiling liner creates a bright clean looking interior that offers unobstructed air flow while eliminating potential bird nesting areas.



Long-lasting, high quality galvanized steel structures built for generations of profitable use. Cut construction time and Costs.



717-738-2142 • 800-874-7531

www.TripleHConst.com

430 Springville Road • Ephrata, PA 17522

Custom Builders of Dairy, Storage, & Commercial Buildings



AgChoice Farm Credit

Your first choice for financial services

109 Farm Credit Drive
Chambersburg, PA 17201
www.agchoice.com

Phone: (717) 263-3315
Phone: (800) 554-9055
Fax: (717) 263-1568



**Pasture Perfect® Dealer of the Week:
R. Dale Groff**

This week Ampac Seed Company and Rohrer Seeds recognize R. Dale Groff of Dalmatia, PA. Dale and his wife Kim farm about 225 acres and manage a 70 cow dairy. Dale has been a dealer for Rohrer Seeds for two years and is very pleased with the quality of seed that Rohrer's offers. Dale and Kim also market alfalfa hay. Dale recommends both the Triple Purpose and General Purpose Pasture Perfect® mixes for the Dalmatia area.



R. Dale Groff

Pasture Perfect® Triple Purpose Mix is an excellent mix for hay, silage and management intensive grazing. This mix will hold up to drier weather very well.

**Pasture Perfect®
Triple Purpose Mix**

- 25% Tadena Orchardgrass
- 25% Eastwood Orchardgrass
- 25% Tuukka Timothy
- 10% Tonga Perennial Ryegrass
- 10% Wintercrown Alfalfa
- 5% Jumbo Ladino Clover

Pasture Perfect® General Purpose Mix is an all grass mix with high palatability - great for dry cow pastures or hay. It is also an excellent mix to plant into areas with broadleaf weed problems. Use a broadleaf weed program after grasses are established. After weeds are controlled (and sufficient time elapsed after herbicide application) add a clover of choice.

**Pasture Perfect®
General Purpose Mix**

- 30% Tonga Perennial Ryegrass
- 25% Duo Festulolium
- 18% Tadena Orchardgrass
- 17% Eastwood Orchardgrass
- 10% Kentucky Bluegrass

Contact:

R. Dale Groff
570-758-2136



For product details and local purchase info, please visit us on the web at

www.pastureperfect.com

or call

Rohrer Seeds
717-299-2571

Pasture Perfect is a registered trademark of



"Integrity & Excellence. Our Foundation. Your Guarantee!"