


Lancaster Farming *Antiques Center*

THE ANTIQUE DETECTIVE
Anne Gilbert



Old Or New Hat Boxes Novel Collectibles
Museums call them "portable graphic art." At dealer prices of \$800 and up for 19th century hat boxes, collectors call them "expensive." Probably the good news is that hat boxes dating from 1900 to the 1960s are still around, reasonably priced, and collectible. While 19th century hat boxes with a few stains and tears are acceptable, 20th century examples should be in near mint condition.

It is amazing that so many 19th century hat boxes have survived since they were made of pasteboard or of thin, bent wood, covered with wallpaper. Probably one reason is that they were saved, often along with their "bonnets," after they were long out of fashion, because they represented something special. And, the designs were so appealing. Another reason for their high rate of survival is that most were stored in dry attics, in protective wrappings or wood chests.

For the traveling woman of the 1800s, hatboxes were important items. When used by men, in the 17th and 18th century, to protect their linen neckbands, they were known as handboxes. They were round or oval-shaped.

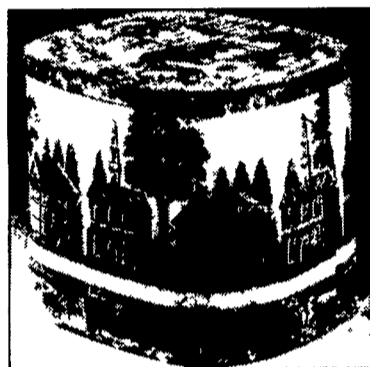
When new methods of travel began in America, with the opening of the Erie Canal in 1825, the handbox became a hat box for traveling women. It was enlarged

to accommodate hat sizes. By the 1830s and 1940s, when the growing industrial markets were hiring female workers, women traveled to mill towns in different areas. They carried their best bonnets in fancy hat boxes...by wagon trains and stagecoaches.

An early female entrepreneur, Hannah Davis opened a hat box factory. The boxes were decorated pasteboard and sold for 25-50 cents apiece.

CLUES: Several years ago 19th century hat boxes were reproduced to tie in with a museum exhibit. They were sold in museum gift shops. Be sure the hat boxes you see in antique shops and at shows have some signs of wear.

Look for hat boxes lined in
(Turn to Page B31)



Wallpaper covered hat box, c.1830-40. Photo credit: Sotheby's, New York City.

PUBLIC SALE
OF ANTIQUES; PERSONAL PROPERTY AND TOOLS
MON., APRIL 15, 2002

Sale at 2:30 P.M.

To be held in the Reinholds Fire Co Banquet Hall, Rt 897, Reinholds

Drop Leaf Table; 6 Decorated Arrow Back Chairs, Washstand, Blanket Chest; 4 Pc. Bedroom Suite, Curio Cabinet; Hutch; 3 Corner Table, Clothes Tree, High Chair; Chest of Drawers; Desk; Agate Top Table, End Tables; Rocker; Sofa; Recliner, Niagara Vibrating Chair; T.V., Glass Front Cabinet; School Desk, Magic Chef Gas Stove; Microwave; Small Chest Freezer, Wood Stove; Domestic Sewing Machine, Rainbow Sweeper; Benches;

Depression; Berry Set; Carnival, Cake Plate; Wine Set; Compote, Chicken On Nest, Steins, Salts; Hall; Milk White; Crocks; Jugs; Kerosene Light; Chickens; Crayola Tins; Copper Bottom Cookware; Flatware; Mixers Roast Pans, Marbles; Sadiron, Deer Heads; Darby Mint Dolls; Cabbage Patch, Horse Collection; Hess Trucks; Fordson Tractor; Farmall; Min. New Holland Engine; Home Stove; Rotroff Girl Show; Tinker Toys; Hubley Guns; Beatles Figures; Mr. Peanut; Olive Oyle Puppet; Min. Croquet Set, Doll Cradle; Xmas, Hat Collection; Baskets; Door Stop, Iron Kettle and Tripod; Pocket Knife; Sizing Box, 1918 License Plates and Others; Knives; Afghans, Blankets; Small White Mt. Ice Cream Freezer;

MTD Snowblower; Ext. Ladder, Mower; Wheelbarrow; Scaffold; Kegs; Wooden Boxes, J Deere Chain Saw; Bench Grinder; Drill; Socket Set, Concrete Tools; Wrenches; Ice Tong; Jacks, Axes, 2 Man Saw, Tool Box; Draw Knife; Auger; Sled, Wagon, Animal Cage, Ext Cord, Lawn Ornament Patterns, Folding Chairs; J C Higgins Bike and Other Items Not Mentioned

Terms by
MAE Z. WINGENROTH and RAYMOND D. FRY

Art Pannebecker Auction Service

#AU001476L
717-336-6983
B. Habecker #1296-L

PUBLIC AUCTION
ANTIQUES & FARM EQUIPMENT
APRIL 20, 2002
9:00 A.M.

100 CHURCH ST., WINDSOR, NJ
SELLING FOR THE UPDIKE ESTATE:

Oak Sleigh Beds, Oak Ice Box, Oak Round Table Claw Feet, Sideboard, Chairs, Rockers, Child's Desk, Cushion Dining Room Suite, Marble Top Stand, Oak Washstand, Empire Dressers, Oak Dressers, 5 T-Back Chairs, Oak Morris Chair, Plank Bottom Chairs, Old Tables, Clock Mission Oak, Rope Bed, Trunks, Stands, Washer, Dryer, Safe, Desk (Mag), Tea Set, Wicker Baskets, Ceiling Lights, Egg Scales, Irons, Old Tins, Cookie Jars, Fountain Pens, Crocks & Jugs, Oil Lamps, Dolls, Vintage Clothing, Old Radios And More.

FARM EQUIPMENT

1965 Chev. 60 Flatbed Truck, '53 Ford F-700 Stake Truck, '41 Farmall M, '44 Farmall M, '45 Oliver 70, '78 Oldsmobile Royale, 3 Bottom PLOW (3 pt.), IH Corn Planter (4 Row), 3 Flat Wagons, Sickle Mower, Brush Hog, Roller Harrow, Manure Spreader, Lime Spreader, Hay Conditioner, Hay Rack, Corn Elevator, Old Lumber, Horse Harness, Buggy Parts, Chicken Crates, Feeders, Nests, Hammermill, Pitcher Pump, Iron Tubes, Locust Posts, Shovels & Rakes, Corn Sheller, Milk Cans.

DIRECTIONS:

From 195 and Rt. 130 follow 130 North till you see a sign reading Windsor/Edinberg Rd., sign will say Church St. Windsor, make left turn, follow 3/4 mile to farm on left side. Terms - Cash - Checks - Rain- Shine.

10% BUYERS PREMIUM

ALLEN NIXON - AUCTIONEER
NIXON AND NIXON AUCTION SERVICE
PEMBERTON, NJ
609-859-2151 www.nixonandnixon.com

Martin's 31st Annual Spring Auction of Carriages, Sleighs & Antiques

FRIDAY, MAY 3 & SATURDAY, MAY 4, 2002

Start 9:00 A.M. Each Day

LEBANON FAIRGROUNDS • LEBANON, PENNSYLVANIA

TENTATIVE AUCTION SCHEDULE

FRIDAY, MAY 3 - 9:00 AM Approx 200 CATALOGUED horse drawn coaches, carriages and sleighs. Commercial wagons & sleighs, marathon & competition vehicles, coachmen driven coaches, pleasure driving 2 and 4-wheel carriages, several farm wagons, approx 30 sleighs in various styles and all conditions. 3 Roof Seat Breaks, Stanhope Phaeton; Hunting Break, Hitch Wagons, to name a few of the wide variety of pony, miniature horse, cob, horse & draft sizes.
3:00 PM (SECOND AUCTION RING) CATALOGUED Equine & carriage books, framed prints & pictures, china and glassware

APPOINTMENTS (Immediately following the catalogued carriages) Over 400 lots of harness, some made by Freedmans, Smuckers & others, carriage lamps, holly whips, rosettes, saddles (English, western & side saddles), many good quality appointments

SATURDAY, MAY 4 - 9:00 AM FIELD & TENT SESSIONS
9:00 AM - SECTION ONE & CARRIAGE TENT Over 200 horse drawn coaches, carriages, sleighs & wagons. Surreys, Top Buggys, Farm & Commercial Wagons, 2 & 4-wheel Pleasure Driving Carriages, Vis-A-Vis, selection of sleighs. Running gears, etc

HUGE FIELD SESSION with 6-7 auctioneers selling simultaneously all day, Saturday, May 4, starting at 9:00 A.M. Three different areas starting at 9:00 A.M. Please check out the tentative auction schedule. We expect over 200 horse drawn vehicles and numerous lots of all types of interesting and good quality useable horse related and non-horse related equipment and collectibles.

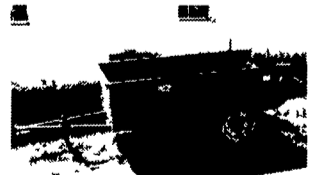
9:00 AM - SECTION TWO (IN THE ROWS) Non-horse related items including primitive & carpenter tools, advertising memorabilia, too many items to mention
9:00 A.M. - REGULAR TENT SESSION Tack, horse & pony blankets, carriage lamps, miniature wagons, harness and other horse related items
9:30 A.M. - SPECIAL TENT SESSION Overflow of catalogued appointments & other good quality appointments received too late to include in catalog session.
11:00 A.M. - SADDLE TENT. English and western saddles followed with WESTERN MEMORABILIA including western bits, spurs and so on
12:00 NOON - ROWS OF HORSE RELATED ITEMS: Carriage & wagon parts, horse drawn farm equipment, wagon wheels, spring seats, black smith tools, shafts, poles and many other items
1:00 P.M. - TRUCKS, TRAILERS, HORSES & PONIES (Approx 8-10 Grade & Registered Ponies & Horses)
1:30 P.M. - HARNESS TENT Harness Session including pony, cab, horse & draft sizes, single, pair, 4-in-hand & more (new & used)
PLEASE NOTE Field items accepted until the start of the auction on Saturday morning. **NO JUNK PLEASE!**

RECEIVING TIMES - WEEK OF AUCTION

Tuesday, April 30 - 12:30 PM - 6:00 PM, FIELD GATE WILL OPEN AT 12:30 PM
Wednesday, May 1 - 9:00 AM - 6:00 PM
Thursday, May 2 - 9:00 AM - 6:00 PM
Friday, May 3 - 8:00 AM - 6:00 PM (FIELD ITEMS ONLY)
Saturday, May 4 - 8:00 AM until start of auction



8 Arenaworks, Stall Fronts
Selling Saturday in Field Sessions



1 Millcreek Spreader w/Small Engine
2 Millcreek #50 Spreader



Milk Delivery Sleigh



Friday - Appointments Session
Portable Harness Rack



Amish Carriage



Life Size Fiberglass Horses & Cows
(Friday Appointment Session)

For more information regarding this auction or an auction of your own contact Paul Z. Martin, Jr or Shirley Morgan at (717) 354-6671. Absolutely No Private Sales On Auction Grounds!

TERMS & CONDITIONS: CASH, TRAVELERS CHECK, CERTIFIED CHECK, MONEY ORDERS, U.S. FUNDS ONLY. Personal or business checks accepted only with a current bank letter of guaranteed payment, made payable to Martin Auctioneers, Inc.



Martin Auctioneers, Inc.
Paul Z. Martin, Jr. President Auctioneer
Roger Spencer - Auctioneer
Patrick Morgan - Auctioneer

Martin Auctioneers, Inc.
12 North Railroad Avenue • P.O. Box 99 • New Holland, PA 17557
Phone: (717) 354-6671 • Fax: (717) 354-8248
PA-AY-000144L • CA-879 PA-AU-0001863L • NC Lic #4626
Auction Site Phone 717-228-2828 Week of sale only!