

Public Auction Register

Closing Date Monday 5:00 P.M.
of each week's publication

Internet Sale Register will be updated
by Friday at 12 Noon

ATTENTION AUCTIONEERS

All sales register info needs complete address,
street, town, county & state.

SAT APR 13 6PM NY Spring
National Sale Syracuse NY The
Cattle Exchange

SAT APR 13 11AM, SUN
APR 14 1PM MON APR 15
5:30PM TUES APR 16 5:30PM
Leesport Farmers Market
Leesport Pa Annual Garage
Door Auction Shoff Door Co
Jack Goodbar 003575 R

SUN APR 14 2PM Real Estate
Canada Rd Covington Tioga
Co Pa Mr & Mrs Dan
L. amoureux owners Randy Jelliff
Auct Service

MON APR 15 11AM 107 acre
farm Bethel Pa Berks Co
Zoned Ind/Comm 717 933 5736
Dwight Miller auct AU-2414 L

MON APR 15 9AM Case trac-
tors antique farm equip 6280
Old Carlisle Rd Dover York Co
Pa Robert Helm Estate
Rentzels Auct Service AU761L
717 764 6412 AU3269L

MON APR 15 11:00AM Doug
Michel Farm Machinery Auction
9329 York Road LeRoy NY
(Genesee Co.) Wm Kent Aucts
(585) 343 5449

MON APR 15 12PM At Murry
Auction Emporium 23 N Water
St Litzitz Pa Elmer Murry Auct
AU648L 717-626 2636

MON, APR 15 - 2:30PM
Antiques, personal prop Rein-
holds Fire Co Banquet Hall, Rt
897 Reinholds Art Pannebecker
Auction Service

MON APR 15 3PM Public sale
at Glades Auction 3409 Druck
Valley Rd York Pa Glades
Auct Co #AY000089L 1717 757-
3532

TUES APR 16 - 8AM Special
Fed Cattle Sales Earlybird pens
close at 2PM Exit 44 off I-81 turn
south then left onto Alexander
Spring Rd 717-249-4511

TUES APR 16 - 10AM Kenruth
Farm cattle & farm machinery dis-
persal between Mansfield &
Wellsboro Pa on Hills Creek
State Rd 1 mi SW of Hills Creek
State Park Kenneth & Ruth
Powlison owners Shaylor Aucts

TUES APR 16 - 10AM Buffalo
Valley Produce Inc Mifflinburg,
Pa bedding plant flowers and
shrubs Neil Courtney Manager
570-966 1151

TUES APR 16 2 PM Fauquier
Livestock Exchange Marshall VA
20116

TUES APR 16 5 15 PM Tractor
wrecker truck, mowers, ATV
trailers at 909 Nixon Dr
Mechanicsburg Pa Robert Hoff
man owner Chuck Bricker Auct
AU 094L 766-5785

TUES APR 16 7:30 PM Dairy

Complex at Fraley's Complex
Muncy, Pa Fraley Auct 570-546-
6907 RY71L

TUES APR 16 - 7:30 PM Feeder
Cattle Sale Carlisle Livestock
Market Inc Exit 44 off I-81 turn
south then left onto Alexander
Spring Rd 717 249-4511

WED APR 17 - 9AM Machinery
Auction, tractors, combines and
heads tillage and forage pieces
Mowrey Auction Co
#044000247, #041000416

WED APR 17 - 10AM JD 2240
Tractor produce equip personal
property, utility sheds 1114 Lanc
Ave By Mervin & Alice M Zimmer-
man Kline, Kreider & Good
Aucts #2116 #499 #4333 717
445-4309

WED APR 17 - 10AM Bartron
JD Dealer Inventory Liquidation
Route 6, Tunkhannock PA Trac-
tors Farm Machinery Roy
Teitsworth Inc 585-243-1563

WED APR 17 - 2:30PM Furni-
ture Collectibles Dolls Toys
Trains Glassware, Plates, Weav-
ing Items, Tools, HH Goods at
Tylersport Fire House Rt 563
Tylersport Mont Co PA Ralph
D Freed Aucts AU000294-L

WED APR 17 - 7 15PM Dairy
Cattle Consignment Sale Four
States Livestock Sales, Hager-
stown Md 301-733-8120

WED APR 17 & THURS APR
18 - Marion Auction Service
5174 Horst Road Chambers-
burg, Pa 717-375-4700

WED APR 17-4PM & THURS
APR 18 9AM Antiques Col-
lectibles Royal Doulton, Autos &
Furnishings at Alderfer Auct Ctr
501 Fairgrounds Rd Hatfield
PA AU-001117-L

THURS APR 18 - 9:30AM Com-
plete liquidation Calstar division
of Hertz Tractors, implements &
Construction Equip Fresno,
Calif Alex Lyon & Son Auct 315-
633-2944

THURS APR 18 - 9:30AM
Danella Companies Inc 14th
Annual Auction, 1402 Con-
shohocken Rd, Norristown, PA
J J Kane Aucts 856-764-7163

THURS APR 18 - 10AM Farm
equip auction in Mifflin Co at
1285 N River Rd, Granville, Pa
Breneman Bros Bryan D Imes
Auct AU-001656-L 717-527-
2449

REMINDER MONTHLY TWO DAY SALE OF FARM EQUIPMENT

at our place of business located 6 miles south of
Chambersburg, PA. 1 mi. E of Marion,
just E. off I-81 at Marion
Exit 10 (Old Exit 4) along Rt. 914

WED., APRIL 17, 2002 • 8:30 AM
Lawn & Garden Tractors,
Misc. Items

THURS., APRIL 18, 2002 • 8:30 AM
FARM EQUIPMENT & TRACTORS
Selling For Bert Blythe From VA
At Appr. 1:00 P.M.

JD 4555 Cab, JD 4250 Cab 4x4; JD 4440 4 post, JD
4620 Cab, JD 2030, IH 5088 4 post; IH 1486 4 post, IH
986 4 post; IH 966 4 post, IH 706, 1998 MF 4270 4x4
1000 hrs, MF 3650 Cab, MF 3545 Cab;
MF 285, AC D-17

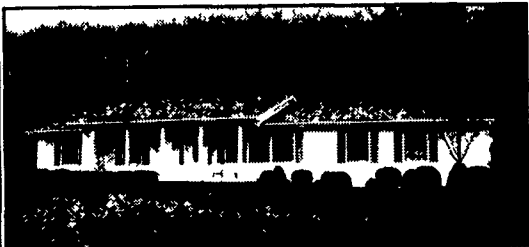
New 3 pt equipment sold daily.
We accept consignments daily.
M-F 8-5 Sat. 8-1 Closed Sunday

Next Sale May 15, 16 - Closed May 27
MARION AUCTION SERVICE

Jerrold L. Jr. & Gloria Oaks
5174 Horst Rd., Chambersburg, PA
717-375-4700 Lic. #AH-89-L

10 ACRES w/HOME AT AUCTION SUNDAY, JUNE 23, 2002 Contents 12:30 P.M. Real Estate 2:00 P.M.

Located at 3581 Warriors Mark Path,
Warriors Mark, PA. (Huntingdon County)
(Spring Mount). 2-1/2 miles North of Warriors
Mark, PA along Rt. 350 at top of mountain.
Watch for auction sign.



**BEAUTIFUL 3 BEDROOM RANCH HOME
IN A LOVELY SETTING. SEE PHOTOS AT
www.rgilliganauctions.com.** Home is situated on
10 acres bordering 400 acres of STATE LAND.
Home has 3 bedrooms, kitchen, dining r., living
r., v. nice Sun Room w/Fireplace w/gas logs, &
2 full Baths. Basement is finished w/new
recessed lighting, 200 amp service. Heat is Oil
Hot Water. There is an attached 2 car garage and
there is a detached 2 car garage w/100 amp
service & propane gas heat. Vinyl sided. Lots of
wildlife to enjoy. If you are looking for home in
rural setting, beautifully landscaped, and not
far from State College (PSU) you should see this
home. Call Ron to see or for more Info:
814-237-0189.

TERMS: 10% Down day of auction, balance in
45 days.

Auction By:
JAMES & ESTHER DONOHUE
(Sale Due to Moving)

AUCTIONEERS:
RON J. & RON S. GILLIGAN
#AU339-L & #AU3430-L

Owner or Auctioneer not responsible in case of
accident. All oral info day of auction takes
Precedence over all written ads.

PUBLIC AUCTION CONSTRUCTION EQUIP. - TOOLS - SUPPLIES SATURDAY, APRIL 27, 2002 - 9 AM

LOCATION: "KRALLTOWN", RD #1, East Berlin, Washington Twp.,
York Co., Pa. From East Berlin sq. take Rt. 194 North approx. 5 mi. or from
Dillsburg take Rt. 194 South approx. 5 mi. to Creek Rd. (Bermudian Valley
Airport sign). Turn onto Creek Rd. & go 3 mi.

Due to downsizing construction business will offer the following at auction.
1992 CAT 963 HI-LIFT, 9344 hrs.; 1999 JCB 214-Series 3 backhoe, 4x4
extend-a-hoe, plumb by hyd., 1874 hrs.; 1999 JLG 2032 scissor lift; JLG
1932E scissor lift; Cat towmotor, 9000 lb. lift capacity; IN #7000 forklift
w/28" mast; 2000 NH 190 LX skidloader, deluxe cab, 2 sped.; bucket; pallet
forks; 1992 Chevy Scottsdale w/utility bed; 1991 Ford F-350 4x4 dually dsl.
w/new Reading utility bed; 1988 Ford F-250 van; 1988 Ford F-250 w/utility
bed; 1982 Ford van, 15' box & power taigate; 1981 IN 2600 10 wheeler, 15'
dump, DT466 central hyd. w/pow; IH 1800 single axle dump, DT466B, cen-
tral hyd. w/pow; 1979 DM Mack 10 wheeler w/14' dump; 1974 Chevy C-
65, single axle dump; Lincoln/Electric Ranger 9 port. welder w/Onan 18 HP
engine; Miller (Bobcat) port. welder w/cart & toolbox; (2) Makita G6100R
generators; Makita G3510R generators; 40' Morrison super sewer; (3)
Partner K950 14" gas powered chop saws; Mig Morison (ESAB) 250 welder;
Koleman power mate 60 gal. 100-130 psi air compressor; Stow 2 bag con-
crete mixer; ESAB PCM875 plasma cutter; WMC metal horizontal band saw
w/phase convertor; Ellis horizontal bandsaw; Bartell 48" power trial
w/Honda 11 HP motor; Makita (gas) 14" chop saw; Rigid 300 power thread-
er; Rigid 535 pipe threader; (2) Rigid pipe stands; Miller spot welder;
Karcher hot/cold pressure washer; Cam spray hot/cold pressure washer, 2300
psi; Studi (gas) 14" floor saw; Mikasa (gas) tamper; Stow tamper;
Milwaukee porta band; 8' & 10' alum. brakes; 12' highway screed; 24' alum.
pole jacks; fiberglass & wooden ext. ladders; 6" concrete forms; curb forms;
door buck-up braces; Johnson concrete clamps; bull float; 7" micro saw;
power sweeper; alum. 125 gal. tank w/pump; lifting straps; Torpedo 150,000
btu heaters; Duron performance 390 paint sprayer; multi-tons & skates; scaf-
olding; water pumps; DeWalt (elect.) chop saw; shop vacuum; Century bat-
tery charger; B&D rotary hammer drill; various lighting fixtures; Tru-
Temper wheelbarrows; power carpet stretcher; B&D 1/2" drill press; comea-
longs, screw & R&R jacks; (4) port. welding benches; various long handle
tools, elect. tools & more.

TERMS: CASH or GOOD CHECK with sufficient funds. Any statements
made auction day supercede all printed material. Not responsible for acci-
dents.

AUCTIONEER MIKE STERMER LIC #2959L
STERMER'S AUCTION SERVICE
6264 Big Mount Rd
East Berlin, Pa 17316
PH (717) 292-2245

OWNER:
BYRON S. WAGGONER
10 Bentz Mill Rd.
"Village of Kralltown"
East Berlin, Pa.

PUBLIC AUCTION SATURDAY, APRIL 20, 2002 PERSONAL PROPERTY AT 9:00 A.M.

LOCATION: 260 Oaklyn Road, East Fallowfield, Coatesville, PA. From
Business Rt. 30 take Caln Road, cross over West Chester Road to 2nd road.
Left on Oaklyn Road. Follow to Sale on left, or from Strasburg Road at
Mortonville take Caln Road 1.8 miles to Oaklyn Road. Sale on left - watch
for signs.

1987 21' Toyota Granville Self-Contained Camper, 36,000 miles (like
new). Case Vac-14 Tractor w/wide front end, 3 point hitch (running
order).

ANTIQUES, FARM ITEMS, GUNS & TOOLS

FURNITURE - Early Table w/Heavily Carved Large Legs (as is), Dep.
Wardrobes, Porcelain Top Wooden Kitchen Base Cab., Cane Seat & Back
Rocker, 2-Drawer Mahog. Lamp Tables, Video Cab., Stacking Metal Glass
Door File Cab. & Others, Key Wind Steeple Style Clock (Hand crafted by
R.B. Chambers, July 1978), Ebonite Pool Table w/Slate Top & Access., Ping
Pong & Pokers Tables, T-Back Rocker, Warm Morning Airtight Wood Stove,
Metal Swing w/Canopy Top, Linens, Baskets, Stuffed Animals, Old Sleds,
Doll Baby Coach, Children's Books, Christmas Dec., Croquet Set, Sm.
Collection Metal Soldiers, 2 Mattel Fanner 50 Cap Guns w/Holsters,
Records Inc. Beatles, 64cm Hohner Germany 3 Auto. Valve Harp, Goliath
Harmonica in Orig. Boxes, HO Track & Access, Small N Gage Train, Stella
Guitar, Sears Video Camera Complete w/Tripod, Pictures, Recurved Bow
(Damon Hewett), Costume Jewelry, Ladies Watches, Rosary Necklaces and
Other Pieces

GLASSWARE - Fenton, 25th Anniv. Pcs., Clear Glass, Art Glass, Lee-Ray
Pastel Set Dishes, Large Collec. Pigs Inc. Celluloid Pig Bank, S&P Canister
Set & Other Pcs., Collec. Birds, Quezal Style Lamps, Lots of Other
Glassware To Be Unpacked.

COINS - Rolls Wheat Pennies & Uncir. Coins, Foreign Coins, 1981 Proof
Sets, 68, 78, 79, 83 Mint Sets, 1980 US Mint Uncir. Sets, Barr Dollars.

GUNS - Savage Mod. 99F 300 Savage w/3-9 Scope, Marlin Mod. 8122 Bolt
Action, J.C. Higgins Mod. 583 .20 12 gag. Bolt Action, New Haven
Mossburg Mod. 600 CT 20 Gag. Pump, Sears Mod. 43 22 Bolt Action
w/Scope, High Standard Mod. w. 100 22 Cal. 9 Shot Revolver.

TOOLS - Atlas 5 hp Shredder/Bagger, Scott Seeder, Hand and Garden
Tools, Lawn Roller and Sweeper, Anvil, Season Rear Tine Tiller, Jack
Stands, Champion Spark Plug Cleaner, Small Air Compressor, 1-ton Chain
Hoist, Nail Kegs, 12' Ouachita Alum. Boat, 3 pt. Hitch Sicklebar Mower,
Clay Pigeon Thrower, Fishing Poles, 2-Wheel Cart/Ball Hitch, Gang Mower,
North Star Garden Sprayer, Ariens 18 hp Hydro Lawn Tractor w/5' Deck,
Bolens 14 hp Riding Mower w/42" Mower Deck, 3 pt Hitch Hand-Made Log
Splitter (Heavily Built), Schumacher Battery & Starter Booster Charger,
Sears Battery Charger w/Booster, Greenhouse Supplies, Alum. Ladder,
Stainless Steel Sink, Spring Tooth Harrow, Small Ferguson Disc 3 pt. Hitch,
Homelite AP 220 gasoline Engine Water Pump, Elec. Shakespeare Boat
Motor, Bumper Jack, Lots of Hardware, Black Plastic Mulch Layer. Many
other items too numerous to mention.

Terms: Cash Or Approved Check
No out of state checks

SALE BY:
STEVE EAGLES

Auctioneers: Kenneth Griest - AU - 003929-L
(610) 857-2149 or (610) 857-5290
John Stoltzfus - AU - 001728-L

Food Available Not Responsible for Accidents
Announcements day of auction take precedence
over previous advertising

Clip & Save

PUBLIC AUCTION VALUABLE REAL ESTATE 2 SEPARATE PROPERTIES TO BE SOLD #1 - 10.8 ACRE FARMETTE #2 - 13 ACRE WOODLAND TRACT FRIDAY, MAY 10 4 P.M.

LOCATION: 942 Buck Rd., Quarryville Take Rt 272 S of
Lancaster to Buck. Turn left on Rt 372 (Buck Rd) to property
driveway on left (at Penn Dot parking lot)

#1 Real Estate consists of 10.8 ACRES farmette. 1-1/2 sty
masonry & frame house 1,300 sq ft finished area & approx
700 sq ft unfinished 2nd floor bdrm area Kitchen, living &
family rm full bath laundry & 2 bdrms on 1st floor & 2
large 2nd floor unfinished bdrms. Oil forced air heat Bank
barn 30 x 34 w/2 horse stalls. All on 10.8 ACRES w/stream
Mostly cleared land, some woodland Included is lot rental to
Penn Dot on frontage along Buck Rd Zoned AG

#2 Real Estate consists of 13 ACRES woodland w/pond &
right of way access from Rt 372. This tract joins tract #1 &
others seclusion & privacy Zoned rural NOTE: Both tracts
sold separately on tract #1 site Property is very private and
secluded yet only minutes from major highways. Inspection
by appt. or Open House Sat., April 20 27 & May 4 from 1 to
4 PM For picture brochure, land plotting, or financing call
Auctioneers 717 733-1006

DOROTHY M. O'DONNELL
717-786-7212

Randal V. Kline, Roy E. Good, Jr.,
Keith Snyder, Auctioneers
(717) 733-1006
Lic. #344L - #2116L - #3433



PUBLIC AUCTION THURS., MAY 2, 2002 TIME-4PM

Located in Perry Co., Rye Twp, 75 Pine Hill Rd,
Marysville From Shermans Dale (TK Rest-
aurant) Take Rt. 850 east approx 3 miles to Pine
Hill Rd on left Go 2/10 mi to auction on right.
From Marysville, take Rt.850 west approx 9-10
miles to Pine Hill Rd on right.

REAL ESTATE (6pm)

Situated on 3 25 ac is a 2BR framed house w/LR,
eat-in kitchen, bath, enclosed sun porch & partial
basement. A detached work shop, pavilion, maca-
dam driveway & small stream accent the natural
beauty of this retreat. Within walking distance of
State Game Lands Open house dates-Sun,
April 7 & 14, 1-4 pm. Terms of real estate-10%
down the day of auction, the balance due at set-
tlement Offered w/reserve.

Auctioneer notes - Mrs Luckenbaugh has most-
ly modern & very nice furniture & merchan-
dise to be offered at this auction. Please visit
www.fahnestocksauktion.com for photos.

GRACE LUCKENBAUGH
OWNER

Nevin AU 2553-L
FAHNESSTOCK'S
Auction Service 717-582-8565
www.fahnestocksauktion.com