

**National Carlot Meat Report**

Des Moines, IA  
April 9, 2002

Report Supplied By USDA

USDA Market News USDA Carlot Meat 4:00 Summary: Compared to Previous Day, Prices in Dollars per hundred-weight, Equated to FOB Omaha Basis.

**BOXED BEEF CUTS:** Boxed beef cutout values firm on light to moderate demand and offerings. Select rib, chuck, round and loin cuts generally steady, while Choice cuts firm. Beef trimmings firm on moderate demand and light to moderate offerings.

Estimated composite cutout value of Choice 1-3, 600-750 lbs carcasses up .77 at 118.85, 750-900 lbs up .87 at 118.31; Select 1-3, 600-750 lbs up .24 at 115.13, 750-900 lbs up .24 at 114.32; based on 144.56 loads of Choice cuts, 94.70 loads of Select cuts, 47.83 loads of trimmings, and 65.43 loads of coarse ground trimmings.

Estimated carcass price equivalent value of Choice 1-3, 600-750 lbs up .33 at 111.84, 750-900 lbs up .40 at 111.44; Select 1-3, 600-750 lbs up .06 at 107.56, 750-900 lbs up .07 at 107.04. Current index reflects the equivalent of 321,457 head of cattle.

National Carlot Beef: The Cutter cow carcass gross cutout value was estimated at 95.15, down 1.97.

By-Product Drop Value: Hide and offal from a typical slaughter steer was estimated at 7.24, unchanged.

National Carlot Pork: Sales reported on 78.0 loads of pork cuts and 33.0 loads of trim/process pork. Compared to Monday's close: Fresh bone-in loins 2.00-5.00 lower; boston butts steady to 5.00 lower; skinned hams 1.00-2.00 lower; seedless bellies 1.00-3.00 lower; lean trimming 1.00-3.00 lower. Trading slow to moderate, with light to moderate demand and mostly moderate offerings.

Calculations for a 185 lb Pork Carcass 51-52% lean 0.80" -0.99" back fat at last rib 50.58, down 1.24. Loins bone in fresh 1/4 inch trim 21 lb/ down/light 91.00-96.00. Hams bone in trimmed, 17-20 lbs trim spec 1 40.00; 20-23 lbs trim spec 1 34.00-35.50. Seedless bellies 12-14 lbs 62.00; 14-16 lbs 63.00-65.00; 16-18 lbs 61.00.

**Eastern Cornbelt Direct Sheep Weekly Summary**

Springfield, Ill.  
April 5, 2002

Report Supplied By USDA

Eastern Cornbelt Direct Sheep Weekly Report (includes lambs sold in IL., IN., OH., MI.) — Compared to last week, slaughter lambs over 100 lbs were 2.00-5.00 higher, with the baby lamb trade over for now. Slaughter ewes were 3.00 lower. Demand for lambs was light to moderate for a light post-Easter run. Carcass lamb prices were very uneven, with middle weights 45-75 lbs lower, down .11-3.00, with 40-45 lbs and 75-85 lbs up 2.00. Confirmed sales this week about 55% lambs and 45% slaughter ewes, with an additional 525 head of goats. Total sheep and lambs sales: 850 Last week: 1575 Last year: 2800.

**SLAUGHTER LAMBS:** Choice Shorn 2-3 110-130 lbs 60.00-65.00; Woolled 57.00-60.00.

**SLAUGHTER EWES:** Utility to Good 25.00-32.00, Cull to Utility 22.00-25.00.

**SLAUGHTER GOATS (cwt.):** Kids: Selection 2: 20-40 lbs 105.00-107.00; 40-60 lbs 90-1.00 Selection 3: 20-60 lbs 58.50-62.50 Nannies and Billies: 100-150 lbs 40.00-55.00.

This report covers sheep and lambs sold direct off the farm through local country stations. Note: receipts do not cover total movement in the area.

**Eastern Cornbelt Direct Feeder Cattle Weekly**

Springfield, Ill.  
April 5, 2002

Report Supplied By USDA

Eastern Cornbelt Direct Feeder Cattle Summary for Illinois, Indiana, Michigan, and Ohio: Feeder steers were unevenly steady and heifers were weak to 1.50 lower. Trading activity was moderate and demand was moderate. Receipts this week: 58% beef type steers, 0% Holstein steers and 42% heifers. Confirmed sales 1500 this week, 1000 a week ago, and 1100 a year ago.

**FEEDER STEERS:** Medium and Large Frame 1-2: 575-625 lbs 95.00-99.00;

700-800 lbs 80.00-84.00, few 78.50; 800-900 lbs 78.00-80.00. Holstein Steers Large Frame 3: no test

**FEEDER HEIFERS:** Medium and Large Frame 1-2: load lot 413 lbs 104.50; load lot 508 lbs 94.50; 525-600 lbs 83.00-86.50; 675-725 lbs 80.00-81.50.

Prices are based FOB the farm unless otherwise indicated. Delivered prices include freight, commissions, and other expenses.

**West Virginia Feeder Cattle**

Charleston, W. Va.  
April 9, 2002

Report Supplied By USDA

Regular Sales from Weston, Greenbrier Valley, Spencer and Parkersburg, W. Va. from April 6 and 7.

**STEERS:** 434 head. Med. and Lge. 1: 200-300 lb 81-98.00, 300-400 lb 89-103.00, 400-500 lb 84-98.00, 500-600 lb 90-100.00, 600-700 lb 76-88.50, 700-800 lb 67-79.00, 800-900 lb 57-71.00, 900-1000 lb 64.00. Med. and Lge. 2: 200-300 lb 76-82.00, 300-400 lb 85-98.00, 400-500 lb 83-94.00, 500-600 lb 80-93.00, 600-700 lb 74-81.00, 700-800 lb 65-69.00, 900-1000 lb 52-54.00. Small 1 and 2: 200-300 lb 80.00, 300-400 lb 85-93.00, 400-500 lb 80-93.00, 500-600 lb 80-83.00, 600-700 lb 65.00.

**HEIFERS:** 595 head. Med. and Lge. 1: 200-300 lb 80-90.00, 300-400 lb 72-88.50, 400-500 lb 73-87.50, 500-600 lb 72-82.00, 600-700 lb 62-77.50, 700-800 lb 60-73.00, 800-900 lb 54.00. Med. and Lge. 2: 200-300 lb 75-89.00, 300-400 lb 75-84.00, 400-500 lb 70-83.00, 500-600 lb 64-76.00, 600-700 lb 59-65.00, 700-800 lb 52-68.00. Small 1 and 2: 200-300 lb 60-70.50, 300-400 lb 64-78.00, 400-500 lb 65-75.00, 500-600 lb 60-65.00, 600-700 lb 53.50-68.50.

**BULLS:** 189 head. Med. and Lge. 1: 200-300 lb 85-95.00, 300-400 lb 90-107.00, 400-500 lb 82-98.00, 500-600 lb 72-87.00, 600-700 lb 68-79.00, 700-800 lb 56-70.00, 800-1000 lb 44-53.50. Med. and Lge. 2: 300-400 lb 88-92.00, 400-500 lb 78-90.00, 500-600 lb 72-81.00, 600-700 lb 60-62.00. Small 1 and 2: 300-400 lb 84-96.00, 400-500 lb 70-78.00, 500-600 lb 65.00, 600-700 lb 51.00.

**LIVESTOCK FUTURES MARKET**

Chicago Mercantile Exchange  
Wednesday, April 10, 2002

	Choice Steers Today	Choice Feeder Today	Live Hogs Lean Value Today	Frozen Pork Bellies Today
Ap 02	67 425 71 625	74 025 79 000	41 450 47 700	-----
My 02	-----	73 700 78 950	48 725 57 975	66 050 71 025
Jn 02	62 500 66 300	-----	53 875 59 775	-----
Jl 02	-----	-----	53 175 58 350	66 875 71 900
Au 02	62 375 65 825	77 250 82 100	51 500 55 950	66 300 70 500
S 02	-----	77 325 81 950	-----	-----
O 02	65 125 68 550	77 325 81 925	44 850 47 725	-----
N 02	-----	77 500 82 215	-----	-----
D 02	67 350 70 350	-----	43 300 45 600	-----
J 02	-----	77 200 82 300	-----	-----
F 03	68.600 71 550	-----	46 000 47 600	66 000 68 700
Mr 03	69.850 72 700	-----	-----	66 500 68 450

**Tri-State Weekly Feeder Cattle Sale**

Richmond, Va.  
April 8, 2002

Report Supplied By USDA

WEEKLY AUCTION at Tri-State, Apr. 5 — FEEDER CATTLE: 774 head. Prices per hundredweight, based on Out Weights.

**STEERS:** 311 head. Med. and Lge. 1: 200-300 lb 97-103.00; 300-400 lb 99-107.00; 400-500 lb 94-102.00; 500-600 lb 89-97.00; 600-700 lb 80-87.00; 700-800 lb 76-78.00. Small 1: 300-400 lb 80-889.00; 400-500 lb 80-89.00; 500-600 lb 80-86.00; 600-700 lb 74-78.00. Med. and Lge. 2: 300-400 lb 92-100.00; 300-400 lb 92-104.00; 400-500 lb 92-100.00; 500-600 lb 83-86.50; 600-700 lb 78-82.00.

**HOLSTEIN STEERS:** 19 head. Med. and Lge. 2: 300-400 lb 76-81.00; 400-500 lb 68-75.00.

**HEIFERS:** 287 head. Med. and Lge. 1: 200-300 lb 90-103.00; 300-400 lb 91-98.00; 400-500 lb 80-85.00; 500-600 lb 74.50-83.00; 600-700 lb 70-78.50; 700-800 lb 65-69.00. Small 1: 300-400 lb 81-86.00; 500-600 lb 60-72.00. Med. and Lge. 2: 300-400 lb 86-91.00; 400-500 lb 78-80.00; 500-600 lb 73-80.50.

**BULLS:** 176 head. Med. and Lge. 1: 300-400 lb 100-109.00; 400-500 lb 95-100.00, 500-600 lb 89-96.00; 600-700 lb

74.50-82.50; 700-900 lb 65 76.00. Small 1: 200-300 lb 100-108.00; 300-400 lb 90-94.00; 500-600 lb 80-84.00. Med. and Lge. 2: 300-400 lb 95-101.00; 500-600 lb 83-90.00; 600-700 lb 70.50-75.00.

**National Weekly Lamb Report**

Des Moines, Iowa  
April 8, 2002

Report Supplied By USDA

National Weekly Lamb Report for week ending Monday, April 8.

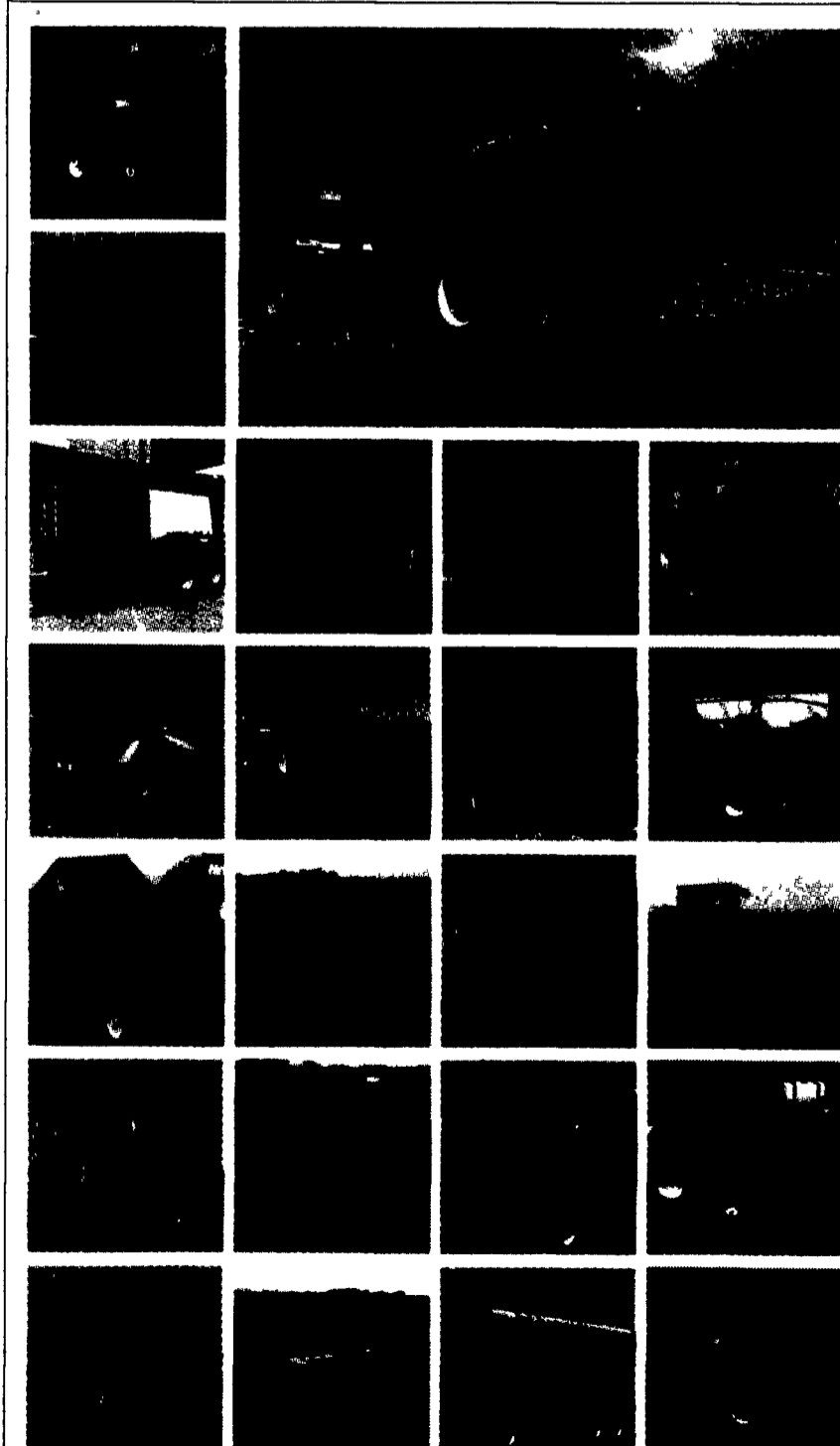
Prior Week Slaughtered Lamb Head Count: Domestic: From Forward Contracts 2,053; From Formula Arrangements 31,414 Imported: From Forward Contracts 0; From Formula Arrangements 1,7647.

Slaughtered Packer Owned Sheep: Domestic: 2,073 head; 57-86 lbs, avg. 79; lbs; dressing percentage range 49 2-50.0%, avg. 49.5; Choice or better 94.3%

Formula Contract Purchases: No trade reported.

Formula Purchases: Domestic: 785 head, 48-63 lbs avg. 59.2 lbs, 125.16-170.00, wtd. avg. price 132.49; 10,673 head, 65-75 lbs avg. 70.5 lbs, 115.28-139.57, wtd. avg. price 130.61; 19,628 head, 75-84 lbs avg. 77.3 lbs, 111.63-131.57, wtd. avg. price 128.04; 1,501 head, 85-96 lbs avg. 86.2 lbs, 111.36-120.30, wtd. avg. price 118.59.

Formula Purchases: Imported: 388 head, 67-69 lbs, avg. 68 lbs, 127.20; 1,764 head, 75-80 lbs, avg. 77.9 lbs, 115.73-128.68, wtd. avg. prices 122.99.



**Complete.**

Complete Line. Complete Value.  
Complete Assurance.

Now, when it comes to hay tools, New Idea is the only name you need to know. That's because our newly expanded line is sized to meet all your hay production demands, from the smallest livestock operation to the largest custom hay harvester. What's more, every New Idea tool delivers the rugged dependability and real value you've come to expect — plus the assurance of a solid dealer network and more than 100 years of proven performance. See your New Idea dealer today. Or call 800-767-3221.

