

MAILBOX MARKET FOR SALE

4' Flail mower, \$350, 4' rototiller, \$400, 51/2' box blade, \$250, 5' rotary mowers, \$150-\$350, 3 pt 2 b plows, \$100-\$250, sickle mower, Lanc Co., 8-8 30 a.m., 717-529-4066

Everything you need to set up a 400 calf veal operation, steal it all for \$10,000, you remove, Indiana Co., 814-743-5959

C80 Case IH tractor w/canopy radio, 500 hrs, new cond, \$19,500, York Co., 717-432-5160

JD 420 crawler, JD 3010 utility gas, JD G30 propane, JD BN, 1950 model, 42" rubber, exc., JD 630 std., Warren Co., 908-995-7242

Bobcat 843 skid loader, needs eng work, \$3,900, wanted radiator for Ford 1310 tractor, Lanc Co., 717-859-2419

Used bulk bags, also super sacks or totes, 3,000 lb capacity, have 70, \$10 each, call Rich, York Co., 800-632-1895

Simplicity 7016H w/48" mower, 46" snowblade & 36" tiller, g.c., will sell separate, call after 6 p.m., York Co., 717-259-1373

Dodge power wagon, body is rough, rebuilt eng, kick start Briggs & Stratton, disk harrow, Farmall H, stuck eng, Montg. Co., 610-278-0180

Farmall H, snowmobile trailer, belly mowers, V4 Wis., V plow, Columbia gas stove, snow plows, blacksmith drill, bill, Mont Co., 610-278-0180

Power feed unit, fits any portable saw mill, elec cable drive, variable speed, \$825, toll free, Dauphin Co., 1-866-221-7715 ext 0370

Thinband saw mill, EZ blade release, elec start, 131/2 HP power feed, 20' heavy duty track, \$5,550, toll free, Dauphin Co., 1-866-221-7715, ext 0370

Ear corn, \$65/ton at farm, you load w/our elevator, Jamesway Stanchions & other makes, \$15 OBO, Warren Co., 908-453-2374

150 y/o frame house to be dismantled & removed, located near Northeast, MD, Cecil Co., 410-287-5277

3 Badger chuck wagons, 2 16', 1 14' w/roofs, shed kept, field ready, AC 3 btm snap coupler plow, \$275, Cecil Co., 410-658-3714

Simplicity 5216 lawn tractor, 50" cut, \$250, JD MT w/26T plow, sickle bar mower, \$2,500, Lanc Co., 717-529-6068

Loader tires, 20 5-25 12/32 tread depth (4), \$45 each, Dauphin Co., 717-564-6871

Gooseneck 25' cornpro trailer, exc cond., \$3,500, Cecil Co., 410-658-3363

Dsl. engs, 465 cu. in, turbo & natural, removed from Army trks, \$600 & up, running, Phila., 215-598-8227

Rodgers 35 ton detach Lowboy, g.c., \$11,000, Perry Co., 717-834-9900

1997 Polaris Explorer 4x4, new pipe bumpers, front & rear shaft drive, extra headlight & speedometer, 315 mi., exc shape, \$5,600 OBO, Perry Co., 717-582-8793

2110 Ford 2WD hole in block, \$1,800, 1989 12T, 22' trailer, elect brakes, tandem axle, dual wheels, \$2,700, Cecil Co., 410-658-6297

8 y/o standardbred, traffic safe & sound, in the lines, ready for miles, Chester Co., 717-442-5062

JD SIXB 145 plow, JD 2 row potato planter, 3 JD 33 vegetable seeders, John Blue soil fumigator, Monmouth Co., 732-946-3921

Belting track wheels, 18"W, 65"H, 351/4" centers, new cond, \$1,800 OBO, Lanc Co., 717-445-7656

NH L425 skid loader, 36 HP Wis motor, 60" bucket & bale spear, 280 hrs, good running cond., \$5,000, Chester Co., 610-696-1387

Maine/Anjou Angus crossbred, cows w/calves at side, several yearling heifers, 1 purebred Angus bull, 1 y/o, Leb Co., 717-949-3701

XL70 Honda motorcycle for young rider, \$500, Balto Co., 410-343-0364

8 feeder cattle, w: 550 to 600, \$ 87/lb OBO, Lanc Co., 717-733-6825

Open center steel wheels, 63"H, 36"C, 16"W w/6"W attachable bands, front wheels, 37"H, 7"W, 6 lug, BO, Lanc Co., 717-355-0715

Street pads for Case backhoe outriggers, new cond, \$275, York Co., 717-235-3353

Allis Chalmers 7040, 4,536 hrs, runs nice, needs trans work, power shift, cab, \$3,550, call between 6-7:30 a.m., Lanc Co., 717-229-0655

Oliver 66, v.g cond, BO, air stuffer 50#, can be used for bologna or sausage SS Juniata Co., 717-527-4196

Parting out mix mill grain hopper, new proportionate w/6 augers & knobs, motors, \$2,000+, new parts, \$1,500 OBO, Wayne Co., 570-253-0159

Flatbed 2 axle trailer, elect brakes, 8 000 GTV, exc cond, garage kept, asking \$1,500 OBO, Lanc Co 717-656-8944

CR80 Honda cycle, \$500 2 metal carts 21/2'x5' 1 w/wheels, \$25 each Lanc Co., 717-687-6321

Woven wire fencing, 3 rolls, 60"H, \$25/roll, 25 used locust posts, \$100 each, Berks Co., 610-856-1833

Mortar mixer, \$350 w/Honda eng, portable brick saw wet cut, \$300, 2 bull floats, \$65 each, 7' scaffold planks, Salem Co., 856-935-6876

Free auto tires, P225-75R15, HR78-14, F-78-14, 1 each, like new, 1 185-70R14, new, never mtd., \$20, Mont Co., 610-287-9731

550 gal Mueller bulk tank, new 1/20 HP, direct drive agitator motor, used 1 yr, exc cond., \$750, Berks Co., 610-894-9798

NI 6221 feeder-house, JD 3 row head, Hesston 5530, NH 848, Vermeer 504G, 504H, JD 335 round balers, Augusta Co., 540-234-0924

IH 1460 combine, 1984, 4x4, 4,000 hrs, 963 corn head, 820 15' flex head, header wagons, \$16,500, Elverson, Berks Co., 610-476-2731

Storage trailers, 28' road worthy w/shelves & pipe racks on door, g.c., \$1,200, Montg Co., 610-754-6569

Cub Cadet 2186 w/grass catcher & cart, 33 hrs, new cond, cost new \$4,927 w/tax, \$3,800, can del Montg Co., 610-754-6569

IH 710 plow 4x16 semi mount v.g cond, 12 transport disc g.c 6' bush hog, g.c Northampton Co 610-767-2217

AC WD 45, runs good, new ft tires, \$1,195, Case 350 dozer, 6 way blade, repair or use for parts, \$1,800 OBO, Fred Co., 301-371-4825

Goats, meat & dairy, 26 kids, bred does, dewormed, shots, starting \$ 8 0

www.neverduell farm pair co m, call a.m., York Co 717-927-6294

Plow 2 btm 3 pth, \$225, corn planter, 1 row, 3 pth, \$325, v.g cond, take both \$500, lve message York Co., 717-308-2305

JD 1050 MFWD 33 HP, PTO, loader backhoe 3 pth ag tires, 1,300 hrs, v.g mechanical cond, \$14,200 OBO, Lehigh Co., 610-298-8492

Patz model 98B silo unloader, exc cond, JD 290, 2 row corn planter w/plates & book, Trioga Co., 570-673-5514

Dump trk 1978 IH, 27,500 GVW, dsl stick, BO will take it, for info rmsquare@fast net, Sch Co., 570-386-4722

IH 1066 cab air heat, recent overhaul, \$13,500, Lanc Co., 717-445-5852

JD 1240 plateless corn planter, \$500, David Bradley corn sheller, \$75, 4"x21" grain auger w/motor, \$125, Lanc Co., 717-626-7162

1987 F250 XLT dsl, 223,000 mi., 1 owner, AT loaded, new ins, brakes, exhaust, tires, runs great, \$4,000 OBO, Bucks Co., 215-766-7347

1997 featherlite stock combo, all alum w/stainless, 2 8x8 stalls, 12' lq 8x29 floor, exc cond, \$34,000, Carroll Co., 410-795-3149

1991 Wilderness Cimron 32' 5th wheel, new appliances, 21' lighted awning, solar panel, basement storage, very clean, \$9,550, Wash Co., 301-842-3721

Ford 9700 tractor, \$8,500, NH 650 belt round baler twine tire, \$7,900, MF 30 tractor loader, backhoe, \$7,900, Wash Co., 301-573-3768

Case 555 haybine, new cutter bar, many new parts, g.c., ready to cut hay, \$700 OBO, Franklin Co., 717-597-9026

More Mail Box Markets Appear On On Page C2

1946 Ford 2N, v.g cond, rear wts toolbox headlights e-brake, bumper good rubber, asking \$2,100 neg, Cumb Co., 717-218-5057

Art Clay Mfg firm & gift shop, equip, formulas, supplies, asking \$200,000 OBO, thousands of items included, Franklin CO., 717-369-4941

3 pt equip 4' rotary mower, \$195, 6' cultivator, \$185, 5th wheel hitch, RBW model UHS-85-7 gross 12000, \$195, Dauphin Co., 717-944-3029

NI 5109 McCormick 9' sickle bar, hay conditioner, MF 224 baler w/212 thrower, McCurdy bin wagons, York Co., 717-244-4168

Brown Swiss heifer, 3 wks old, weighed 110# at birth, no papers! lrg framed, healthy calf, \$300 firm, York Co., 717-428-3124

2250 Int tractor front end load quick hick, price to sell or BO, Harford Co., 410-399-2142

JD 318 lawn & garden tractor, 46" mower, 3 pth, g.c., \$2,750, York Co., 717-235-2059

Sunline travel trailer, 8'W, 28'L, sleep 6, TV, shower, refrigerator-wave stove, above average cond, bargain at \$2,800, Adams Co., 717-677-8063

1 row Saulkville cultivating tractor, \$12,000, Brillion subsoiler, \$1,500, Facebilt & Shurram 5" 40' irrigation pipes, \$40 each, Atlantic Co., 609-476-3903

Hard top for 87-95 Jeep Wrangler, black side door windows included, Sch Co., 570-682-9664

Wis V4, runs, \$150, Economy 21/2E parts, \$200 Fairbanks dishpan, \$300, leader 4 HP, \$600, domestic 11/2, \$2,000 Lackawanna Co., 570-563-2257

Trans jack for autos or medium duty trks, \$125, air impact wrench 1", \$125, Chester Co., 610-495-1021

Brand new picnic tables, color avail, ready in 9 wks or less, Chester Co., 610-932-5274

Adorable pygmy goats, kids, does, \$100, bucks, \$50, mothers on premises, Central NJ, Mercer Co., 609-799-1365

6' refrig deli case, exc cond, \$2,000, 2 compartment walk in cooler, 8x13, g.c., \$1,800 Lanc Co., 717-293-8158

Irrigation pipe, new! 6"x30' high pressure al, ring lock w/gasket & clamp, \$100/length, Salem Co., 856-358-4740

Mobile home 1994 Redman, 14x64, front kitchen, gable roof, 2 bdms, 1 bath, \$4,900 OBO, must be moved, Dauphin Co., 717-599-5085

Farmall Super AV w/hyd, v.g cond, \$2,500 OBO, NI ground driven spreader, needs repair, \$300 OBO, Ford 5-16" plow, \$500 OBO, Salem Co., 856-299-5327

New bricks, all kinds, colors, \$ 25 each, 1998 Chev Dullie p/u bed, white, like new, \$950, York Co 717-428-1197

1948 F600 V8 FH 4+2 spd 12' flat dump power train, dump working when parked inside, \$800, needs restoration Balt, MD, Harford Co., 410-877-7015

Ford F150 1984 straight 6 \$1,300 OBO, Studabaker hitch wagon, \$2 200, Meadowbrook, \$1,150 carriage lamps, \$575 Apollo 250 home gym, Carroll Co., 410-346-6478

Auto sheet metal parts, Jeep CJ5 front end, 79 GM Blazer top & 6 lug wheels 86 Saab turbo eng Lehigh Co., 610-756-6071

Steam boiler, 44H 24W 60 flues 11/4 sight glass high pressure Lanc Co 717 656-7270

JD 21 field cultivator w/harrow attachment hyd fold exc cond, Middlesex Co NJ 609-799-2523

115 ac farm fenced w/zoned electricity 2 ponds, convenient to Interstate 78, \$695 000 call Joe, Monaghan Realtors Berks Co., 610-683-5333

Hard Water?

- No salt No plumber
- Cleans your pipes
- Easy to install
- No maintenance
- 5 year warranty
- "We guarantee it will work or your money back"

Costs only \$349.00

Eco-Tech

717-337-9325



OWN YOUR OWN WINDMILL AERATOR

And Clear Up Your Pond!
• Live Fish & Supplies • Aerators & Fountains

Electric Aerator Water Pump

Order Fish NOW!

Keystone Aquaculture, Inc.
(Formerly Sparoch Fish Hatchery)
309 Prospect Avenue,
Duncannon, PA 17020
1-717-834-6772 • 1-800-994-7277
www.fishhatchery.com

MAILBOX MARKET AD FORM

Only ads submitted on this official form will be published in our mailbox markets. No photo copies accepted!

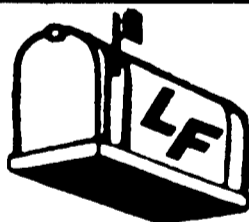
Please NO PHONE CALLS • Please PRINT LEGIBLY

Attach Your Lancaster Farming Mailing Label Here

Check One: For Sale Notice Wanted
If You Do Not Wish To Be On The Internet Please Check Here

1	2	3	4
5	6	7	8
9	10	11	12
13	14	15	16
17	18	County	Phone No

No Phone Calls Please!



FREE TO SUBSCRIBERS ONLY

PLEASE READ ALL REQUIREMENTS BEFORE FILLING OUT FORM!

- Requirements:
- 1) Subscribers allowed "one" free Mailbox Market per month only. (Ad will appear 1 week only).
 - 2) Lancaster Farming Mailing Label must be attached.
 - 3) Limit: 20 words.
 - 4) Phone number must include area code
 - 5) Your County must be included
 - 6) Markets must be received in office by Monday or will be held until following week's issue.
 - 7) No Business Ads accepted.

** The Lancaster Farming staff has the right to reject any Mailbox Markets that do not meet these requirements **

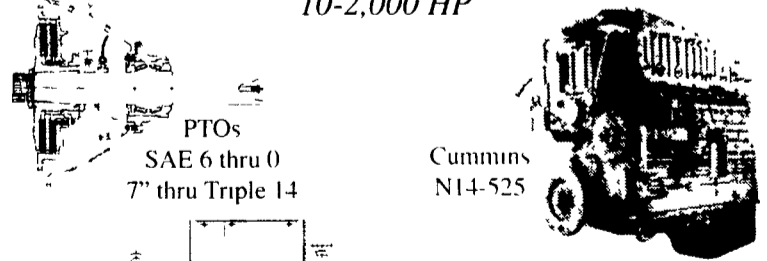
Mail To:
Lancaster Farming
Mailbox Markets
1 E. Main St.
P.O. Box 609
Ephrata, PA 17522

DIESEL POWER SYSTEMS

415 Peters Dr. • Gordonville (Lancaster Co.), PA 17529

Cummins - Isuzu - VW

Industrial Power Units & Engines
10-2,000 HP



SPECIAL SALE PURCHASE
(Limited Quantity)

1006T Perkins Power Unit
180 hp w/clutch \$7,895
8 Hp Lombardini Air Cooled \$875

Single- & Two-Bearing Generators (8) KW @ 3600 (2) Bearing Generators \$378/ea.

New - Used - Rebuilt

Qualified Reseller Discounts!
Call for Complete Product Line Listing
717-354-4801 • Toll Free 877-354-4808
Fax 717-354-4404