

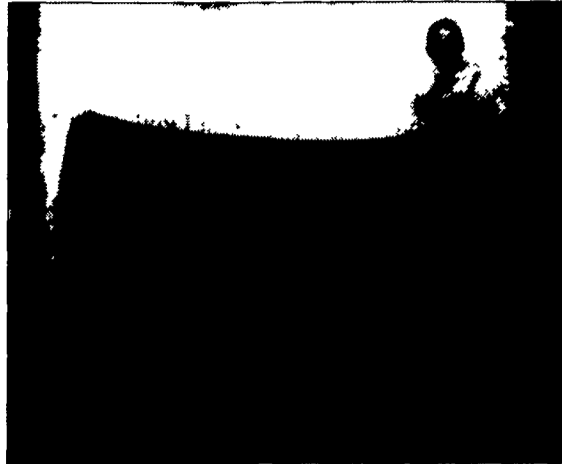
Pennsylvania Beef Expo Heifer Show Results

STATE COLLEGE (Centre Co.) — This year entries in the Pennsylvania Beef Expo were at an all-time high, as the show attracted approximately 320 entrants. Following are the results from the heifer show. Watch next week's issue of *Lancaster Farming* for results of the steer classes.

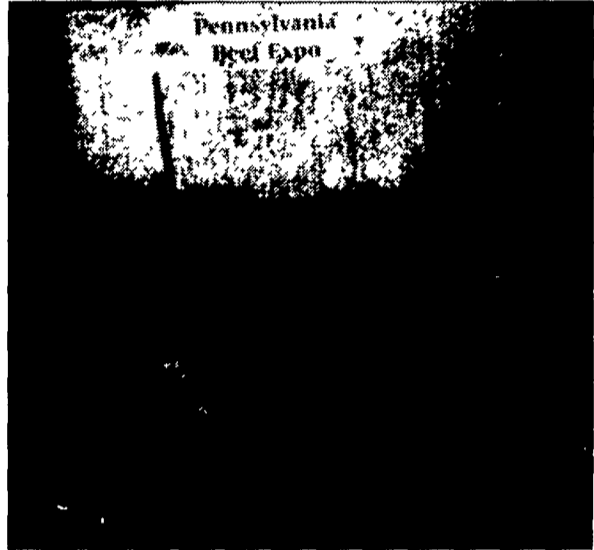
ANGUS HEIFER SHOW

- Early summer heifer calves: 1. Katrina Frey. 2. Forrest Ohler.
- May heifer calves: 1. Julie Campbell. 2. Jamie Hower. 3. Jacob Logan.
- April heifer calves: 1. Mark Butler Jr. 2. Julie Campbell. 3. Mark Butler Jr.
- March heifer calves: 1. Heather Hoffman. 2. Cortney Hill-Dukehart. 3. Kelly Hain.
- February heifer calves: 1. Jamie Hower. 2. Cortney Hill-Dukehart. 3. Eliza Walton.
- January heifer calves: 1. Ryan Frank. 2. Herman Hake. 3. Katrina Frey.

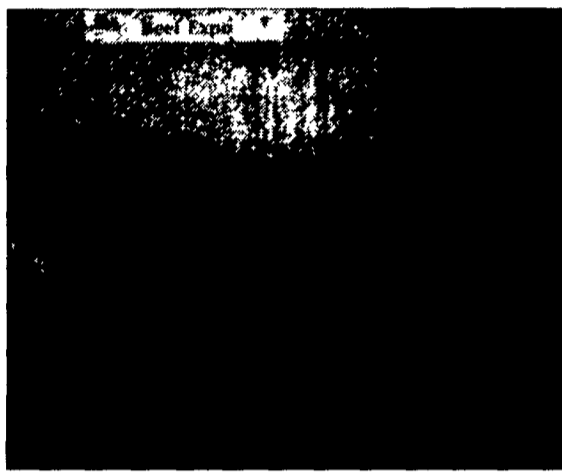
(Turn to Page A42)



Julie Campbell, Pennsylvania Furnace, showed the reserve champion Angus heifer.



Jeremy Barbour, Stoneboro, showed the reserve champion Maine-Anjou heifer.



Sara Jo Campbell, Sycamore, exhibited the champion Maine-Anjou heifer.

Highlights Of Pa. Bull Performance Test

UNIVERSITY PARK (Centre Co.) — Sixty-eight beef bulls went on the auction block on March 29, the concluding highlight of the 2002 Bull Performance Test conducted by the Pennsylvania Department of Agriculture at its Livestock Evaluation Center located at University Park.

This year's beef bull test and sale included Angus, Charolais, Limousin, Polled Hereford, and Simmental.

"The bull test and sale exemplifies the best of Pennsylvania's beef industry," Sam Hayes, agricultural secretary, said. "Some of the best-tested genetics were sold which afforded the opportunity for interested breeders to buy quality bulls."

Programs like the bull performance test are used to verify the genetic potential animals on test by evaluating bulls in a controlled environment. By proving the genetic potential of tested bulls, animals offered for sale can assist buyers in producing higher quality replacement and feeder animals.

The high-selling bull was an Angus sold by Marlin and Steve Paul to Tom Mullinix for the USDA in Union Bridge, Md. Sale price was \$3,200. This was the top-indexing bull in the overall

breeds.

The second high bull was a Red Angus sold by Nancy Myers of Dallastown to Tom Boop and Charles Gaffney of Roscoe, N.Y. Sale price was \$3,150.

The high-selling Hereford was sold for \$2,000.

The high-selling Angus was sold for \$3,200.

The high-selling Simmental was sold for \$3,100.

The high-selling Charolais was sold for \$2,000.

The high-selling Limousin was sold for \$1,500.

The average for Herefords sold (two) was \$1,575 per bull.

The average for Angus sold (48) was \$1,941 per bull.

The average for Simmental sold (15) was \$1,643 per bull.

The average for Charolais sold (one) was \$2,000.

The average for Limousin sold (one) was \$1,500.

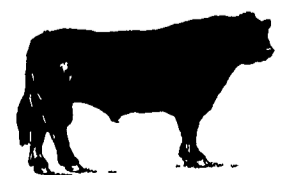
Sixty-seven bulls were sold at a total of \$124,475, or an average of \$1,858 per bull.

"It is not possible," Hayes said, "to conduct a performance test without the involvement of many persons including the cattle breeders of Pennsylvania; the PDA staff at the Livestock Evaluation Center and the Bureau of Animal Health and Diagnostic Services; the livestock

technical committee, auctioneer and ringmen; and the staff professionals at The Pennsylvania State University. Also, I want to recognize the members of the Pennsylvania Cattlemen's Association, the Pennsylvania Livestock Association, and the Pennsylvania Beef Council. And I appreciate the buyers who attended the sale. This was a team effort."

On a related note, Hayes said that the Pa. Department of Agriculture will enter the construction phase of its new Livestock Evaluation Center in the very near future. "It is my hope," he said, "to have a new Livestock Evaluation Center that will serve as a model for the nation. It is important for livestock producers and consumers. This was one of my goals when I became secretary of agriculture."

"In addition to performance testing, the new Pennsylvania Department of Agriculture facility will also be available for instruction, research, and it will be a professional conference center for livestock producers," Hayes concluded.



PARTICLE FUME PROTECTION FOR WELDERS

Seedglas
Fresh-air®
IIP 9000

The world's most advanced powered air-purifying respirator with the latest in auto-darkening welding technology

- The battery is part of unit, reducing size and weight
- New helmet easy access to lens cassette and extended throat protection
- Improved airflow pattern means it doesn't feel like you're being blasted by a fan

D.S. Machine Shop

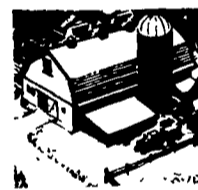
238B Old Leacock Rd., Gordonville, PA 17529
717-768-3853

Weaver Insurance Agency

"We're Here To Serve"

FARMS -

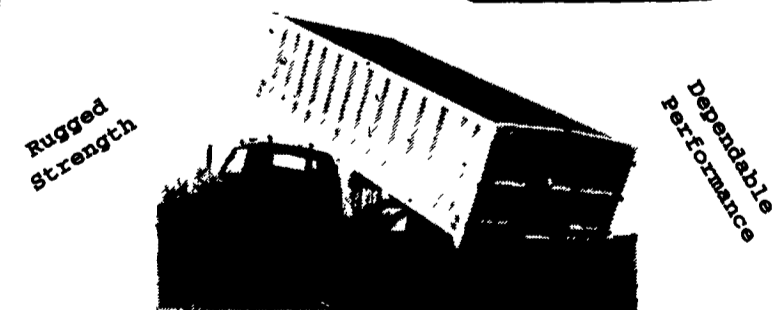
We can insure all farms from mushrooms to fish, and from dairy to nursery stock. No farm is too complex or too small for us to help you with.



Please Call For Quotations or Information.
We Offer All Types of Farm and Agribusiness Insurance

Roger Slusher • Bob Lee
• Cindy Beyer • Julie Lee • Terry Wingert
248B Maple Ave., Quarryville, PA 17566
(717) 786-1711 (800) 882-1415

ALUMINUM GRAIN BODIES & ALUMINUM REPAIRS by



These ultra-light bodies are designed for strength through engineering, not strength with bulk. For example, a 16' grain body with tailgate and 48" sides weighs only 1490 lbs. complete. We'll build you any length or any side height up to 60".

Also available:

- Double swinging hay hauling tailgate
- Barn door type tailgate
- Slide out cattle chutes
- Diamond flooring
- Pull out panel tailgates
- Any size grain chute

HEWEY WELDING

1045 Wampler Rd. Lebanon, PA 17042 (717)867-5222

CORN SUPPLY GETTING LOW?

TRY ROASTED CORN AND DISCOVER THE DIFFERENCE!



- ~ Higher Digestibility - 10% more available energy.
- ~ Purer Feed - Removes molds and reduces toxins.
- ~ Drier Total Ration - Better Rumen Health.
- ~ Greater Profits - Advance two to eight lb. per cow in milk with improved fat and protein.
- ~ Ask us about the availability of roasted corn.

SCHNUPP'S GRAIN ROASTING, INC.

416 Union Rd., Lebanon, PA 17046
(717) 865-6611 800-452-4004

David N. Groff
RD 3, Lewisburg, PA 17837 (570) 568-1420