

1993 Utility Reefer 48'x13'6" White Aluminum Sides, Stainless Front and Rear, HD Floor, Scuff, Spring Slider, LP24.5 tires, Alum. Outside, Carrier Phoenix Unit, Good Condition **\$7,500 OBO**

1996 Great Dane All Stainless Steel Reefer, 48'x96"x13'6", Air Ride, Sliding Tandem, HD Floor, HD 18" Scuff, Kemlite, Carrier Ultra Unit, LP 24.5 Tires, Alum. Outside Rims, 10 Hole Hub Pilot, Very Good Condition Inside and Outside, Will Separate Unit

1997 Utility all Stainless Steel Reefer 48'x96x13'6", Air Ride, Sliding Tandem, HD Floor, HD 18" Scuff, Kemlite, Rear Vent, Carrier Ultra Unit, LP 24.5 Tires, Alum. Outside Rims, 10 Hole Hub Pilot, Very Good Condition Inside and Outside Will Separate Unit

Sliding Tandem by Binkley, 4 Spring, Budds off 1997 Trailmobile Reefer 102" Auto Slack Adj. Very Good..... **\$500 OBO**

Clark HWP 40 Electric Pallet Jack, 4000# Good 12 Volt Battery and 120V Charger, Good Condition..... **\$750 OBO**

Moto Truc Reach Lift Electric MO# X-TEND-R Stand On Type 3000 #..... **\$750**

Steering Tire (New) Radial on a Dayton Wheel Size 1000R20 16 Ply..... **\$100**

(3) 900x20 Drive Tires Good Tread **\$20 Ea.**

(20) Steel Disk Wheels 24.5 Hub Pilot and Stud Pilot Some Reconditioned..... **\$25 Ea. OBO**

Pullrite Trailer Equalizing Hitch Almost New..... **\$500 OBO**

(3) Trailer Loading Ramps All Fiberglass 13' Long 2' Wide 1500# Capacity Each, Anti Skid Surface..... **\$100 Ea.**

Lincoln Arc Welder AC 225 Amp..... **\$100**

Please Call Steve @ 800/752-1902, 717/362-8117 Mon.-Fri. 8 AM - 5 PM or 717/362-3678 nights and weekends

MOVE 'EM OUT



1998 INTERNATIONAL 4700
DT466 210HP, 6+1 Trans, 25500 GVW, Air Ride Suspension, A/R Seat, 18"x97" H Morgan Van, Chrome Bumper, Sun Visor, Nice Truck



1999 INTERNATIONAL 4700
DT466E-190 HP; Automatic, 23,440 GVW, 19 5" Tires, A/C; 20' Maroon Van w/Liftgate, **READY TO WORK**



"NEW" Knapheide "1" BACKPACK TOOL BOX



1999 ISUZU NPR
142 HP Diesel; 5 Spd; 10' Gichner Refrig. Body w/Thermo King CBII Unit, 12,000 GVW, **ONLY 83,300 MILES**

All Steel - Paint Driftwood Satin Glo Silver. Take It Away - Or We Can Mount On Your Chassis

WE DELIVER ANYWHERE!!!



FIVE STAR ISUZU ★★ ★★

New Toll Free - 1-877-54ISUZU Keith Eshelman (544-7898)

INJECTORS

Have you serviced yours?

Bad Injectors Cause:

- Excessive Fuel Consumption
- Poor Starting
- Loss Of Power
- Misfiring
- Black Smoke
- Overheating

So service them regularly!

As always, injectors are checked free of charge

PENN DIESEL SERVICE CO.

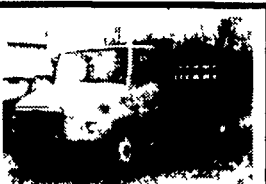
Diesel Technology Center
Factory Authorized Fuel Systems & Turbochargers Specialists
Parts & Equipment Distributors

Exit 77 Interstate 81
337 N. Fairville Ave.
Harrisburg, PA 17112
Web: www.pennsdiesel.com
E-mail: pennsdiesel@hotmail.com

800-535-2913
717-545-4207
Fax: 717-545-0115



1998 GMC C-6500
Cat Diesel, 6 Speed, A/C, 2-50 Gal Tanks, 25,950 GVW, w/22 Ft Flatbed, Tie Straps Only 48,000 Miles, Very Clean, **\$22,500**



1997 Freightliner FL-50
Cummins Turbo Diesel, Allison Auto, 20,000 GVW, 16 Ft Stake Body, Liftgate, A/C, Very Clean **\$15,900**



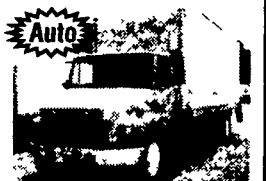
1998 GMC G35
Turbo Diesel, Auto, A/C, 14' Body, Ramp, 81,000 Mi **\$13,900**



1997 GMC W4 Turbo Diesel
Auto, 15,000 GVW, 16 foot Stake Body with Lift gate - Very clean, 94,000 mi **\$13,900**



95 IH 4900 DT466,
6 speed, A/C, Air Seat, 24 ft Van, 135K, 25,500 GVW (No CDL) **\$16,900**



97 FL-60 Freight Liner
Cummins Turbo Diesel, Allison Auto, A/C, 26,000 GVW (No CDL), 24 Ft Van, 90K, Very Clean **\$19,500**



1997 GMC G-35, V-8, Auto,
A/C, 15' Box, Ramp, Clean **\$8,900**



1995 IH 4900 DT466, 6 spd,
A/C, air seat, 25,000 GVW 168" C to A - very clean **\$16,500**



1995 GMC Top Kick, 215 hp,
Cat dsl, 6 spd, A/C, A/B, 22' Morgan Reefer body, MD II w/E standby **\$17,900**



98 FL-70 Freightliner
8.3, 210 Hp, 6 Spd, A/C, 24' Van, L/G, 75,000 Mi, 26,000 GVW



1996 GMC W-4, Turbo Dsl,
Auto, 14,000 GVW, 15' Van, Very Clean **\$12,900**



REEFER & VAN BODIES & LIFT GATES,
14 ft - 26 ft, ex cond Call For Price

MARTIN'S USED TRUCKS & EQUIPMENT INC.

560 Lampeter Rd., Lancaster, Pa. 17602
Robert Martin (717) 392-6266
(717) 299-6200

Reefers • Vans • Flatbeds • Used Parts

WE SERVICE WHAT WE SELL



7760 Allentown Blvd.
Harrisburg 717-671-9115

Trailer Repairs & Fabrication 717-795-9902

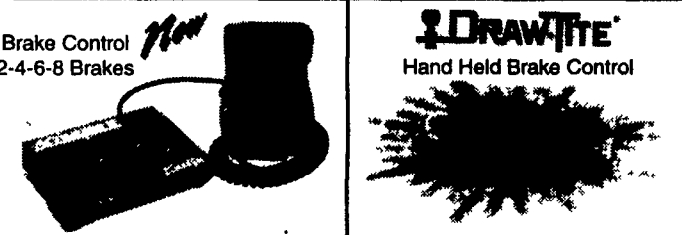
HOURS Mon., Tues., Wed. & Fri 8-5, Thurs 8-8; Sat. 8-2

Truck & Trailer Parts & Accessories
Distributor
www.allproducts.com

6250 Carlisle Pike
Mechanicsburg 717-795-9116

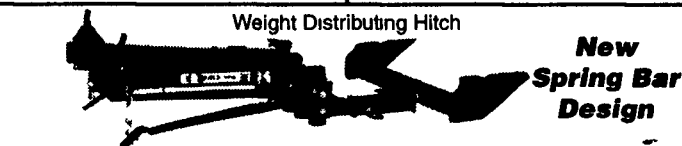
Orders 800-622-7003

Trailer Financing Available or



Brake Control
2-4-6-8 Brakes

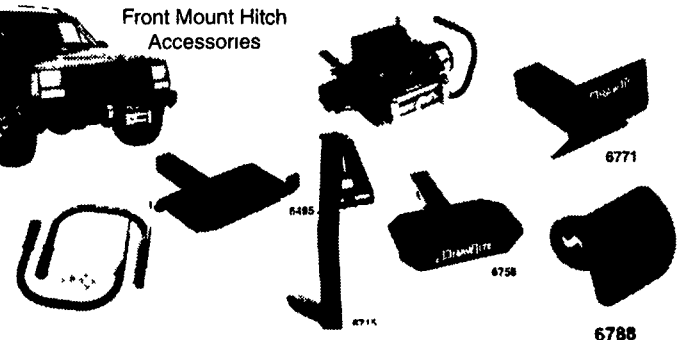
DRAW TITE
Hand Held Brake Control



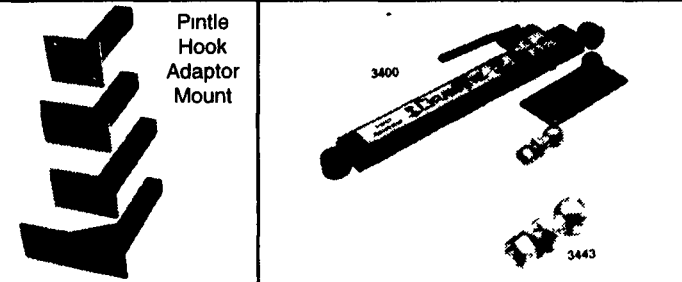
Weight Distributing Hitch

New Spring Bar Design

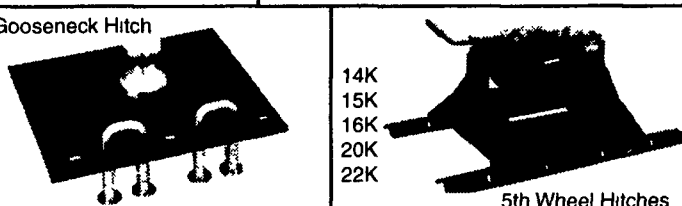
DRAW TITE PRODUCTS



Front Mount Hitch Accessories



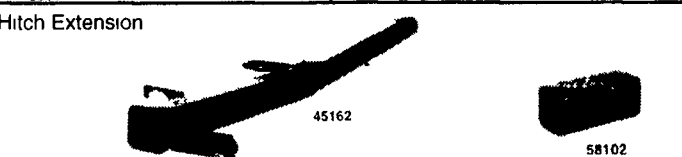
Pintle Hook Adaptor Mount



Gooseneck Hitch

14K
15K
16K
20K
22K

5th Wheel Hitches



Hitch Extension

WALLACE & BUYERS PRODUCTS



Dual Purpose Hitch
with dual locking assembly
AMERICAN MADE

