

**NEW BISON TRAILERS AT OLD PRICES
Buy Before The Price Increase!**



**1999 18' Valley, Tack Manager,
2 Horse Stalls, Open Compartment
For Buggy, 2 Side Doors, Rear Ramp
& Gate \$4,500**



**\$4,515
14' Bison Stock Trailer
7'W x 7' H, Blue**

TRADE-INS WANTED

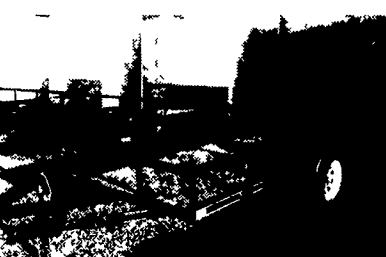
Your Old Trailer May Be Worth More Than You Think!



**Special
Price \$4,350
Big Tex 10,000 lb.
Dump Trailer**



**\$6,218
Bison 16' Lx7' Wx7' H
Gooseneck Stock Trailer**



**Big Tex Single Axle
Starting at \$550**



**\$4,295
Continental Cargo 8'x16'
Double Rear Doors, Side Door,
Stone Guard**

4x8 up to 6x12 \$1,144 - all sizes in between

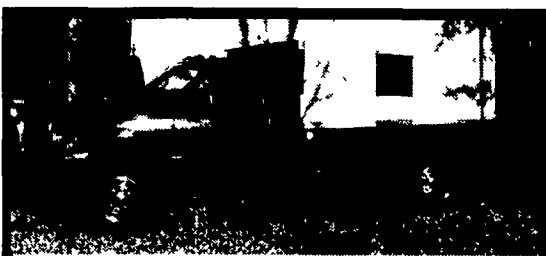
YARNALL'S EQUIPMENT CO., INC.

4171 Horseshoe Pike (Rt. 322) Honey Brook, PA 19344

1-866-228-0408 Toll Free

Open 6 Days - Til 7:00 P.M. Thursdays

FINANCING AVAILABLE - TRADE-INS ACCEPTED

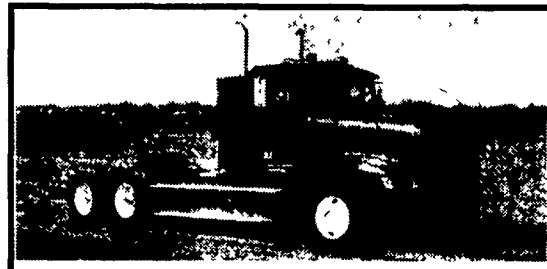


1999 Ford F450 Super Duty 2WD.

Power Stroke diesel, A/C, custom seat, 127,000 miles, only 17,000 miles on Reman engine, new transmission and clutch. Have receipts for all work done. New 12 ft. flat bed, Excellent Condition, One owner driver.

\$24,500

717-252-3908 • Wrightsville, PA



1993 Freightliner FLP120 Day Cab

127L Series 60 Detroit 365/400, 10 Spd., Eaton Trans., 3.90 Rears, Air Ride Suspension, Good Tires, 488,000 Miles, Dual Exhaust, Sliding Fifth Wheel, 206" W.B. **\$13,900**

No Sunday Calls (717) 597-5623

DIESEL TRUCKS



2 Wheel Drive
99 Dodge 2500 Quad Long Bed, SLT, Auto
99 Ford F-350 Crew, Dually, Lariat, Auto
99 Ford F-350 Quad, Dually, XLT, Auto
96 Ford F-350 Crew, Dually, XLT, Auto
93 Ford F-350 Crew, Dually, XLT, Auto
96 GMC 3500 Crew, Dually, 7.5L, Auto

4x4's
2002 Ford F-250 Crew, Lariat, Auto
2000 Dodge 2500 Quad, Long Bed, Auto
2000 Dodge 2500 Quad, Short Bed, 5 Sp.
97 Dodge 2500 Club, Long Bed, Auto
96 Dodge 2500 Club, Long Bed, 5 Sp
95 Dodge 2500 Club, Long Bed, Auto
95 Dodge 2500 Reg, Long Bed, Auto

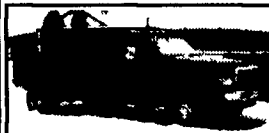
**McNamara
Cars & Trucks**

Dennis McNamara • 2 miles South of I-78 on Rt. 61

877-965-0290

www.mcnamaratrucksrus.com

USED TRUCKS FOR SALE



**1997 DODGE RAM
3500 SLT**
Quad Cab Dually, 4x4, Cummins Diesel, AT, A/C, Most Options, Green, 202K **\$16,500**



**1999 FORD F450 XLT
8 FT. FLAT BED**
Power Stroke Diesel, 6 Spd., 4x4, A/C, Dual Rear Wheels, Most Options, 53K Miles, White **\$25,500**

1997 GMC 1500 SUBURBAN 4X4, V8, AT, Most Options, Barn Doors, Leather, 95K Miles, Black **\$14,500**
1997 FORD E350 MAXI PASSENGER Van Power Stroke Diesel, AT, Dual A/C, Most Options, 93K Miles, Met. Green **\$15,500**
1997 DODGE RAM 2500 SLT LARAMIE, Cummins Turbo Diesel, 4x4, 5 Spd., A/C, Most Options, 88K Miles, Green **\$18,500**
1996 DODGE RAM 2500 SLT LARAMIE, Club Cab, Cummins Turbo Diesel, 4x4, 5 Spd., A/C, Most Options, 119K Miles, Black **\$18,500**
1995 FORD F250 XLT, 4X4, V8, AT, A/C, Most Options, Alloy Wheels, 80K Miles, Green & Silver **\$9,800**
1995 CHEV S-10 EXT. CAB, 4x4, AT, A/C, 4.3, 130K Miles, Red **\$7,200**
1994 DODGE RAM 2500 SLT LARAMIE, 4 X 4, Cummins Turbo Diesel, AT, A/C, Most options, 161K Miles, Green & Grey **\$10,500**
1994 FORD F250 XLT 4x4, Powerstroke Turbo Diesel, 5 Spd, A/C, Most Options, 130K Miles, Black **\$12,500**
1993 DODGE D250 Cummins Diesel, 4x2, AT, A/C, Most Options, 200K Miles, Green **\$4,895**
1992 DODGE D250 Cummins Diesel, 4x2, Club Cab, 8' Bed, 5 Spd., A/C, Most Options, 178K Miles, Gray & Silver **\$8,250**
1999 VW GOLF, 4 Door Diesel, 5 Spd., 94K Miles, Black **\$10,500**

**SCHAEFFERTOWN
AUTO & TRUCK SALES**

Rt. 501, 1-1/2 miles South of Schaefferstown

717-949-2812

CHEVROLET GMC

Sutliff

GM PARTS

GENUINE GM PARTS FOR ALL GM VEHICLES

800-932-0284

**Free Delivery Routes In
12 Counties In Central PA
Call For Specifics**

25 PARTS PROFESSIONALS TO SERVE YOU

ENGINES - TRANSMISSIONS

A.C. DELCO - SHEET METAL

ALL IN STOCK AND PRICED RIGHT

IF YOU NEED GM PARTS

WE'VE GOT WHAT YOU NEED

"WORKHORSE" GM Walk-In Vans

"W" Series Tilt Cab - GM Isuzu

Duramax Diesel

PRO SHOP - Nascar Memorabilia

Die Cast, Clothing, Etc.

SUTLIFF GM PARTS

13th & Paxton, Rt. 183

Harrisburg, PA

CHEVY TRUCK

OLDS

BUICK

CADILLAC

PONTIAC

**LANCHESTER
TRAILER SUPPLY**

**TRAILER PARTS
SERVICE - INSTALLATION**



Class 2, 3, 4 & 5 Hitches

• Saturday Appointments Available For Installation



Full Line Of Trailer Parts

- Brake Controlers
- Ball Mounts
- King Pins
- Wide Load Signs
- Flags
- 12 V Electric Winch
- Vacuum Brake Kit For Truck and Trailers
- Dexter Axles
- Hitches
- Hitch Balls
- Pintle Hooks
- Wide Load Mirror
- Deka Batteries
- Jacks
- Tires and Wheels
- Lights
- Wiring
- Load Lok
- 12 Volt Hyd Pumps

OVERSIZE LOAD

Signs

Authorized Distributor For

Federal Signal

Strobe and Revolving Lights,

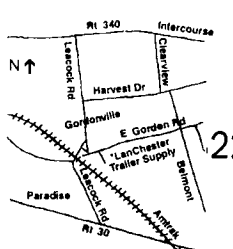
Amber and Blue

Large Selection In Stock

2"x27" Ratchet Strap **\$17.50**
4"x27" Strap **\$14.50**
4"x30" Strap
Case Lots on 10 Pcs. or More
10% OFF

INSTALL HITCHES • TRAILER REPAIRS • OTHER SERVICE

Now Open For State Inspection On Trailers



**LANCHESTER
TRAILER SUPPLY**

Formerly David A. Fisher Trailers

220 East Gordon Rd., Gordonville, PA

717-768-0663

6:15 - 5:00 M-F
7:00 - 1:00 Sat

