

SINCE 1936

M.M. WEAVER & SONS, INC.



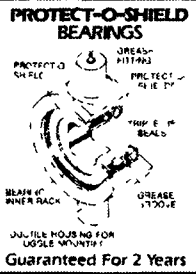
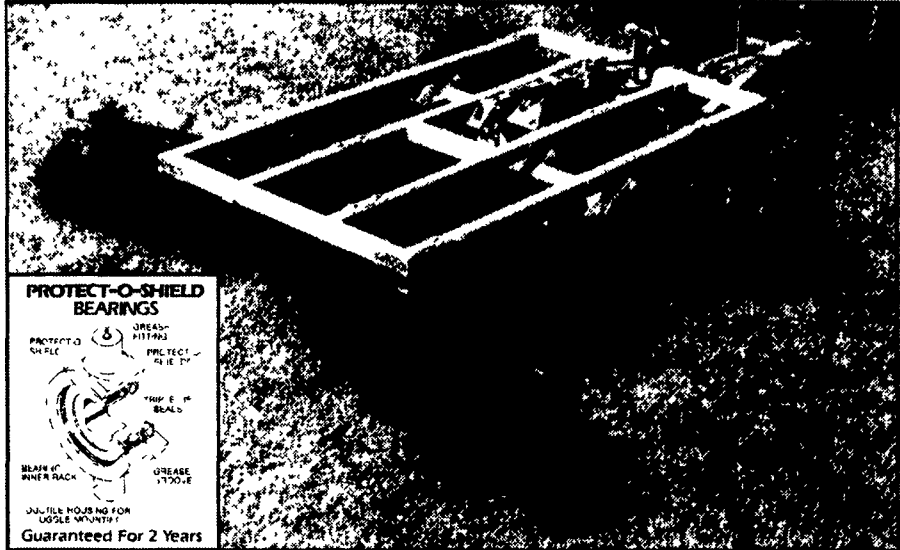
MASSEY FERGUSON
Tractors And Combines



Meeting all your harvesting needs!

Leola, PA 17540 Phone: (717) 656-2321

Located: 4 miles West of New Holland on Rt. 23, 1-1/2 miles Northeast of Leola on the No. Groffdale Rd., 1 mile on the right, opposite Groffdale Mennonite Church.



MODEL F-17B DOUBLE OFFSET TANDEM

AMCO's Model F-17B double offset tandem disk harrows range in size from 9'3" to 15'0" and are ideal for use with tractors ranging from 50 to 95 horsepower.

These dependable double offset harrows weigh from 296 to 337 pounds per cutting foot and are available in 9'3", 10'6", 12'0", 13'6", and 15'0" models.

Built AMCO tough, the Model F-17B double offsets have the same quality features you expect from AMCO implements. Depending upon size, the Model F-17B is equipped with eight or twelve regreasable ball type, toggle-mounted bearings featuring

AMCO's Protect-O-Shield®; 1-1/2" square, high-carbon, cold rolled steel axles; reversible clevis and heavy-duty scrapers with high-carbon replaceable blades. The Model F-17B has standard 22" plain blades on 9" spacing and on the rear gang features diminishing blades with 16" feathering blades. A gang bolt wrench is also standard.

The Model F-17B has AMCO's optional Shock Absorber Gang Riser which allows the gang on the harrow to move upward and back to relieve shock when the disk blades encounter an obstacle in the ground.

Specifications subject to change without notice.



Disk Harrows
Please call for models in stock

INTRODUCING THE ROLLANT® 250 WITH MAXIMUM PRESSURE SYSTEM

- Hay or straw
- Heavy duty, high capacity



MPS

- Maximum pressure is achieved with the new hinged roller system

FIXED CHAMBER ROUND BALER

- Dense 4' bales
- 83" wide pickup standard
- ROTO CUT® model available
- Double twine wrapping, standard, ROLLATEX® net wrapping optional

Financing available through **CLAAS Financial Services**



Your Harvesting Specialist

USED COMBINES

85 MF 860 4x4 2466 Hrs, Ser #19374	\$12,500
85 MF 860 4x4 Ser #19749, 5,000 Hrs	\$11,500
81 MF 860 Ser #15125, 4,300 Hrs...	\$8,000
79 MF 760 Ser #9899, 3,260 Hrs.	\$4,000
75 MF 750 Ser #5130	\$3,000
91 MF 8460 Ser #09402425, 2758 Hr.	\$45,000
90 MF 8460 Hill Side Ser #9402540, 3774 Hr	\$45,000
90 MF 8460 Hill Side Ser #9402539, 2428 Hr	\$45,000
89 MF 8460 Hill Side Ser #9401998, 4026 Hr	\$35,000
82 MF 850 Ser #23681, 4600 Hr	\$7,000
79 MF 550 Ser #1739	\$11,000

USED HARVESTERS

98 Claas 820 4x4 Corn Cracker, 340 HP, 24.5R32, 1800 Hr., RU450 Corn Head	\$115,000
99 Claas 820 4x4 Corn Cracker, 30 5R32, RU450 1000? Cutter Hrs., New 10' Hay	\$135,000
Gehl 1275 Pull Type Corn Cracker, 3 Row Corn Head, Hay head	\$20,000

Gehl 1060 Pull Type Harvester, 3 Row Corn Head, Hay Head	\$5,200
Gehl 1265 Harvester, Pull Type, 3 Row, 7' Hay New Holland 900 Harvester, 2 Row - Hay	\$16,500
790 New Holland Harvester 2 Row Corn With Corn Cracker	\$11,900
00 Claas 880 Harvester, 4x4, SN#49103553, Auto Lube, Corn Cracker, OD Trans., Hyd for Dump Wagon, 12' Hay Head, 6-Row Independent Corn Head	\$229,000
99 JD 6750 Harvester, 4x4, 365 HP, Corn Cracker, 30.5R32 Tires, Hyd. for Dump wagon, Auto Lube, 1022 Cutter Hours, 1310 Engine Hours, 10' Hay Head, 6-Row Independent Corn Head	\$155,000
95 Claas 840 Harvester, 4x4, 381 HP, 24.5R32 Tires, Corn Cracker, 1352 Cutter Hours, 2413 Engine Hours, Claas 10' Hay Head	\$144,000
96 Claas 860 Harvester, 4x4, Auto Lube, 435 HP, 30.5R32 Tires, Corn Cracker, Hyd for Dump Wagon, 1321 Cutter Hours, 1856 Engine Hours, Claas 12' Hay Head, 6-Row Independent Corn Head	\$165,000

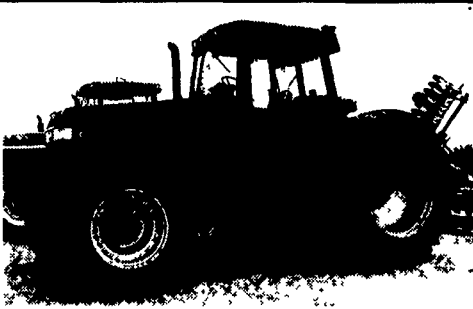
97 Claas 880 Harvester, 2WD, 503 HP, Auto Lube, 24.5R32 Tires, 1358 Engine Hours, 1024 Cutter Hours, Claas 10' Hay Head	\$139,000
JD 6710 Harvester 4x4 Corn Cracker, 6 Row - 10 Hay, 1600 Cutter HR	\$94,000

USED TRACTORS

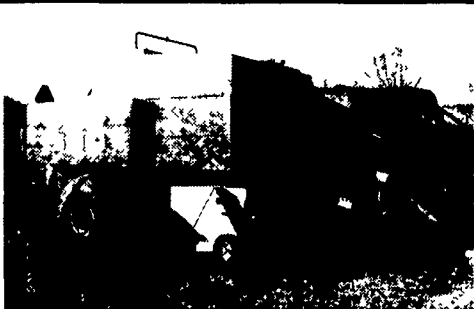
98 MF 263 2WD, 53 HP, 300 Hrs	\$15,900
(2) JCB 185-65 4x4 Tractor, 180 HP, 40 MPH	\$60,000
Case IH 7140 4x4 Tractor Duals, 197 HP	\$38,000
89 MF 1020 4x4 Hyd., Power Steering, Turf Tires, 1933 Hr	\$6,900
MF 1010 gear drive, 4'mower	\$4,300
MF 8160 4x4 Cab, 180 HP	\$69,000
2 - MF 3650 4x4, Cab, 130 HP	\$29,000
MF 4253 2WD, Platform, Low Hrs, 85HP	\$25,000
2 - MF 1155 2WD, Cab, 140 HP	\$8,000
JD 8400 4x4 Tractor, 225 HP, 18 4R46 with Duals, 4 Remote Hyd Outlet, Front Weights and Rear Wheel Weights, 1550 Hr	\$79,000
MF 4255 4x4 with Loader, 85 HP, 175 Hrs	\$33,800

RENTAL AND DEMO MODEL TRACTORS

MF 8160 4x4, 180 HP, Duals	\$72,000
MF 390T - 2WD, 18 Speed Trans, 80 HP	\$27,000
MANURE & FEEDING EQUIPMENT	
New Idea 3639 Spreader	\$5,400
HAY EQUIPMENT	
Claas 6 Star Tedder, 24' "Used 6 Months"	\$5,800
99 Claas 4x5 Round Baler Wide Pickup, Net-Twine	Just In
Claas 2200 Large Sq Baler, 27"x48"	DEMO \$57,000
Gehl 2240 Center Pivot 12' Haybine	\$3,200
E-Z Trail Bale Basket	NEW
Gehl Disc Mower Conditioner, 10'	\$2,500
98 New Holland 590 Sq Baler, 35"x32"	\$38,000
MISC. EQUIPMENT	
Amco 19'7" Disk	Demo



Case IH 7140 MFWD, Duals, 197 HP
\$38,000



98 New Holland 590, Sq 35"x35"
\$38,000



2) JCB 185-65 Fastracs, 180 HP
\$55,000



JD 8400 4x4, 225 HP, 18.4R46 With Duals, 4 Remotes
\$79,000